



APPENDIX IV-C

Glades County Critical Facilities Vulnerability Analysis

CHAPTER IV

REGIONAL VULNERABILITY AND POPULATION ANALYSIS



This page intentionally left blank.

TABLE OF CONTENTS

A.	Introduction.....	IVC-5
B.	County Profile	IVC-5
C.	Critical Facilities Vulnerability Analysis	IVC-10

List of Tables

IVC-1	Glades County Health Care Vulnerability Assessment.....	IVC-11
IVC-2	Other Critical Facilities Vulnerability Assessment	IVC-11

List of Figures/ Maps

IVC-1	Traffic Evacuation Zones.....	IVC-15
IVC-2a	Hurricane Evacuation Zones with Traffic Evacuation Zones	IVC-16
IVC-2b	Hurricane Evacuation Zones	IVC-17
IVC-3	Flood Plain.....	IVC-18
IVC-4	Wildland-Urban Interface Fire Risk.....	IVC-19
IVC-5	Mobile Home / RV Parks	IVC-20
IVC-6	Health Care Facilities (16' elevation)	IVC-21
IVC-7	Schools and Universities (16' elevation).....	IVC-22
IVC-8	EOCs, Logistical and Military Resources, PODs	IVC-23
IVC-9	Communications Resources.....	IVC-24
IVC-10	Critical Infrastructure (Water, Waste Water, Landfills, etc) (16' elevation)	IVC-25
IVC-11	Public Shelters 2010	IVC-26
IVC-12	County Evacuation Routes Vulnerable to Freshwater Flooding	IVC-27

This page intentionally left blank.

A. Introduction

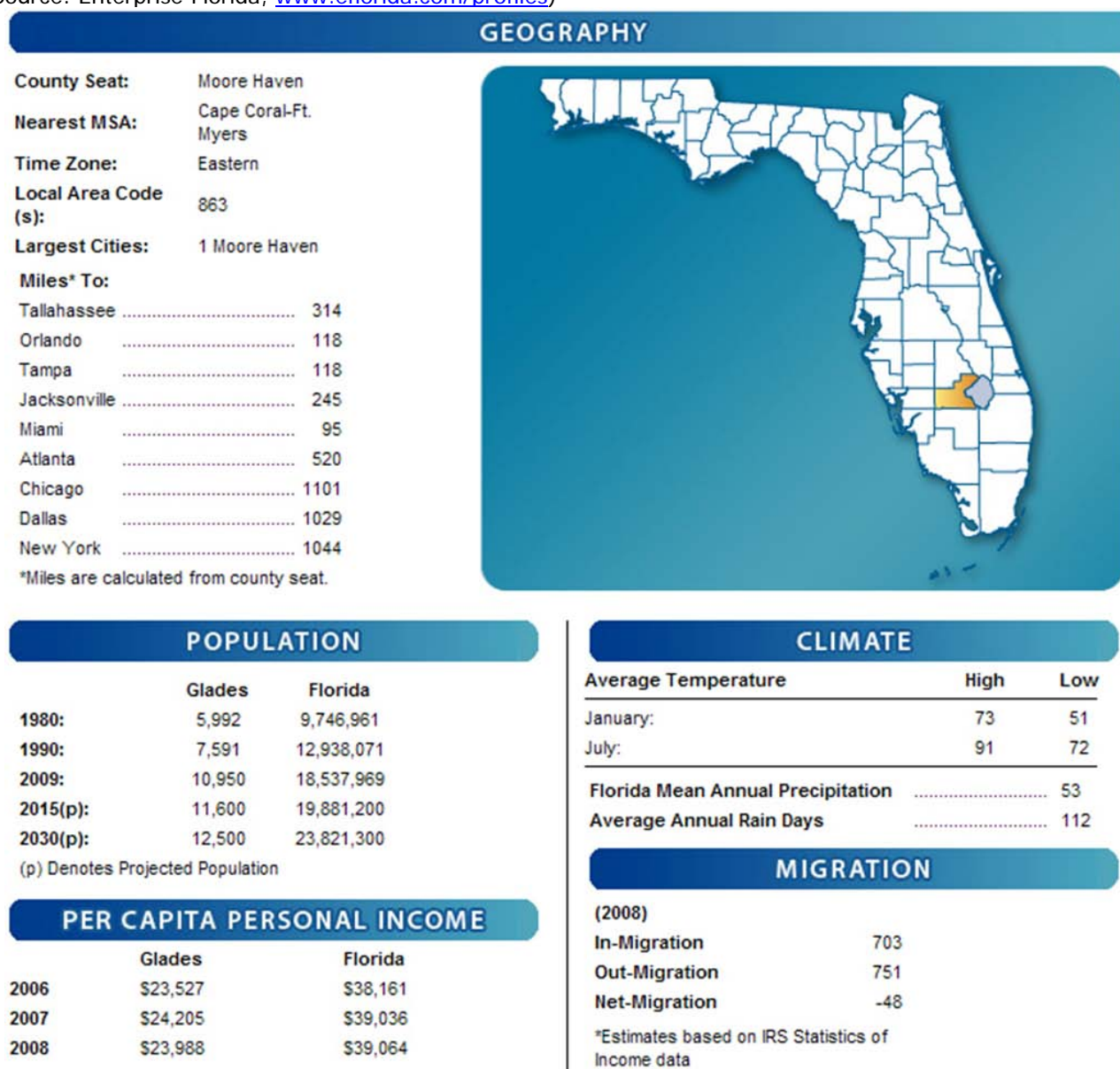
This appendix provides a County Economic Profile, Vulnerability Profile and a more detailed vulnerability analysis of critical facilities and corresponding maps.

B. County Profile

This section of the report, and the data contained herein, is provided to capture a profile of the county including geographic and economic characteristics not previously discussed in Chapter I. In addition, many of the critical infrastructure partners including private sector and public utilities are identified.

COUNTY PROFILE

(Source: Enterprise Florida, www.eflorida.com/profiles)



LABOR FORCE

(2009)

Labor Force	4,493
Labor Force % of County Population	41.0
Number in County Unemployed	460
Unemployment Rate	10.2%

Monthly labor force data are available from the [Florida Agency for Workforce Innovation](#).

EMPLOYMENT BY INDUSTRY

<i>N/D = No Data</i>	Glades	Florida
(2008)		
Average Annual Employment	1,327	7,945,162
Natural Resources & Mining	13.5%	1.2%
Construction	13.3%	6.5%
Trade, Transportation and Utilities	9.3%	20.5%
Manufacturing	3.2%	4.7%
Other Services	2.1%	3.2%
Public administration	21.2%	5.9%
Unclassified	N/D	
Leisure & Hospitality	5.7%	11.9%
Education & Health Services	3.8%	19.4%
Professional & Business Services	4.1%	14.4%
Financial Activities	0.5%	6.6%

Average Annual Wage

(2008)	
All Industries	\$34,399
Construction	\$39,766
Education & Health Services	\$18,909
Financial Activities	\$14,463
Leisure & Hospitality	\$16,642
Manufacturing	\$48,455
Natural Resources & Mining	\$31,991
Other Services	\$23,757
Professional & Business Services	\$30,547
Public administration	\$36,033
Trade, Transportation and Utilities	\$25,239
Unclassified	N/D

EXISTING EMPLOYMENT**Major Private Sector Employers**

Moore Haven Correctional Facility

Business Line: Corrections

Number of Employees..... 219

Lykes Bros

Business Line: Agriculture

Number of Employees..... 100

Brighton Seminole Bingo

Business Line: Gaming

Number of Employees..... 80

Glades Electric Co-op

Business Line: Electricity

Number of Employees..... 65

A. Duda

Business Line: Agriculture

Number of Employees..... 25

Thomas Grinding

Business Line: Manufacturing

Number of Employees..... 21

Oldcastle

Business Line: Mulch

Number of Employees..... 19

Wedgworth

Business Line: Fertilizer

Number of Employees..... 15

Vulcan Florida Rock

Business Line: Mining

Number of Employees..... 15

TRANSPORTATION

Federal Interstates		Nearest Airport with Scheduled Commercial Airline Service:	Southwest Florida International Airport
Federal Highways	US-27	# Runways	1
		Longest Paved Runway(ft.)	12000
State Highways	SR-29, SR-74, SR-78, SR-84	General Aviation Airports	Airglades Airport
Railroads	So Central FL Express	Local Deep Water Port	Port of Ft. Pierce
		Miles to Closest Port	64

STATE AND LOCAL TAXATION

COUNTY	
Countywide Ad Valorem Millage Rates:	
Government	9.1367
Schools	7.7420
Special	0.5346
Total	17.4133

Ad Valorem Tax Exemption:	Yes
Retail Sales Tax (Local Option)	1.00
Federal Enterprise Zone	No
State Enterprise Zone	EZ-2201

STATE	
Corporate Income Tax	5.5%
Personal Income Tax	0.0%
Retail Sales Tax	6.0%

COMMERCIAL/INDUSTRIAL SERVICES

Electric Companies:

- Glades Electric Cooperative
- Florida Power and Light

Natural Gas Companies:

- none

Telephone Companies:

- Embarq

Water & Sewer Companies:

- Lakeport Water Association
- City of Moore Haven
- Buckhead Ridge

Existing Industrial Zoned Land	Yes
Number of Acres	1,149
Largest Available Contiguous Parcel	194
Industrial Parks	Yes
Number of Acres	30
Largest Available Contiguous Parcel	5
Foreign Trade Zones	No
Zone Number(s)	

EDUCATION

	Public Schools	Teachers	Enrollments
Elementary:	21	46	789
Secondary:	26	30	576
Totals:	47	76	1,365

Private Schools Available: Yes

POST SECONDARY EDUCATION SERVING THE COUNTY:

Colleges/Universities:

- Florida Gulf Coast University

Junior/Community Colleges:

- Edison Community College (Satellite Office)

Vocational/Technical Schools:

- Education Center of SW Florida

Other Schools:

- First Indian Baptist Academy

MEDIA**Local Radio Stations:**

- WAFC 99.5 FM
- WOKC 1570 AM

Local Television Stations:

- WINK TV
- FOX 4

Locally Printed Newspapers:

- Glades Democrat
- Hendy Glades Sunday News

FINANCIAL INSTITUTIONS

Number of Banks: 3

Number of Savings and Loans: 0

Number of Credit Unions: 0

QUALITY OF LIFE

Cost of Living

Price Level Index, (2007)

Florida State Average = 100

	Sample
Total	93.02
Food	99.57
Housing	83.72
Medical Care	99.46
Personal Goods and Services	102.02
Transportation	99.99

Medical Services:

- Clewiston
- Florida Heartland Medical Center
- Hendry Regional Medical Center
- Rawlerson Hospital

Recreational Opportunities:

- ATV
- Bicycling
- Bird Watching
- Boating/Canoeing
- Fishing
- Hunting
- Water Sports

Historical Points Of Interest:

- Brighton Seminole Reservation
- Court House
- Cypress Knee Museum
- Fisheating Creek
- Gatorama
- Lone Cypress Tree
- Ortona Indian Mounds Park

Cultural Events/Festivals:

- Big O Birding Festival
- Brighton Reservation Festival & Rodeo
- Catfish Festival
- Chalo Nitka Festival
- Honey Festival
- Ortona Cane Grinding Festival
- Sour Orange Festival

Enterprise Florida, Inc. 800 North Magnolia Avenue, Suite 1100 Orlando, Florida 32803 Phone 407-956-5600 Fax(407)956-5599
Visit us on the World Wide Web: <http://www.eflora.com>

C. Critical Facility Vulnerability Analysis

Considerable staff resources were expended to update the critical facilities inventory. Specific attention was paid to health care facilities such as hospitals and nursing homes; emergency response agencies, hazardous materials, mobile home parks, schools and colleges and community centers. Where possible, communications resources and community infrastructure /utilities such as water and waste-water facilities were located by latitude and longitude and overlaid on the storm tide limits map. Each facility has the facility type, name, location, elevation, flood plain, fire and results of the 2010 surge analysis based on the most accurate topographic data and the SLOSH model.

The Critical Facility Inventory (Data base) includes a comprehensive list of critical facilities identified by the State and County Emergency Management Agencies. This inventory is not published as part of the report. However, selected facilities which may require evacuation or mitigation are identified in the tables and maps which follow. The tables indicate vulnerability from storm surge (based on the SLOSH model), freshwater flooding (based on the FEMA Flood Maps) and wildfire (Wildfire Interface/Levels of Concern).

The illustration below identifies the potential storm surge heights on county landmarks. This illustration is provided for public information purposes only.

The maps following tables IVC-1 and IVC-2 are illustrated at an elevation of 20', which is used to indicate a worst case scenario.

Table IVC-1: Glades County Health Care Vulnerability Assessment

FACILITY TYPE	NAME	ADDRESS	CITY	ZIP	SURGE 16FT	SURGE 20FT	FLOOD PLAIN	DEM Elevation	FIRE
CLINICAL LABORATORY	GLADES COUNTY HEALTH DEPARTMENT	956 HWY 27 SW	MOORE HAVEN	33471	OUT	OUT	OUT	16.90	N

Table IVC-2: Other Critical Facilities Vulnerability Assessment

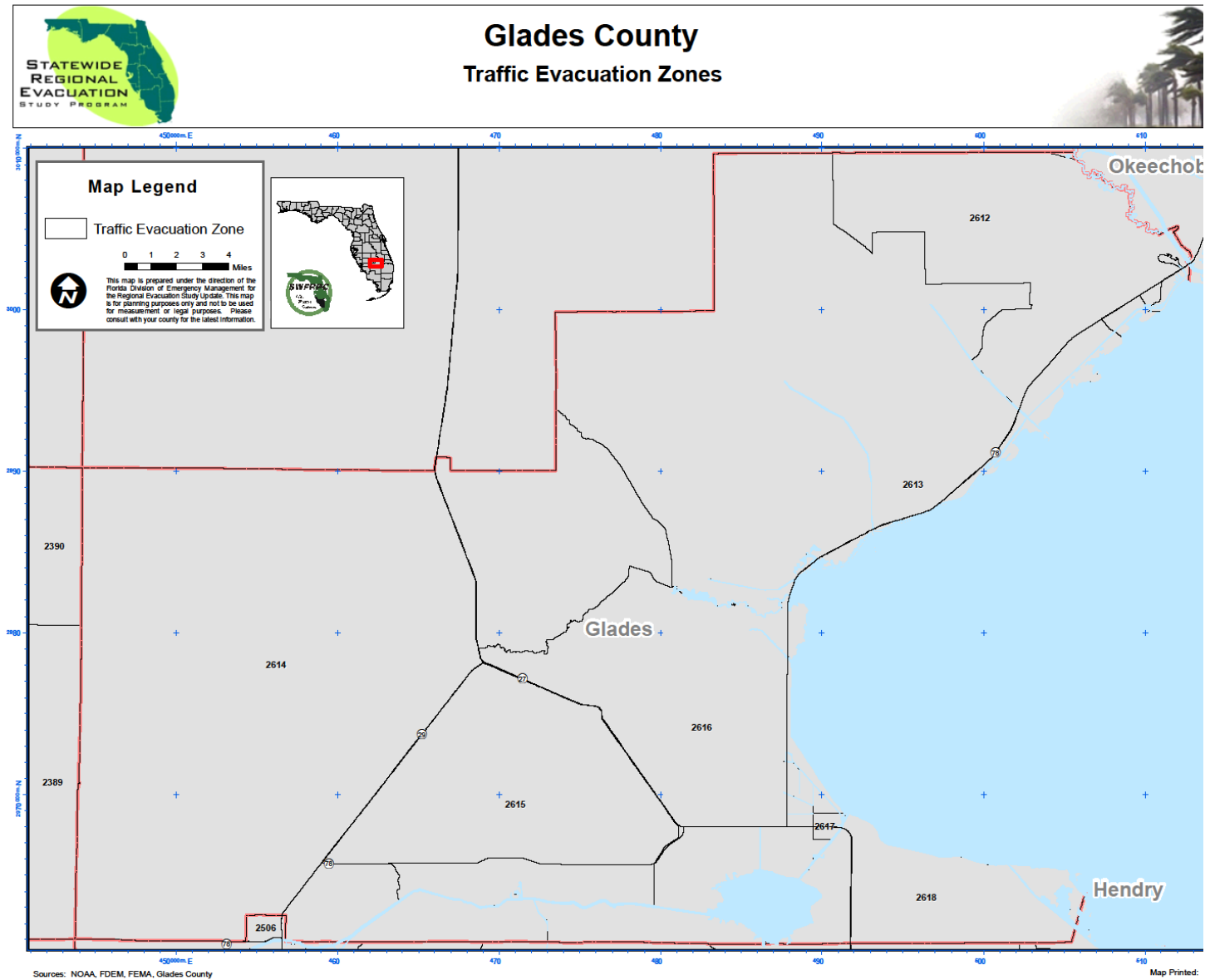
FACILITY	NAME	ADDRESS	CITY	ZIP	SURGE	Elevation	FLOOD PLAIN	FIRE
AIRPORT	GRAHAM LANDING STRIP - MOORE HAVEN		MOORE HAVEN		NA	16.2074	100	N
AIRPORT	HILLIARD'S PRIVATE		MOORE HAVEN		1	13.6666	OUT	Y
AIRPORT	LYKES PALMDALE		PALMDALE		NA	NA	OUT	N
CALL CENTER	GLADES COUNTY EMERGENCY MANAGEMENT	500 AVENUE J	MOORE HAVEN	33471	NA	15.2869	OUT	N
CORRECTIONAL FACILITY	GLADES COUNTY JAIL/SHERIFF DEPT	599 AVENUE J SW	MOORE HAVEN	33471	NA	16.1845	OUT	N
CORRECTIONAL FACILITY	MOORE HAVEN CORR FACILITY	1990 E STATE HWY 78 NW	MOORE HAVEN	33471	NA	16.0426	100	N
EMERGENCY MEDICAL SERVICE	GLADES COUNTY EMS	242 H AVE	MOORE HAVEN	33471	5	15.2627	OUT	N
EMERGENCY OPERATIONS CENTER	GLADES COUNTY EMERGENCY MANAGEMENT	500 AVENUE J	MOORE HAVEN	33471	NA	15.2869	OUT	N
FAITH-BASED FACILITY	SAINT JOSEPHS CHURCH		MOORE HAVEN		NA	18.7365	OUT	Y
FAITH-BASED FACILITY	MARCO CHRISTIAN FELLOWSHIP CHURCH		PALMDALE		3	31.6564	100	N
FAITH-BASED FACILITY	ORTONA CHURCH		GOODNO		NA	NA	OUT	N
FAITH-BASED FACILITY	INDIAN CHURCH		BRIGHTON SE		NA	26.6223	100	N
FIRE STATION	GLADES CO VFD ORTONA	2300 ORTONA RD SW	MOORE HAVEN	33471	NA	NA	OUT	N
FIRE STATION	GLADES CO VFD MOORE HAVEN FD	210 PALM AVE	MOORE HAVEN	33471	3	13.106	OUT	Y
FIRE STATION	GLADES CO VFD INDIAN HILLS	8115 INDIAN MOUND RD SW	MOORE HAVEN	33471	NA	15.419	OUT	N

FIRE STATION	GLADES CO VFD	242 AVENUE H	MOORE HAVEN	33471	5	15.3255	OUT	N
FIRE STATION	GLADES CO VFD PALMDALE	5TH AVE & MAIN ST	PALMDALE	33944	NA	39.1141	OUT	Y
FIRE STATION	GLADES CO VFD OKEECHOBEE FORESTRY STATION	HWY 27 & SR 29	PALMDALE	33944	NA	41.4089	OUT	Y
FIRE STATION	MUSE VFD	765 RAINBOW BLVD	MUSE	33935	NA	NA	OUT	Y
FUEL FACILITY - ALONG EVACUATION ROUTE	9401832		Moore Haven		NA	14.7281	OUT	N
FUEL FACILITY - ALONG EVACUATION ROUTE	8942737		Buckhead Ridge		NA	17.0836	100	Y
HAZARDOUS MATERIALS FACILITY	A DUDA AND SONS - DUDA FARM FRESH FOODS - MOORE HAVEN	3635 NORTH US 27	MOORE HAVEN		NA	13.83	100	N
HAZARDOUS MATERIALS FACILITY	PENSKE TRUCK LEASING---2140	US 27 SOUTH	MOORE HAVEN	33471	NA	16.2338	OUT	Y
HAZARDOUS MATERIALS FACILITY	CITY OF MOORE HAVEN - WATER TREATMENT PLANT	4725 U S HIGHWAY 27	MOORE HAVEN		NA	11.1129	100	N
HAZARDOUS MATERIALS FACILITY	KUNTRY KUBBARD TRUCK STOP--- 21908	STATE ROAD 78---21908	MOORE HAVEN		2	17.6288	OUT	Y
HAZARDOUS MATERIALS FACILITY	EMBARQ - MOORE HAVEN CENTRAL OFFICE	113 1/2 AVENUE J	MOORE HAVEN		NA	NA	OUT	Y
HAZARDOUS MATERIALS FACILITY	CITY OF MOORE HAVEN - BOOSTER STATION	PALM AVENUE & 3 STREET	MOORE HAVEN	33471	5	22.1125	100	N
HAZARDOUS MATERIALS FACILITY	CEMEX - MOORE HAVEN R/M	1315 FOX LANE SOUTHWEST	MOORE HAVEN		NA	NA	OUT	Y
HAZARDOUS MATERIALS FACILITY	LEVEL 3 COMMUNICATIONS - MOORE HAVEN	1820 NORTH US HIGHWAY 27 NORTHWEST	MOORE HAVEN		NA	14.252	OUT	Y
HAZARDOUS MATERIALS FACILITY	LEVEL 3 COMMUNICATIONS - MOORE HAVEN	10000 STATE ROAD 80 WEST	MOORE HAVEN		NA	NA	OUT	Y
HAZARDOUS MATERIALS FACILITY	GLADES ELECTRIC COOPERATIVE- --29135	COUNTY ROAD 833	MOORE HAVEN		NA	NA	OUT	Y
HAZARDOUS	GLADES ELECTRIC COOPERATIVE-	1190 US 27 EAST	MOORE HAVEN		NA	14.6523	OUT	Y

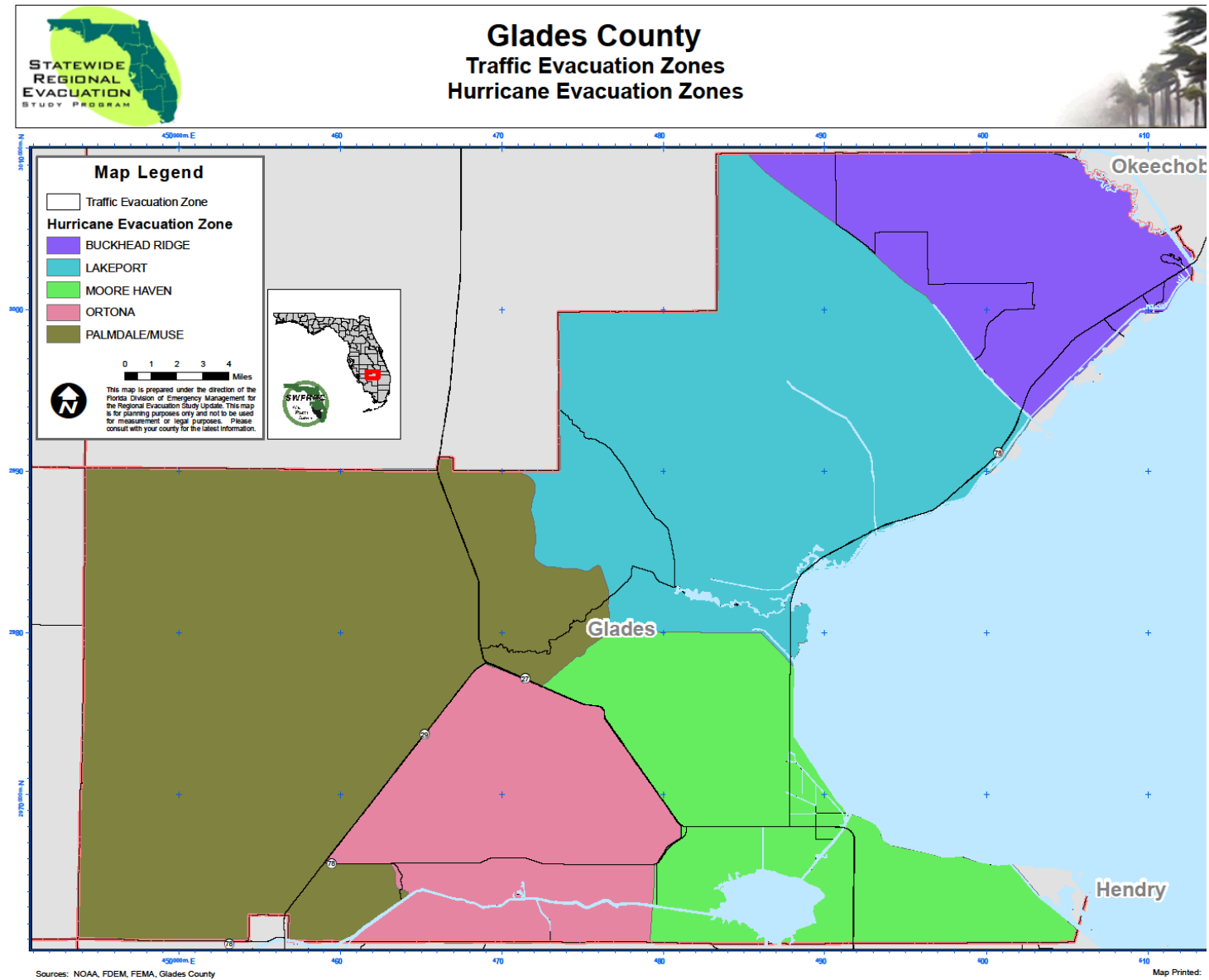
MATERIALS FACILITY	--29136							
HAZARDOUS MATERIALS FACILITY	STANDARD SAND AND SILICA - ORTONA DRY PLANT	12535 WEST STATE ROAD 78	MOORE HAVEN		NA	NA	OUT	N
HAZARDOUS MATERIALS FACILITY	BETTER ROADS - MOORE HAVEN	1740 US 27 SOUTH	MOORE HAVEN	33471	NA	14.6523	OUT	Y
HAZARDOUS MATERIALS FACILITY	OLDCASTLE LAWN AND GARDEN - MOORE HAVEN	4560 SOUTH HIGHWAY 27	MOORE HAVEN		NA	NA	100	N
HAZARDOUS MATERIALS FACILITY	WEDGWORTHS - MOORE HAVEN	2600 SOUTH US 27	MOORE HAVEN		NA	NA	100	N
HAZARDOUS MATERIALS FACILITY	RINKER MATERIALS - PALMDALE SAND MINE	5200 U S HIGHWAY 27 NORTHEAST	PALMDALE		NA	11.1129	100	N
HAZARDOUS MATERIALS FACILITY	SOUTH FLORIDA WATER MANAGEMENT DISTRICT - PUMP STATION S-131		LAKEPORT	33471	NA	NA	100	N
LAW ENFORCEMENT	GLADES COUNTY SHERIFF'S DEPT. HEADQUARTERS	599 J AVE SW	MOORE HAVEN	33471	5	14.5993	OUT	N
LIBRARY	County of Charlotte	201 RIVERSIDE DR	MOORE HAVEN	33471	NA	16.1651	OUT	Y
LIBRARY	Branch Endeavors Inc	657 S US HIGHWAY 27	MOORE HAVEN	33471	NA	NA	OUT	N
LIBRARY	Library of Women and Tech Inc		MOORE HAVEN	33471	1	10.8105	100	N
LIBRARY	Betty Branch	557 S US HIGHWAY 27	MOORE HAVEN	33471	NA	NA	OUT	N
MAJOR INTERSECTION	STATE 78 AND US 27/STATE 25		MOORE HAVEN		NA	13.6176	100	Y
MAJOR INTERSECTION	U-27/S 25 & MOORE HAVEN BRIDGE		MOORE HAVEN		NA	14.2015	100	Y
POINT OF DISTRIBUTION	Doyle Conner Ag Extension Buil	900 US Hwy 27	Moore Haven	33471	3	25.6632	100	N
POINT OF DISTRIBUTION	Lakeport Community Center	Red Barn Road	Lakeport	33471	1	14.7631	100	N
PUBLIC SCHOOL	MOORE HAVEN JUNIOR/SENIOR HIGH SCHOOL	700 TERRIER PRIDE DR	MOORE HAVEN	33471	NA	14.1347	OUT	N
PUBLIC SCHOOL	MOORE HAVEN ADULT EDUCATION CENTER	400 10TH ST SW	MOORE HAVEN	33471	5	12.0211	OUT	N
PUBLIC SCHOOL	MOORE HAVEN ELEMENTARY SCHOOL	401 TERRIER PRIDE DR	MOORE HAVEN	33471	NA	15.2548	OUT	Y
PUBLIC SCHOOL	RCMA-GLADES EARLY CHILDHOOD	800 SW AVE K	MOORE HAVEN	33471	NA	15.2548	OUT	Y
PUBLIC SCHOOL	GLADES MIGRANT CENTER	400 10TH ST SW	MOORE HAVEN	33471	NA	15.2548	OUT	Y
PUBLIC SCHOOL	GLADES COUNTY SUPERINTENDENT'S OFFICE	400 10TH ST SW	MOORE HAVEN	33471	4	13.2115	OUT	Y

PUBLIC SCHOOL	MIGRANT NON-ENROLLED STUDENTS	400 10TH ST SW	MOORE HAVEN	33471	4	13.2115	OUT	Y
PUBLIC WATER SUPPLY	THE LOFTIS CORPORATION - RIVER HAVEN	RT 1 BOX 472	MOORE HAVEN	33471	NA	16.866	OUT	Y
PUBLIC WATER SUPPLY	MEADOWLARK CAMPGROUND	12525 WILLIAMS RD SW	MOORE HAVEN	33471	NA	NA	OUT	Y
PUBLIC WATER SUPPLY	MOORE HAVEN WATER DEPT	PO BOX 399	MOORE HAVEN	33471	NA	NA	100	N
PUBLIC WATER SUPPLY	WEST GLADES ELEMENTARY SCHOOL WTP	POST OFFICE BOX 459	MOOREHAVEN	33471	NA	NA	OUT	N
PUBLIC WATER SUPPLY	THE LOFTIS CORPORATION - GOLFER'S HAVEN	RT 1 BOX 472	MOOREHAVEN	33471	NA	17.8485	OUT	Y
PUBLIC WATER SUPPLY	FISHEATING CREEK CAMPGROUND	1/2 M NORTH 27 AND 29	PALMDALE	33944	NA	33.501	100	N
PUBLIC WATER SUPPLY	HENDRY'S SABAL PALM CAMPGROUND	P.O. BOX 298	PALMDALE	33944	NA	NA	OUT	Y
SOLID WASTE FACILITY	GLADES COUNTY SLF	W SR78, BETWEEN US27 & HOOVER	MOORE HAVEN	33471	NA	37.0939	100	N
SOLID WASTE FACILITY	ATLAS-TRANSOIL INC	1 FOXMORE LANE	MOORE HAVEN	33471	NA	12.9475	100	Y
SOLID WASTE FACILITY	GLADES CO. SAN. LANDFILL #2	1/4 MI. N OF SR78, W OF US27	MOOREHAVEN	33471	NA	NA	OUT	N
SOLID WASTE FACILITY	PALMDALE LF	5TH ST	PALMDALE	33471	NA	35.7702	OUT	N
SOLID WASTE FACILITY	PALMDALE YARD TRASH COMPOST SITE	OLEANDER AVE	PALMDALE	33471	NA	35.7702	OUT	N
SOLID WASTE FACILITY	ORTONA YARD TRASH COMPOST SITE	SR78 & SAND MINE RD	ORTONA	33471	NA	NA	OUT	N
SOLID WASTE FACILITY	GLADES CO DUMP (COUNTY DATA)		ORTONA	0	NA	NA	OUT	N

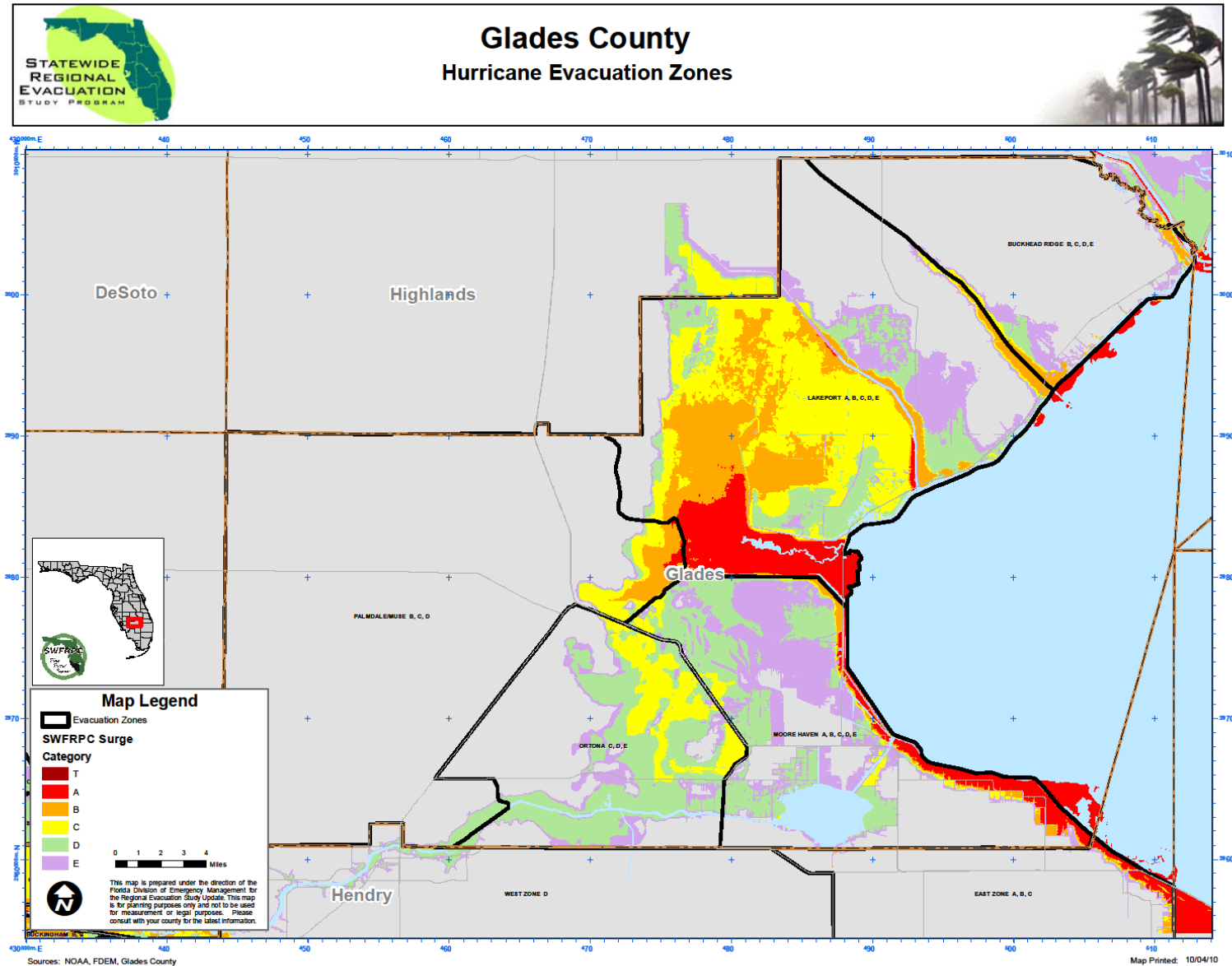
Map IVC-1: Traffic Evacuation Zones



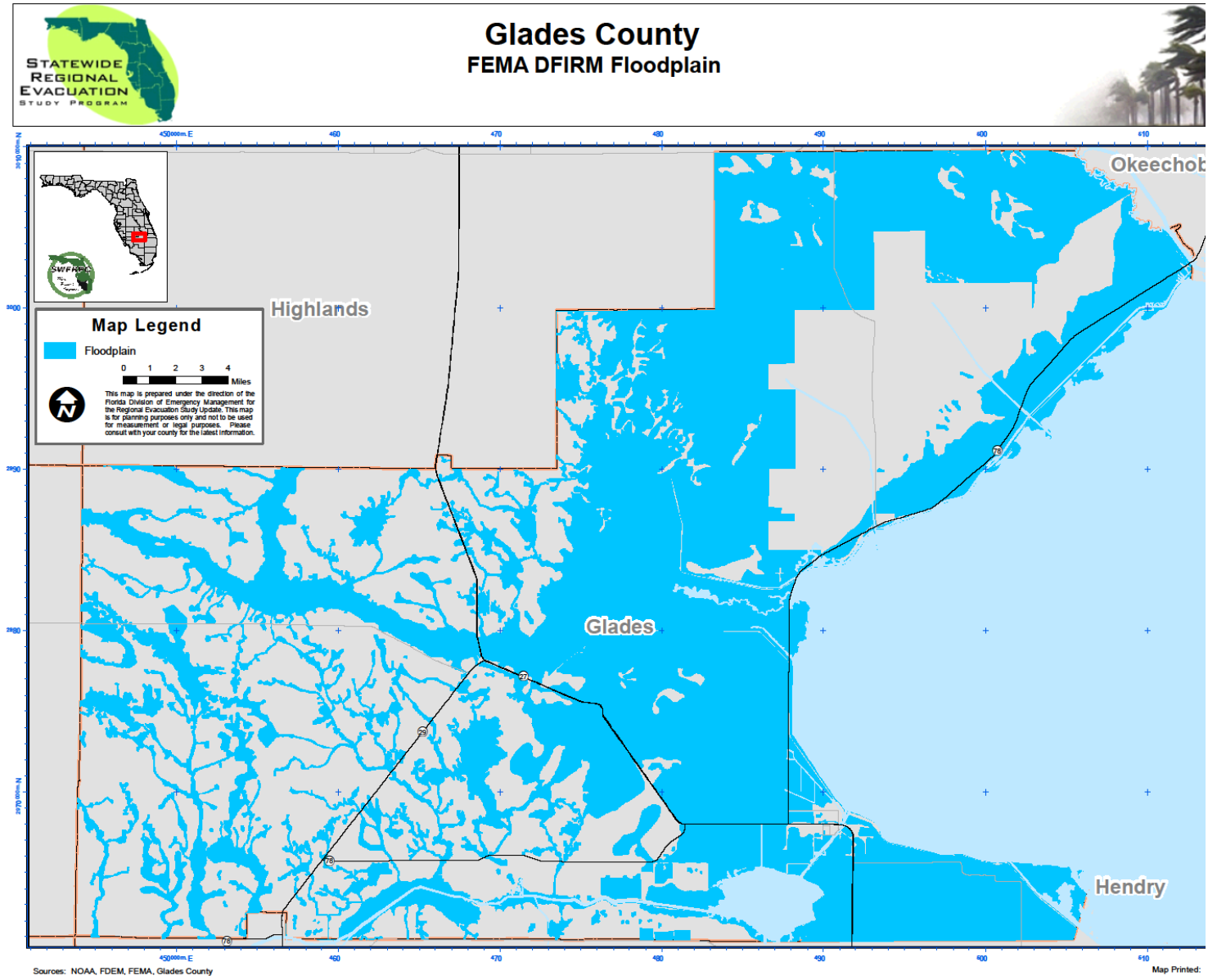
Map IVC-2a: Hurricane Evacuation Zones with Traffic Evacuation Zones



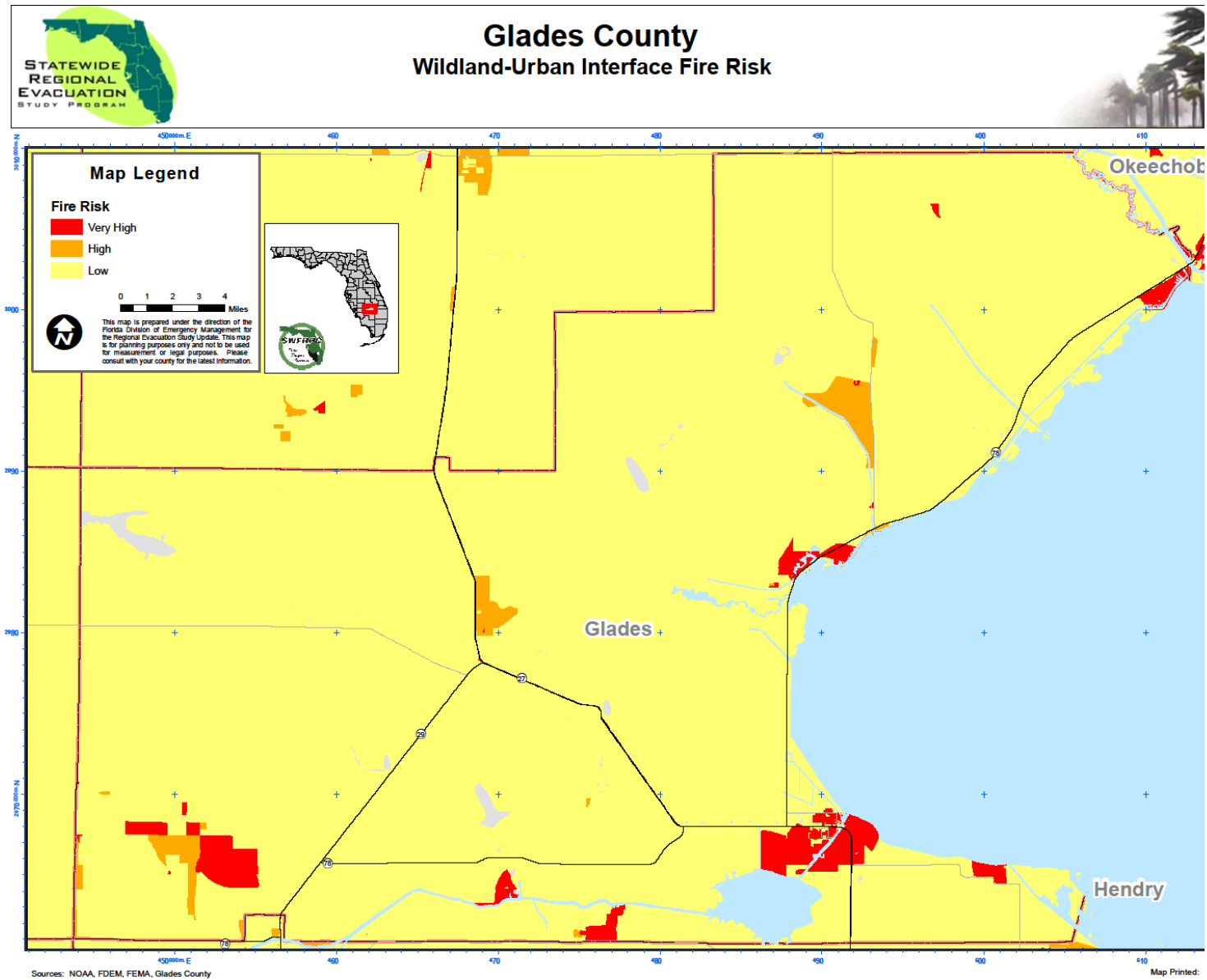
Map IVC-2b: Hurricane Evacuation Zones



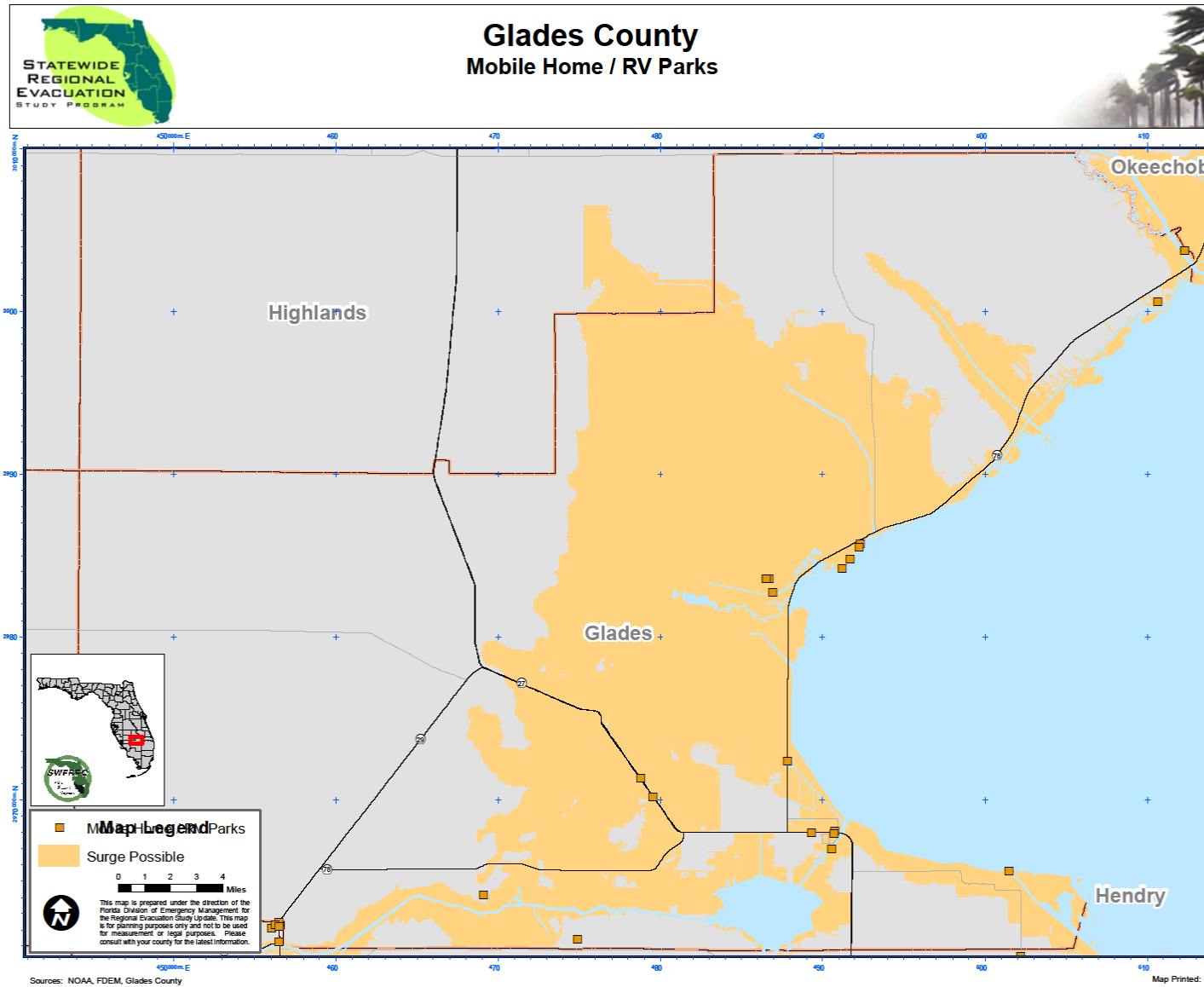
Map IVC- 3: Flood Plain



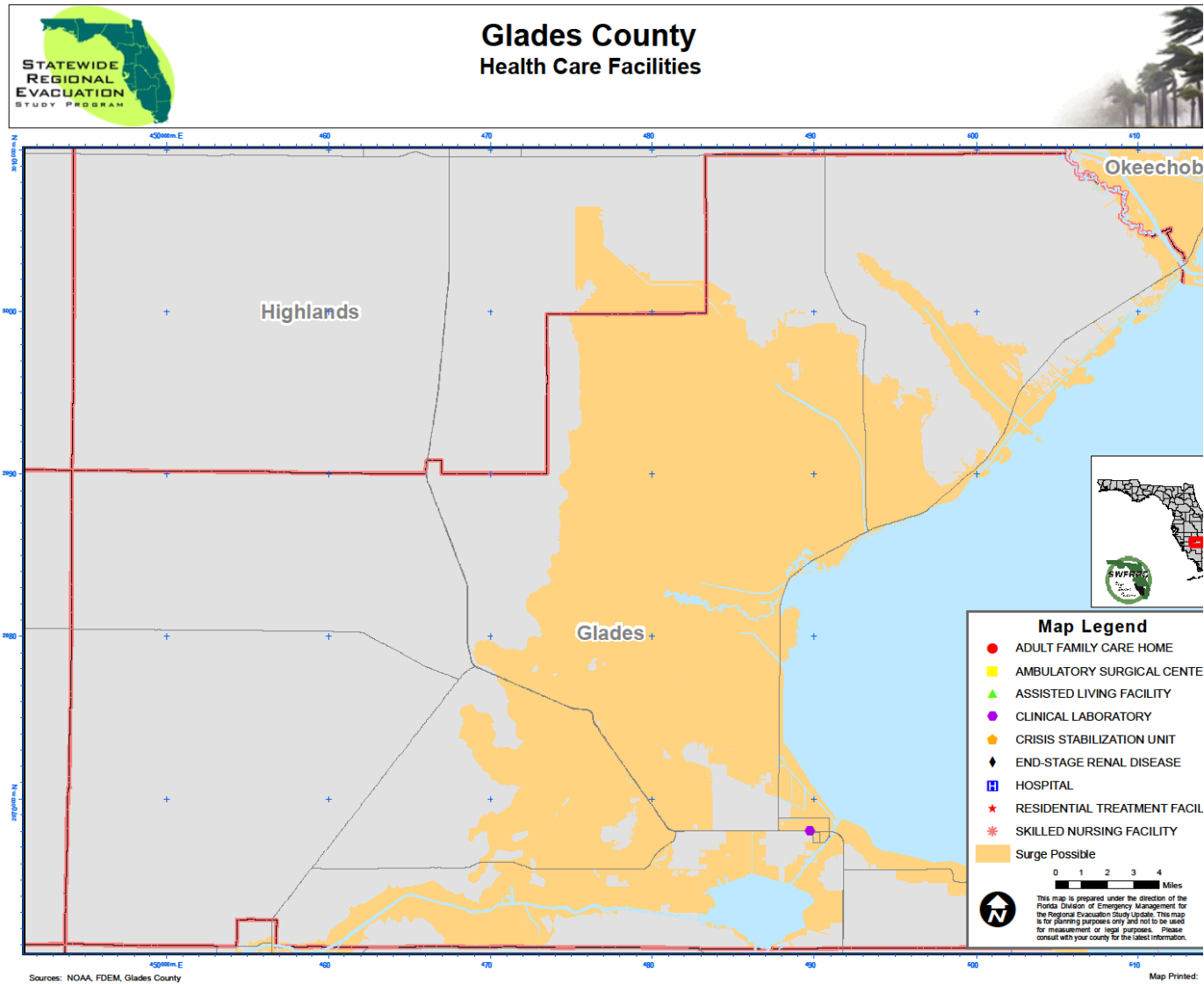
Map IVB- 4: Wildland-Urban Interface Fire Risk



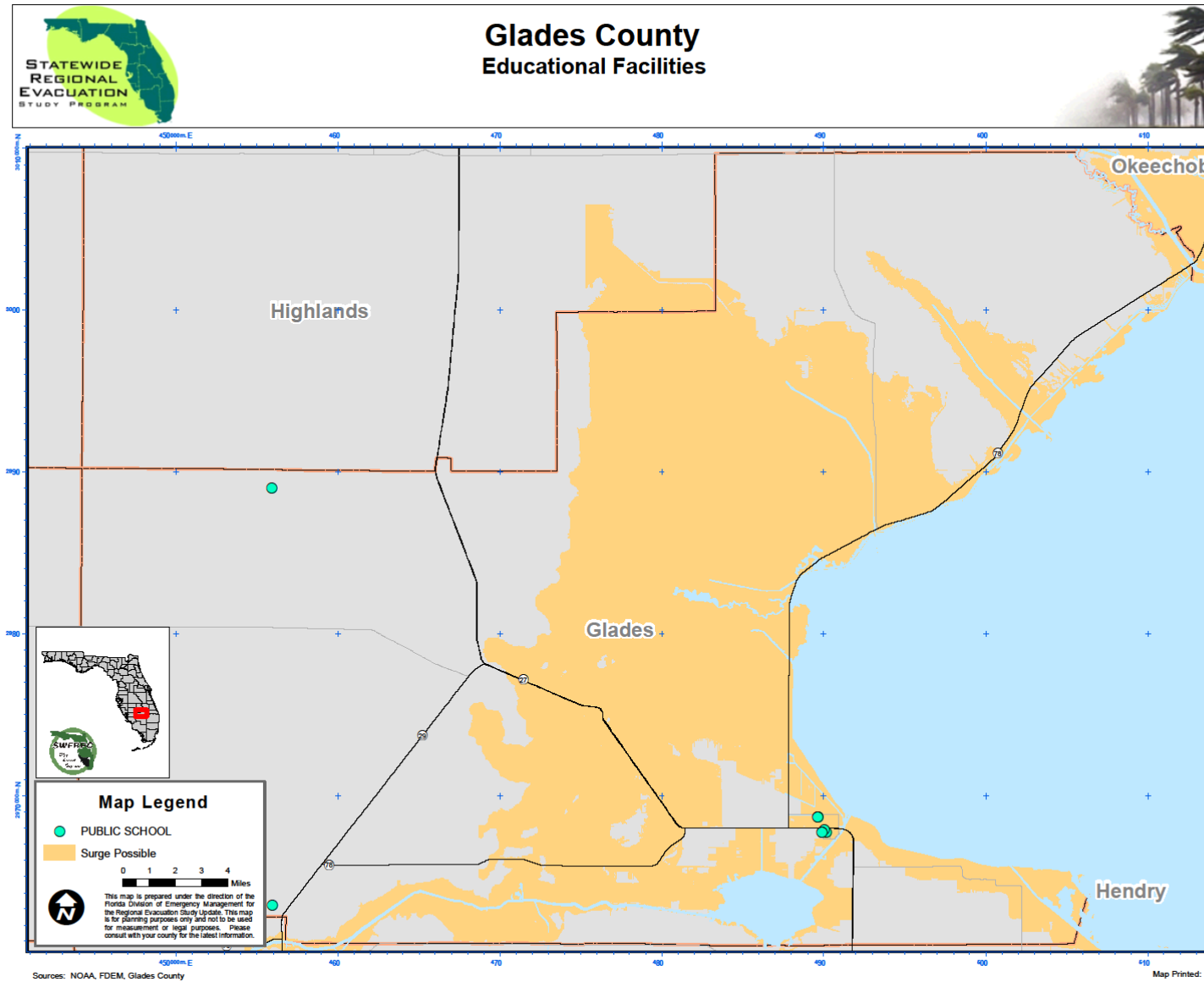
Map IV5-1: Mobile Home / RV Parks



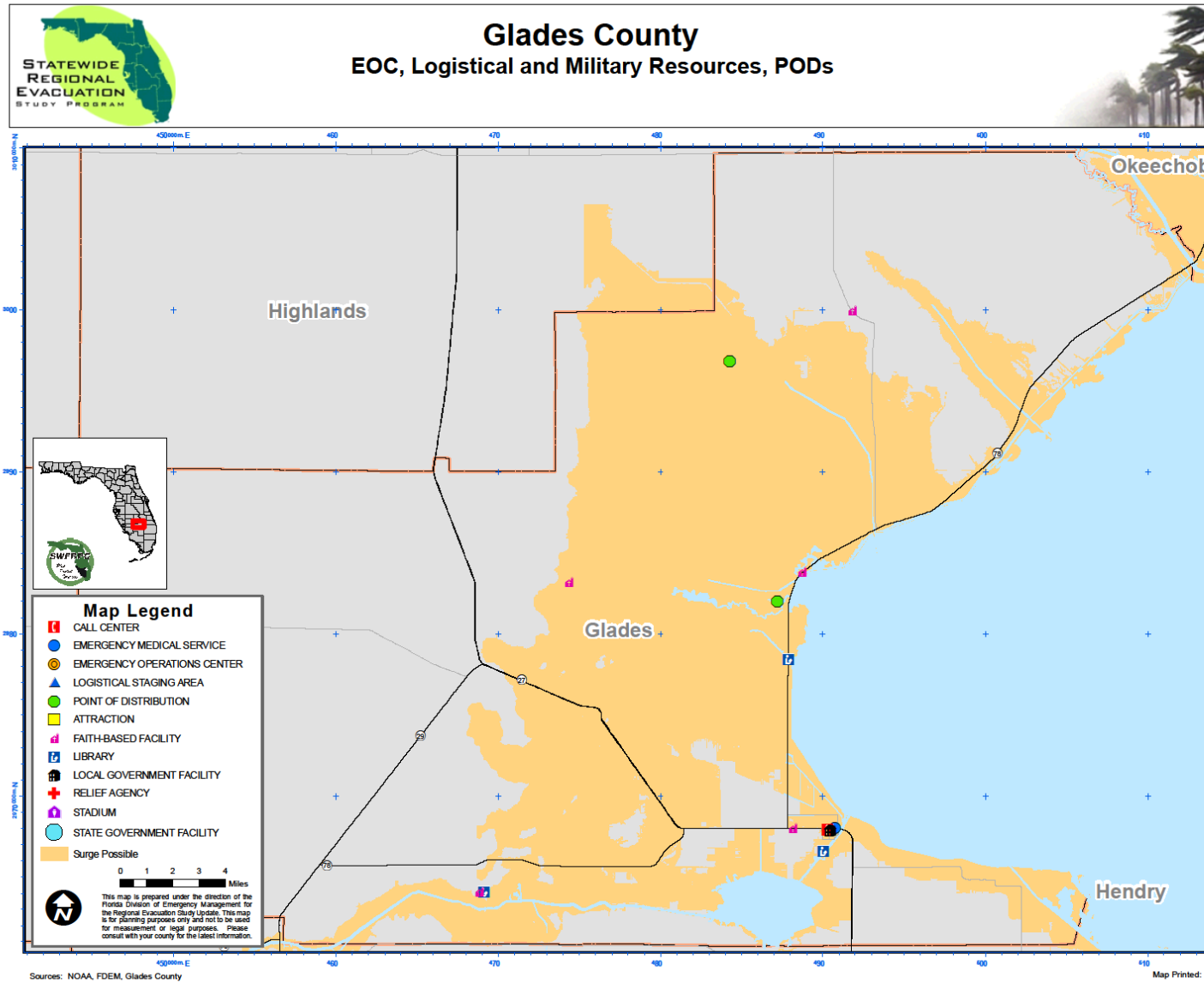
Map 1V-C6: Health Care Facilities



Map IVC-7: Schools and Universities



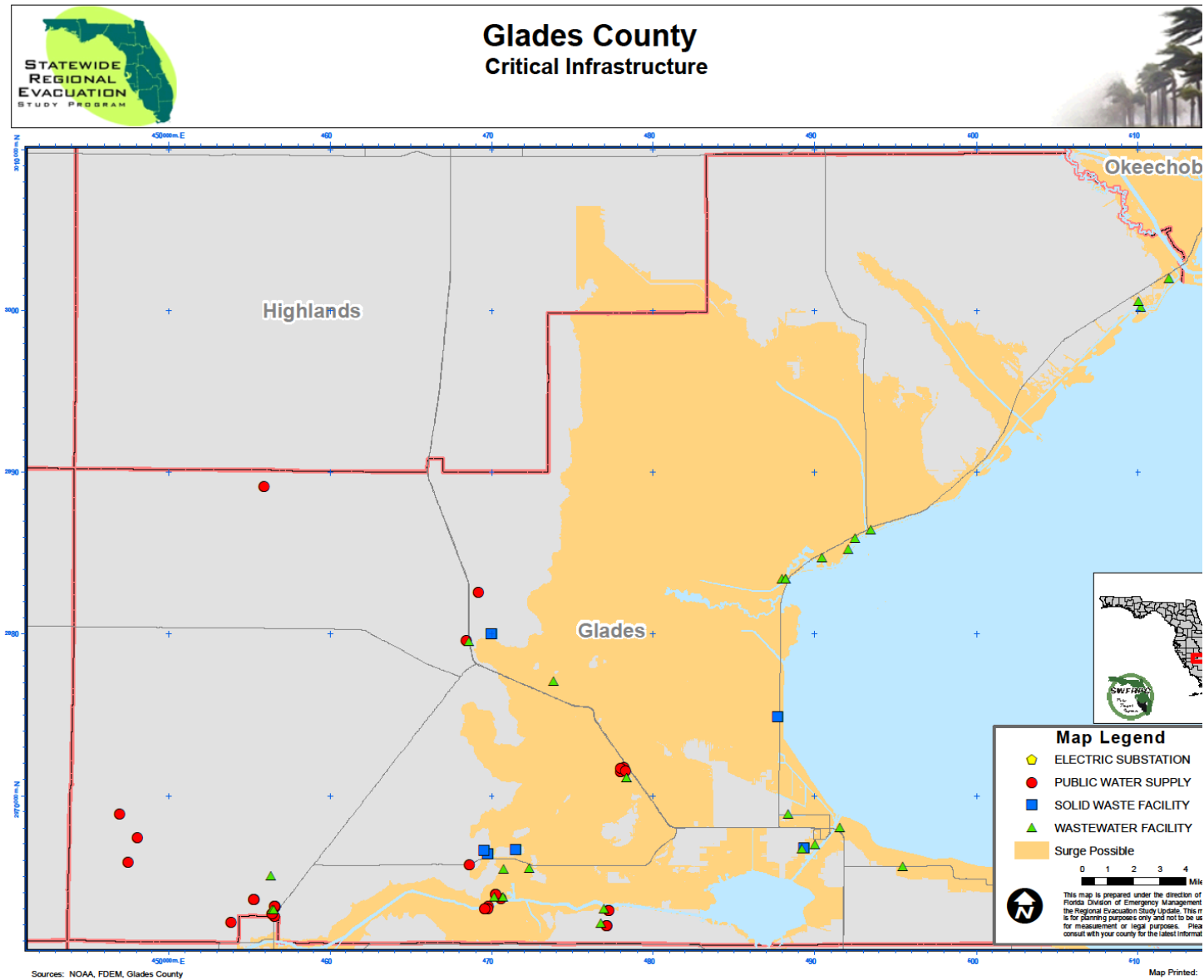
Map IVC-8: EOCs, Logistics and Military Resources, PODs



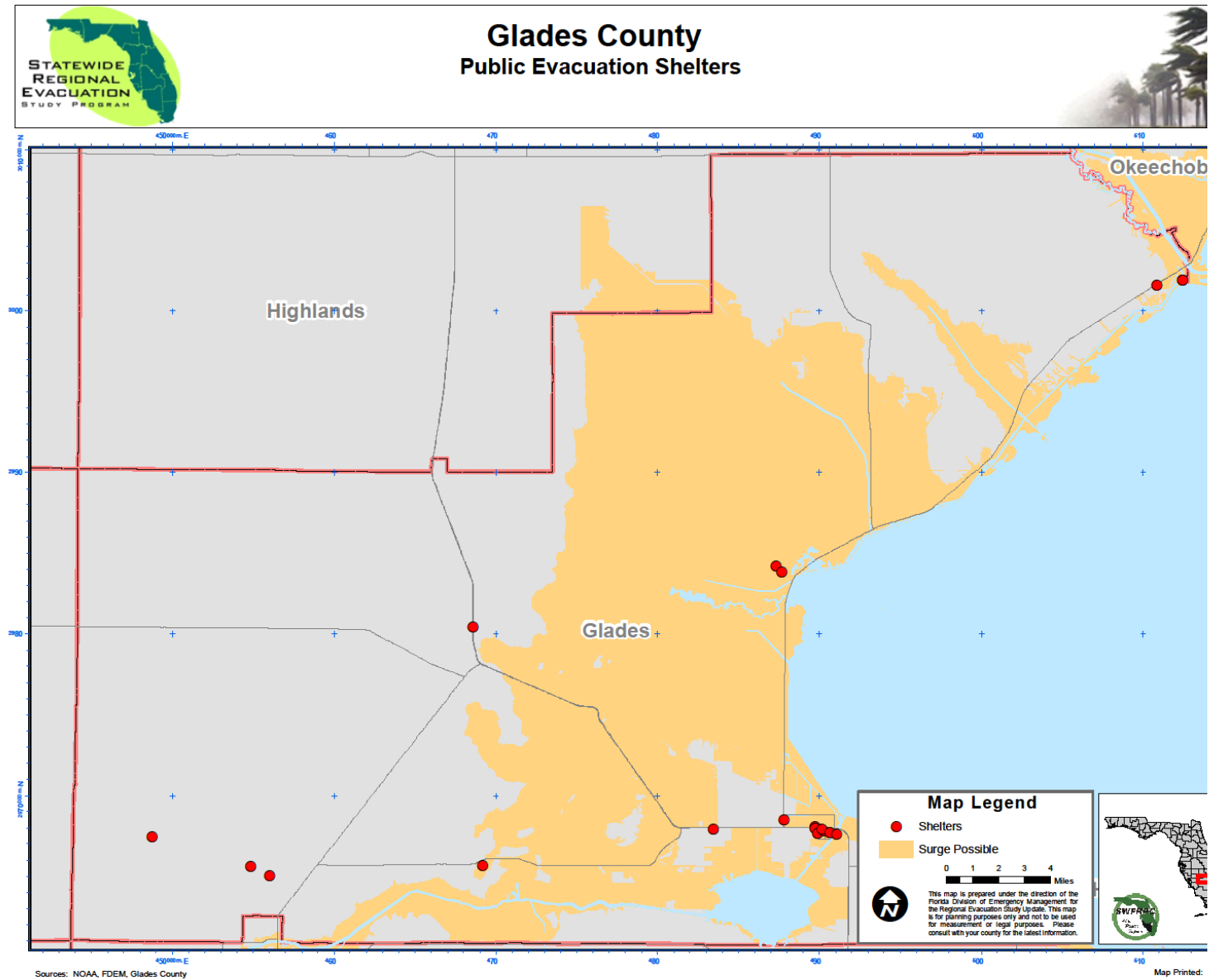
Map IVC-9: Communication Resources

Not Applicable

Map IVC-10: Critical Infrastructure (Water, Waste Water, Landfills, etc.)



Map IVC-11: Public Shelters, 2010



Map IVC-12: County Evacuation Routes Vulnerable To Freshwater Flooding

