



APPENDIX IV-A

Charlotte County Critical Facilities Vulnerability Analysis

CHAPTER IV

REGIONAL VULNERABILITY AND POPULATION ANALYSIS



This page intentionally left blank.

TABLE OF CONTENTS

A.	Introduction	IVA-5
B.	County Profile	IVA-5
C.	Critical Facilities Vulnerability Analysis	IVA-11

List of Tables

IVA-1	Charlotte County Health Care Vulnerability Assessment	IVA-12
IVA-2	Other Critical Facilities Vulnerability Assessment	IVA-17

List of Figures/ Maps

IVA-1	Traffic Evacuation Zones	IVA-36
IVA-2a	Hurricane Evacuation Zones with Traffic Evacuation Zones	IVA-37
IVA-2b	Hurricane Evacuation Zones	IVA-38
IVA-3	Flood Plain	IVA-39
IVA-4	Wildland-Urban Interface Fire Risk	IVA-40
IVA-5	Mobile Home / RV Parks	IVA-41
IVA-6	Health Care Facilities	IVA-42
IVA-7	Schools and Universities	IVA-43
IVA-8	EOCs, Logistical and Military Resources, PODs	IVA-44
IVA-9	Communications Resources	IVA-45
IVA-10	Critical Infrastructure (Water, Waste Water, Landfills, etc)	IVA-46
IVA-11	Public Shelters	IVA-47
IVB-12	County Evacuation Routes Vulnerable to Freshwater Flooding	IVA-48

This page intentionally left blank.

A. Introduction

This appendix provides a County Economic Profile, Vulnerability Profile and a more detailed vulnerability analysis of critical facilities and corresponding maps.

B. County Profile

This section of the report, and the data contained herein, is provided to capture a profile of the county including geographic and economic characteristics not previously discussed in Chapter I. In addition, many of the critical infrastructure partners including private sector and public utilities are identified.

COUNTY PROFILE

(Source: Enterprise Florida, www.eflorida.com/profiles)

GEOGRAPHY

County Seat:	Punta Gorda
Nearest MSA:	Punta Gorda
Time Zone:	Eastern
Local Area Code(s):	941
Largest Cities:	1 Punta Gorda
Miles* To:	
Tallahassee	330
Orlando	132
Tampa	96
Jacksonville	266
Miami	167
Atlanta	542
Chicago	1266
Dallas	1240
New York	1249
*Miles are calculated from county seat.	



POPULATION

	Charlotte	Florida
1980:	58,460	9,746,961
1990:	110,975	12,938,071
2009:	156,952	18,537,969
2015(p):	176,400	19,881,200
2030(p):	212,600	23,821,300

(p) Denotes Projected Population

PER CAPITA PERSONAL INCOME

	Charlotte	Florida
2006	\$34,444	\$38,161
2007	\$35,408	\$39,036
2008	\$35,337	\$39,064

CLIMATE

Average Temperature	High	Low
January:	74	53
July:	91	74
Florida Mean Annual Precipitation		53
Average Annual Rain Days		112

MIGRATION

(2008)

In-Migration	9,849
Out-Migration	8,806
Net-Migration	1,043

*Estimates based on IRS Statistics of Income data

LABOR FORCE

(2009)

Labor Force	69,006
Labor Force % of County Population	44.0
Number in County Unemployed	8,150
Unemployment Rate	11.8%

Monthly labor force data are available from the [Florida Agency for Workforce Innovation](#).

EMPLOYMENT BY INDUSTRY

N/D = No Data

Charlotte

Florida

(2008)

Average Annual Employment	41,719	7,945,162
Natural Resources & Mining	1.5%	1.2%
Construction	8.4%	6.5%
Trade, Transportation and Utilities	24.5%	20.5%
Manufacturing	1.7%	4.7%
Information	1.4%	2.0%
Other Services	3.3%	3.2%
Public administration	8.1%	5.9%
Unclassified	N/D	
Leisure & Hospitality	12.3%	11.9%
Education & Health Services	19.6%	19.4%
Professional & Business Services	7.6%	14.4%
Financial Activities	5.3%	6.6%

Average Annual Wage

(2008)

All Industries	\$32,935
Construction	\$34,152
Education & Health Services	\$41,429
Financial Activities	\$38,212
Information	\$37,006
Leisure & Hospitality	\$15,966
Manufacturing	\$39,378
Natural Resources & Mining	\$24,089
Other Services	\$23,781
Professional & Business Services	\$39,522
Public administration	\$45,857
Trade, Transportation and Utilities	\$25,777
Unclassified	N/D

EXISTING EMPLOYMENT**Major Private Sector Employers**

Wal-Mart Associates, Inc.

Business Line: Retail

Number of Employees..... 1,424

Peace River Regional Medical Center

Business Line: Hospital, Healthcare

Number of Employees..... 1,067

Charlotte Regional Medical Center

Business Line: Hospital, Healthcare

Number of Employees..... 984

Publix Supermarkets

Business Line: Retail

Number of Employees..... 977

Fawcett Memorial Hospital Inc.

Business Line: Hospital, Healthcare

Number of Employees..... 716

Winn Dixie Stores Inc.

Business Line: Retail

Number of Employees..... 352

The Home Depot

Business Line: Retail

Number of Employees..... 337

Suncoast Media Group Inc.

Business Line: Media

Number of Employees..... 325

Palm Automall

Business Line: Car Sales

Number of Employees..... 262

Bealls Department Stores

Business Line: Retail

Number of Employees..... 259

TRANSPORTATION

Federal Interstates	I-75	Nearest Airport with Scheduled Commerical Airline Service:	Sarasota Bradenton International Airport (SRQ)
Federal Highways	US-17; US-41	# Runways	2
		Longest Paved Runway(ft.)	9503
State Highways	SR-31; SR-771; SR-775; SR-776	General Aviation Airports	Charlotte County Airport (PGD)
Railroads	Seminole Gulf Railway	Local Deep Water Port	Port of Manatee
		Miles to Closest Port	60

STATE AND LOCAL TAXATION

COUNTY		STATE	
Countywide Ad Valorem Millage Rates:		Corporate Income Tax	5.5%
Government	5.9096	Personal Income Tax	0.0%
Schools	7.3570	Retail Sales Tax	6.0%
Special	0.0394		
Total	13.3060		
<hr/>			
Ad Valorem Tax Exemption:	Yes		
Retail Sales Tax (Local Option)	1.00		
Federal Enterprise Zone	No		
State Enterprise Zone			

COMMERCIAL/INDUSTRIAL SERVICES**Electric Companies:**

- Florida Power & Light
- Lee County Electric Cooperative

Natural Gas Companies:

- TECO

Telephone Companies:

- Embarq
- Comcast
- Vonage

Water & Sewer Companies:

- Florida Water Services
- Charlotte County Utilities
- City of Punta Gorda
- Englewood Water District
- Charlotte Harbor Water Association

Existing Industrial Zoned Land	Yes
Number of Acres	1,443
Largest Available Contiguous Parcel	500
Industrial Parks	Yes
Number of Acres	2,500
Largest Available Contiguous Parcel	0
Foreign Trade Zones	Yes
Zone Number(s)	213

EDUCATION

	Public Schools	Teachers	Enrollments
Elementary:	11	406	7,443
Secondary:	7	460	10,355
Totals:	18	866	17,798

Private Schools Available: Yes**POST SECONDARY EDUCATION SERVING THE COUNTY:****Colleges/Universities:**

- Florida Gulf Coast University
- Edison State College

Junior/Community Colleges:

- none listed

Vocational/Technical Schools:

- Charlotte Technical Center

Other Schools:

- IMPAC University

MEDIA**Local Radio Stations:**

- WBCG - 98.9 FM
- WCCF - 1580 AM
- WCVU - 104.9 FM
- WENG - 1530 AM
- WIKX - 92.9 FM
- WKII - 1070 AM
- WSEB - 91.3 FM
- WVUJ - 91.7 FM

Local Television Stations:

- SNN - IND
- WBBH - NBC
- WBSV - IND
- WFTX - FOX
- WGCU - PBS
- WINK - CBS
- WZVN - ABC
- WWSB - ABC

Locally Printed Newspapers:

- Charlotte Herald - Tribune
- Englewood Herald Tribune
- Englewood Sun Herald
- Charlotte Sun Herald

FINANCIAL INSTITUTIONS

Number of Banks: 15

Number of Savings and Loans: 0

Number of Credit Unions: 2

QUALITY OF LIFE

Cost of Living	
Price Level Index, (2007)	
Florida State Average = 100	
	Sample
Total	95.26
Food	99.70
Housing	90.77
Medical Care	98.48
Personal Goods and Services	100.42
Transportation	96.99

Medical Services:

- Charlotte Regional Medical Center
- Englewood Community Hospital
- Fawcett Memorial Hospital
- Peace River Regional Medical Center

Recreational Opportunities:

- Beaches
- Boating and Kayaking
- Camping
- Fishing
- Golfing
- Parks
- Wildlife Centers

Historical Points Of Interest:

- A.C. Freeman House
- Blanchard House - African American Heritage Museum
- Charlotte County Cultural Center
- Charlotte County Historical Center
- El Jobean Historical Properties, Inc.
- El Jobean Post Office and General Store
- Historic Train Depot
- Military Heritage & Aviation Museum
- Punta Gorda History Park

Cultural Events/Festivals:

- Annual Punta Gorda Air Show
- Annual Redfish Cup Tournament
- Charlotte Performing Arts Center
- Charlotte Symphony Orchestra
- Preseller Gallery
- Punta Gorda Annual Block Party
- Sea Grape Artists Gallery
- Visual Arts Center

Enterprise Florida, Inc. 800 North Magnolia Avenue, Suite 1100 Orlando, Florida 32803 Phone 407-956-5600 Fax(407)956-5599
Visit us on the World Wide Web: <http://www.eflora.com>

C. Critical Facility Vulnerability Analysis

Considerable staff resources were expended to update the critical facilities inventory. Specific attention was paid to health care facilities such as hospitals and nursing homes; emergency response agencies, hazardous materials, mobile home parks, schools and colleges and community centers. Where possible, communications resources and community infrastructure /utilities such as water and waste-water facilities were located by latitude and longitude and overlaid on the storm tide limits map. Each facility has the facility type, name, location, elevation, flood plain, fire and results of the 2010 surge analysis based on the most accurate topographic data and the SLOSH model.

The Critical Facilities Inventory (Data base) includes a comprehensive list of critical facilities identified by the State and County Emergency Management Agencies. This inventory is not published as part of the report. However, selected facilities which may require evacuation or mitigation are identified in the tables and maps which follow. The tables indicate vulnerability from storm surge (based on the SLOSH model), freshwater flooding (based on the FEMA Flood Maps) and wildfire (Wildfire Interface/Levels of Concern).

Table IVA-1: Charlotte County Health Care Vulnerability Assessment

FACILITY TYPE	NAME	ADDRESS	CITY	ZIP	CAT	EVAC ZONE	FLOOD PLAIN	DEM Elevation	Fire
ASSISTED LIVING FACILITY	ALTERRA STERLING HOUSE OF ENGLEWOOD	550 ROTONDA BLVD. WEST	ROTONDA WEST	33947	2	B	100	8.16	Y
ASSISTED LIVING FACILITY	ALTERRA STERLING HOUSE OF PORT CHARLOTTE	18440 TOLEDO BLADE BLVD.	PORT CHARLOTTE	33952	2	B	OUT	9.68	Y
ASSISTED LIVING FACILITY	ALTERRA STERLING HOUSE OF PUNTA GORDA	250 BAL HARBOR BLVD.	PUNTA GORDA	33950	1	A	100	5.08	N
CLINICAL LABORATORY	AMERICAN MEDIC OF CHARLOTTE COUNTY	2343 AARON ST	PORT CHARLOTTE	33952	2	B	OUT	8.85	N
CLINICAL LABORATORY	ANTONIO L GABARDA MD	2525 HARBOR BLVD #205	PORT CHARLOTTE	33952	2	B	OUT	9.09	N
ADULT FAMILY CARE HOME	BAILEY, EULALEE	1420 CAPRICORN BLVD	PUNTA GORDA	33983	4	D	OUT	21.17	Y
ADULT FAMILY CARE HOME	BAIRD, PHYLLIS	284 COMSTOCK ST	PORT CHARLOTTE	33954	4	D	OUT	24.03	Y
CLINICAL LABORATORY	BRIAN ARDEL MD PA	3417-D TAMIAMI TRL	PORT CHARLOTTE	33952	2	B	100	6.24	N
CLINICAL LABORATORY	CALLMAN & VALENTE MD, PA	2525 HARBOR BLVD	PORT CHARLOTTE	33952	2	B	OUT	9.09	N
CLINICAL LABORATORY	CARDIOLOGY ASSOCIATES OF CHARLOTTE COUNT	4130 TAMIAMI TRAIL	PORT CHARLOTTE	33952	2	B	100	6.78	N
CLINICAL LABORATORY	CHARLES V ALVAREZ MD	21229 OLEAN BLVD SUITE C	PORT CHARLOTTE	33952	2	B	OUT	8.78	N
CRISIS STABILIZATION UNIT	CHARLOTTE COMMUNITY MENTAL HEALTH SERVIC	1700-C EDUCATION AVENUE	PUNTA GORDA	33950	1	A	100	5.61	N
RESIDENTIAL TREATMENT FACILITY	CHARLOTTE COMMUNITY MENTAL HEALTH SERVIC	1700-B EDUCATION AVENUE	PUNTA GORDA	33950	1	A	100	5.61	N
CLINICAL LABORATORY	CHARLOTTE COUNTY HEALTH DEPARTMENT	514 E GRACE ST	PUNTA GORDA	33950	1	A	100	5.04	N
CLINICAL LABORATORY	CHARLOTTE COUNTY HEALTH DEPARTMENT	3280 TAMIAMI TRAIL #27	PORT CHARLOTTE	33954	T		100	4.04	N
CLINICAL LABORATORY	CHARLOTTE COUNTY HEALTH DEPARTMENT	6868 SAN CASA RD	ENGLEWOOD	34224	3	C	OUT	14.82	N
AMBULATORY SURGICAL CENTER	CHARLOTTE ENDOSCOPIC SURGERY CENTER	23970 SUNCOAST BLVD	PORT CHARLOTTE	33980	2	B	OUT	13.56	N

SKILLED NURSING FACILITY	CHARLOTTE HARBOR HEALTHCARE	4000 KINGS HWY	CHARLOTTE HARBOR	33980	2	B	100	8.81	N
HOSPITAL	CHARLOTTE REGIONAL MEDICAL CENTER	809 E. MARION AVENUE	PUNTA GORDA	33950	T		100	3.52	N
CLINICAL LABORATORY	CHARLOTTE REGIONAL MEDICAL CENTER BLOOD	809 E MARION AVE	PUNTA GORDA	33950	T		100	3.52	N
CLINICAL LABORATORY	CHARLOTTE REGIONAL MEDICAL CENTER CLINIC	809 E MARION AVE	PUNTA GORDA	33950	T		100	3.52	N
ADULT FAMILY CARE HOME	CHERY, MARY A.	1048 RENOIR STREET	PORT CHARLOTTE	33952	3	C	OUT	19.02	N
CLINICAL LABORATORY	COASTAL DERMATOLOGY & SKIN CANCER CENTER	3161 HARBOR BLVD STE A	PORT CHARLOTTE	33952	2	B	OUT	8.87	N
ASSISTED LIVING FACILITY	COUNTRY COMFORT	23454 NELSON AVENUE	PORT CHARLOTTE	33954	3	C	OUT	22.62	Y
ASSISTED LIVING FACILITY	COURTYARDS OF HORIZON LLC (THE)	26455 RAMPART BLVD.	PORT CHARLOTTE	33983	3	C	OUT	14.95	N
ADULT FAMILY CARE HOME	DAWKINS GLORIA MILLICENT	22577 QUASAR BLVD	PORT CHARLOTTE	33952	3	C	OUT	17.66	N
SKILLED NURSING FACILITY	DEEP CREEK REHAB AND NURSING CENTER	25325 RAMPART BLVD.	PORT CHARLOTTE	33983	3	C	OUT	17.95	N
ADULT FAMILY CARE HOME	DELCHON, MERTELLA	2532 STARLITE LANE	PORT CHARLOTTE	33952	2	B	OUT	9.65	N
CLINICAL LABORATORY	DERMATOLOGY & SKIN CANCER CENTER/STEPHEN	3280 TAMIAMI TRL #20	PORT CHARLOTTE	33952	2	B	OUT	8.26	N
SKILLED NURSING FACILITY	DOUGLAS JACOBSON STATE VETERANS NURSING	21281 GRAYTON TERRACE	PORT CHARLOTTE	33954	3	C	OUT	17.81	N
SKILLED NURSING FACILITY	ENGLEWOOD HEALTHCARE AND REHABILITATION	1111 DRURY LANE	ENGLEWOOD	34224	2	B	100	4.97	Y
ASSISTED LIVING FACILITY	EUROPEAN MANOR	21000 MIDWAY BLVD	PORT CHARLOTTE	33952	2	B	100	13.24	N
CLINICAL LABORATORY	FAMILY HEALTH CENTERS OF SOUTHWEST FLORI	4120 TAMIAMI TRL STE E	PORT CHARLOTTE	33952	2	B	100	6.58	N
HOSPITAL	FAWCETT MEMORIAL HOSPITAL	21298 OLEAN BLVD	PORT CHARLOTTE	33952	2	B	OUT	9.84	N
CLINICAL LABORATORY	FAWCETT MEMORIAL HOSPITAL PULMONARY/CLINICAL LABORATORY	21298 OLEAN BLVD	PORT CHARLOTTE	33952	2	B	OUT	9.84	N
CLINICAL	FLORIDA CANCER SPECIALISTS	22395 EDGEWATER	PORT	33980	2	B	100	6.03	N

LABORATORY		DR	CHARLOTTE						
CLINICAL LABORATORY	FLORIDA UROLOGY PHYSICIANS PA	100 MADRID BLVD STE 112	PUNTA GORDA	33950	2	B	100	6.42	N
END-STAGE RENAL DISEASE	GULF COAST DIALYSIS INC	3300 TAMIAMI TRAIL	PORT CHARLOTTE	33952	2	B	OUT	8.22	N
CLINICAL LABORATORY	GULF COAST MEDICAL GROUP	21297 OLEAN BLVD	PORT CHARLOTTE	33952	2	B	OUT	8.72	N
AMBULATORY SURGICAL CENTER	GULF POINTE SURGERY CENTER	21260 OLEAN BOULEVARD	PORT CHARLOTTE	33952	2	B	OUT	9.44	N
ASSISTED LIVING FACILITY	HARBOR VIEW ACRES, INC.	24450 HARBORVIEW ROAD	PORT CHARLOTTE	33980	2	B	OUT	9.91	N
CLINICAL LABORATORY	HARBORSIDE INTERNAL MEDICINE PA	522 E MARION AVE #201	PUNTA GORDA	33950	T		100	3.25	N
AMBULATORY SURGICAL CENTER	HARBORSIDE SURGERY CENTER	610 EAST OLYMPIA AVENUE, SUITE 100	PUNTA GORDA	33950	T		100	2.41	N
SKILLED NURSING FACILITY	HARBOUR HEALTH CENTER	23013 WESTCHESTER BLVD.	PORT CHARLOTTE	33980	2	B	100	7.03	N
SKILLED NURSING FACILITY	HQM OF PORT CHARLOTTE	4033 BEAVER LANE	PORT CHARLOTTE	33952	2	B	100	5.81	N
ADULT FAMILY CARE HOME	JACKSON, CLAUDETTE	2408 JAMAICA ST	PORT CHARLOTTE	33980	2	B	OUT	11.97	N
ADULT FAMILY CARE HOME	JACKSON, JULLIET C.	17345 EDGEWATER DRIVE	PUNTA GORDA	33948	1	A	100	3.30	Y
CLINICAL LABORATORY	JAY S HERBST MD PA	2886 A TAMIAMI TRL	PORT CHARLOTTE	33952	2	B	OUT	9.45	N
CLINICAL LABORATORY	JOHN J JANICK MD PA	4369 TAMIAMI TRAIL	CHARLOTTE HARBOR	33980	2	B	100	6.37	N
CLINICAL LABORATORY	KIANOOSH KAVEH DO PA	150 W MCKENZIE SUITE 117	PUNTA GORDA	33950	1	A	100	4.14	N
ASSISTED LIVING FACILITY	KIMBERLY PLACE OF PORT CHARLOTTE, INC.	26315 NORTHERN CROSS ROAD	PUNTA GORDA	33983	3	C	OUT	21.01	Y
ASSISTED LIVING FACILITY	LEXINGTON MANOR	20480 VETERANS BLVD.	PORT CHARLOTTE	33954	3	C	OUT	16.51	Y
SKILLED NURSING FACILITY	LIFE CARE CENTER OF PUNTA GORDA	450 SHREVE STREET	PUNTA GORDA	33950	T		100	1.87	N
ASSISTED LIVING	LIZ'S ADULT CARE GARDEN HOME	1222 ZINNEA	PORT	33952	2	B	OUT	13.00	N

FACILITY	FACILITY	STREET	CHARLOTTE						
CLINICAL LABORATORY	MANUEL H HERNANDEZ MD PA	2484 CARING WAY # C	PORT CHARLOTTE	33952	2	B	OUT	9.78	N
CLINICAL LABORATORY	MARC A MELSER MD PL	3410 TAMIAMI TRL # 4	PORT CHARLOTTE	33952	2	B	100	8.19	N
CLINICAL LABORATORY	MEDICAL PAVILION CLINIC	2525 HARBOR BLVD #102	PORT CHARLOTTE	33952	2	B	OUT	9.09	N
AMBULATORY SURGICAL CENTER	MURDOCK AMBULATORY SURGERY CENTER	1400 EDUCATION WAY	PORT CHARLOTTE	33948	2	B	OUT	11.43	Y
CLINICAL LABORATORY	MURDOCK FAMILY MEDICINE PA	19531 COCHRAN BLVD	PORT CHARLOTTE	33948	2	B	OUT	12.08	N
CLINICAL LABORATORY	NANCY HUNDT MD PA	425 CROSS ST # 311	PUNTA GORDA	33950	1	A	100	3.50	N
ADULT FAMILY CARE HOME	NELSON, SHARON MARCIA	21459 SEATON AVENUE	PORT CHARLOTTE	33954	3	C	OUT	18.06	Y
ASSISTED LIVING FACILITY	NEW HORIZONS ADULT LIVING INC.	1391 CAPRICORN BLVD.	PUNTA GORDA	33983	4	D	OUT	21.61	Y
ADULT FAMILY CARE HOME	PARKES, ROSYLIN	23442 GARRETT AVE	PORT CHARLOTTE	33954	3	C	OUT	21.46	Y
ADULT FAMILY CARE HOME	PATTON, ALBERTHA	2311 BRIARWOOD STREET	PORT CHARLOTTE	33952	2	B	OUT	11.99	N
ASSISTED LIVING FACILITY	PEACE RIVER MANOR INC	315 ADDISON DRIVE	PORT CHARLOTTE	33953	2	B	OUT	7.52	N
SKILLED NURSING FACILITY	PEACE RIVER NURSING AND REHABILITATION C	2370 HARBOR BLVD.	PORT CHARLOTTE	33952	2	B	OUT	10.19	N
HOSPITAL	PEACE RIVER REGIONAL MEDICAL CENTER	2500 HARBOUR BLVD.	PORT CHARLOTTE	33952	2	B	OUT	9.08	N
CLINICAL LABORATORY	PEACE RIVER REGIONAL MEDICAL CENTER CARD	2500 HARBOR BLVD	PORT CHARLOTTE	33952	2	B	OUT	9.08	N
CLINICAL LABORATORY	PEACE RIVER REGIONAL MEDICAL CENTER CLIN	2500 HARBOR BLVD	PORT CHARLOTTE	33952	2	B	OUT	9.08	N
END-STAGE RENAL DISEASE	PORT CHARLOTTE ARTIFICIAL KIDNEY CENTER	2525 HARBOR BLVD.	PORT CHARLOTTE	33952	2	B	OUT	9.09	N
AMBULATORY SURGICAL CENTER	PROMENADES SURGERY CENTER, LC	3222 TAMIAMI TRAIL	PORT CHARLOTTE	33952	2	B	OUT	8.26	N
CLINICAL LABORATORY	PULMONARY STUDIES INC	2616 TAMIAMI TRL #1	PORT CHARLOTTE	33952	2	B	OUT	9.22	N
ASSISTED LIVING FACILITY	PUNTA GORDA ELDERLY CARE CENTER, INC.	2295 SHREVE STREET	PUNTA GORDA	33950	1	A	100	4.14	N

END-STAGE RENAL DISEASE	RAI CARE CENTERS - PUNTA GORDA	355 DUPONT STREET	PUNTA GORDA	33950	T		100	3.43	N
ASSISTED LIVING FACILITY	REGENTS CLUB, LLC	22332 VICK STREET	PORT CHARLOTTE	33980	2	B	100	5.83	N
CLINICAL LABORATORY	ROBERT M CASE DPM	2866-C TAMIAMI TRL	PORT CHARLOTTE	33952	2	B	OUT	9.36	N
ADULT FAMILY CARE HOME	ROWE, GWENDOLYN	23529 QUASAR BLVD.	PORT CHARLOTTE	33952	4	D	OUT	21.70	N
ASSISTED LIVING FACILITY	ROYAL PALM RET CENTRE	2500 AARON STREET	PORT CHARLOTTE	33952	2	B	OUT	8.68	N
ASSISTED LIVING FACILITY	SANDHILL GARDENS RETIREMENT CENTER	24949 SANDHILL BLVD.	PUNTA GORDA	33983	4	D	OUT	24.79	Y
CLINICAL LABORATORY	SHEILA DAWN HENDERSON DO	2400 HARBOR BLVD	PORT CHARLOTTE	33952	2	B	OUT	9.91	N
CLINICAL LABORATORY	SOUTHWEST FLORIDA UROLOGIC ASSOCIATES	3161 HARBOR BLVD UNIT D	PORT CHARLOTTE	33952	2	B	OUT	8.87	N
AMBULATORY SURGICAL CENTER	ST LUCY'S OUTPATIENT SURGICAL CENTER	21275 OLEAN BOULEVARD	PORT CHARLOTTE	33952	2	B	OUT	8.81	N
ADULT FAMILY CARE HOME	STENSTROM, JUDY LEE	13519 LONGWOOD AVENUE	PORT CHARLOTTE	33981	2	B	100	6.67	Y
CLINICAL LABORATORY	STEPHEN A SPENCER MD PA	1111 TAMIAMI TRAIL	PUNTA GORDA	33950	1	A	100	4.99	N
CLINICAL LABORATORY	SUNRISE CLINICAL LABORATORY	21216 OLEAN BLVD # 3	PORT CHARLOTTE	33952	2	B	OUT	8.02	N
SKILLED NURSING FACILITY	TANDEM HEALTH CARE OF PORT CHARLOTTE	18480 TOLEDO BLADE BLVD.	PORT CHARLOTTE	33948	2	B	OUT	10.83	Y
CLINICAL LABORATORY	THOMAS J KUB MD PA	2595 HARBOR BLVD #101	PORT CHARLOTTE	33952	2	B	OUT	9.60	N
CLINICAL LABORATORY	TIFFANY SQUARE FAMILY PRACTICE	2828 S MCCALL RD SUITE 21	ENGLEWOOD	34224	2	B	OUT	7.83	Y
ADULT FAMILY CARE HOME	VANAMBURG, PATRICIA M	6355 FACET LANE	PUNTA GORDA	33981	2	B	100	6.03	Y
ASSISTED LIVING FACILITY	VILLAGE PLACE	18400 COCHRAN BLVD.	PORT CHARLOTTE	33948	2	B	OUT	10.64	Y
ASSISTED LIVING FACILITY	WESTCHESTER CLUB AND HARBOUR TERRACE	23013 WESTCHESTER BLVD	PORT CHARLOTTE	33980	2	B	100	7.03	N
ASSISTED LIVING FACILITY	YOUNG AT HEART ADULT CARE CENTER	26563 SANDHILL BLVD.	PUNTA GORDA	33983	3	C	OUT	20.54	Y

Table IVA-2: Other Facilities Vulnerability Assessment

FACILITY	NAME	ADDRESS	CITY	ZIP	SURGE	DEM Elevation	FLOOD	FIRE
AIRPORT	BUCHAN		ENGLEWOOD		3	13.83	OUT	Y
AIRPORT	CHARLOTTE COUNTY		PUNTA GORDA		4	20.7757	OUT	N
AIRPORT	SHELL CREEK AIRPARK		PUNTA GORDA		3	18.8994	OUT	N
AIRPORT	PAYSON RANCH		PUNTA GORDA		NA	NA	OUT	N
AIRPORT	FRED BABCOCK		PUNTA GORDA		NA	37.4202	U	N
AIRPORT	BABCOCK H.Q.		PUNTA GORDA		NA	NA	U	N
AIRPORT	ROTONDA INTL		PLACIDA		T	2.83368	100	N
ATTRACTION	CYPRESS GROUP (PORT CHARLOTTE)	TOWNE CENTER MALL HWY. 41 N.	PORT CHARLOTTE		2	12.8	OUT	N
ATTRACTION	SUN FLEA MARKET, INC. (KIDSTAR)	18505 PAULSON DRIVE (KIDSTAR)	PORT CHARLOTTE		2	13.2089	OUT	N
CALL CENTER	CHARLOTTE COUNTY SHERIFF'S DEPT. HEADQUARTERS	7474 UTILITIES RD	PUNTA GORDA	33982	3	17.3844	OUT	N
CALL CENTER	PUNTA GORDA POLICE DEPT HEADQUARTERS	1410 S TAMIAMI TRL	PUNTA GORDA	33950	2	7.63034	100	N
CORRECTIONAL FACILITY	CROSSROADS WILDERNESS INSTITUTE	45991 BERMONT RD	PUNTA GORDA	33982	NA	52.6735	OUT	N
CORRECTIONAL FACILITY	CHARLOTTE CORRECTIONAL INST	33123 OIL WELL RD	PUNTA GORDA	33955	4	24.7263	U	N
CORRECTIONAL FACILITY	CHARLOTTE CO JAIL/SHERIFF DEPT	7474 UTILITIES RD	PUNTA GORDA	33982	3	17.2775	OUT	N
ELECTRIC SUBSTATION	HARBOR		CHARLOTTE HARBOR	33980	2	6.4572	100	N
ELECTRIC SUBSTATION	MYAKKA		ENGLEWOOD	34223	3	11.35	500	Y
ELECTRIC SUBSTATION	ENGLEWOOD		ENGLEWOOD	34295	2	9.96	500	N
ELECTRIC SUBSTATION	PUNTA		PUNTA GORDA	33950	2	5.93336	100	N
ELECTRIC SUBSTATION	ROTUNDA		ROTONDA	34224	2	7.72274	100	Y
ELECTRIC SUBSTATION	CLEVELAND		HARBOUR HEIGHTS	33983	4	26.7713	OUT	Y
ELECTRIC SUBSTATION	MURDOCK		MURDOCK	33948	2	10.4791	OUT	N
ELECTRIC SUBSTATION	FRANKLIN		MURDOCK	33953	2	11.3079	OUT	N
ELECTRIC	CHARLOTTE		CLEVELAND	33982	3	16.6126	OUT	Y

SUBSTATION								
ELECTRIC SUBSTATION	DEEP CREEK		CLEVELAND	33982	3	15.1479	OUT	Y
EMERGENCY MEDICAL SERVICE	SARASOTA CO FD STATION 71	599 S INDIANA AVE	ENGLEWOOD	34223	3	11.66	500	Y
EMERGENCY MEDICAL SERVICE	SARASOTA CO FD STATION 73	1390 OLD ENGLEWOOD RD	ENGLEWOOD	34223	3	13.45	500	Y
EMERGENCY MEDICAL SERVICE	AMBITRANS MEDICAL TRANSPORT	22093 KIMBLE AVE	PORT CHARLOTTE	33952	2	7.7316	100	N
EMERGENCY MEDICAL SERVICE	CHARLOTTE CO FIRE/EMS DEPT	22429 EDGEWATER DR	PORT CHARLOTTE	33980	1	5.02443	100	N
EMERGENCY MEDICAL SERVICE	AIR TREK MEDICAL TRANSPORT	28000 AIRPORT RD STE A5	PUNTA GORDA	33982	4	20.7682	OUT	N
EMERGENCY OPERATIONS CENTER	CHARLOTTE COUNTY EMERGENCY MANAGEMENT	7474 UTILITIES ROAD	PUNTA GORDA	33982	3	17.0235	OUT	N
FAITH-BASED FACILITY	PLACIDA CHURCH		ENGLEWOOD		2	7.63988	100	N
FAITH-BASED FACILITY	FIRST ASSEMBLY OF GOD CHURCH		TUCKERS CORNER		4	28.8788	500	N
FIRE STATION	BOCA GRANDE FD	360 E RAILROAD AVE	BOCA GRANDE	33921	2	4.71495	100	N
FIRE STATION	SARASOTA CO FD ST 71	599 S INDIANA AVE	ENGLEWOOD	34223	3	11.72	500	Y
FIRE STATION	ENGLEWOOD FD ST 72	5060 PLACIDA RD	ENGLEWOOD	34224	2	8.06258	100	N
FIRE STATION	SARASOTA CO FD ST 73	1967 ENGLEWOOD RD	ENGLEWOOD	34223	3	12.21	500	Y
FIRE STATION	CHARLOTTE COUNTY FIRE & EMS ST 13	6868 SAN CASA DR	ENGLEWOOD	34224	4	15.6725	OUT	N
FIRE STATION	SARASOTA CO FIRE STATION 73	1967 ENGLEWOOD RD	ENGLEWOOD	34223	3	11.26	500	Y
FIRE STATION	SARASOTA COUNTY FIRE STATION 71	599 S INDIANA AVE	ENGLEWOOD	34223	3	11.2	500	Y
FIRE STATION	SARASOTA CO FD ST 22	4531 ENGLEWOOD RD	ENGLEWOOD	34293	3	15.27	OUT	N
FIRE STATION	CHARLOTTE COUNTY FIRE & EMS ST 2	1493 COLLINGSWOOD BLVD	PORT CHARLOTTE	33948	2	10.7854	OUT	N
FIRE STATION	CHARLOTTE COUNTY FIRE & EMS ST 1	3631 TAMiami TRL	PORT CHARLOTTE	33952	2	6.84896	100	N
FIRE STATION	CHARLOTTE COUNTY FIRE & EMS ST 3	4322 EL JOBEAN RD	PORT CHARLOTTE	33953	2	6.09507	100	Y
FIRE STATION	CHARLOTTE COUNTY FIRE & EMS-HQ	22429 EDGEWATER DR	PORT CHARLOTTE	33980	1	5.02443	100	N
FIRE STATION	CHARLOTTE COUNTY FIRE & EMS ST 4	13600 MARATHON BLVD	PORT CHARLOTTE	33981	2	8.07916	100	Y
FIRE STATION	CHARLOTTE COUNTY FIRE &	2001 LUTHER RD	PORT CHARLOTTE	33983	3	19.0153	OUT	N

	EMS ST 12							
FIRE STATION	CHARLOTTE COUNTY FIRE AND EMS STATION 9	12900 STATE HIGHWAY 31	PUNTA GORDA	33955	5	30.4713	U	N
FIRE STATION	CHARLOTTE COUNTY FIRE & EMS ST 7	3624 ASH ST	PUNTA GORDA	33950	T	2.53437	100	Y
FIRE STATION	CHARLOTTE COUNTY FIRE & EMS ST 5	26287 NOTRE DAME BLVD	PUNTA GORDA	33955	3	14.5659	U	Y
FIRE STATION	CHARLOTTE COUNTY FIRE & EMS ST 6	27287 DISSTON AVE	PUNTA GORDA	33982	2	9.61734	OUT	N
FIRE STATION	CHARLOTTE COUNTY FIRE & EMS ST 11	27055 RUSHMORE AVE	PUNTA GORDA	33983	2	11.2316	OUT	Y
FIRE STATION	PUNTA GORDA FD ST 2	10051 BURNT STORE RD	PUNTA GORDA	33950	2	8.08321	100	Y
FIRE STATION	PUNTA GORDA FD ST 1	1410 TAMIAMI TRL	PUNTA GORDA	33950	2	7.57967	100	N
FIRE STATION	PUNTA GORDA FIRE ST 3	1623 AQUI ESTA DR	PUNTA GORDA	33950	1	6.07737	100	N
FIRE STATION	SARASOTA CO FD ST 74	403 BOUNDARY BLVD	PLACIDA	33947	2	7.62129	OUT	N
FIRE STATION	CHARLOTTE COUNTY FIRE & EMS ST 14	9495 PLACIDA RD	PLACIDA	33946	1	2.62001	100	Y
FIRE STATION	CHARLOTTE COUNTY FIRE & EMS ST 10	101 GASPARILLA WAY	PLACIDA	33921	T	3.62128	100	N
FUEL FACILITY - ALONG EVACUATION ROUTE	8503009		Charlotte Harbor		1	5.4383	100	N
FUEL FACILITY - ALONG EVACUATION ROUTE	8519032		Charlotte Harbor		2	5.27769	100	N
FUEL FACILITY - ALONG EVACUATION ROUTE	8518999		Charlotte Harbor		2	6.86866	100	N
FUEL FACILITY - ALONG EVACUATION ROUTE	8518982		Charlotte Harbor		1	5.29473	100	N
FUEL FACILITY - ALONG EVACUATION ROUTE	8518965		Charlotte Harbor		2	7.60489	100	N
FUEL FACILITY - ALONG EVACUATION ROUTE	9803405		Charlotte Harbor		2	7.24316	100	N
FUEL FACILITY - ALONG EVACUATION ROUTE	9401006		Charlotte Park		T	3.19439	100	Y
FUEL FACILITY -	8631238		Englewood		2	8.1	100	Y

ALONG EVACUATION ROUTE								
FUEL FACILITY - ALONG EVACUATION ROUTE	8627492		Englewood		2	7.17	100	Y
FUEL FACILITY - ALONG EVACUATION ROUTE	8631190		Englewood		3	11.21	500	Y
FUEL FACILITY - ALONG EVACUATION ROUTE	9802919		Englewood		2	11.03	OUT	Y
FUEL FACILITY - ALONG EVACUATION ROUTE	8519012		Englewood		2	9.61	OUT	Y
FUEL FACILITY - ALONG EVACUATION ROUTE	8502986		Englewood		2	7.17	100	N
FUEL FACILITY - ALONG EVACUATION ROUTE	8945143		Englewood		2	9.56	100	Y
FUEL FACILITY - ALONG EVACUATION ROUTE	8735459		Englewood		3	11.48	500	Y
FUEL FACILITY - ALONG EVACUATION ROUTE	9046284		Port Charlotte		3	13.0589	100	N
FUEL FACILITY - ALONG EVACUATION ROUTE	8628528		Port Charlotte		2	6.86182	100	N
FUEL FACILITY - ALONG EVACUATION ROUTE	8518950		Port Charlotte		2	8.82357	OUT	N
FUEL FACILITY - ALONG EVACUATION ROUTE	8502990		Port Charlotte		2	7.25264	100	N
FUEL FACILITY - ALONG EVACUATION ROUTE	8519048		Port Charlotte		2	8.40095	OUT	N
FUEL FACILITY - ALONG EVACUATION ROUTE	9047301		Port Charlotte		2	10.0033	OUT	N
FUEL FACILITY -	8628437		Port Charlotte		2	11.9711	OUT	N

ALONG EVACUATION ROUTE								
FUEL FACILITY - ALONG EVACUATION ROUTE	8519045		Port Charlotte		2	8.20441	OUT	N
FUEL FACILITY - ALONG EVACUATION ROUTE	8518973		Port Charlotte		2	6.37085	100	N
FUEL FACILITY - ALONG EVACUATION ROUTE	9601675		Port Charlotte		2	8.57592	OUT	N
FUEL FACILITY - ALONG EVACUATION ROUTE	9803196		Port Charlotte		2	12.5418	OUT	N
FUEL FACILITY - ALONG EVACUATION ROUTE	8626553		Port Charlotte		2	8.27137	OUT	N
FUEL FACILITY - ALONG EVACUATION ROUTE	8519013		Port Charlotte		2	9.63441	OUT	N
FUEL FACILITY - ALONG EVACUATION ROUTE	9046767		Punta Gorda		2	7.47206	100	Y
FUEL FACILITY - ALONG EVACUATION ROUTE	8518984		Punta Gorda		1	4.95263	100	N
FUEL FACILITY - ALONG EVACUATION ROUTE	8518970		Punta Gorda		2	6.09554	100	N
FUEL FACILITY - ALONG EVACUATION ROUTE	8502989		Punta Gorda		1	5.0679	100	N
FUEL FACILITY - ALONG EVACUATION ROUTE	8502999		Punta Gorda		1	4.26037	100	N
FUEL FACILITY - ALONG EVACUATION ROUTE	9045849		Punta Gorda		2	6.29377	100	Y
FUEL FACILITY - ALONG EVACUATION ROUTE	8840280		Solana		2	4.60995	100	N
FUEL FACILITY -	9806850		Cleveland		2	6.386	100	N

ALONG EVACUATION ROUTE								
FUEL FACILITY - ALONG EVACUATION ROUTE	9046660		Cleveland		2	6.92353	100	N
FUEL FACILITY - ALONG EVACUATION ROUTE	9804044		Cleveland		2	8.92674	100	N
FUEL FACILITY - ALONG EVACUATION ROUTE	8502987		Grove City		2	9.56782	100	N
FUEL FACILITY - ALONG EVACUATION ROUTE	8631205		Grove City		2	9.12782	100	N
FUEL FACILITY - DOT	Port Charlotte Sub-Yard	23016 Harbor View Road	Port Charlotte		2	6.75897	100	N
HAZARDOUS MATERIALS FACILITY	GASPARILLA ISLAND WATER ASSOCIATION - SUB STATION	1700 EAST RAILROAD AVENUE	BOCA GRANDE	33921	1	3.75909	100	N
HAZARDOUS MATERIALS FACILITY	GASPARILLA ISLAND WATER ASSOCIATION - WWTP	EAST END OF 7 STREET	BOCA GRANDE	33921	T	2.66361	100	N
HAZARDOUS MATERIALS FACILITY	FLORIDA POWER AND LIGHT - BOCA GRANDE TERMINAL	850 BELCHER ROAD	BOCA GRANDE		2	5.87145	100	Y
HAZARDOUS MATERIALS FACILITY	GASPARILLA INN	5 STREET AND PALM AVENUE	BOCA GRANDE		T	0	100	N
HAZARDOUS MATERIALS FACILITY	LEE COUNTY MOSQUITO CONTROL - BOCA GRANDE HELISTOP	305 WHEELER ROAD	BOCA GRANDE		T	3.88425	100	N
HAZARDOUS MATERIALS FACILITY	MILLERS MARINA	220 HARBOR DRIVE	BOCA GRANDE	33921	2	4.93797	100	N
HAZARDOUS MATERIALS FACILITY	DEPARTMENT OF TRANSPORTATION - CHARLOTTE HARBOR	23016 HARBORVIEW ROAD	CHARLOTTE HARBOR	33980	2	7.35778	100	N
HAZARDOUS MATERIALS FACILITY	SUNOCO SERVICE STATION - CHARLOTTE HARBOR	4580 TAMIAMI TRAIL	CHARLOTTE HARBOR		2	6.61015	100	N
HAZARDOUS MATERIALS FACILITY	K MART - STORE 3590	1500 PLACIDA ROAD	ENGLEWOOD		2	6.68	100	N
HAZARDOUS MATERIALS FACILITY	ENGLEWOOD WATER DISTRICT - REVERSE OSMOSIS PLANT	201 SELMA AVENUE - NORTH SIDE OF ROAD	ENGLEWOOD	34223	2	11.03	500	Y
HAZARDOUS MATERIALS FACILITY	CHARLOTTE COUNTY UTILITIES - FIVELANDS STATION #5	6515 GASPARILLA PINES BOULEVARD	ENGLEWOOD	33955	1	6.17808	100	Y
HAZARDOUS MATERIALS FACILITY	VERIZON - ENGLEWOOD CO	89 SOUTH INDIANA AVENUE	ENGLEWOOD		2	10.17	500	Y

HAZARDOUS MATERIALS FACILITY	VERIZON - MANASOTA KEY RSU	2075 NORTH BEACH ROAD	ENGLEWOOD		T	4.17626	100	N
HAZARDOUS MATERIALS FACILITY	VERIZON - SPINNAKER R S U	3566 ACCESS ROAD	ENGLEWOOD		3	9.72	500	N
HAZARDOUS MATERIALS FACILITY	VERIZON - SUNNYBROOK R S U	4111 SOUTH MCCALL ROAD	ENGLEWOOD		3	13.7716	OUT	N
HAZARDOUS MATERIALS FACILITY	ENGLEWOOD COMMUNITY HOSPITAL	700 MEDICAL BOULEVARD	ENGLEWOOD		2	6.85	100	Y
HAZARDOUS MATERIALS FACILITY	SCHWAB READY MIX - PLACIDA PLANT	4500 LINWOOD ROAD	ENGLEWOOD		2	9.37079	100	N
HAZARDOUS MATERIALS FACILITY	TRI COUNTY TRUCKING OF SOUTHWEST FLORIDA	527 PAUL MORRIS DRIVE	ENGLEWOOD		2	9.02	500	Y
HAZARDOUS MATERIALS FACILITY	TRAVIS BOATING CENTER FLORIDA - ENGLEWOOD	900 SOUTH MCCALL ROAD	ENGLEWOOD		2	8.11	100	Y
HAZARDOUS MATERIALS FACILITY	CAPE HAZE MARINA BAY LLC	6950 PLACIDA ROAD	ENGLEWOOD	34224	1	5.205	100	N
HAZARDOUS MATERIALS FACILITY	NEW CINGULAR WIRELESS - ENGLEWOOD 15759	599 SOUTH INDIANA AVENUE	ENGLEWOOD		2	11.01	500	Y
HAZARDOUS MATERIALS FACILITY	UTILITIES INC OF FLORIDA - SANDALHAVEN	6811 PLACIDA ROAD	ENGLEWOOD		2	7.56363	100	N
HAZARDOUS MATERIALS FACILITY	STUMP PASS MARINA	260 MARYLAND AVENUE	ENGLEWOOD		2	8.16524	100	N
HAZARDOUS MATERIALS FACILITY	VERIZON - OAK GROVE R S U	1750 STATE ROAD 776	ENGLEWOOD		3	11.68	100	Y
HAZARDOUS MATERIALS FACILITY	ENGLEWOOD WATER DISTRICT - LIME PLANT	201 SELMA AVENUE - LIME PLANT	ENGLEWOOD		2	10.68	500	Y
HAZARDOUS MATERIALS FACILITY	ROYAL PALM MARINA	779 WEST WENTWORTH STREET	ENGLEWOOD		1	3.96	100	Y
HAZARDOUS MATERIALS FACILITY	CROWN CASTLE - ENGLEWOOD - 814697	599A SOUTH INDIANA AVENUE	ENGLEWOOD	34223	2	11.01	500	Y
HAZARDOUS MATERIALS FACILITY	MARBLE CONCEPTS	523 PAUL MORRIS DRIVE	ENGLEWOOD	34223	2	10.64	500	Y
HAZARDOUS MATERIALS FACILITY	SUNOCO SERVICE STATION - ENGLEWOOD	1680 MCCALL ROAD	ENGLEWOOD		2	6.85	100	N
HAZARDOUS MATERIALS FACILITY	WASTE MANAGEMENT - CHARLOTTE SANITATION	23046 HARBORVIEW ROAD	PORT CHARLOTTE		2	4.91437	100	N
HAZARDOUS MATERIALS FACILITY	FLORIDA ROCK INDUSTRIES - PORT CHARLOTTE	580 PRINEVILLE STREET	PORT CHARLOTTE	33954	2	12.3191	OUT	N
HAZARDOUS MATERIALS FACILITY	SAFETY KLEEN - PORT CHARLOTTE	19200 PEACHLAND BOULEVARD	PORT CHARLOTTE		3	19.4003	OUT	Y
HAZARDOUS MATERIALS FACILITY	EMBARQ - PORT CHARLOTTE CENTRAL OFFICE	3391 NORTH TAMiami TRAIL	PORT CHARLOTTE		2	9.51234	OUT	N

HAZARDOUS MATERIALS FACILITY	EMBARQ - MURDOCK CENTRAL OFFICE	18185 PAULSON DRIVE	PORT CHARLOTTE		2	11.7358	100	N
HAZARDOUS MATERIALS FACILITY	FAWCETT MEMORIAL HOSPITAL	21298 OLEAN BOULEVARD	PORT CHARLOTTE		2	8.56211	OUT	N
HAZARDOUS MATERIALS FACILITY	UNITED PARCEL SERVICE - PORT CHARLOTTE	4186 KINGS HIGHWAY	PORT CHARLOTTE		2	5.88682	100	N
HAZARDOUS MATERIALS FACILITY	SEARS ROEBUCK AUTO CENTER - 6335	1441 TAMIAMI TRAIL - TOWN SQUARE MALL	PORT CHARLOTTE		2	12.7424	OUT	N
HAZARDOUS MATERIALS FACILITY	WAL-MART - STORE 721	19100 MURDOCK CIRCLE	PORT CHARLOTTE		2	13.1735	OUT	N
HAZARDOUS MATERIALS FACILITY	SAMS CLUB - STORE 6445	17700 MURDOCK CIRCLE	PORT CHARLOTTE		2	12.0234	OUT	N
HAZARDOUS MATERIALS FACILITY	AMERIGAS PROPANE - PORT CHARLOTTE - TAMIAMI TRAIL	4151 SOUTH TAMIAMI TRAIL	PORT CHARLOTTE		2	7.60805	OUT	N
HAZARDOUS MATERIALS FACILITY	AMERIGAS PROPANE - PORT CHARLOTTE MARKET CIRCLE	1402 MARKET CIRCLE	PORT CHARLOTTE		2	8.13131	OUT	N
HAZARDOUS MATERIALS FACILITY	CHARLOTTE COUNTY UTILITIES - RAMPART WWTP	2200 KINGS HIGHWAY	PORT CHARLOTTE	33980	2	10.1597	OUT	Y
HAZARDOUS MATERIALS FACILITY	PAMECO - 668	18320 PAULSON DRIVE	PORT CHARLOTTE	33954	2	12.404	OUT	N
HAZARDOUS MATERIALS FACILITY	FLORIDA MARBLE OF CHARLOTTE COUNTY	23370 JANICE AVENUE	PORT CHARLOTTE	33980	2	6.54879	100	N
HAZARDOUS MATERIALS FACILITY	BON SECOURS - SAINT JOSEPH NURSING CENTER	2370 HARBOR BOULEVARD	PORT CHARLOTTE	33952	2	10.9407	OUT	N
HAZARDOUS MATERIALS FACILITY	CEMEX - PORT CHARLOTTE R/M AND BLOCK PLANT	19300 PEACHLAND BOULEVARD	PORT CHARLOTTE	33948	2	12.7806	100	N
HAZARDOUS MATERIALS FACILITY	HOME DEPOT USA - 0201	19690 TOLEDO BLADE BOULEVARD	PORT CHARLOTTE	33948	3	14.8116	OUT	N
HAZARDOUS MATERIALS FACILITY	AMERIGAS PROPANE - PUNTA GORDA	7251 UTILITY DRIVE	PUNTA GORDA		3	15.5686	OUT	Y
HAZARDOUS MATERIALS FACILITY	CHARLOTTE COUNTY UTILITIES - WEST PORT WWTP	15005 CATTLE DOCK POINT ROAD	PUNTA GORDA		T	3.49712	100	N
HAZARDOUS MATERIALS FACILITY	CHARLOTTE COUNTY UTILITIES - EAST PORT WWTP	3100 LOVELAND BOULEVARD	PUNTA GORDA		2	8.03489	OUT	Y
HAZARDOUS MATERIALS FACILITY	DEPARTMENT OF CORRECTIONS - CHARLOTTE CORRECTIONAL INST	33123 OIL WELL ROAD	PUNTA GORDA		5	24.266	U	N
HAZARDOUS MATERIALS FACILITY	ADVANTAGE TRANSPORTATION	13391 STATE ROAD 31	PUNTA GORDA	33982	4	23.6101	U	N
HAZARDOUS MATERIALS FACILITY	CITY OF PUNTA GORDA - WWTP	30999 BERMONT ROAD	PUNTA GORDA		4	21.7734	OUT	N
HAZARDOUS MATERIALS FACILITY	CITY OF PUNTA GORDA - WTP	38100 WASHINGTON	PUNTA GORDA		3	17.7348	OUT	N

MATERIALS FACILITY		LOOP						
HAZARDOUS MATERIALS FACILITY	K MART - STORE 3626	3941 TAMIAMI TRAIL - UNIT 1111	PUNTA GORDA		2	7.51787	100	Y
HAZARDOUS MATERIALS FACILITY	CHARLOTTE HARBOR WATER ASSOCIATION WTP	2515 HIGHLANDS ROAD	PUNTA GORDA		2	10.0675	OUT	Y
HAZARDOUS MATERIALS FACILITY	EAGLE ISLAND CITRUS		PUNTA GORDA	33950	NA	NA	OUT	N
HAZARDOUS MATERIALS FACILITY	BURDETTE COWARD AND COMPANY	17160 BURNT STORE ROAD	PUNTA GORDA	33955	3	13.2156	U	Y
HAZARDOUS MATERIALS FACILITY	CHARLOTTE COUNTY UTILITIES - BURNT STORE WWTP	17430 BURNT STORE ROAD	PUNTA GORDA		2	5.26193	U	Y
HAZARDOUS MATERIALS FACILITY	RINKER MATERIALS - CORAL ROCK	41451 COOK BROWN ROAD	PUNTA GORDA		5	33.2164	U	N
HAZARDOUS MATERIALS FACILITY	CITY OF PUNTA GORDA - MASTER PUMP STATION	900 WEST HENRY STATION	PUNTA GORDA		2	6.04996	100	N
HAZARDOUS MATERIALS FACILITY	EMBARQ - PUNTA GORDA CENTRAL OFFICE	113 WEST OLYMPIA AVENUE	PUNTA GORDA		T	4.20155	100	N
HAZARDOUS MATERIALS FACILITY	WATERMAN BROADCASTING - WBBH TV TRANSMITTER SITE	11011 STATE ROAD 31 NEAR TUCKERS CORNER	PUNTA GORDA		4	28.865	OUT	N
HAZARDOUS MATERIALS FACILITY	GATOR PETROLEUM	525 NESBIT STREET	PUNTA GORDA		1	5.22657	100	N
HAZARDOUS MATERIALS FACILITY	AJAX PAVING - PLANT 2	40851 COOK BROWN ROAD	PUNTA GORDA	33982	4	23.28	U	N
HAZARDOUS MATERIALS FACILITY	SCHWAB READY MIX - PUNTA GORDA PLANT	3333 ACLINE ROAD	PUNTA GORDA		3	14.1519	OUT	Y
HAZARDOUS MATERIALS FACILITY	BEN HILL GRIFFIN - C AND S GROVE	44991 FARABEE ROAD	PUNTA GORDA		NA	44.9187	OUT	N
HAZARDOUS MATERIALS FACILITY	CHARLOTTE COUNTY - AIRPORT AUTHORITY	7500 GOLF COURSE BOULEVARD	PUNTA GORDA		3	19.7139	OUT	N
HAZARDOUS MATERIALS FACILITY	TARMAC FLORIDA - PUNTA GORDA	US 41 SOUTH	PUNTA GORDA		T	3.1183	100	Y
HAZARDOUS MATERIALS FACILITY	BLUE GOOSE GROWERS - CALUSA GROVE	3990 CHIQUITA DRIVE ROAD	PUNTA GORDA		NA	NA	OUT	N
HAZARDOUS MATERIALS FACILITY	CHARLOTTE COUNTY - PUBLIC WORKS DEPARTMENT	7000 FLORIDA STREET	PUNTA GORDA		2	8.07575	100	N
HAZARDOUS MATERIALS FACILITY	CHARLOTTE COUNTY - MOSQUITO CONTROL	27221 BEECHCRAFT AVENUE	PUNTA GORDA		3	20.3818	OUT	N
HAZARDOUS MATERIALS FACILITY	CHARLOTTE COUNTY - MAINTENANCE OPERATIONS	925 KENILWORTH BOULEVARD	PUNTA GORDA		2	10.0844	OUT	N
HAZARDOUS MATERIALS FACILITY	CHARLOTTE COUNTY - ADMINISTRATIVE SERVICES	18500 MURDOCK CIRCLE	PUNTA GORDA		2	13.1735	OUT	N

HAZARDOUS MATERIALS FACILITY	CHARLOTTE COUNTY UTILITIES - LEACHATE TREATMENT PLANT	29751 ZEMEL ROAD	PUNTA GORDA		T	0.772319	100	Y
HAZARDOUS MATERIALS FACILITY	CHARLOTTE COUNTY UTILITIES - WATER BOOSTER STATION	17180 WALENDA AVENUE	PUNTA GORDA		2	11.7666	OUT	Y
HAZARDOUS MATERIALS FACILITY	CHARLOTTE COUNTY UTILITIES - GULF COVE WATER BOOSTER	4750 VAN LENTEN STREET	PUNTA GORDA		2	7.82672	100	Y
HAZARDOUS MATERIALS FACILITY	CHARLOTTE REGIONAL MEDICAL CENTER	809 EAST MARION AVENUE	PUNTA GORDA		T	3.21623	100	N
HAZARDOUS MATERIALS FACILITY	EMBARQ - DEEP CREEK CEV	433 RIO DE JANIERO	PUNTA GORDA		4	24.0168	OUT	Y
HAZARDOUS MATERIALS FACILITY	EMBARQ - KINGS HIGHWAY RLS	875 KINGS HIGHWAY	PUNTA GORDA		4	21.2463	OUT	N
HAZARDOUS MATERIALS FACILITY	FLORIDA ROCK INDUSTRIES - PUNTA GORDA R/M	2901 SOUTH COOPER STREET	PUNTA GORDA	33955	4	22.7859	U	N
HAZARDOUS MATERIALS FACILITY	CITY OF PUNTA GORDA - CENTRAL WAREHOUSE	975 WEST VIRGINIA AVENUE	PUNTA GORDA		T	1.2795	100	N
HAZARDOUS MATERIALS FACILITY	CITY OF PUNTA GORDA - BOOSTER PUMPING STATION	4300 HENRY STREET	PUNTA GORDA		1	4.67683	100	N
HAZARDOUS MATERIALS FACILITY	FERRELLGAS - PUNTA GORDA	3350 COOPER STREET	PUNTA GORDA		T	3.70165	100	Y
HAZARDOUS MATERIALS FACILITY	FRANK CARROLL OIL COMPANY - MARTI MART 4	14369 PAMBAR ROAD	PUNTA GORDA		T	2.71487	100	Y
HAZARDOUS MATERIALS FACILITY	HUDSON TECHNOLOGIES	5474 WILLIAMSBURG DRIVE	PUNTA GORDA		2	6.66327	100	N
HAZARDOUS MATERIALS FACILITY	RIVERWOOD WASTEWATER TREATMENT PLANT	4100 RIVERWOOD DRIVE	PUNTA GORDA		2	8.64736	100	Y
HAZARDOUS MATERIALS FACILITY	CEMEX - PUNTA GORDA R/M	3433 ACLINE ROAD	PUNTA GORDA		3	14.421	OUT	N
HAZARDOUS MATERIALS FACILITY	BLUE GOOSE GROWERS - SHELL CREEK GROVE	35001 TRAILS END DRIVE	PUNTA GORDA		3	22.4903	OUT	N
HAZARDOUS MATERIALS FACILITY	QWEST - PUNTA GORDA AMP	12150 TRIBUNE BOULEVARD	PUNTA GORDA	33955	4	23.6888	U	Y
HAZARDOUS MATERIALS FACILITY	BETTER ROADS - BADCOCK	13490 HIGHWAY 31	PUNTA GORDA		4	20.136	U	Y
HAZARDOUS MATERIALS FACILITY	MIAMI VALLEY CONCRETE - PUNTA GORDA	8145 GOLF COURSE BOULEVARD	PUNTA GORDA	33950	3	17.4183	100	N
HAZARDOUS MATERIALS FACILITY	NEW CINGULAR WIRELESS - OIL WELL 16284	31227 OIL WELL ROAD	PUNTA GORDA	33955	4	22.6967	U	Y
HAZARDOUS MATERIALS FACILITY	SCHWANS SALES ENTERPRISES - PUNTA GORDA	3121 COOPER STREET	PUNTA GORDA	33950	T	1.78773	100	N
HAZARDOUS MATERIALS FACILITY	PILOT TRAVEL CENTER - 094	26505 JONES LOOP ROAD	PUNTA GORDA	33950	4	19.8271	OUT	N

HAZARDOUS MATERIALS FACILITY	D M CONSTRUCTION	3801 EAST HENRY STREET	PUNTA GORDA		2	10.5963	OUT	N
HAZARDOUS MATERIALS FACILITY	SUNLAND PAVING	4201 EAST HENRY STREET	PUNTA GORDA		2	12.4602	OUT	N
HAZARDOUS MATERIALS FACILITY	CHARLOTTE COUNTY - AIRPORT	27245 BEECHCRAFT AVENUE	PUNTA GORDA	33982	4	22.1799	100	N
HAZARDOUS MATERIALS FACILITY	HOME DEPOT USA - 6950	3941 TAMIAMI TRAIL	PUNTA GORDA	33950	2	3.42991	100	Y
HAZARDOUS MATERIALS FACILITY	LIFE CARE CENTERS OF AMERICA - PUNTA GORDA	450 SHREVE STREET	PUNTA GORDA		2	7.81182	100	N
HAZARDOUS MATERIALS FACILITY	CHARLOTTE COUNTY UTILITIES - ROTONDA WWTP	3740 KENDALL ROAD	ROTONDA WEST		2	5.3114	100	Y
HAZARDOUS MATERIALS FACILITY	BRUNSWICK - MERCURY MARINE---2325	12580 PLACIDA ROAD	PLACIDA		T	0	100	Y
HAZARDOUS MATERIALS FACILITY	GASPARILLA ISLAND WATER ASSOCIATION - RO AND WT PLANTS	5050 LINWOOD ROAD	PLACIDA		2	7.78328	100	N
HAZARDOUS MATERIALS FACILITY	BIG GALLIRAPSA CORPORATION	13010 FISHERY ROAD	PLACIDA	33946	1	4.69124	100	Y
HAZARDOUS MATERIALS FACILITY	ENGLEWOOD WATER DISTRICT - WWTP	140 TALMEN ROAD	PLACIDA		2	8.70078	100	N
HAZARDOUS MATERIALS FACILITY	GASPARILLA MARINA	15001 GASPARILLA ROAD	PLACIDA		1	4.52404	100	N
HAZARDOUS MATERIALS FACILITY	MIAMI VALLEY CONCRETE - PLACIDA	5250 WOOD FIELD DRIVE	PLACIDA	33946	T	3.30773	100	Y
HAZARDOUS MATERIALS FACILITY	CHARLOTTE COUNTY UTILITIES - ROTONDA WEST UTILITY PUMP	ROTONDA BOULEVARD WEST	PLACIDA		2	5.02773	100	Y
HAZARDOUS MATERIALS FACILITY	CHARLOTTE COUNTY UTILITIES - ROTONDA REVERSE OSMOSIS WP	3560 HIATIAN ROAD	PLACIDA		2	6.57459	100	Y
HAZARDOUS MATERIALS FACILITY	K MART - STORE 4886	19400 TOLEDO BLADE ROAD	MURDOCK		2	12.8006	OUT	N
HAZARDOUS MATERIALS FACILITY	GEMAIRE - MURDOCK	18230-A PAULSON DRIVE	MURDOCK		3	15.6261	OUT	N
HAZARDOUS MATERIALS FACILITY	KNIGHT ISLAND UTILITIES	7092 PLACIDA ROAD	CAPE HAZE	33946	1	4.19026	100	Y
HAZARDOUS MATERIALS FACILITY	SPRINT COMMUNICATIONS - CAPE HAZE CENTRAL OFFICE	365 ROTONDA CIRCLE - BUNKER ROAD	CAPE HAZE		2	5.92033	100	N
HAZARDOUS MATERIALS FACILITY	PALM ISLAND MARINA	7080 PLACIDA ROAD	CAPE HAZE		1	6.01696	100	N
HAZARDOUS	MARINA AT CAPE HAZE	6950 PLACIDA ROAD	CAPE HAZE	34224	3	14.969	OUT	Y

MATERIALS FACILITY								
HAZARDOUS MATERIALS FACILITY	AMERIGAS PROPANE - EL JOBEAN	LONGWOOD DRIVE	EL JOBEAN		T	3.1183	100	Y
HELIPORT/HELIPAD	BOCA GRANDE HELISTOP		BOCA GRANDE		1	4.17323	100	N
HELIPORT/HELIPAD	ST. JOSEPH HOSPITAL		PORT CHARLOTTE		2	13.0573	OUT	N
LAW ENFORCEMENT	CHARLOTTE COUNTY SHERIFF'S DEPT. DIST. 1	6868 SAN CASA DR	ENGLEWOOD	34224	4	17.7586	OUT	N
LAW ENFORCEMENT	SARASOTA COUNTY SHERIFF ENGLEWOOD STATION	101 N ORANGE ST	ENGLEWOOD	34223	2	10.86	500	Y
LAW ENFORCEMENT	CHARLOTTE COUNTY SHERIFF'S DEPT. DIST. 4	3280 TAMIAMI TRL STE 1	PORT CHARLOTTE	33952	2	8.46079	OUT	N
LAW ENFORCEMENT	CHARLOTTE COUNTY SHERIFF'S DEPT. DIST.2	989 TAMIAMI TRL # B	PORT CHARLOTTE	33953	2	13.0468	OUT	N
LAW ENFORCEMENT	CHARLOTTE COUNTY SHERIFF'S DEPT. HEADQUARTERS	7474 UTILITIES RD	PUNTA GORDA	33982	3	17.3844	OUT	N
LAW ENFORCEMENT	PUNTA GORDA POLICE DEPT HEADQUARTERS	1410 S TAMIAMI TRL	PUNTA GORDA	33950	2	7.63034	100	N
LAW ENFORCEMENT	CHARLOTTE COUNTY SHERIFF'S DEPT. TAC UNIT	7474 UTILITIES RD	PUNTA GORDA	33982	3	17.3899	OUT	N
LIBRARY	Johann First Community Library	1040 W 10TH ST	BOCA GRANDE	33921	2	5.63824	100	N
LIBRARY	County of Charlotte	3450 N ACCESS RD	ENGLEWOOD	34224	2	10.18	OUT	N
LIBRARY	Friends of Elise Quirk Lbry	100 W DEARBORN ST	ENGLEWOOD	34223	3	10.78	500	Y
LIBRARY	County of Charlotte	18400 MURDOCK CIR	PORT CHARLOTTE	33948	2	11.6146	OUT	N
LIBRARY	Friends of Murdock Public Lib	18400 MURDOCK CIR	PORT CHARLOTTE	33948	2	12.273	OUT	N
LIBRARY	Maintenance Branch Inc	2195B TAMIAMI TRL	PORT CHARLOTTE	33948	2	9.54978	OUT	N
LIBRARY	County of Charlotte	2280 AARON ST	PORT CHARLOTTE	33952	2	10.3981	OUT	N
LIBRARY	Friends of Port Charl	2280 AARON ST	PORT CHARLOTTE	33952	2	10.3981	OUT	N
LIBRARY	City of Punta Gorda	424 W HENRY ST	PUNTA GORDA	33950	T	2.70846	100	N
LOCAL GOVERNMENT FACILITY	CHARLOTTE COUNTY JUSTICE CENTER	350 E. MARION AVENUE		33951	1	4.33892	100	N
LOGISTICAL STAGING AREA	Rangers Sports Stadium	2300 El Jobean Road	Port Charlotte		2	9.93423	OUT	Y
LOGISTICAL STAGING AREA	Charlotte County Airport	28000 Airport Road, A-1	Punta Gorda		4	20.8056	OUT	N
MAJOR INTERSECTION	US 41 AND COUNTY 769		PORT CHARLOTTE		T	-1.36995	OPEN WATER	N
MAJOR INTERSECTION	I-75 AND US 17/STATE 35		PUNTA GORDA		2	11.0693	100	N
POINT OF DISTRIBUTION	JAB Shopping Center	4200 Tamiami Trail	Charlotte Harb	0	2	6.29173	100	N
POINT OF	Walmart Plaza	3811 Tamiami Trail	Punta Gorda	33950	1	5.5006	100	N

DISTRIBUTION								
POINT OF DISTRIBUTION	Charlotte County Auditorium	75 Taylor Street	Punta Gorda	33950	1	6.54361	100	N
POINT OF DISTRIBUTION	Rotonda Plaza	5855 Placida Road	Placida	0	2	9.28358	OUT	N
POINT OF DISTRIBUTION	Town Center Mall	1441 Tamiami Trail	Murdock	33948	3	14.0867	OUT	N
POINT OF DISTRIBUTION	Gulf Cove Publix Shopping Cent	13435 South McCall Road	Gulf Cove	0	2	7.08294	100	N
PUBLIC SCHOOL	PEACE RIVER ELEMENTARY SCHOOL	22400 NW HANCOCK AVE	CHARLOTTE HARBOR	33980	2	7.11807	100	N
PUBLIC SCHOOL	LEMON BAY HIGH SCHOOL	2201 PLACIDA RD	ENGLEWOOD	34224	2	6.62726	100	N
PUBLIC SCHOOL	ENGLEWOOD ELEMENTARY SCHOOL	150 N MCCALL RD	ENGLEWOOD	34223	3	11.66	500	Y
PUBLIC SCHOOL	SCHOOL AND COMMUNITY RELATIONS	1441 TAMIAMI TRAIL SUITE 845	PORT CHARLOTTE	33948	3	14.2525	OUT	N
PUBLIC SCHOOL	CHARLOTTE HARBOR SCHOOL	22450 HANCOCK AVE	PORT CHARLOTTE	33980	2	9.0881	100	N
PUBLIC SCHOOL	NEIL ARMSTRONG ELEMENTARY SCHOOL	22100 BREEZESWEPT AVE	PORT CHARLOTTE	33952	3	13.6847	OUT	N
PUBLIC SCHOOL	PORT CHARLOTTE MIDDLE SCHOOL	23000 MIDWAY BLVD	PORT CHARLOTTE	33952	3	15.4249	OUT	N
PUBLIC SCHOOL	MEADOW PARK ELEMENTARY SCHOOL	3131 LAKE VIEW BLVD	PORT CHARLOTTE	33948	2	8.69019	100	N
PUBLIC SCHOOL	PORT CHARLOTTE HIGH SCHOOL	18200 TOLEDO BLADE BLVD	PORT CHARLOTTE	33948	2	11.7583	OUT	N
PUBLIC SCHOOL	CHARLOTTE TECHNICAL CENTER	18300 TOLEDO BLADE BLVD	PORT CHARLOTTE	33948	2	11.2814	OUT	N
PUBLIC SCHOOL	LIBERTY ELEMENTARY SCHOOL	370 ATWATER ST	PORT CHARLOTTE	33954	3	17.0357	OUT	N
PUBLIC SCHOOL	MURDOCK MIDDLE SCHOOL	17325 MARINER WAY	PORT CHARLOTTE	33948	2	11.1659	OUT	N
PUBLIC SCHOOL	MYAKKA RIVER ELEMENTARY SCHOOL	12650 WILLMINGTON BLVD	PORT CHARLOTTE	33981	3	11.3366	OUT	Y
PUBLIC SCHOOL	KINGSWAY ELEMENTARY SCHOOL	23300 QUASAR BLVD	PORT CHARLOTTE	33980	4	23.5537	OUT	N
PUBLIC SCHOOL	CHARLOTTE COUNTY JAIL	1445 EDUCATION WAY	PORT CHARLOTTE	33948	2	13.1655	OUT	N
PUBLIC SCHOOL	CHARLOTTE COUNTY SUPERINTENDENT'S OFFICE	1445 EDUCATION WAY	PORT CHARLOTTE	33948	2	12.3083	OUT	N
PUBLIC SCHOOL	MIGRANT NON-ENROLLED STUDENTS	1445 EDUCATION WAY	PORT CHARLOTTE	33948	2	12.3083	OUT	N
PUBLIC SCHOOL	DEEP CREEK ELEMENTARY SCHOOL	26900 HARBORVIEW ROAD	PT CHARLOTTE	33983	2	10.3714	OUT	N
PUBLIC SCHOOL	SALLIE JONES ELEMENTARY	1230 NARRANJA ST	PUNTA GORDA	33950	2	6.6601	100	N

	SCHOOL							
PUBLIC SCHOOL	CHARLOTTE HIGH SCHOOL	1250 COOPER ST	PUNTA GORDA	33950	2	6.58508	100	N
PUBLIC SCHOOL	BAKER/HEAD START	311 E CHARLOTTE AVE	PUNTA GORDA	33950	2	5.96246	100	N
PUBLIC SCHOOL	EAST ELEMENTARY SCHOOL	27050 FAIRWAY DR	PUNTA GORDA	33982	2	10.2641	OUT	N
PUBLIC SCHOOL	PUNTA GORDA MIDDLE SCHOOL	825 CARMALITA ST	PUNTA GORDA	33950	2	7.65906	100	N
PUBLIC SCHOOL	KELLY HALL	2208 CASTILLA AVE	PUNTA GORDA	33950	2	6.57081	100	N
PUBLIC SCHOOL	CROSSROADS WILDERNESS INSTITUTE	45991 BERMONT ROAD	PUNTA GORDA	33982	NA	53.4003	OUT	Y
PUBLIC SCHOOL	L. A. AINGER MIDDLE SCHOOL	245 COUGAR WAY	ROTONDA WEST	33947	3	12.2416	OUT	N
PUBLIC SCHOOL	VINELAND ELEMENTARY SCHOOL	467 BOUNDARY BLVD	ROTONDA WEST	33947	3	13.3686	OUT	N
PUBLIC WATER SUPPLY	GASPARILLA ISLAND WATER ASSOC	PO BOX 310	BOCA GRANDE	33921	2	7.13086	100	N
PUBLIC WATER SUPPLY	CAYO COSTA STATE PARK	P.O. BOX 1150	BOCA GRANDE	33921	2	4.64511	100	N
PUBLIC WATER SUPPLY	BOCILLA UTILITIES, INC.	7025 PLACIDA ROAD STE A	ENGLEWOOD	34224	T	1.84426	100	N
PUBLIC WATER SUPPLY	BOCILLA UTILITIES, INC.	7025 PLACIDA ROAD STE A	ENGLEWOOD	34224	1	5.1852	100	N
PUBLIC WATER SUPPLY	ENGLEWOOD WATER DIST	201 SELMA AVE	ENGLEWOOD	34223	3	15.3	OUT	Y
PUBLIC WATER SUPPLY	ENGLEWOOD WATER DIST	201 SELMA AVE	ENGLEWOOD	34223	2	10.6	500	Y
PUBLIC WATER SUPPLY	ENGLEWOOD COIN LAUNDRY	100 S. INDIANA AVE	ENGLEWOOD	34223	3	11.55	500	Y
PUBLIC WATER SUPPLY	MYAKKA PINES GOLF RED COMFORT STATION	P O BOX 126 (2550 S. RIVER RD)	ENGLEWOOD	34295	3	12.57	500	N
PUBLIC WATER SUPPLY	MYAKKA PINES GOLF CLUB RESTAURANT	2550 S. RIVER ROAD, ENGLEWOOD, FL. 34223	ENGLEWOOD	34223	3	12.85	500	N
PUBLIC WATER SUPPLY	UNITY CHURCH OF PEACE	2250 RUTLEDGE ST	PORT CHARLOTTE	34287	3	23.12	OUT	N
PUBLIC WATER SUPPLY	MURDOCK TRANSPORTATION FACILITY	17490 ABBOTT AVE	PORT CHARLOTTE	33948	2	11.0786	OUT	N
PUBLIC WATER SUPPLY	ALLIGATOR PARK	6400 TAYLOR ROAD	PUNTA GORDA	33950	3	19.4628	OUT	Y
PUBLIC WATER SUPPLY	17 LOUNGE	3149 DUNCAN ROAD	PUNTA GORDA	33982	2	9.38162	OUT	Y
PUBLIC WATER SUPPLY	PELICAN PERCH RV PARK	11255 TAMIAMI TRAIL	PUNTA GORDA	33955	4	21.7595	U	Y
PUBLIC WATER	PEACE RIVER FISH CAMP	29208 SNOOK CIRCLE	PUNTA GORDA	33982	2	11.5821	OUT	Y

SUPPLY								
PUBLIC WATER SUPPLY	SHELL CREEK PARK	35711 WASHINGTON LOOP ROAD	PUNTA GORDA	33982	3	15.8927	OUT	N
PUBLIC WATER SUPPLY	CURLEY'S CORNER	12120 TAMIAMI TRAIL	PUNTA GORDA	33955	4	25.7529	U	Y
PUBLIC WATER SUPPLY	SUN N SHADE FAMILY CAMPGROUND	14880 TAMIAMI TRAIL	PUNTA GORDA	33955	5	24.8705	OUT	N
PUBLIC WATER SUPPLY	CHARLOTTE COUNTY UTILITIES/BURNT STORE	17430 BURNT STORE ROAD	PUNTA GORDA	33955	3	12.9905	U	Y
PUBLIC WATER SUPPLY	CHARLOTTE COUNTY UTILITIES/BURNT STORE	17430 BURNT STORE ROAD	PUNTA GORDA	33955	2	13.001	U	Y
PUBLIC WATER SUPPLY	TROPICAL PALMS MHP	17100 N. TAMIAMI TRAIL	PUNTA GORDA	33955	4	22.1936	U	Y
PUBLIC WATER SUPPLY	CIRCLE K #7409	11161 US 41	PUNTA GORDA	33950	4	21.699	U	Y
PUBLIC WATER SUPPLY	USA GROCERS	2390 DUNCAN ROAD	PUNTA GORDA	33982	2	12.4626	OUT	Y
PUBLIC WATER SUPPLY	PARADISE PARK CONDO. ASSOC.	46900 STATE ROAD 74	PUNTA GORDA	33982	NA	58.1736	OUT	Y
PUBLIC WATER SUPPLY	SUN RIVER UTILITIES, INC	WOOD DUCK DRIVE	PUNTA GORDA	33982	2	12.7988	OUT	Y
PUBLIC WATER SUPPLY	I-75 WEIGH STATION	TUCKERS GRADE	PUNTA GORDA	33903	4	22.5979	OUT	Y
PUBLIC WATER SUPPLY	CROSSROADS WILDERNESS INSTITUTE	45991 BERMONT RD.	PUNTA GORDA	33982	NA	52.3684	OUT	N
PUBLIC WATER SUPPLY	CHARLOTTE CORRECTIONAL INSTITUTION	33123 OIL WELL ROAD	PUNTA GORDA	33955	5	27.3841	U	N
PUBLIC WATER SUPPLY	CHARLOTTE CORRECTIONAL INSTITUTION	33123 OIL WELL ROAD	PUNTA GORDA	33955	4	25.7319	U	N
PUBLIC WATER SUPPLY	FIRST BAPTIST CHURCH OF CLEVELAND	6600 CLEVELAND DR	PUNTA GORDA	33982	2	12.8614	OUT	Y
PUBLIC WATER SUPPLY	BABCOCK WILDERNESS ADVENTURES	8000 SR 31	PUNTA GORDA	33982	NA	NA	U	N
PUBLIC WATER SUPPLY	PUNTA GORDA, CITY OF	38100 WASHINGTON LOOP ROAD	PUNTA GORDA	33982	3	17.3428	OUT	N
PUBLIC WATER SUPPLY	PRICE-SANDERS SCOUT RESERVATON	38751 BERMONT ROAD	PUNTA GORDA	33982	NA	39.5653	OUT	N
PUBLIC WATER SUPPLY	PUNTA GORDA, CITY OF		PUNTA GORDA	0	2	10	100	N
PUBLIC WATER SUPPLY	CHARLOTTE HARBOR WATER ASSN.	2515 HIGHLANDS ROAD	HARBOUR HEIGHTS	33983	2	10.862	OUT	N
PUBLIC WATER	CHARLOTTE HARBOR WATER	2515 HIGHLANDS ROAD	HARBOUR	33983	3	15.2843	OUT	N

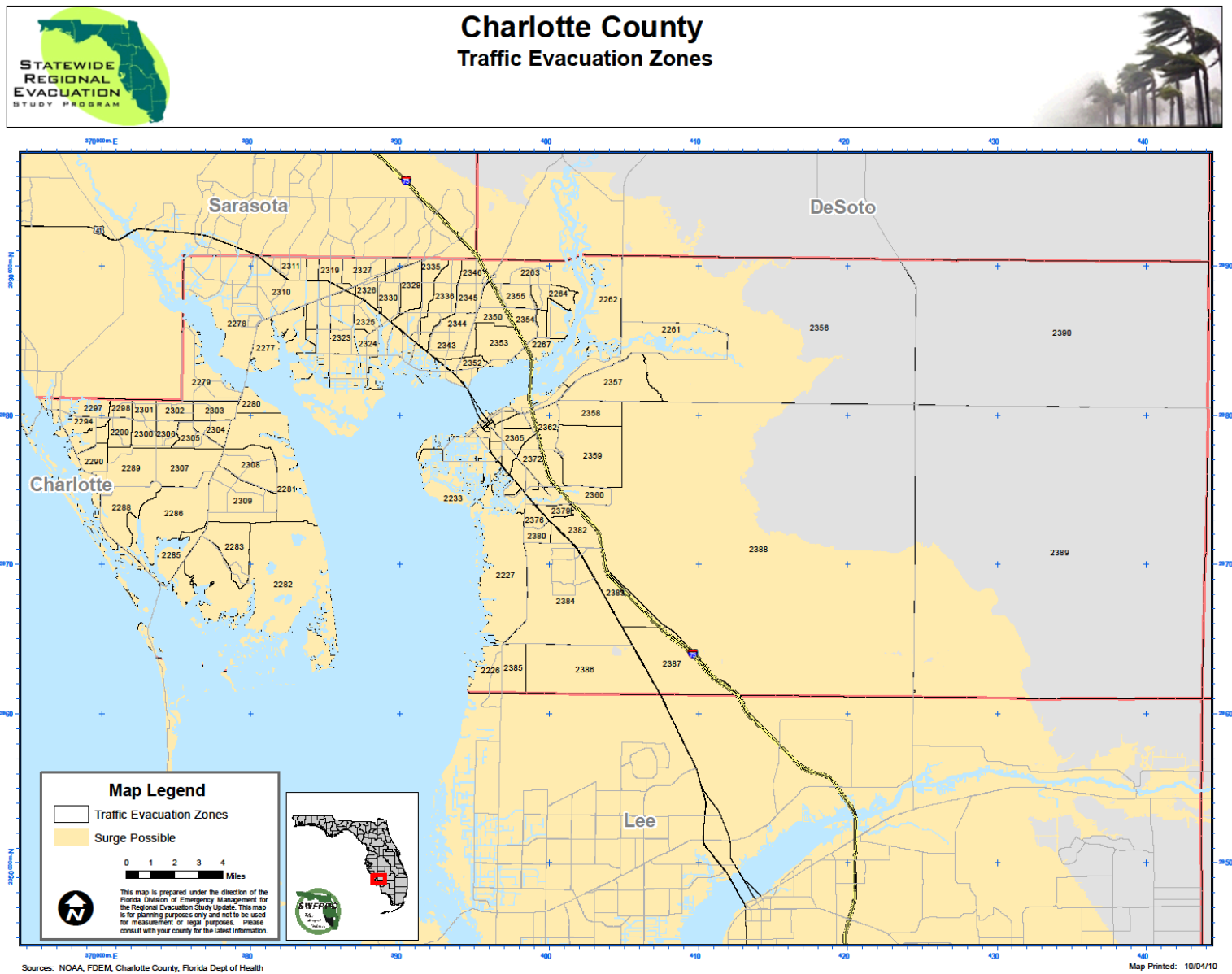
SUPPLY	ASSN.		HEIGHTS					
PUBLIC WATER SUPPLY	KNIGHT ISLAND UTILITIES, INC.	7092 PLACIDA ROAD	CAPE HAZE	33946	T	1.66514	100	N
PUBLIC WATER SUPPLY	LITTLE GASPARILLA UTILITY INC	P.O. BOX 5145	GROVE CITY	34224	T	3.65478	100	N
RADIO COMMUNICATIONS TOWER	WIKX		CHARLOTTE HARBOR		2	7.02982	100	N
RADIO COMMUNICATIONS TOWER	WSEB		ENGLEWOOD		T	3.59732	100	Y
RADIO COMMUNICATIONS TOWER	WTZB		ENGLEWOOD		3	12.38	500	Y
RADIO COMMUNICATIONS TOWER	WVIJ		PORT CHARLOTTE		2	10.9446	OUT	N
RADIO COMMUNICATIONS TOWER	W265BH		PORT CHARLOTTE		2	10.9446	OUT	N
RADIO COMMUNICATIONS TOWER	WCKT		PORT CHARLOTTE		4	27.3416	U	N
RADIO COMMUNICATIONS TOWER	WCCF		PUNTA GORDA		T	1.20121	100	Y
RADIO COMMUNICATIONS TOWER	W250AM		PUNTA GORDA		1	5.21104	100	N
RADIO COMMUNICATIONS TOWER	WKII		SOLANA		2	6.86838	100	Y
RADIO COMMUNICATIONS TOWER	WCVU		SOLANA		T	1.20121	100	Y
RADIO COMMUNICATIONS TOWER	W298AV		HARBOUR HEIGHTS		2	13.3693	OUT	Y
RADIO COMMUNICATIONS TOWER	WBCG		MURDOCK		2	8.34825	100	Y
RADIO	W247AQ		TROPICAL GULF		4	21.9622	U	Y

COMMUNICATIONS TOWER			ACRES					
RELIEF AGENCY	CHARLOTTE COUNTY RED CROSS CHAPTER	1300 ENTERPRISE DR STE 10	PORT CHARLOTTE	33953	2	10.9856	OUT	N
SOLID WASTE FACILITY	BOCA GRAND DUMP	4 MI SO OF PLACID ON GASPARILLA ISLAND	BOCA GRAND	0	T	3.69589	100	N
SOLID WASTE FACILITY	TRACT 1 LEMON BAY GROVES	LINWOOD RD, 3MI SSW SR771 & 776	CHARLOTTE BEACH	33981	3	17.9841	100	N
SOLID WASTE FACILITY	CHARLOTTE CTY. MURDOCK TRANSFER STA	KENILWORTH BLVD. & THERESA BLV	CHARLOTTE COUNTY	33954	3	14.7301	OUT	N
SOLID WASTE FACILITY	CHARLOTTE COUNTY LF #2	2MI NE CHARLOTTE HARBOR	CHARLOTTE HARBOR	33980	2	10.0777	OUT	Y
SOLID WASTE FACILITY	EAST CHARLOTTE TRANS STATION	23046 HARBORVIEW ROAD	CHARLOTTE HARBOR	33980	2	4.98788	100	N
SOLID WASTE FACILITY	RAULERSON YARD TRASH COMPOST SITE	ROWLAND DRIVE	PUNTA GORDA	33980	5	30.5	100	Y
SOLID WASTE FACILITY	RAULERSON C & D FACILITY	189 ROWLAND DRIVE	PUNTA GORDA	33980	5	30.5	100	Y
SOLID WASTE FACILITY	SLD-RECYCLING & DISPOSAL FACILITY	30301 ZEMEL ROAD	PUNTA GORDA	33955	4	20.7403	U	N
SOLID WASTE FACILITY	CHARLOTTE COUNTY LF #1	1MI S JCT US17 & SR74	PUNTA GORDA	33982	3	16.3374	OUT	N
SOLID WASTE FACILITY	3G'S RECYCLING RESOURCES	COOPER STREET (OFF. US41)	PUNTA GORDA	33950	T	3.05842	100	Y
SOLID WASTE FACILITY	HAYMANS C & D FACILITY	9100 BURNT STORE RD	PUNTA GORDA	33950	2	4.22716	100	N
SOLID WASTE FACILITY	TREWORGY/LAISHLEY C & D FACILITY	N JONES LOOP RD, 1.75MI E I-75	PUNTA GORDA	33982	4	10.9059	500	N
SOLID WASTE FACILITY	SOUTHWEST LAND DEVELOPERS TRANS STA	27595 JONES LOOP RD	PUNTA GORDA	33950	4	23.4713	100	N
SOLID WASTE FACILITY	SLACK EXCAVATING C & D FACILITY	28100 N. JONES LOOP RD.	PUNTA GORDA	33982	4	24.1737	OUT	N
SOLID WASTE FACILITY	GOMEZ PROPERTY C & D FACILITY	ASPEN RD	PUNTA GORDA	0	T	1.66233	100	N
SOLID WASTE FACILITY	SOUTHWEST LAND DEVELOPERS INC	30001 ZEMEL RD	PUNTA GORDA	33955	NA	105.57	U	N
SOLID WASTE FACILITY	KUSKY RECYCLING CENTER	LINWOOD RD	ROTONDA WEST	33981	2	7.07219	100	N
SOLID WASTE FACILITY	WEST CHARLOTTE TRANSFER STATION AKA ENGLEWOOD	5175 REDWOOD RD	PLACIDA	33947	2	8.34695	100	N
SOLID WASTE FACILITY	CHARLOTTE COUNTY LF #3	6MI NE PLACIDA OFF SR771	PLACIDA	33946	1	5.02794	100	N

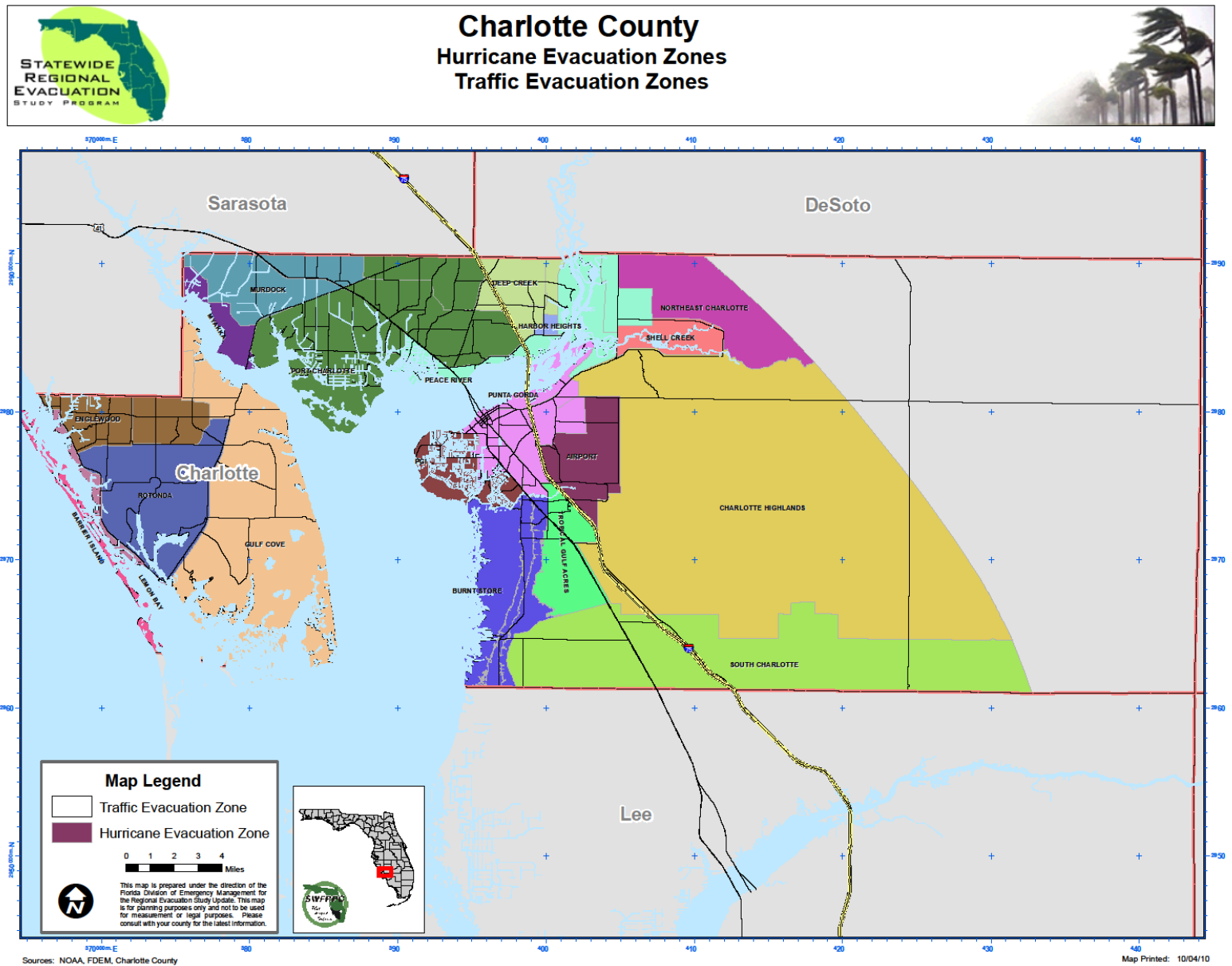
SOLID WASTE FACILITY	CHARLOTTE COUNTY SLF (ZEMEL RD LF)	ZEMEL RD, W US41	TROPICAL GULF ACRES	33955	NA	66.7642	U	N
STATE GOVERNMENT FACILITY	LIGHTHOUSE	880 BELCHER ROAD	BOCA GRANDE	33921	1	4.5036	100	Y
STATE GOVERNMENT FACILITY	PARK MANAGER RESIDENCE	431 LAFITE ROAD	BOCA GRANDE	33921	1	4.75965	100	N
STATE GOVERNMENT FACILITY	VETERANS NURSING HOME	21261 GRAYTON TERRACE	PORT CHARLOTTE	0	3	19.4409	OUT	N
STATE GOVERNMENT FACILITY	ADMINISTRATION	33123 OIL WELL ROAD	PUNTA GORDA	33955	4	23.4468	U	N
STATE GOVERNMENT FACILITY	BOQ	33123 OIL WELL ROAD	PUNTA GORDA	33955	4	23.4468	U	N
STATE GOVERNMENT FACILITY	CHAPEL	33123 OIL WELL ROAD	PUNTA GORDA	33955	4	23.4468	U	N
STATE GOVERNMENT FACILITY	DORM A	33123 OIL WELL ROAD	PUNTA GORDA	33955	4	23.4468	U	N
STATE GOVERNMENT FACILITY	DORM B	33123 OIL WELL ROAD	PUNTA GORDA	33955	4	23.4468	U	N
STATE GOVERNMENT FACILITY	DORM C / CSU / TCU	33123 OIL WELL ROAD	PUNTA GORDA	33955	4	23.4468	U	N
STATE GOVERNMENT FACILITY	DORM D	33123 OIL WELL ROAD	PUNTA GORDA	33955	4	23.4468	U	N
STATE GOVERNMENT FACILITY	DORM E	33123 OIL WELL ROAD	PUNTA GORDA	33955	4	23.4468	U	N
STATE GOVERNMENT FACILITY	DORM F	33123 OIL WELL ROAD	PUNTA GORDA	33955	4	23.4468	U	N
STATE GOVERNMENT FACILITY	DORM G	33123 OIL WELL ROAD	PUNTA GORDA	33955	4	23.4468	U	N
STATE GOVERNMENT FACILITY	DUPLEX	33123 OIL WELL ROAD	PUNTA GORDA	33955	4	23.4468	U	N
STATE GOVERNMENT FACILITY	DUPLEX NEW	33123 OIL WELL ROAD	PUNTA GORDA	33955	4	23.4468	U	N
STATE GOVERNMENT FACILITY	EDUCATION	33123 OIL WELL ROAD	PUNTA GORDA	33955	4	23.4468	U	N
STATE GOVERNMENT FACILITY	EQUIP STORAGE	33123 OIL WELL ROAD	PUNTA GORDA	33955	4	23.4468	U	N
STATE GOVERNMENT FACILITY	FOOD SERVICE / LAUNDRY	33123 OIL WELL ROAD	PUNTA GORDA	33955	4	23.4468	U	N
STATE GOVERNMENT FACILITY	GENERATOR 3	33123 OIL WELL ROAD	PUNTA GORDA	33955	4	23.4468	U	N
STATE GOVERNMENT FACILITY	GENERATOR NORTH 1	33123 OIL WELL ROAD	PUNTA GORDA	33955	4	23.4468	U	N

STATE GOVERNMENT FACILITY	GENERATOR SOUTH 2	33123 OIL WELL ROAD	PUNTA GORDA	33955	4	23.4468	U	N
STATE GOVERNMENT FACILITY	HORSE STABLES	29200 TRUCKERS GRADE ROAD	PUNTA GORDA	33955	4	19.0976	U	N
STATE GOVERNMENT FACILITY	HOUSING SUPPORT / EAST	33123 OIL WELL ROAD	PUNTA GORDA	33955	4	23.4468	U	N
STATE GOVERNMENT FACILITY	HOUSING SUPPORT / WEST	33123 OIL WELL ROAD	PUNTA GORDA	33955	4	23.4468	U	N
STATE GOVERNMENT FACILITY	I-75 REST AREA / EXIT 136	I-75 REST AREA - EXIT 136	PUNTA GORDA	0	1	5.85389	100	N
STATE GOVERNMENT FACILITY	INMATE ACTIVITIES	33123 OIL WELL ROAD	PUNTA GORDA	33955	4	23.4468	U	N
STATE GOVERNMENT FACILITY	MAINT	33123 OIL WELL ROAD	PUNTA GORDA	33955	4	23.4468	U	N
STATE GOVERNMENT FACILITY	MENTAL HEALTH	33123 OIL WELL ROAD	PUNTA GORDA	33955	4	23.4468	U	N
STATE GOVERNMENT FACILITY	MULTI-PURPOSE	33123 OIL WELL ROAD	PUNTA GORDA	33955	4	23.4468	U	N
STATE GOVERNMENT FACILITY	RECREATION	33123 OIL WELL ROAD	PUNTA GORDA	33955	4	23.4468	U	N
STATE GOVERNMENT FACILITY	SEWER TREATMENT PLANT	33123 OIL WELL ROAD	PUNTA GORDA	33955	4	23.4468	U	N
STATE GOVERNMENT FACILITY	SUPER'S RESIDENCE	33123 OIL WELL ROAD	PUNTA GORDA	33955	4	23.4468	U	N
STATE GOVERNMENT FACILITY	VISITOR CONTROL	33123 OIL WELL ROAD	PUNTA GORDA	33955	4	23.4468	U	N
STATE GOVERNMENT FACILITY	VISITOR PAVILION	33123 OIL WELL ROAD	PUNTA GORDA	33955	4	23.4468	U	N
STATE GOVERNMENT FACILITY	WAREHOUSE	33123 OIL WELL ROAD	PUNTA GORDA	33955	4	23.4468	U	N
STATE GOVERNMENT FACILITY	WATER LAB	33123 OIL WELL ROAD	PUNTA GORDA	33955	4	23.4468	U	N
STATE GOVERNMENT FACILITY	WATER TREATMENT PLANT	33123 OIL WELL ROAD	PUNTA GORDA	33955	4	23.4468	U	N
TELEVISION	W17CK		PORT CHARLOTTE		2	10.3617	OUT	N
<i>U = UNDETERMINED</i>								

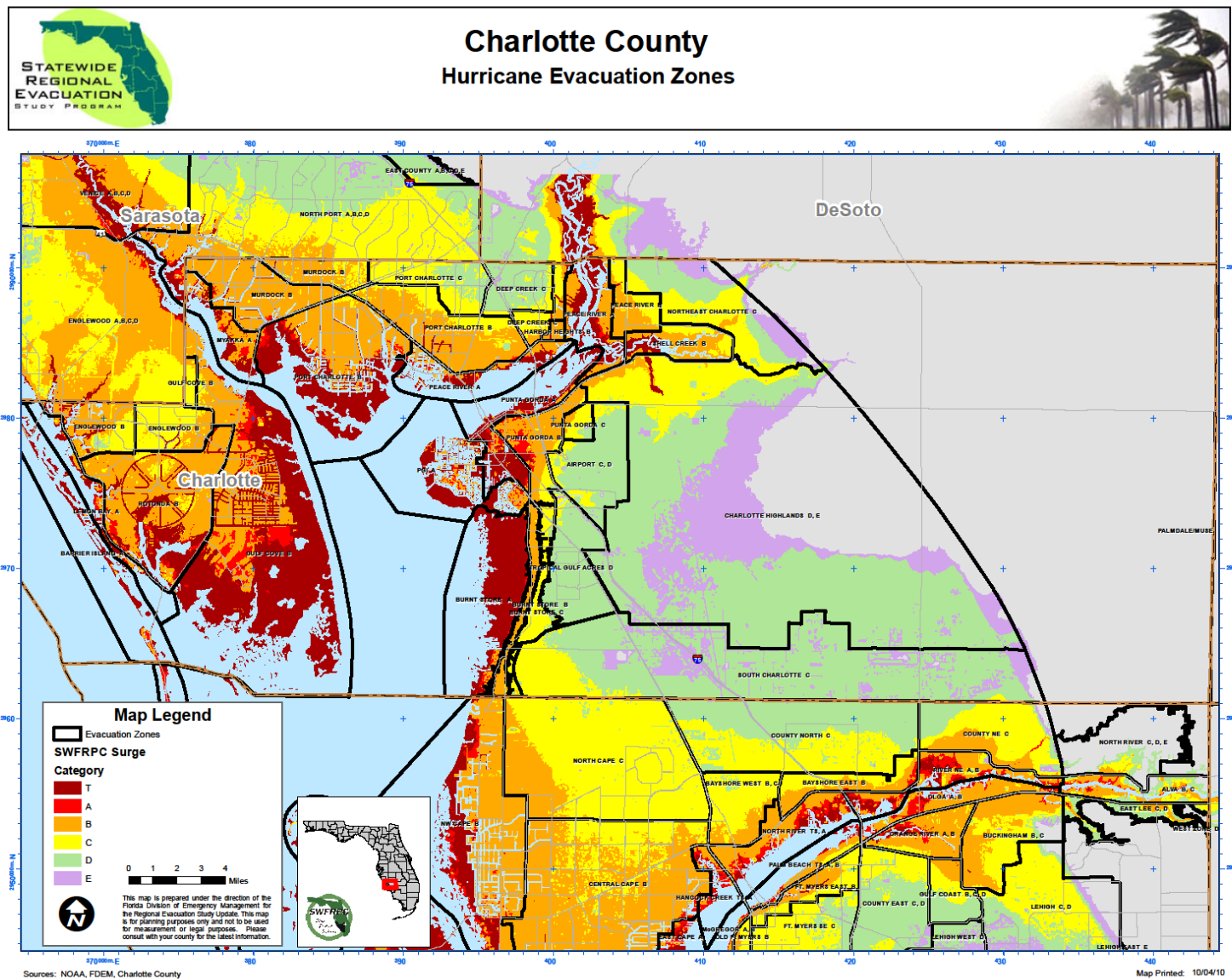
Map IVA-1: Traffic Evacuation Zones



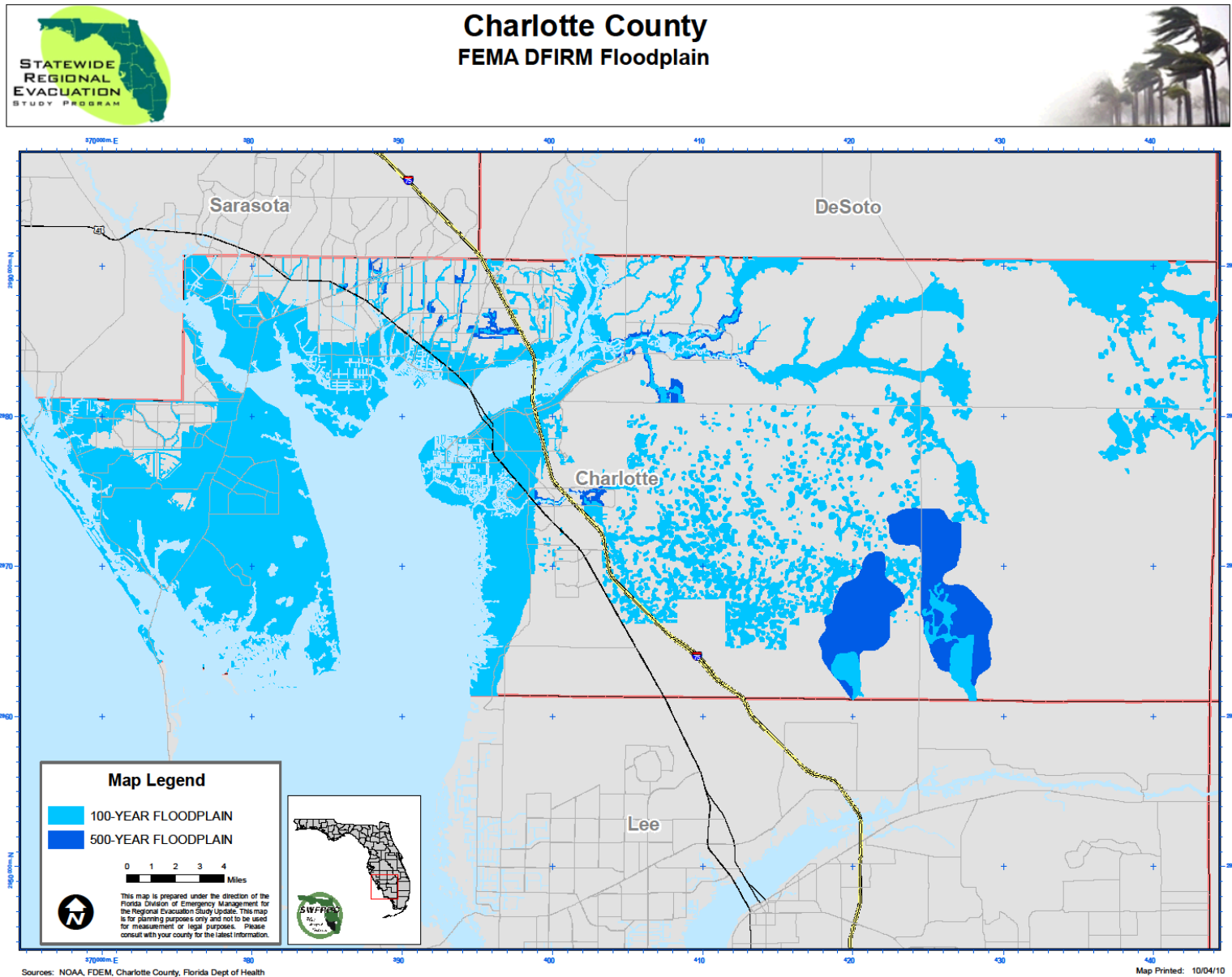
Map IVA-2a: Hurricane Evacuation Zones with Traffic Evacuation Zones



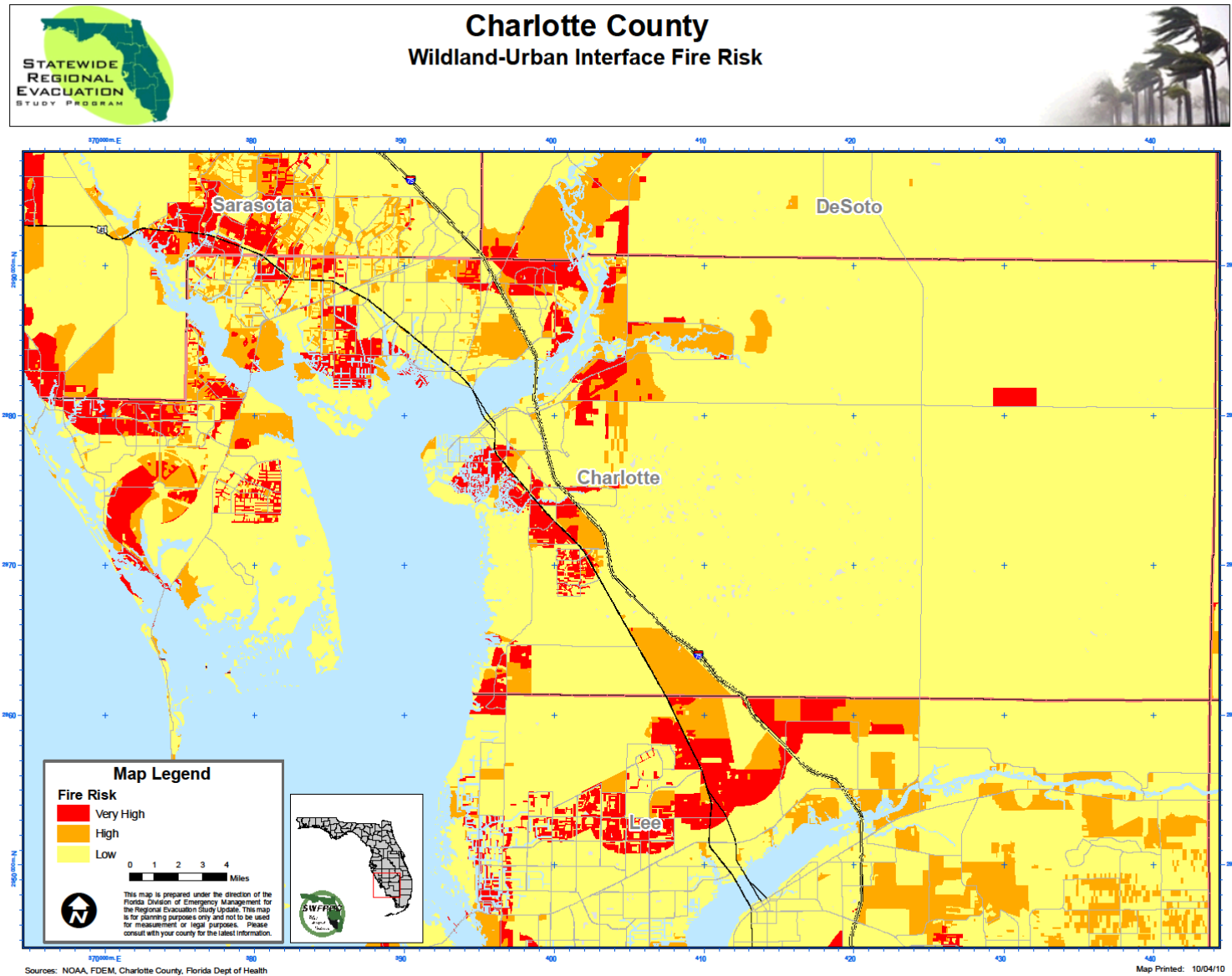
Map IVA-2b: Hurricane Evacuation Zones



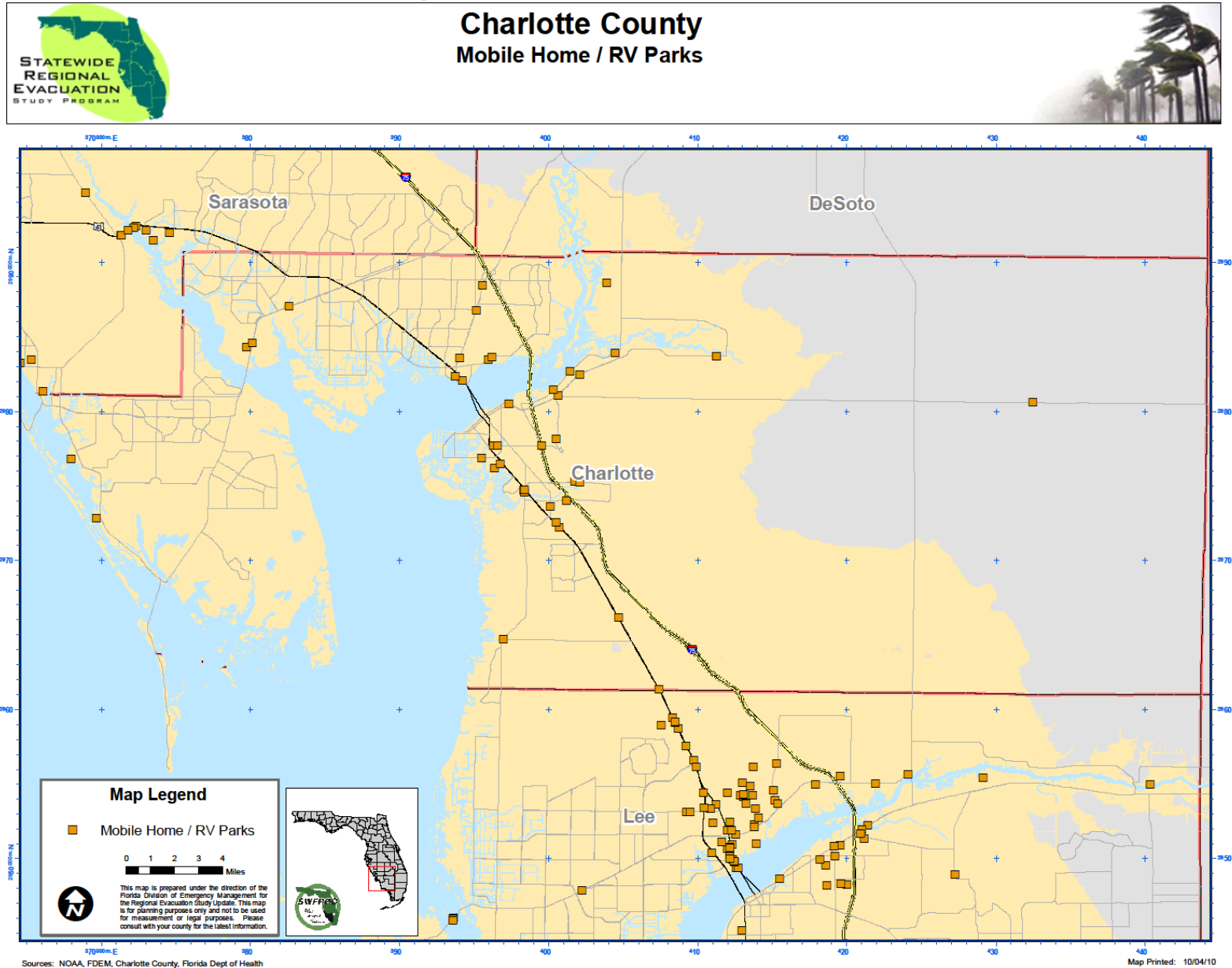
Map IVA- 3: Flood Plain



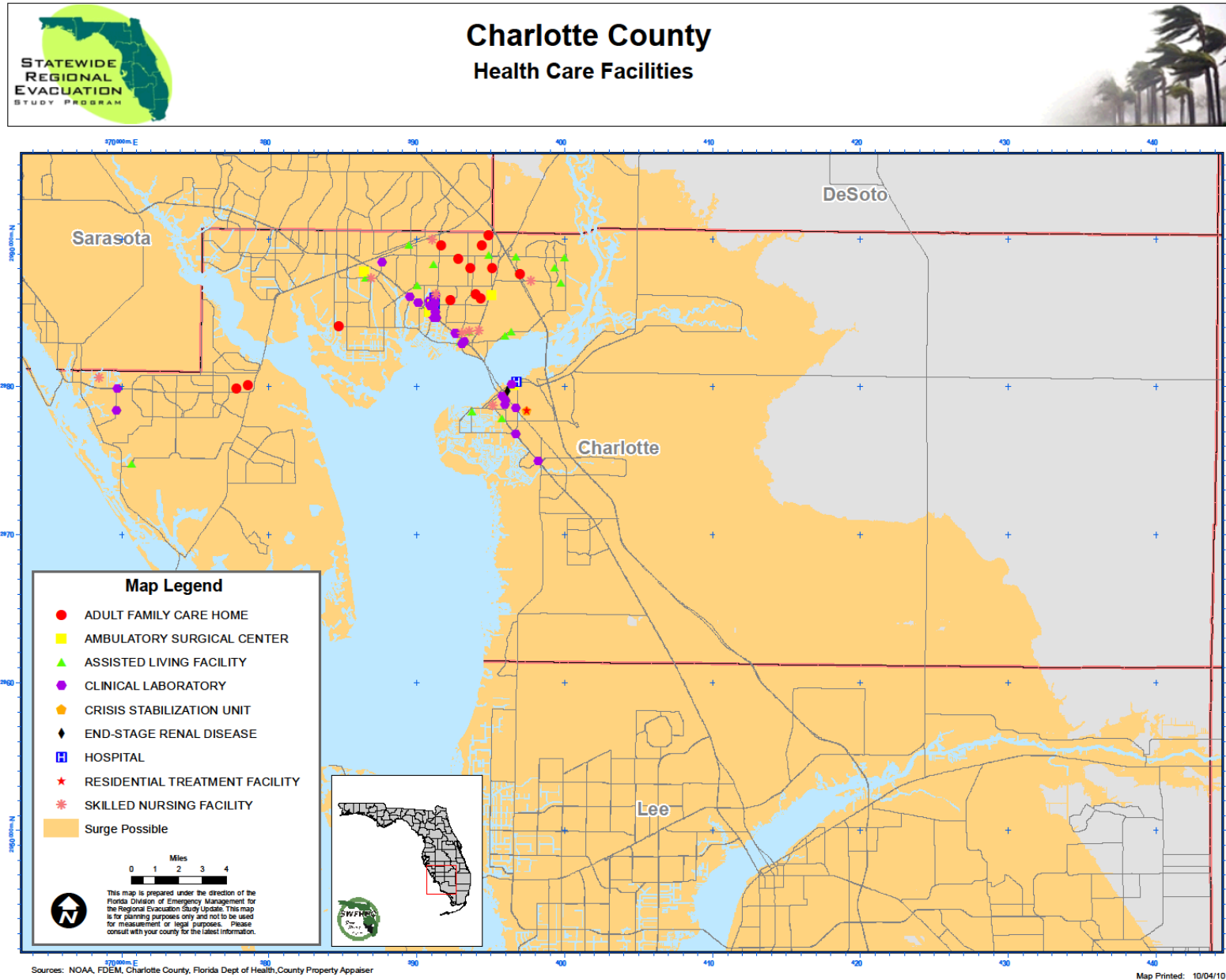
Map IVA- 4: Wildland-Urban Interface Fire Risk



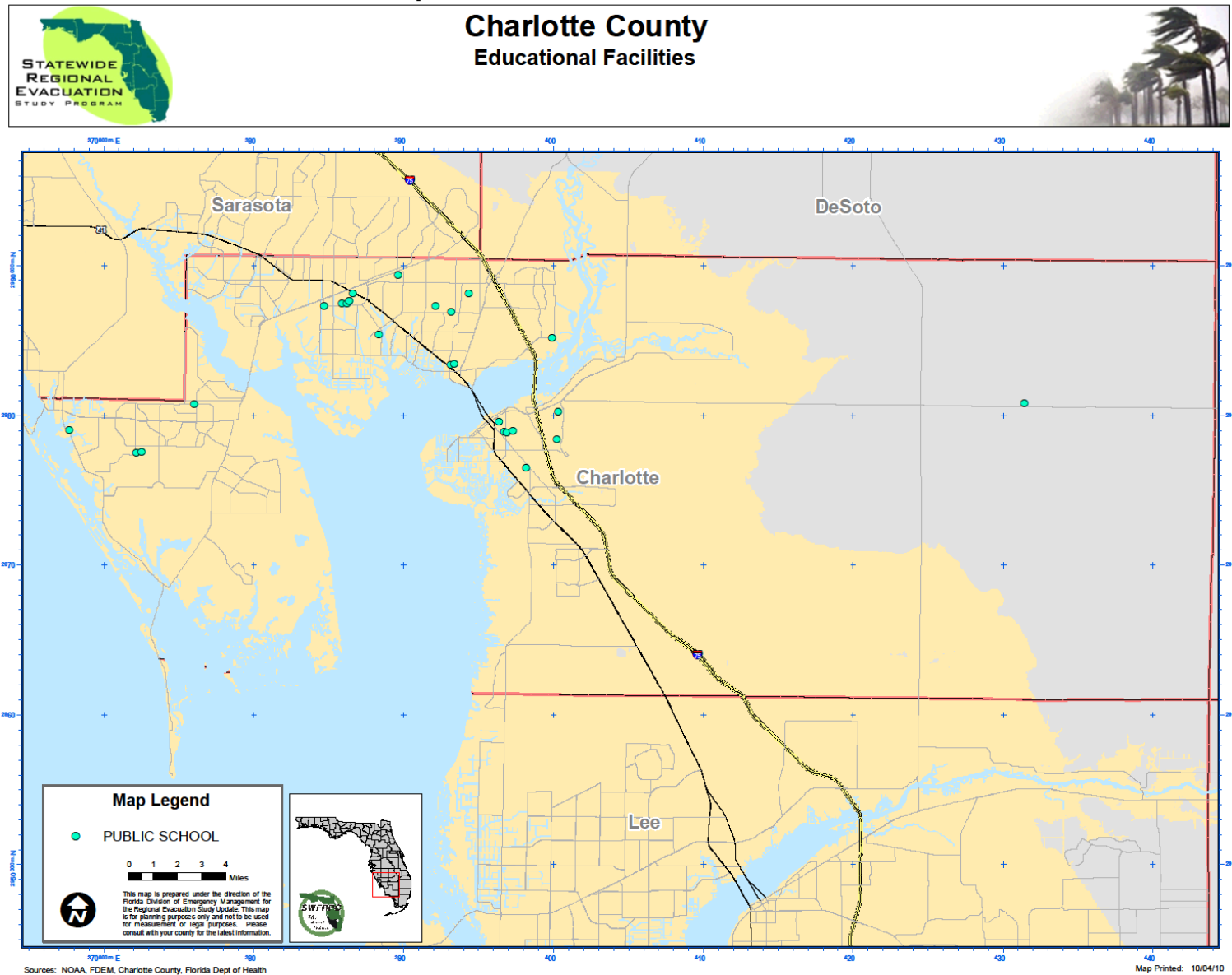
Map IVA-5: Mobile Home/ RV Parks



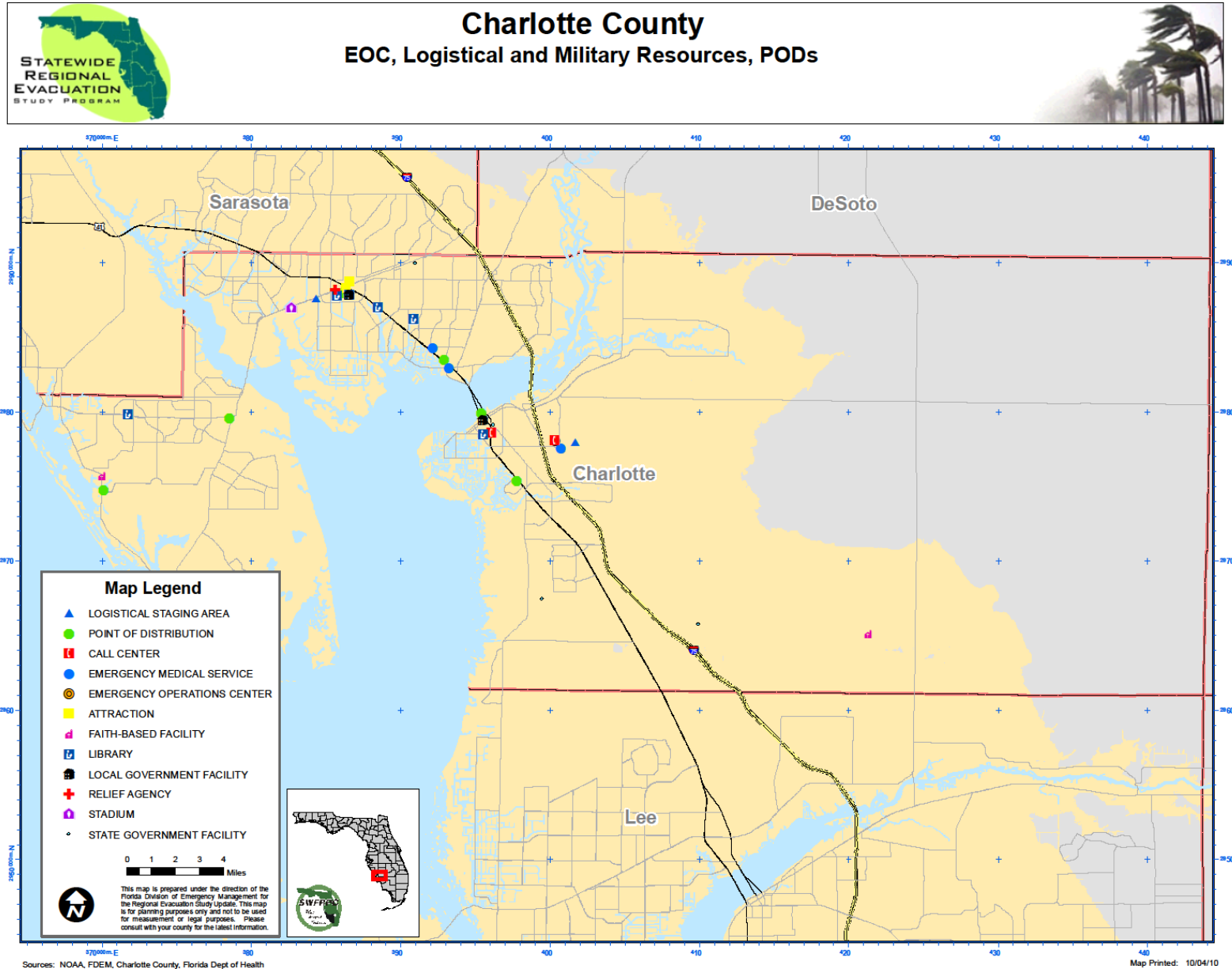
Map IVA-6: Health Care Facilities



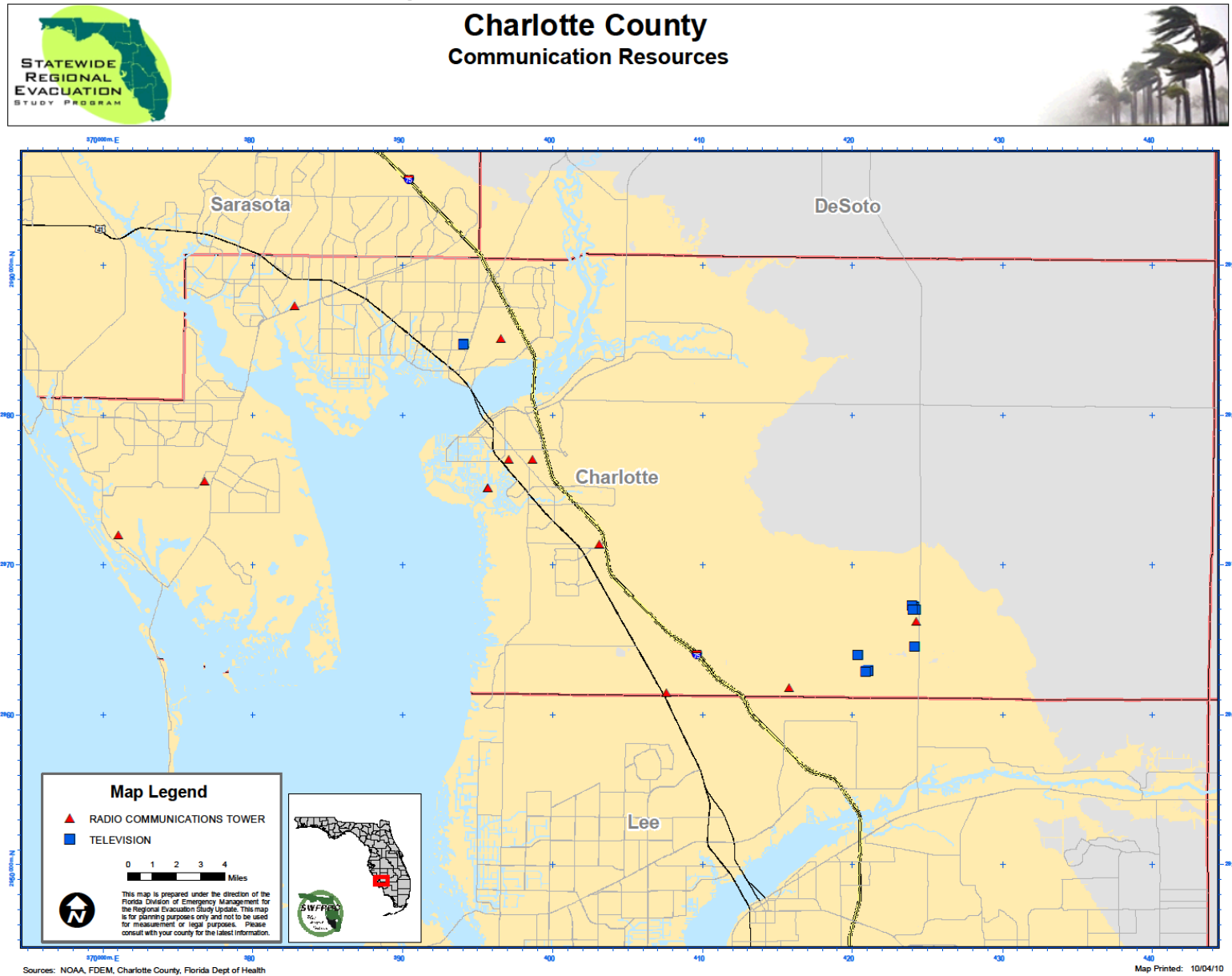
Map IVA-7: Schools and Universities

Charlotte County
Educational Facilities

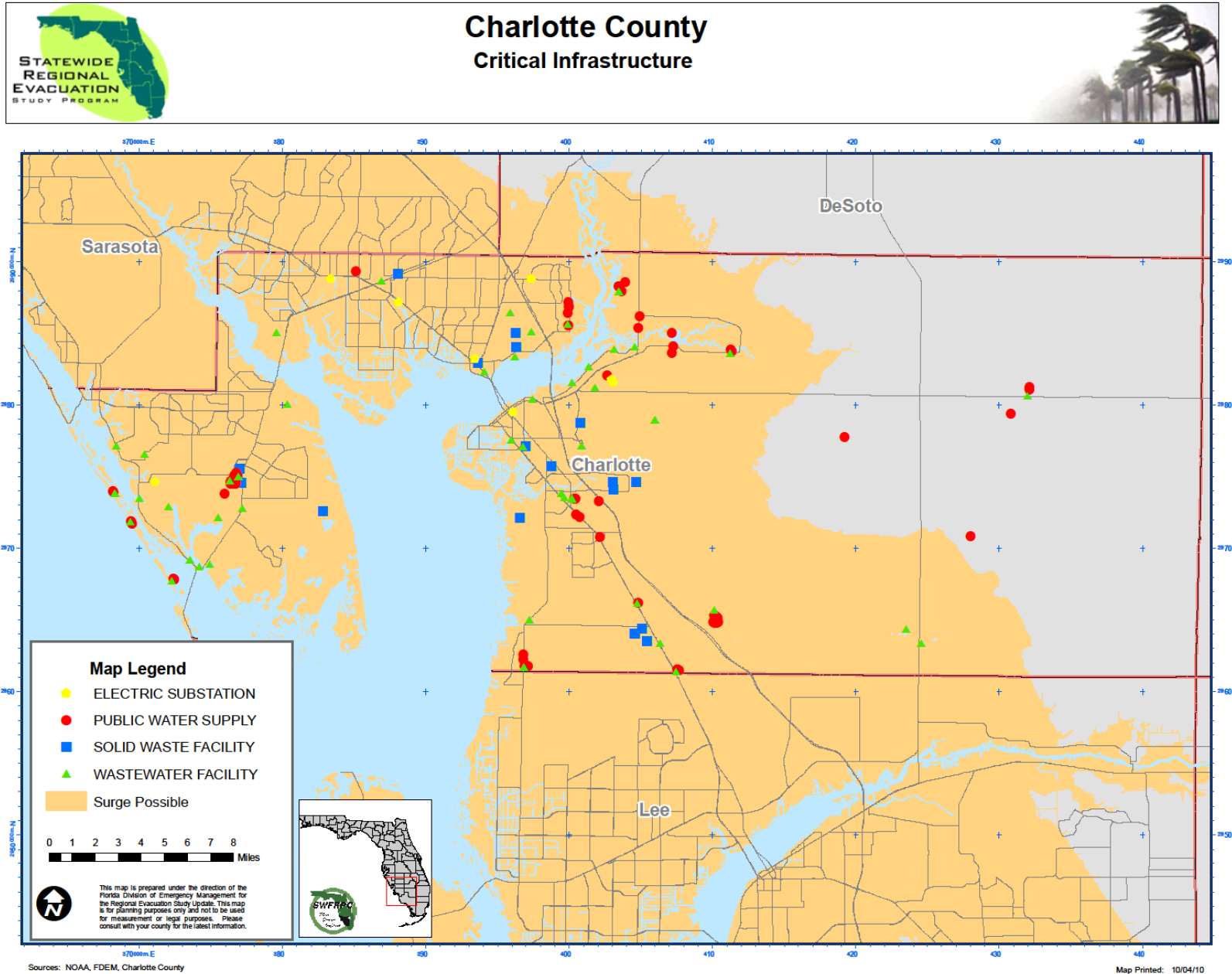
Map IVA-8: EOCs, Logistical and Military Resources, PODs



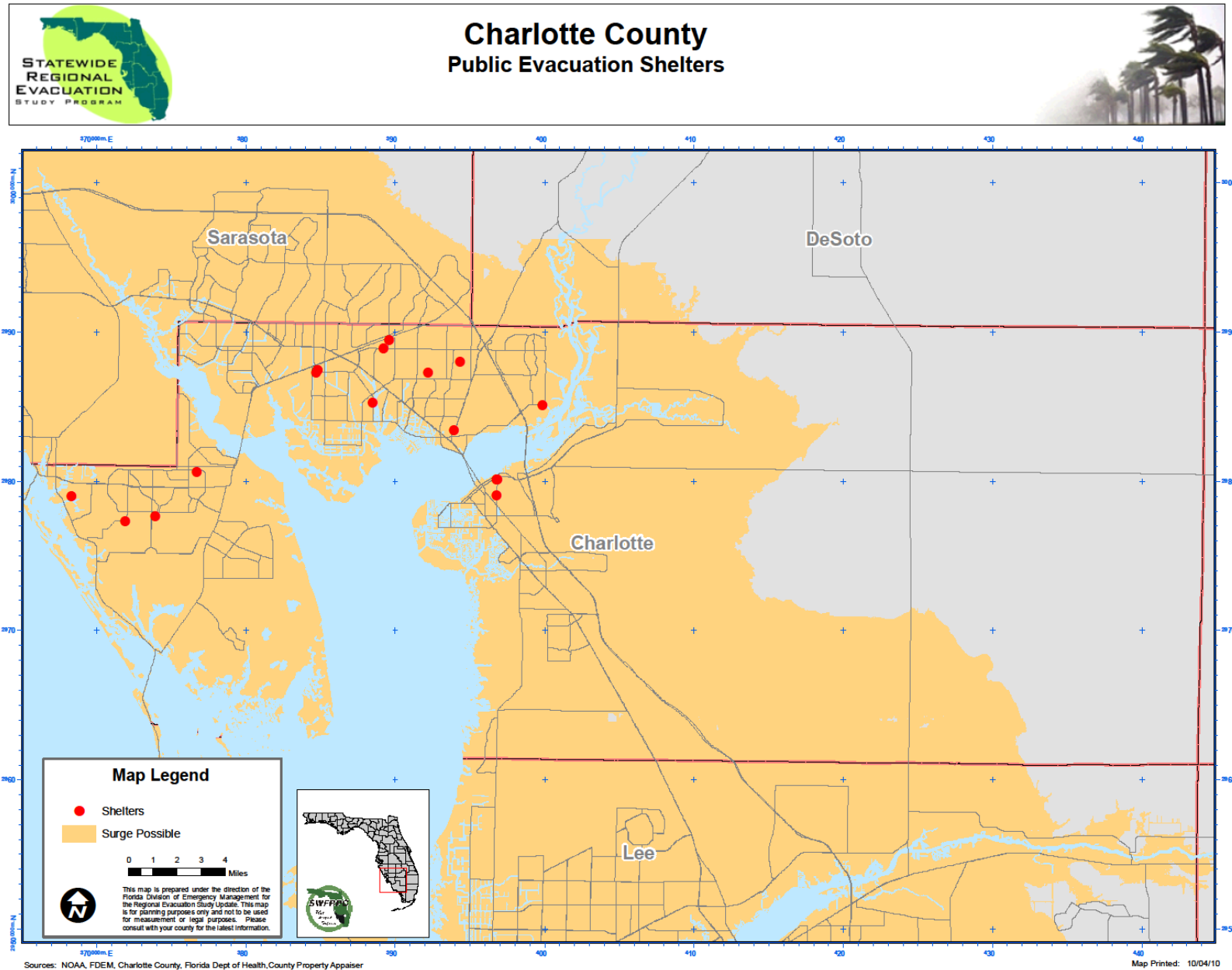
Map IVA-9: Communication Resources



Map IVA-10: Critical Infrastructure



Map IVA-11: Public Shelters



Map IVA-12: County Evacuation Routes Vulnerable to Freshwater Flooding

