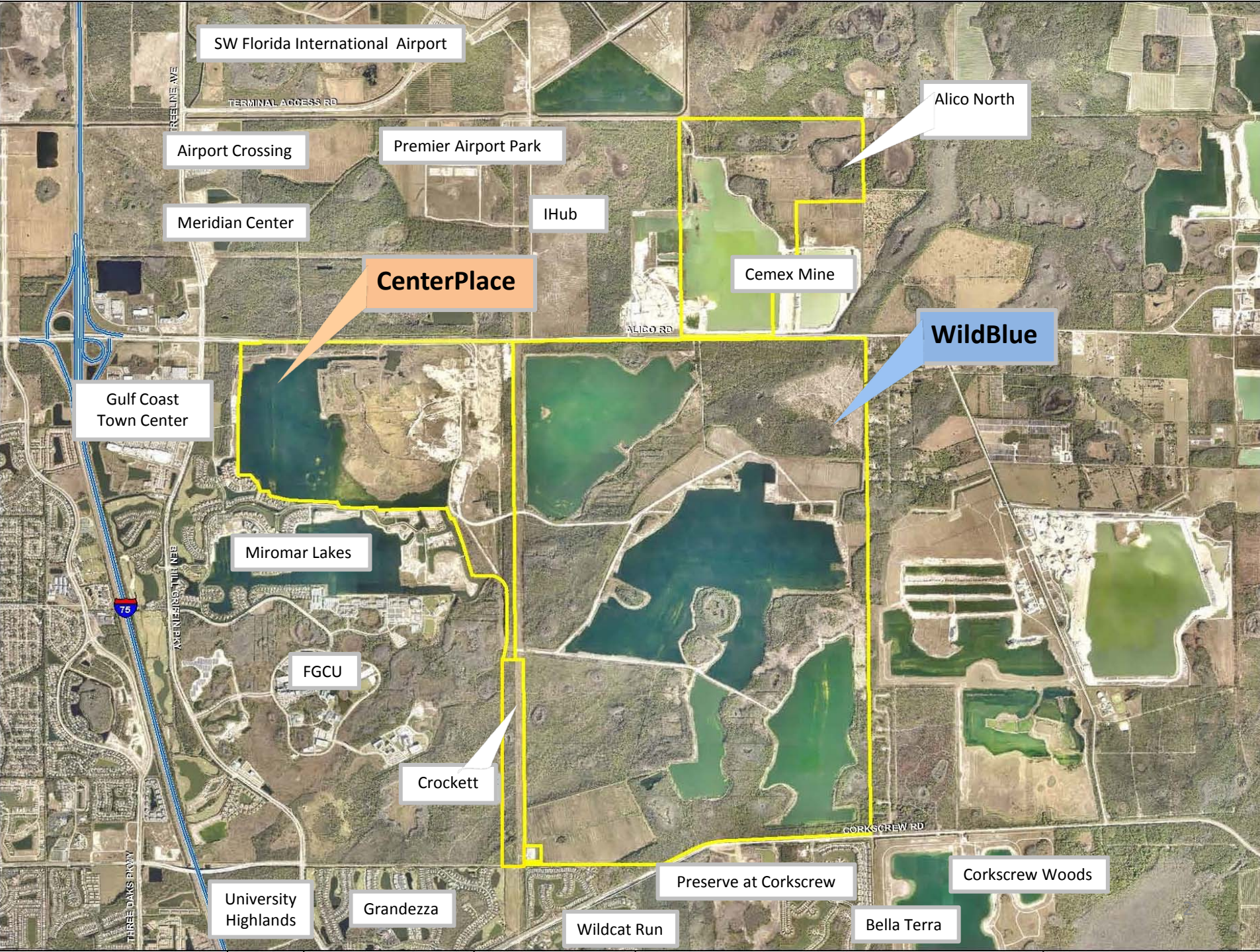


WildBlue

A graphic of stylized blue waves, consisting of several horizontal, wavy lines in different shades of blue, positioned directly beneath the 'WildBlue' text.

Calling you home.



SW Florida International Airport

Airport Crossing

Meridian Center

Premier Airport Park

IHub

Alico North

CenterPlace

Cemex Mine

WildBlue

Gulf Coast
Town Center

Miromar Lakes

FGCU

Crockett

University
Highlands

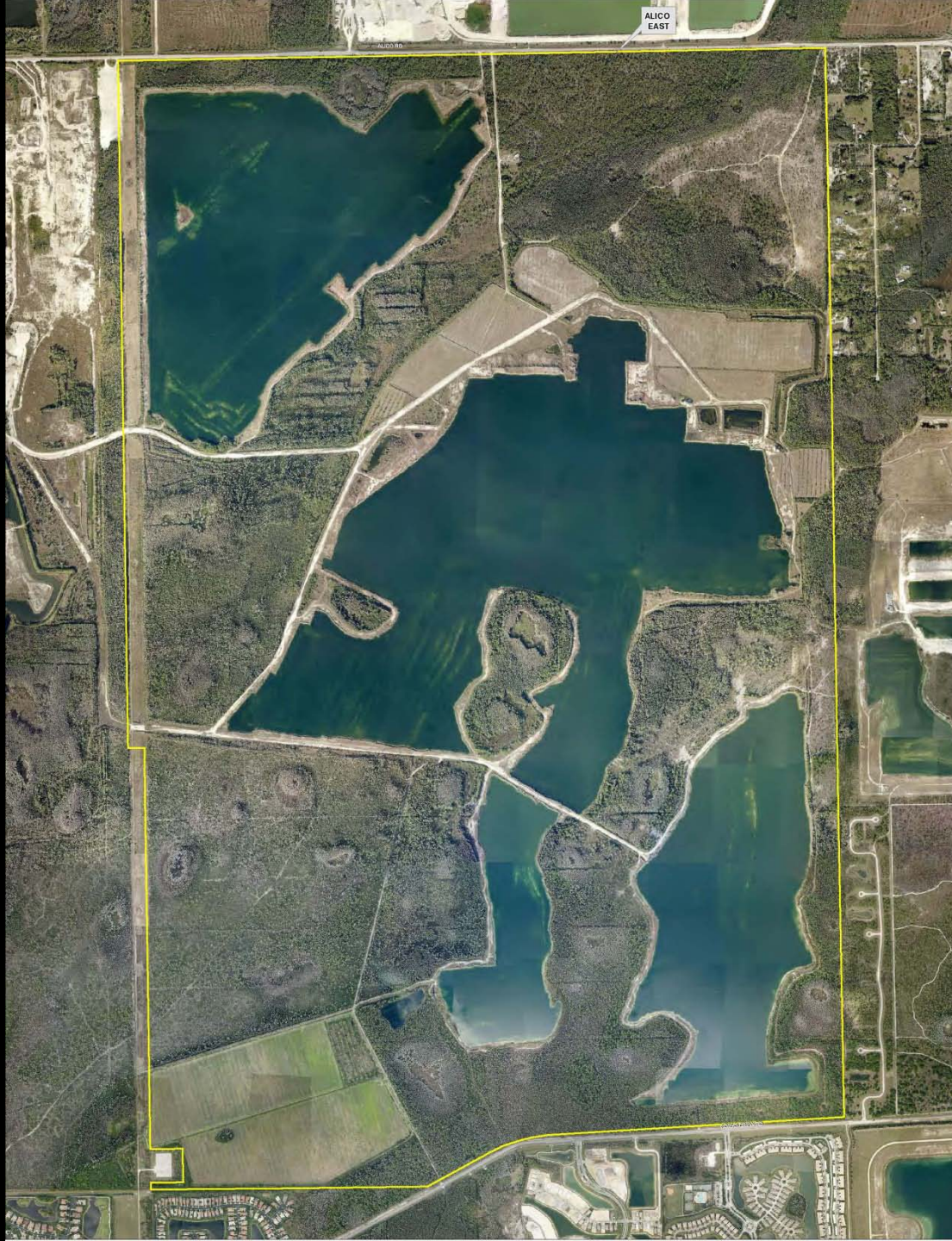
Grandeza

Wildcat Run

Preserve at Corkscrew

Corkscrew Woods

Bella Terra





Ginn Plan



WILDBLUE

FIELD STUDIES COMPLETED ON PROPERTY

Protected Species Survey

*Indigo Snake, Red-Cockaded Woodpecker, Everglade Snail Kite,
Wood Stork, Crested Caracara, Florida Bonneted Bat, Florida Panther*

Cultural Resource Assessment

Jurisdictional Wetland Survey

Boundary Survey

Hydrographic Bathymetric Survey

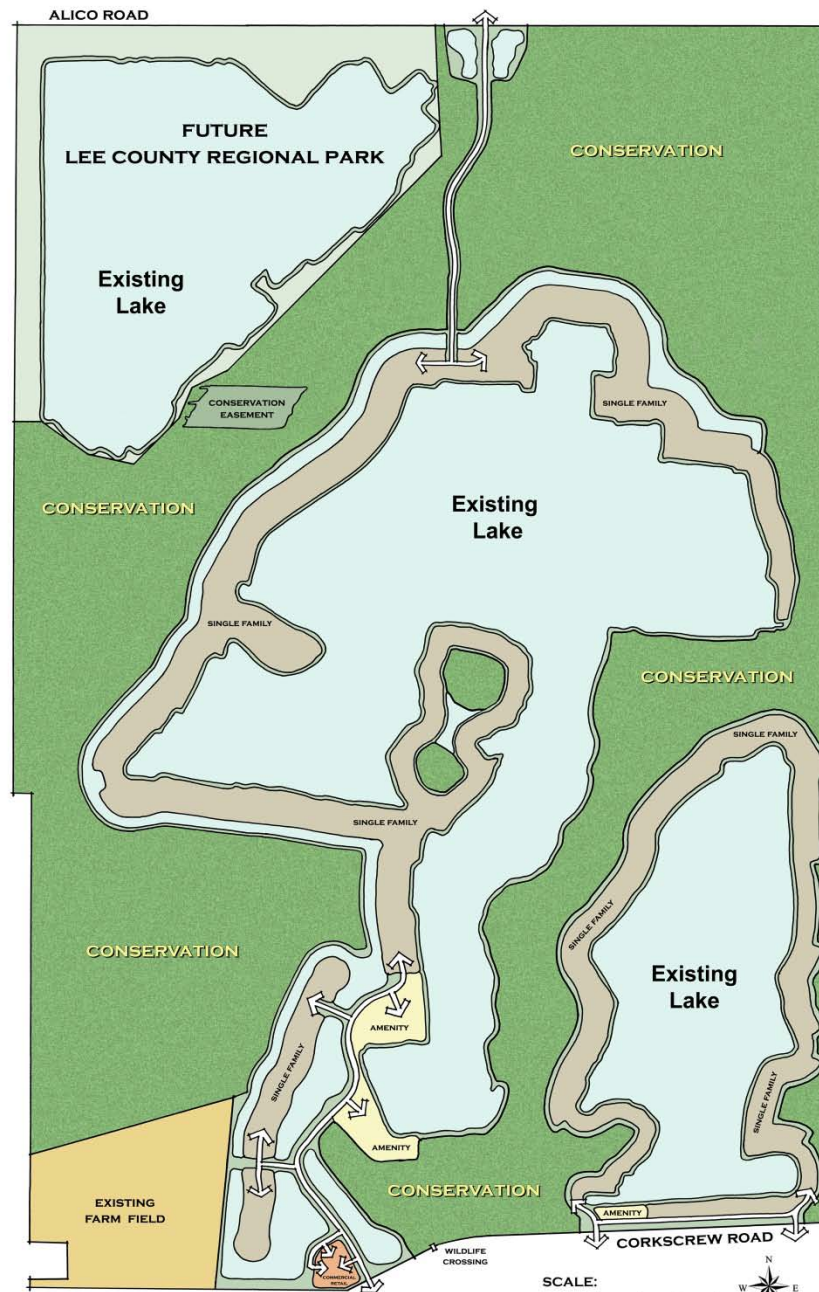
Phase I Environmental Site Assessment

Limited Phase II Environmental Site Assessment

Resource Extraction Reclamation Plan

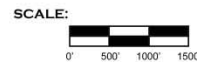
Traffic Sensitivity Test

Hydrogeologic Setting Assessment



PREPARED FOR:
PRIVATE EQUITY GROUP

WildBlue
CONCEPTUAL MASTER PLAN
JANUARY 27, 2014

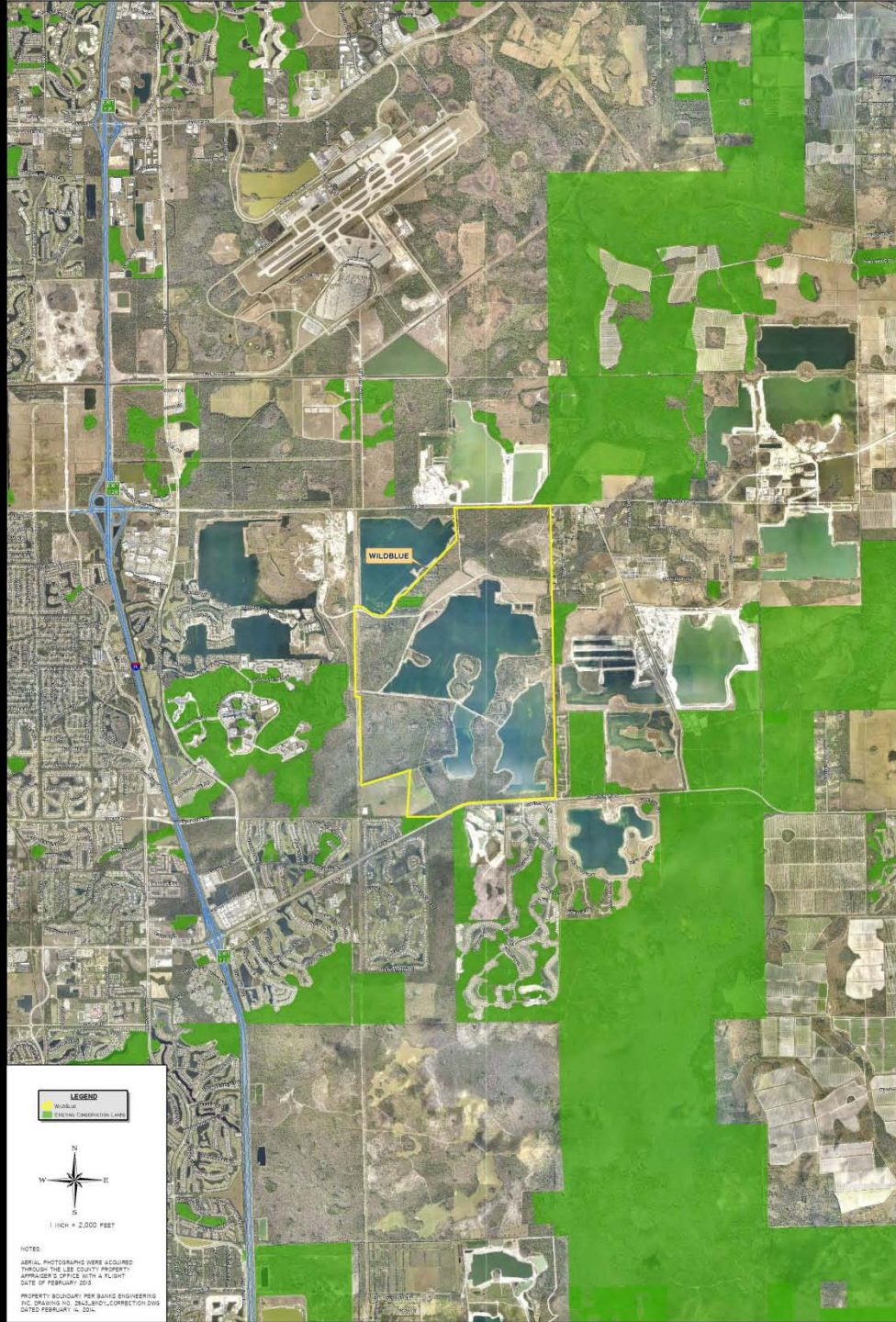


WILDBLUE

Existing Approvals (Ginn)

Proposed (WildBlue)

Total Project Acreage	3,552	2,960
Wetland Impact Acreage	380	219
Protected On-Site Wetlands connected to Flow-ways	480	586
Total Preserve Acreage	968	1,318
Preserved Panther Habitat	953	1,245
Slough Crossings	Five	One
Development Footprint	1,403	754
Density	332 single-family	1,000 single-family
Utilities	Well & Septic	Municipal
On-Site Amenities	27-hole Golf Course	Clubhouse/Tennis Beach Club/Marina Neighbor Commercial Community Farming
Community Benefit	None	488 acre County Park



LEGEND
WILDBLUE
WETLAND CONSERVATION LAND



NOTES:
AERIAL PHOTOGRAPHS WERE ACQUIRED
THROUGH THE LEE COUNTY PROPERTY
APPRAISER'S OFFICE WITH A FLIGHT
DATE OF FEBRUARY 2013.
PROPERTY BOUNDARY PER BAILEY ENGINEERING
INC. DRAWING NO. 2014-001-CONNECTION.DWG
DATED FEBRUARY 14, 2014.

WILDBLUE

Regional & Community Benefits

- ❖ **Reestablish connectivity of Stewart Cypress Slough to Estero Bay Watershed**
 - 1,318 acres of restoration and preservation, completed with private funding
- ❖ **Creation of three-mile long WildLife Corridor**
 - 1,245 acres of protected primary panther habitat, completed with private funding
- ❖ **Improvements to Ground Water Resources**
 - 14% reduction in permitted water use
 - Elimination of wells and septic fields
 - Municipal utilities
- ❖ **488 acre Regional Park donated to Lee County**

WildBlue

A graphic of stylized blue waves, consisting of several horizontal, wavy lines in varying shades of blue, positioned directly beneath the 'WildBlue' text.

Calling you home.