

# CAMPUS MASTER PLAN UPDATE 2015 - 2025



## First Public Hearing

June 10, 2015

Prepared For The  
Office of Facilities Planning



Prepared By

**CAMPUS PLANNING GROUP &  
PHIL GRAHAM LANDSCAPE ARCHITECTURE**

# AGENDA

---

Progress of 2015-25 Plan Update

Space Utilization/ Master Plan Program

Regional Integration/ Impact

Plan Concepts

Natural and Urban Systems

Questions / Discussion



## PROJECT SCHEDULE

Date: 1/11/2015

[illegible]Dec  
2015

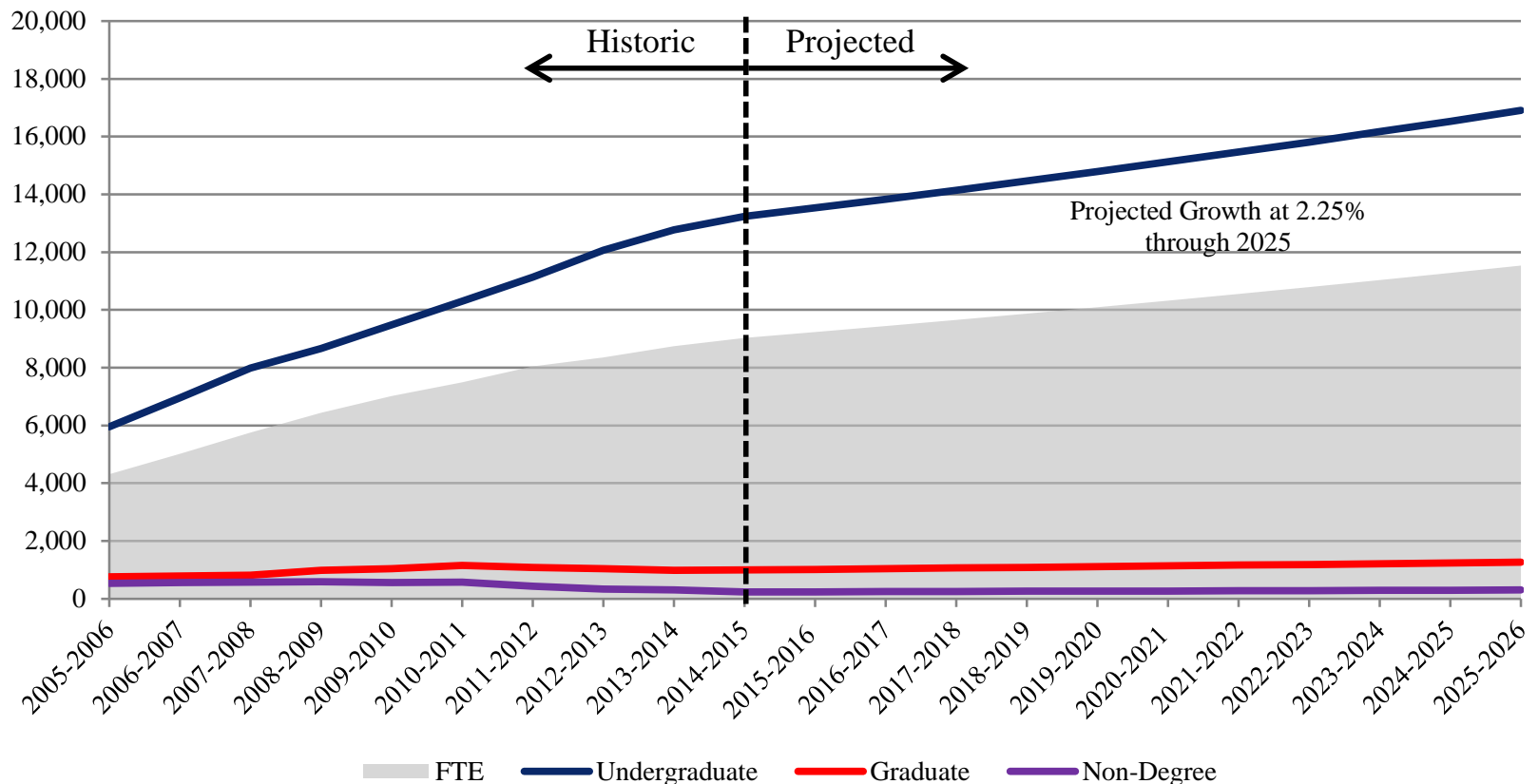
# Open and Transparent Process

- Ongoing guidance of Master Plan Steering Committee
- Oversight of VP's and President's Cabinet
- Over **75 meetings** or consultations with stakeholders
- Multiple consultations with regional developers and community representatives
- University wide Town Hall meeting
- Transportation Forum
- Energy/ Environment Workshop
- Multiple consultations with Lee County
- Multiple consultations with Lee Tran
- 3 FGCU Board of Trustees meetings to date
- One informal Public Hearing / 2 formal Public Hearings
- 90 day public review and comment
- 90 day local government and state agency review
- Final adoption of Master Plan Update



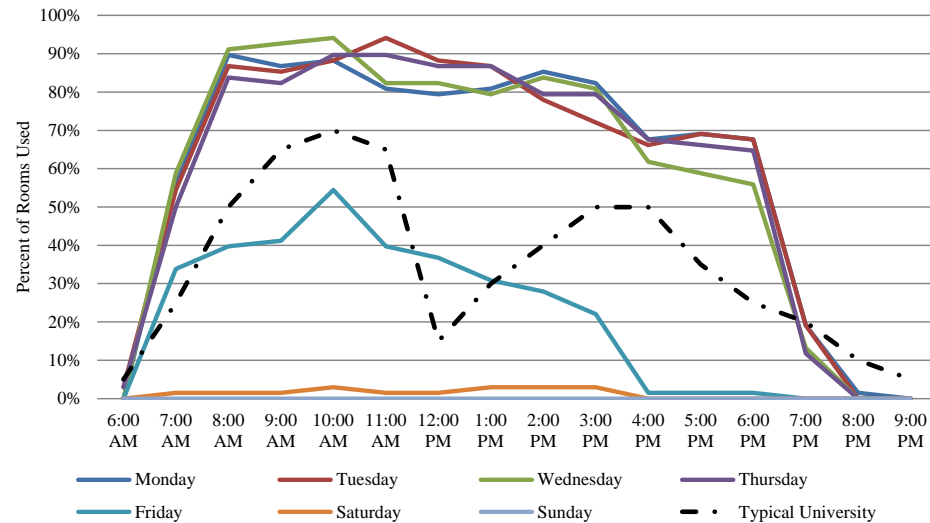
# Historic and Projected Enrollment

The figure below provides a visual representation of the historic enrollment from the opening of the University to the current year and projected enrollment through 2025 based on a continuous 2.25 percent increase per years 2015-2025.

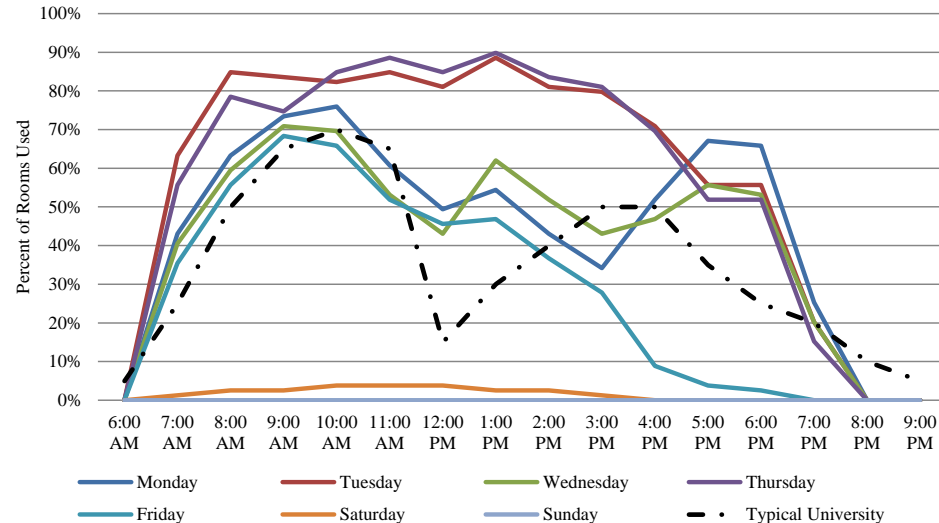


# Utilization by Day of the Week

The figures below illustrate classroom utilization by day of week for the Fall Semester 2014 and Spring Semester 2015 courses. The images only include general classrooms; laboratory classrooms are not included in the figures below.



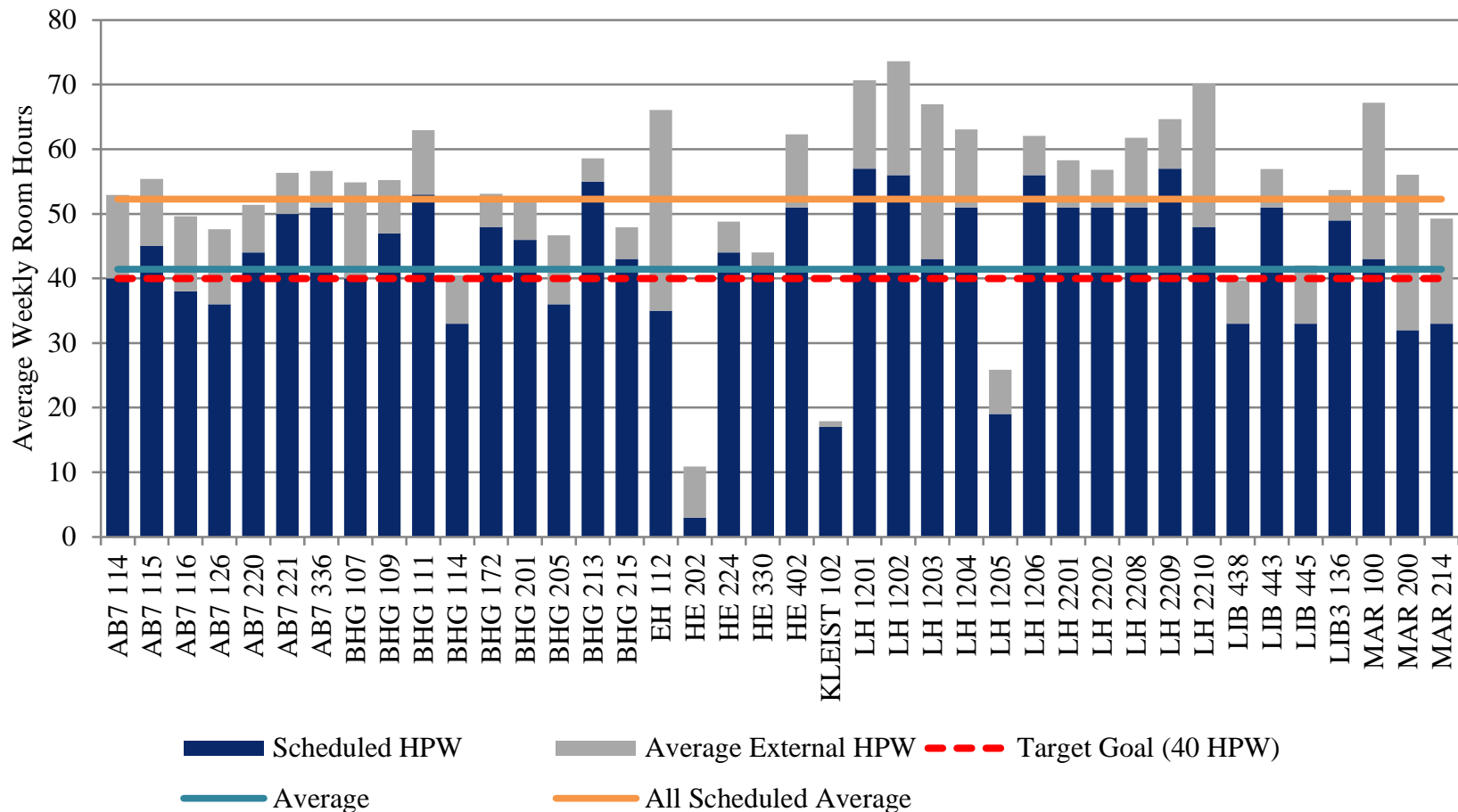
Fall 2014



Spring 2015

# Utilization by Classroom

The figure below and on the following page illustrates the classroom utilization per classroom by hours a week for Fall Semester 2014 courses.



# Projected Space Needs / Demands

**Question: What is the correct amount of space for FGCU?**

## Comparisons:

- State University System (SUS) of Florida BOG suggests: 122.2 ASF per FTE
- SUS Suggested Average ASF per FTE of Florida Peer\* Reporting Universities: 115.7 ASF per FTE
- UWF and UNF averaged current utilization suggests: 106.9 ASF per FTE
- Texas Higher Education Coordinating Board (THECB) Space Standards suggests: 100.2 ASF per FTE
- Peer\*\* Institutions outside of Florida suggests: 96.6 ASF per FTE
- **Current FGCU Status Quo: 72 ASF per FTE**

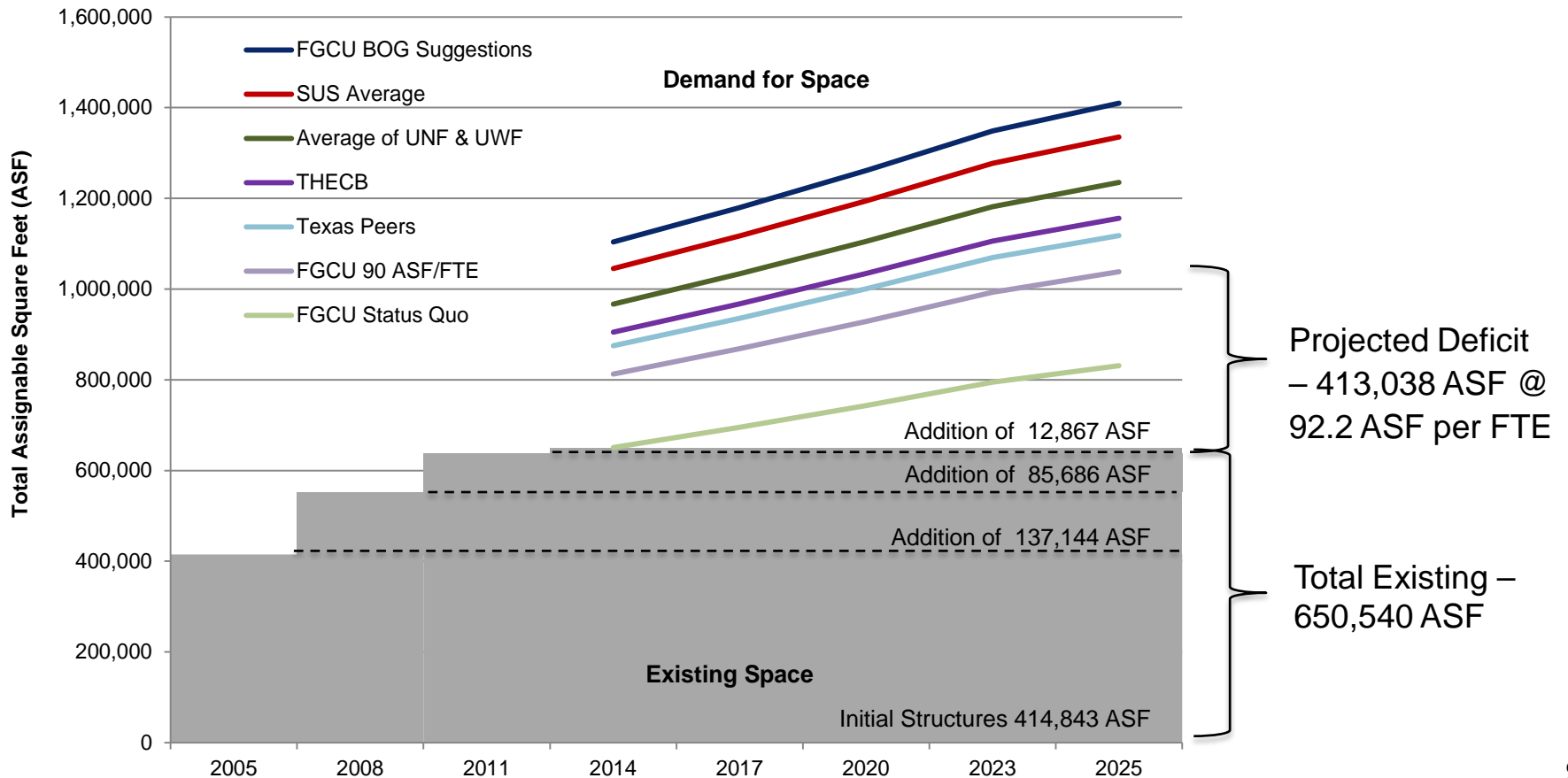
**Recommendation: 92.2 ASF per FTE**

\* Average ASF per FTE suggested for all reporting Florida Universities to the BOG excluding the University of Florida and New College

\*\* National Universities comparative in size, make-up, and age who are currently operating at an efficient ASF per FTE

# Projected Space Shortfall

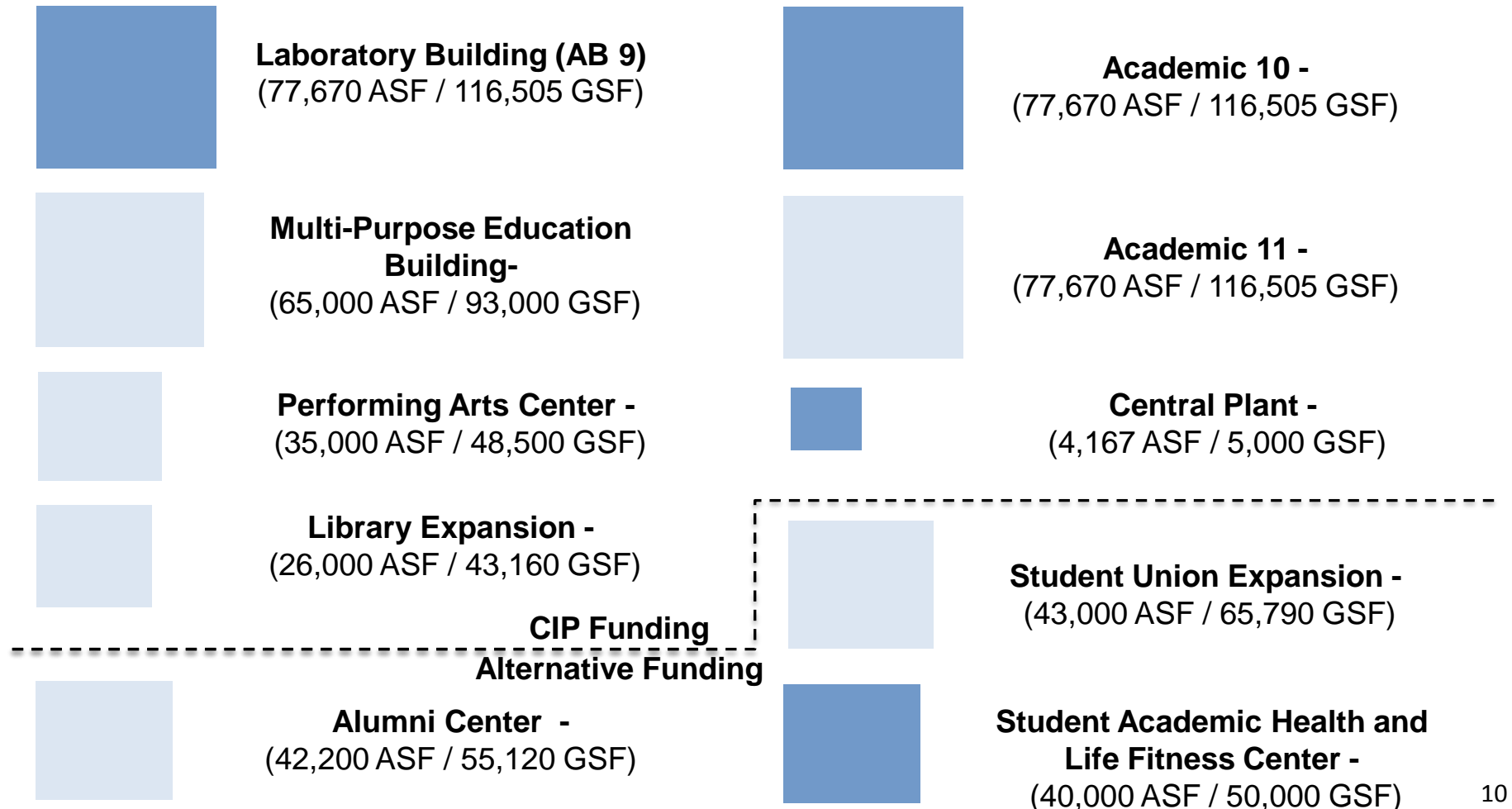
The figure below identifies the current space demands / needs for 2014 and the projected space demands / needs for a projected enrollment of approximately 18,500 in 2025 based on the comparisons.





# Projected Master Plan Program

The building blocks below indicate the number and type of building recommended for the shortage of space through 2025 for 92.2 ASF per FTE.



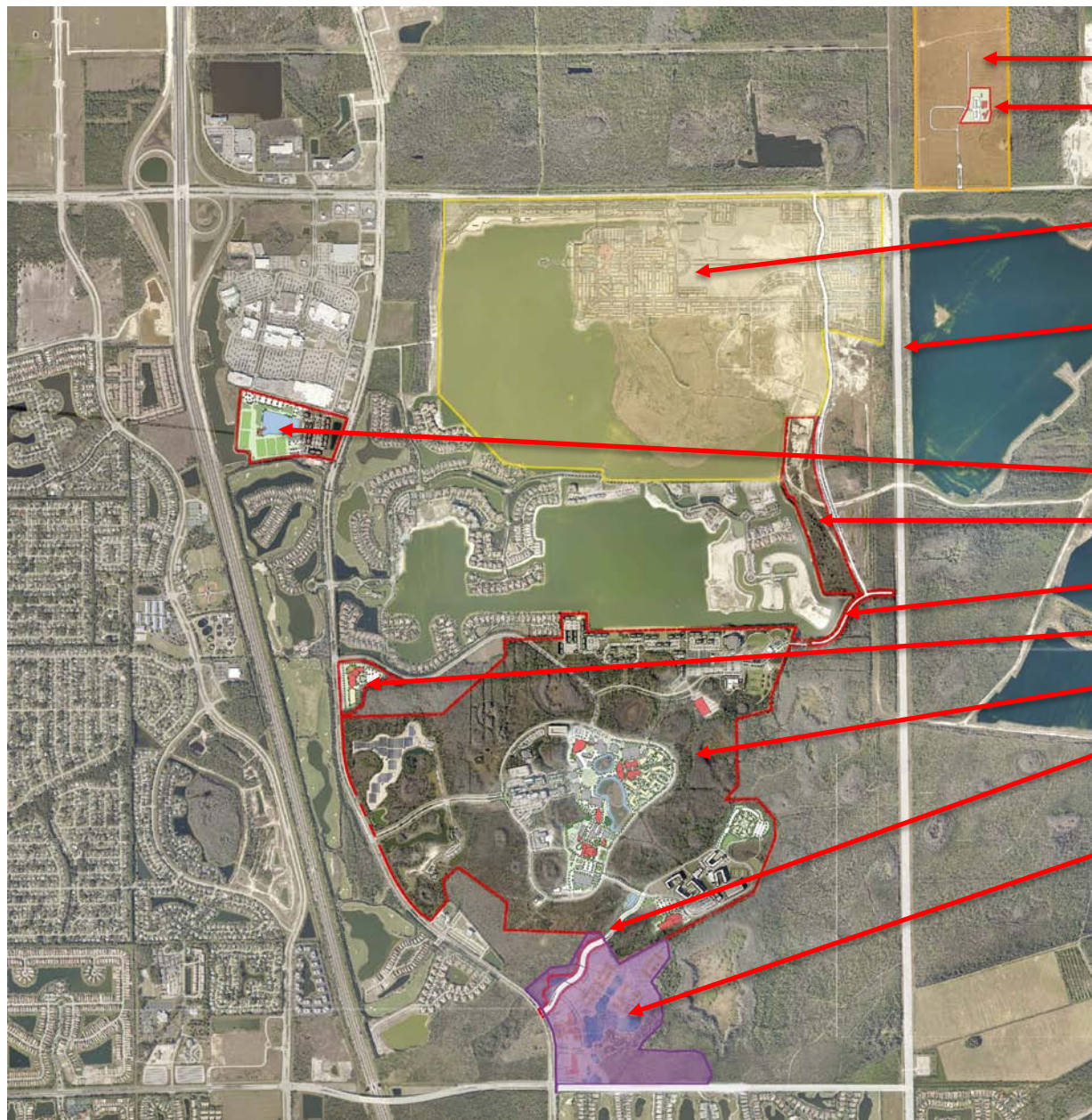


West Lake Village



Main Campus





I HUB

ETI

Center Place

Future SR 951

West Lake Village

New Land Bank

North access road

Alumni Center

Main Campus

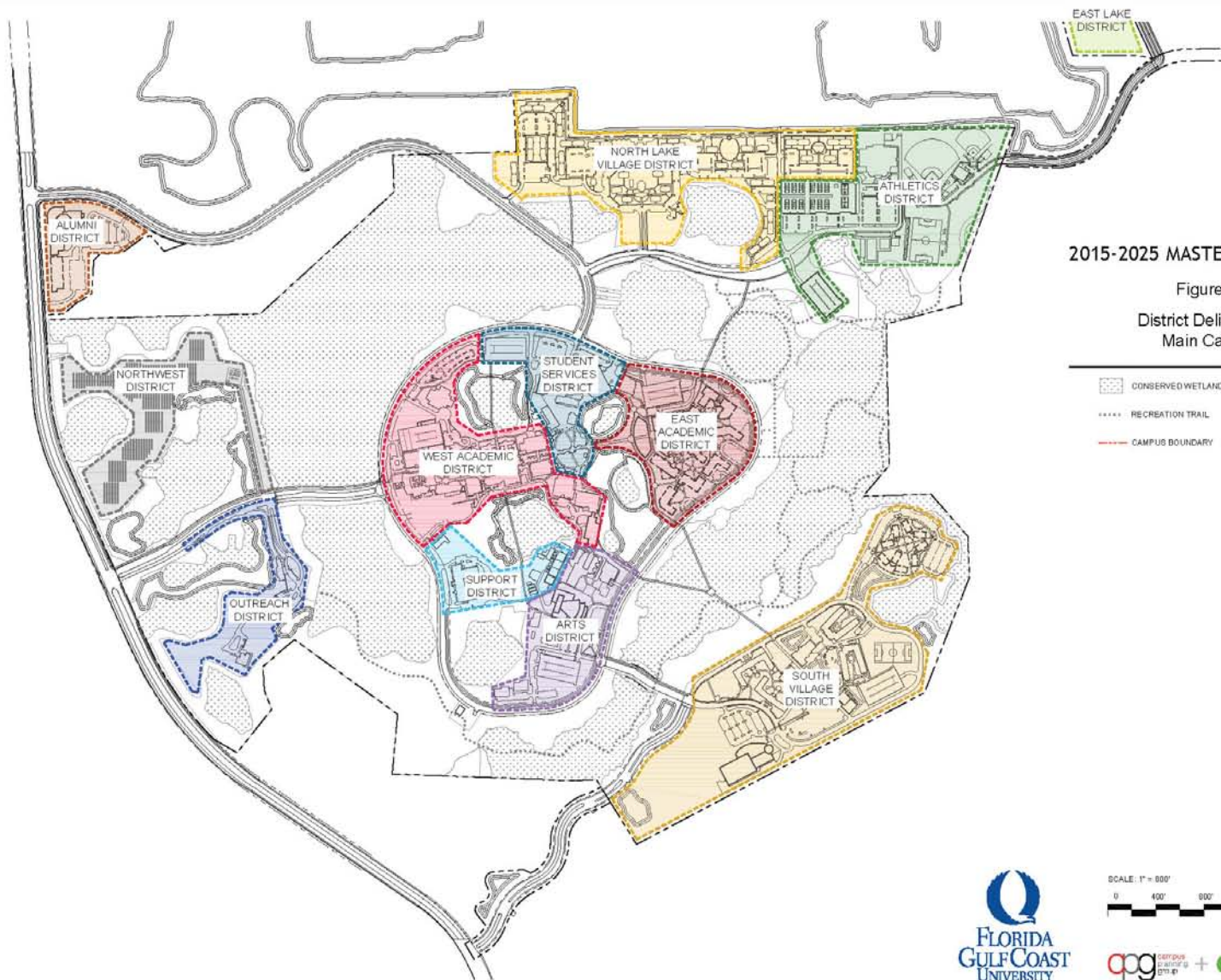
South access road

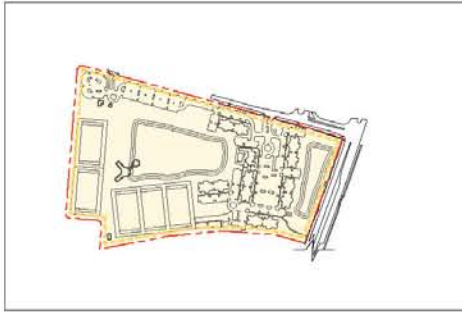
University Village

### Legend

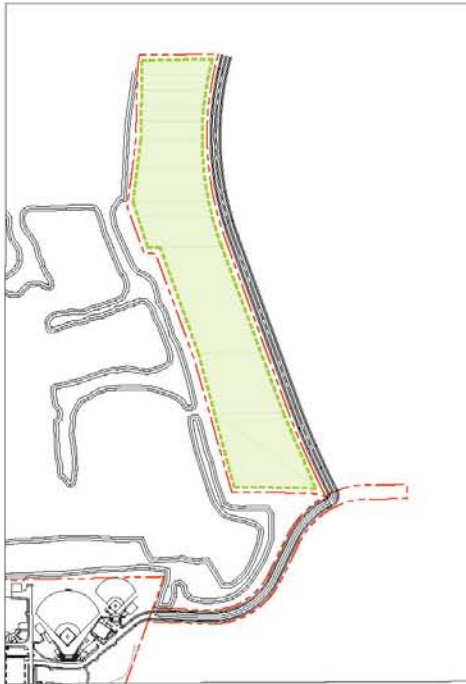
- Near Term Development
- Long Term Development
- Conservation Area
- Existing Facilities
- Shade Tree
- Sabal Palm







● West Lake Village District

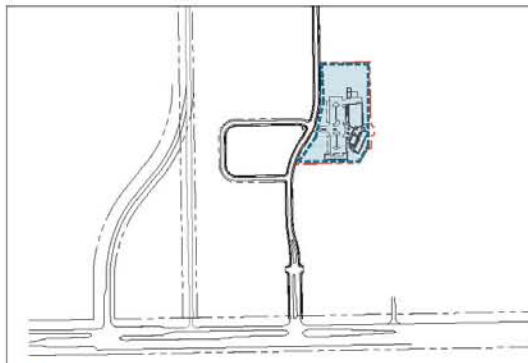


● East Lake District



FGCU Campus And Outparcels

SCALE: NTS



● Emergent Technologies Institute (ETI)

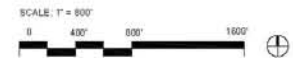


## 2015-2025 MASTER PLAN UPDATE

Figure 2-2

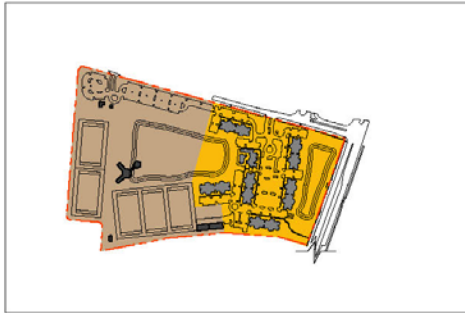
District Delineations:  
FGCU Outparcel Properties

— CAMPUS BOUNDARY

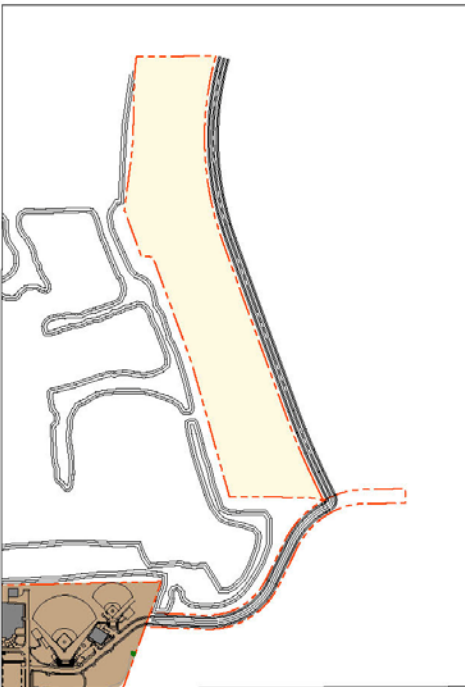




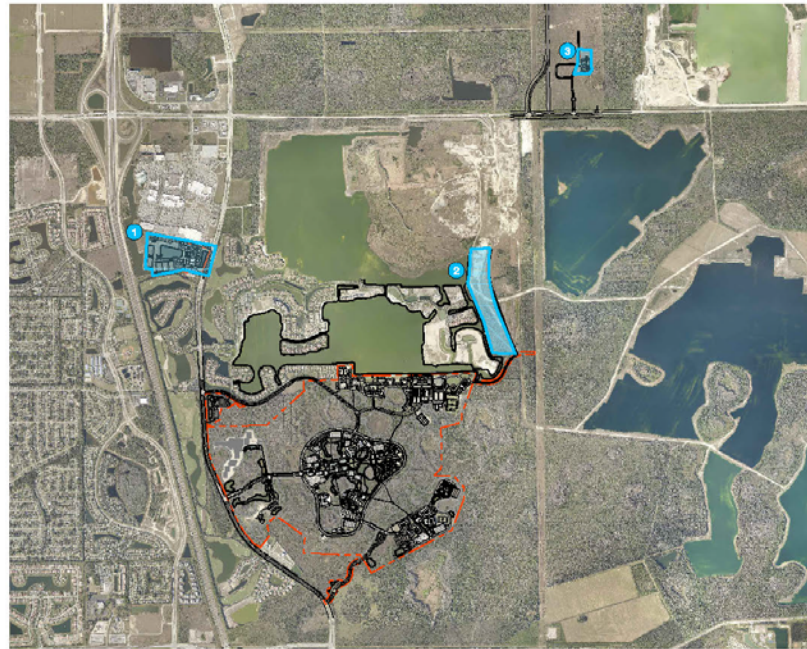




1 West Lake Village District

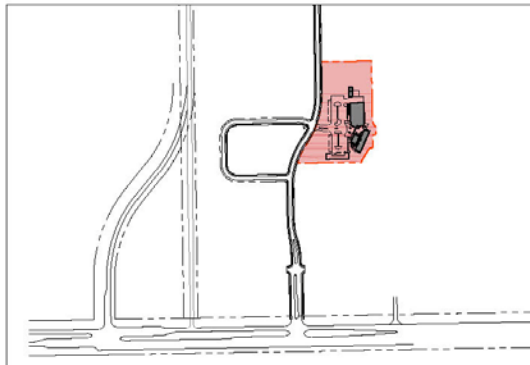


2 East Lake District



FGCU Campus And Outparcels

SCALE: NTS



3 Emergent Technologies Institute (ETI)



## 2015-2025 MASTER PLAN UPDATE

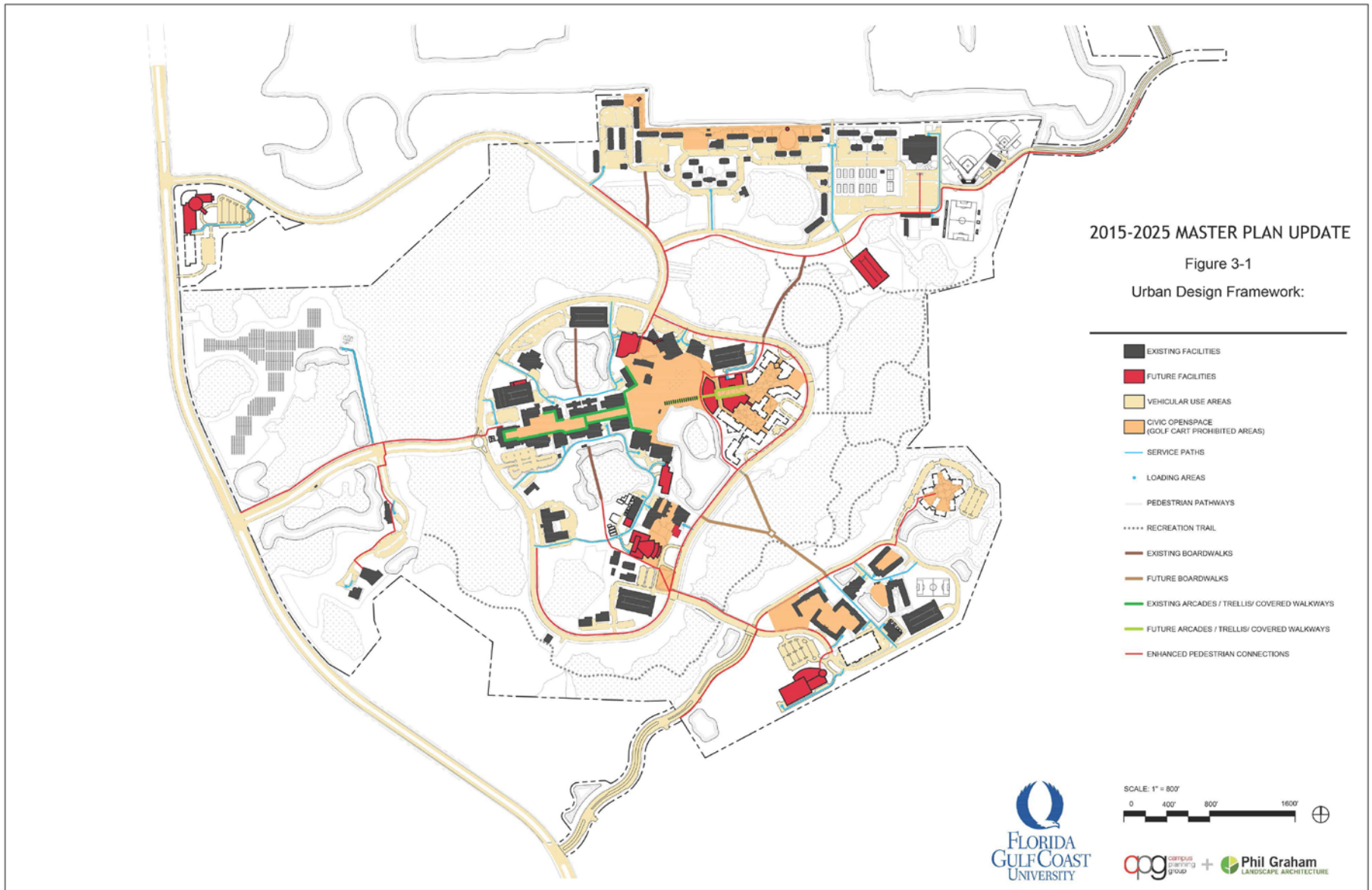
Figure 4-2

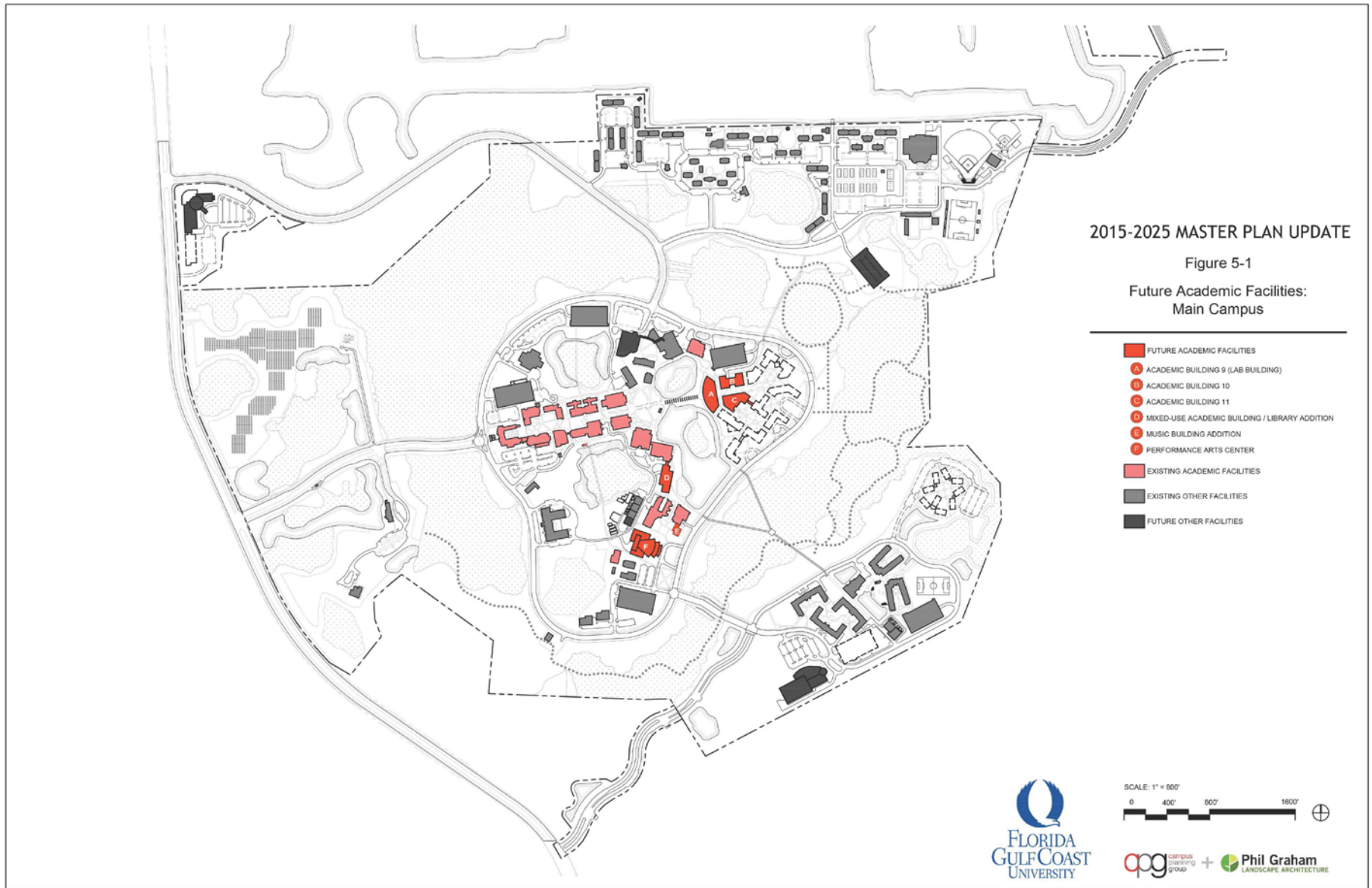
### Future Land Use: FGCU Outparcel Properties

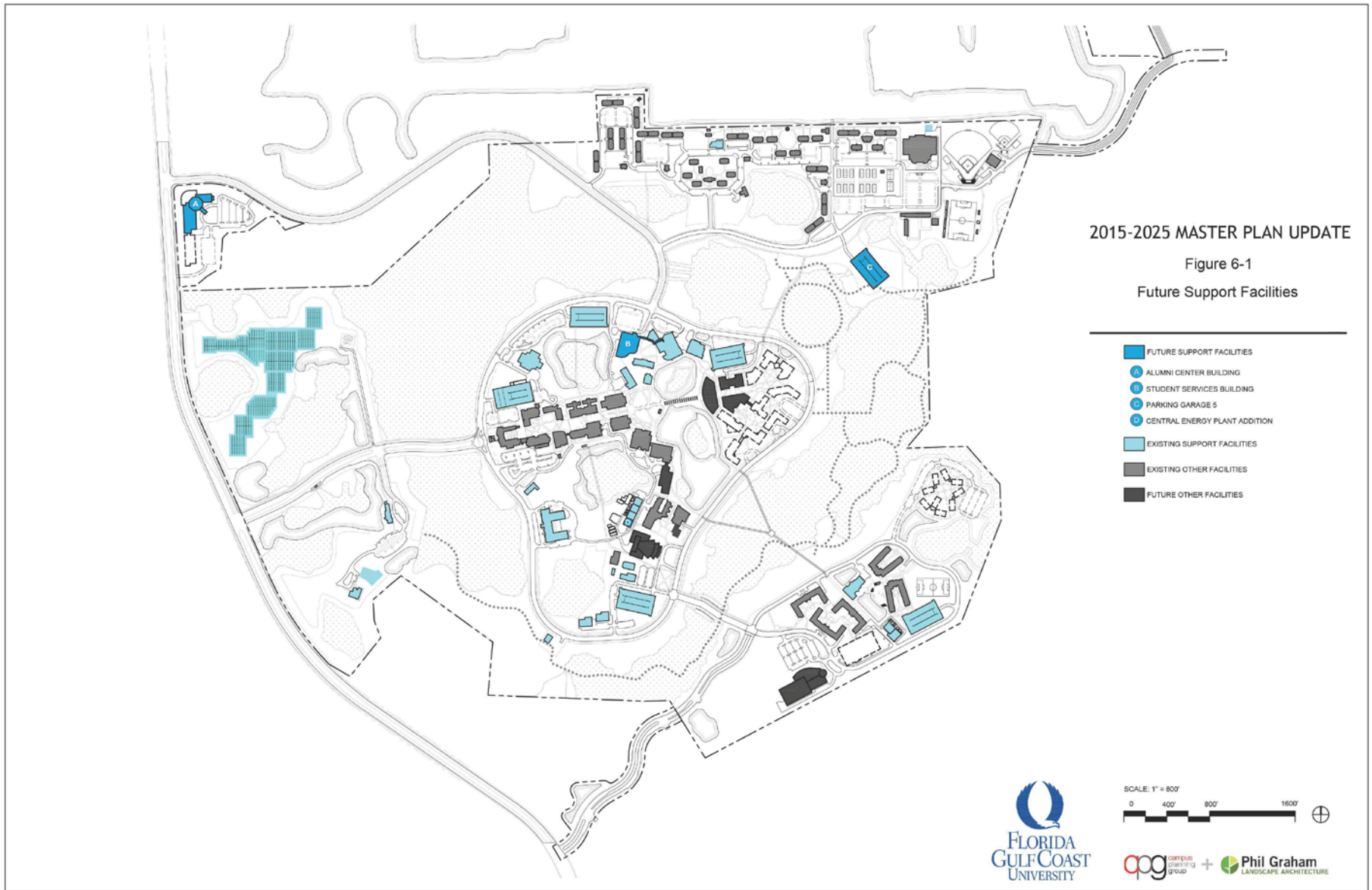
- EXISTING FACILITY
- PROPOSED FACILITIES
- ACADEMIC / MIXED USE
  - Core Academic
  - Research
  - Administrative Support
  - Specialized Uses
  - Public Open Space
  - Dining
  - Parking
  - Energy / Utilities
  - Acreage: Total 123.6
- CONSERVATION AREAS
  - Acreage: Total 370.4
- HOUSING / MIXED-USE
  - Student Housing
  - Recreational Open Space
  - Dining
  - Parking
  - Energy / Utilities
  - Acreage: Total 72
- ATHLETICS / RECREATION
  - Acreage: Total 73.9
- SPECIALIZED SUPPORT
  - Acreage: Total 19.8
- LAND BANK & UNDERDEVELOPED LAND
  - Acreage: Total 92.6
- WATER FEATURE
  - Acreage: Total 35.5
- DETENTION AREA
  - Acreage: Total 19



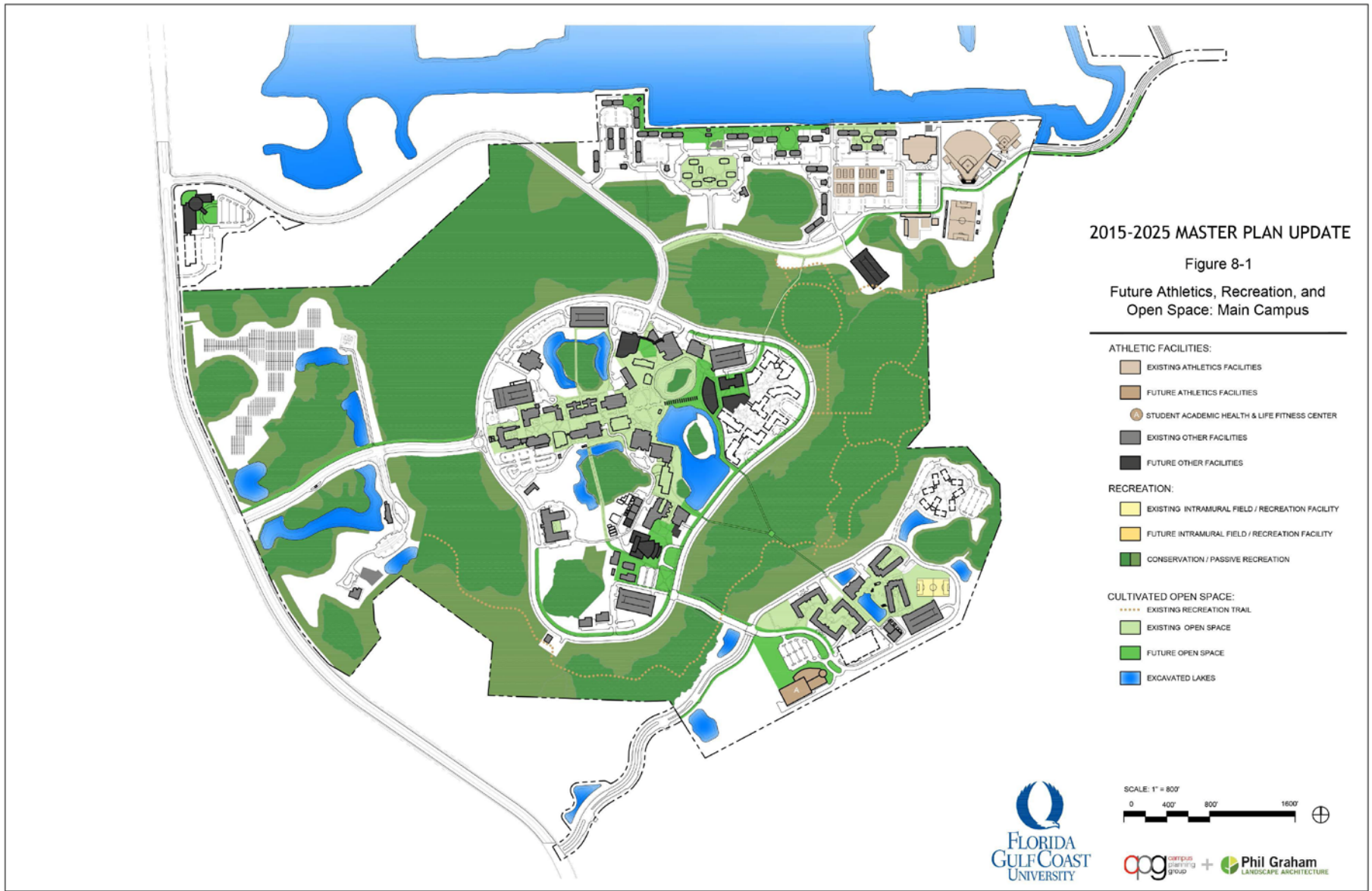


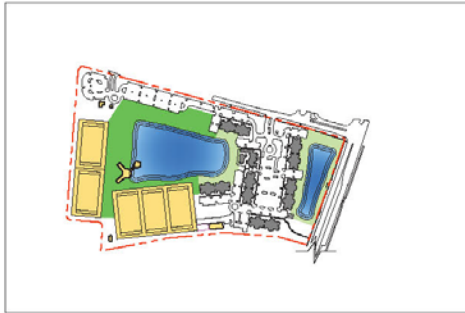




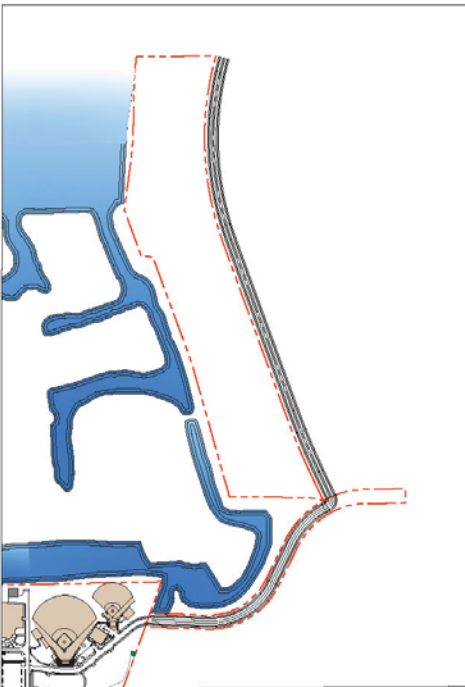








1 West Lake Village District

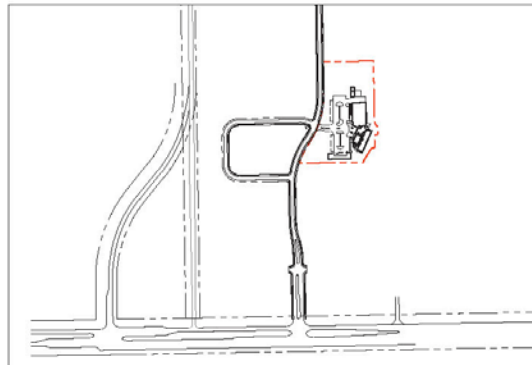


2 East Lake District



FGCU Campus And Outparcels

SCALE: NTS



3 Emergent Technologies Institute (ETI)



## 2015-2025 MASTER PLAN UPDATE

Figure 8-2

### Future Athletics, Recreation, and Open Space: FGCU Outparcels

#### ATHLETIC FACILITIES:

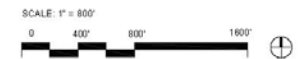
- EXISTING ATHLETIC FACILITIES
- FUTURE ATHLETIC FACILITIES

#### RECREATION:

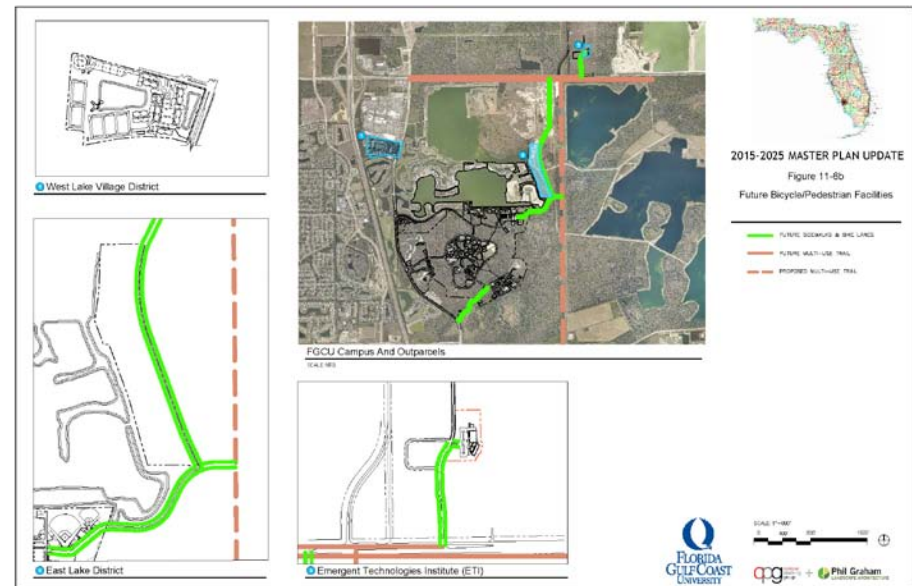
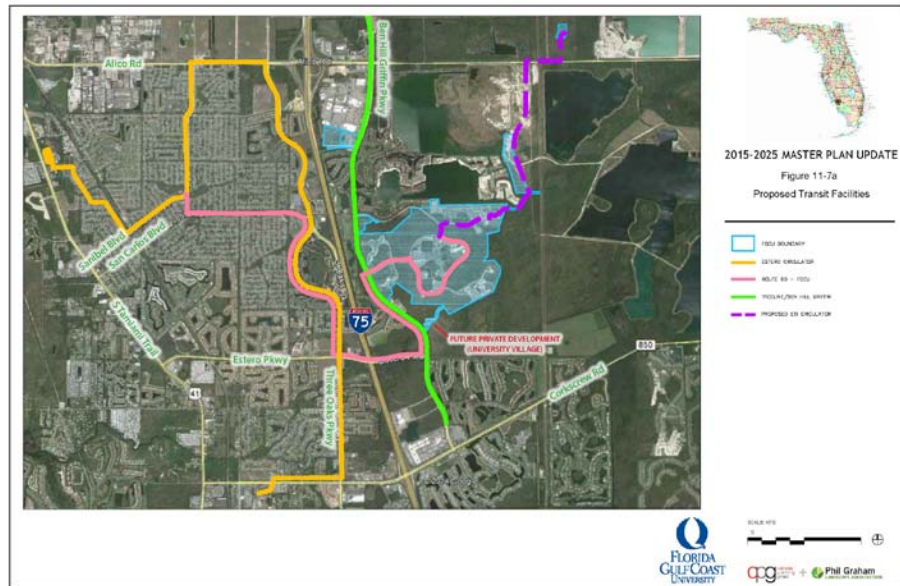
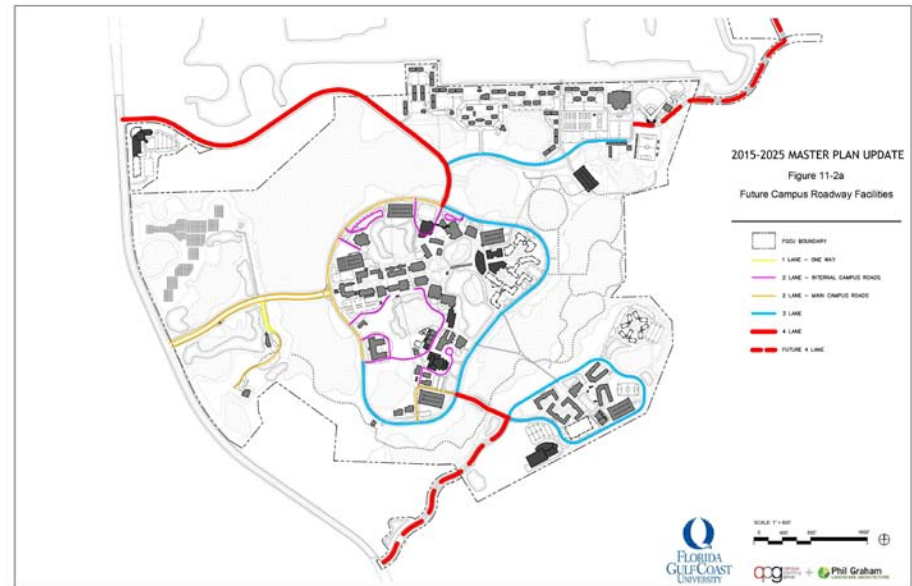
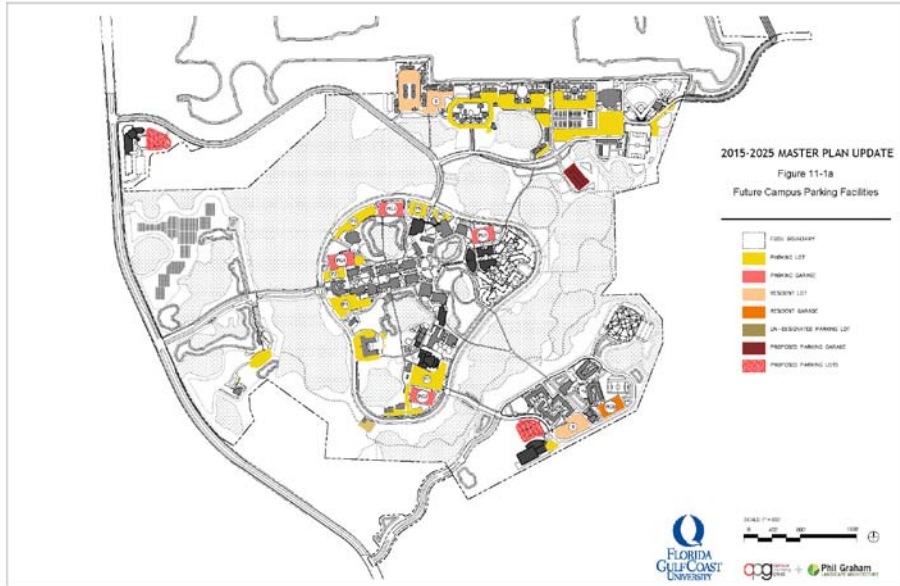
- EXISTING INTRAMURAL FIELD / RECREATION FACILITY
- FUTURE INTRAMURAL FIELD / RECREATION FACILITY
- \*\*\*\*\* EXISTING RECREATION TRAIL

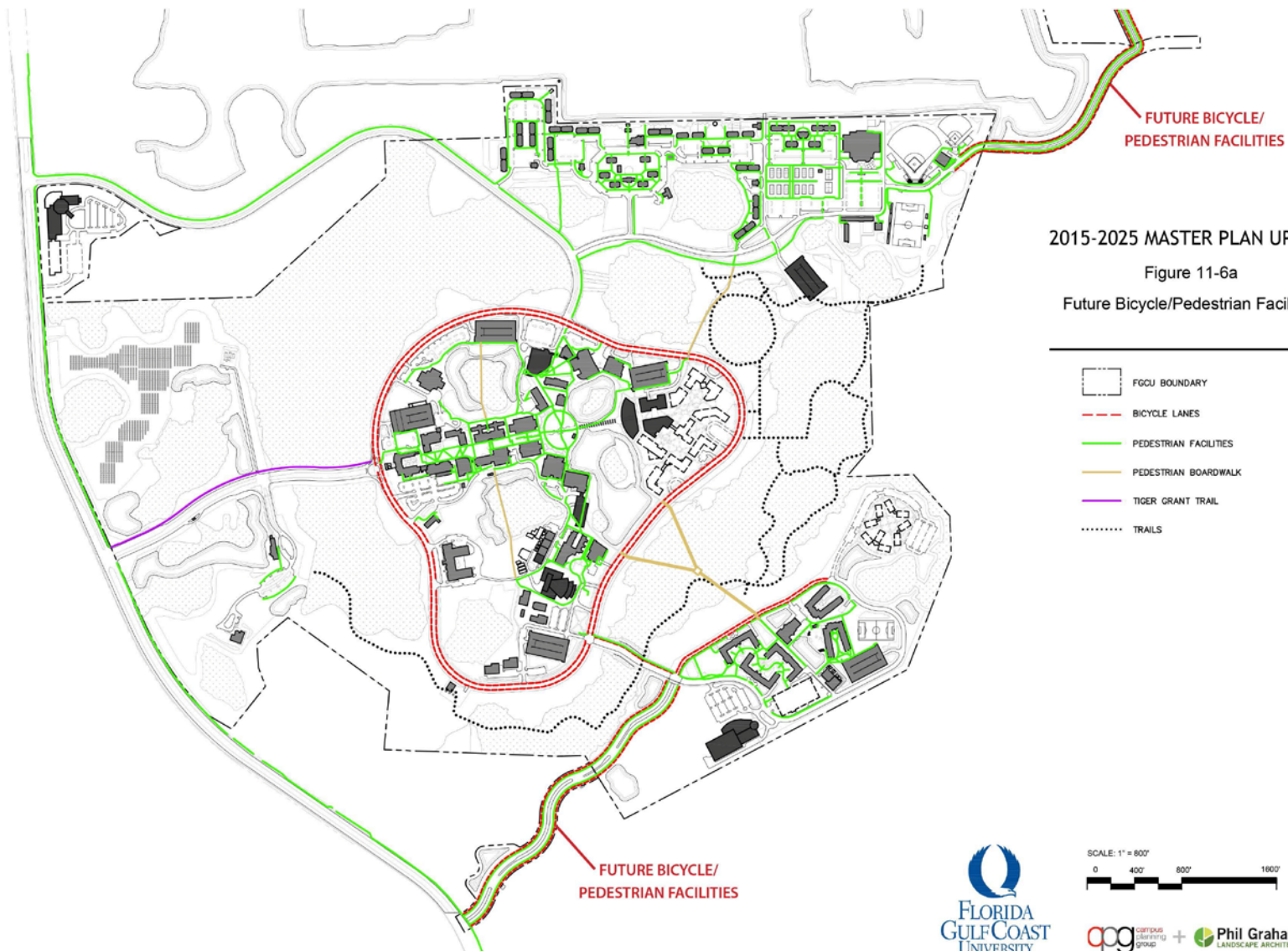
#### CULTIVATED OPEN SPACE:

- EXISTING OPEN SPACE
- FUTURE OPEN SPACE
- EXCAVATED LAKES

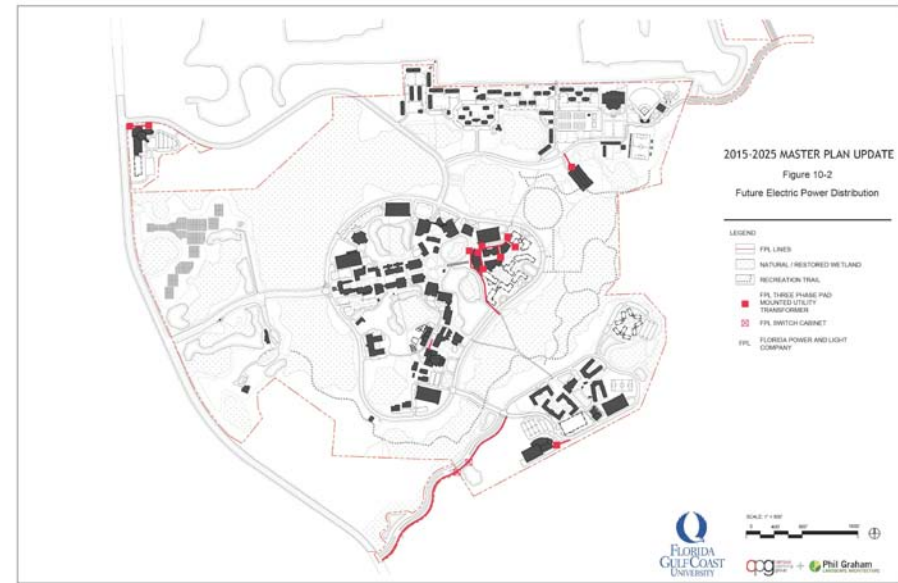
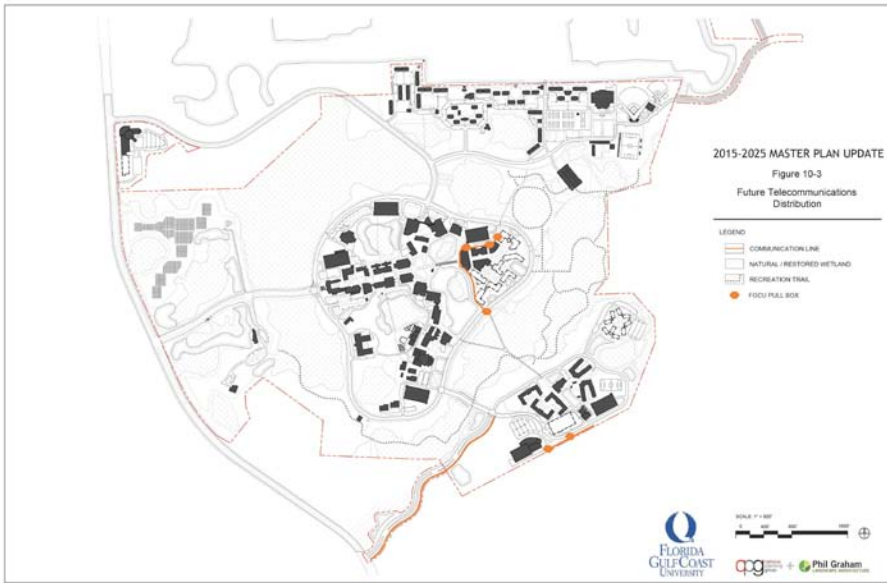
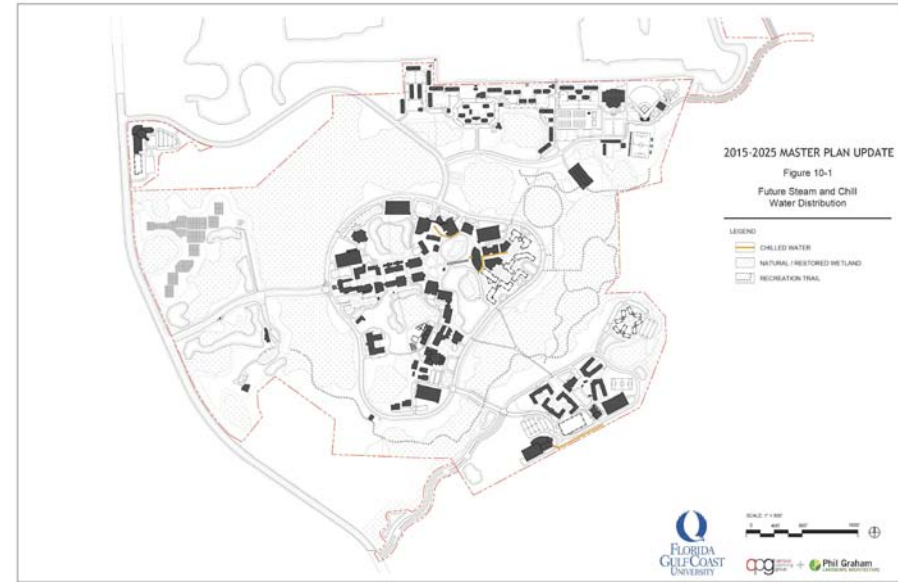
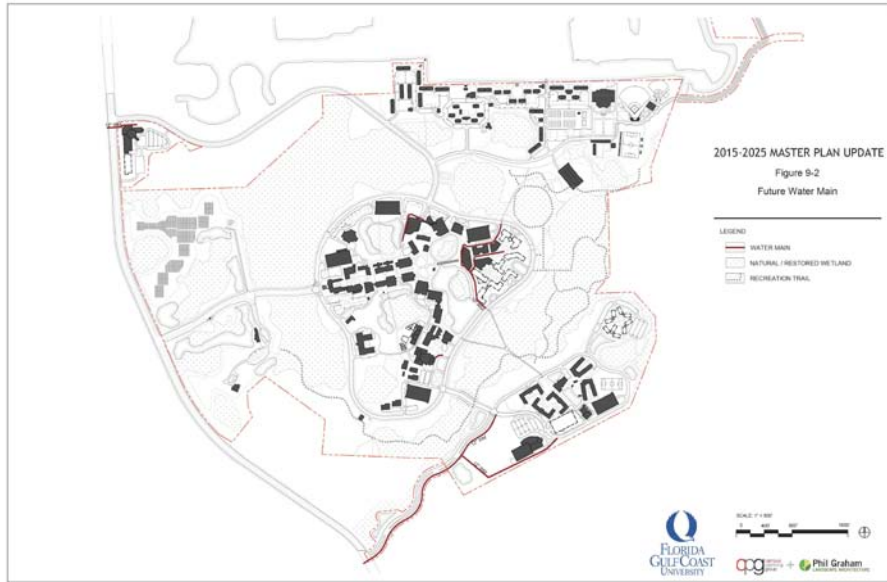




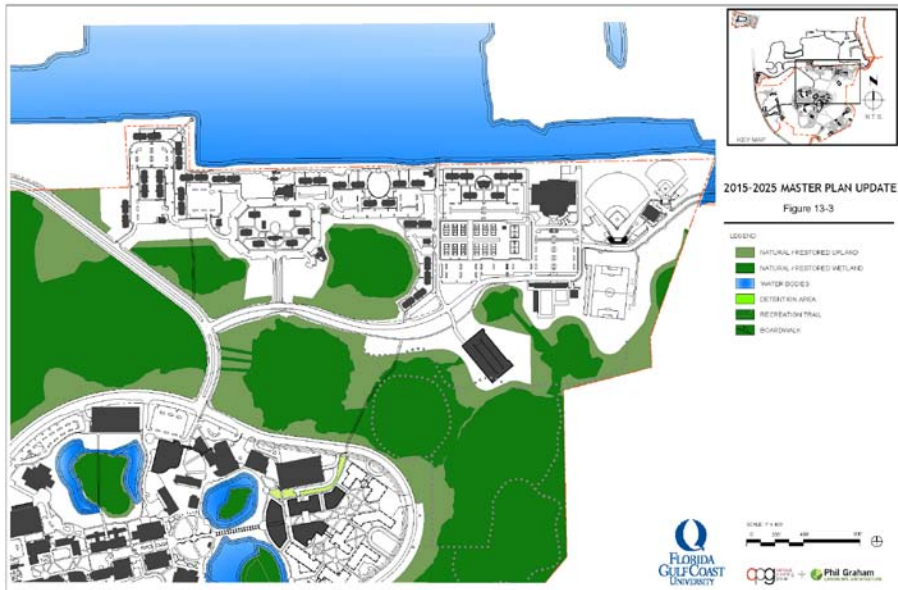
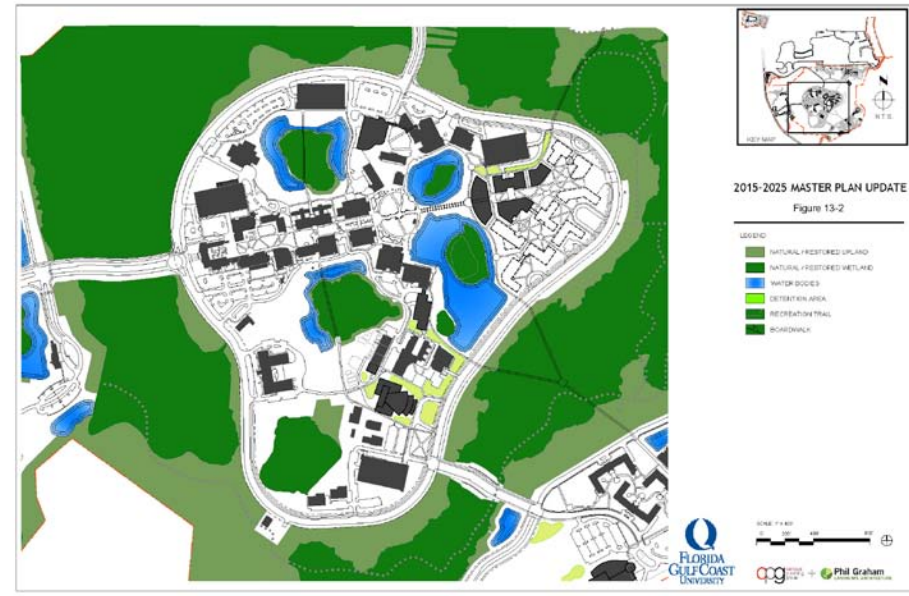
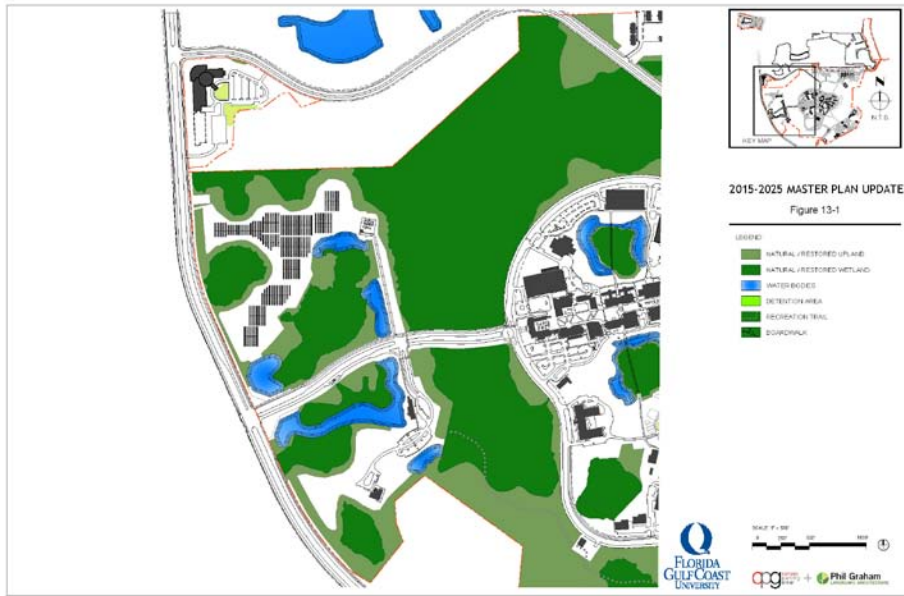




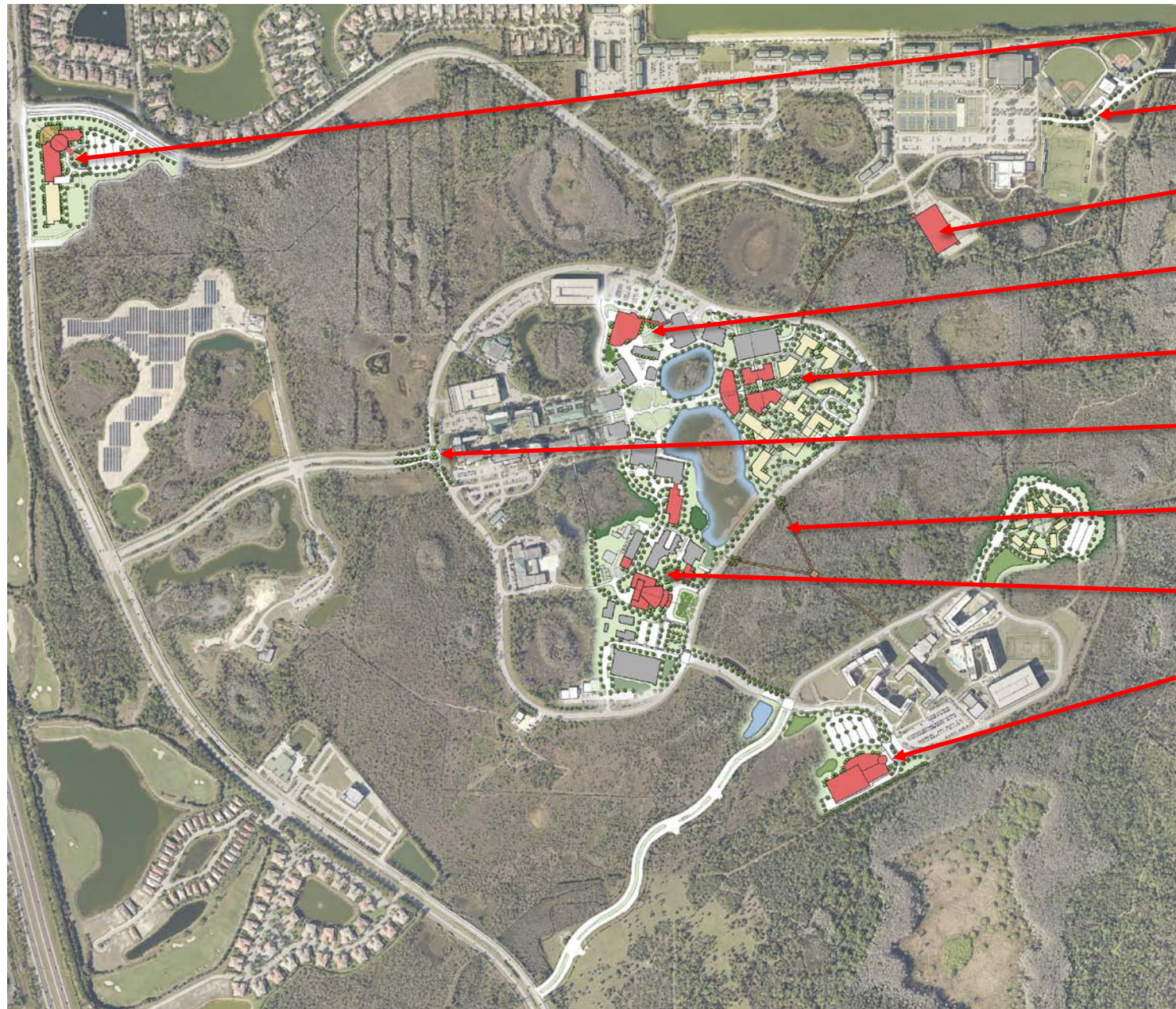












- Alumni Center
- North Access Road
- Special Events Deck
- Student Services
- East Academic
- Main Entry Circle
- Boardwalk
- Fine Arts
- Student Academic Health and Life Fitness Center

### Legend

- Near Term Development
- Long Term Development
- Conservation Area
- Existing Facilities
- Shade Tree
- Sabal Palm





2015-2025 MASTER PLAN UPDATE

Figure 1-1  
Illustrative Master Plan





# Questions / Discussion



THANK YOU