



**Yes 20/20**  
Keep Conserving Lee

**Conservation 20/20 Support**  
**August 8, 2016**  
**Estero Bay Agency on Bay Management**

Presented by:

Marisa Carrozzo & Brad Cornell

Coalition members of **Yes On Conservation 20/20**

# Who We Are

**Yes On Conservation 20/20** is a coalition of local citizens and organizations working to support the passage of the Lee County Conservation 20/20 referendum on November 8<sup>th</sup>, 2016

## Current Coalition Members

- Audubon of Southwest Florida
- Audubon of the Western Everglades
- BikeWalkLee
- Caloosa Saddle Club
- Cape Coral Friends of Wildlife
- Charlotte Harbor National Estuary Program
- Conservancy of Southwest Florida
- CREW Land and Water Trust
- "Ding" Darling Wildlife Society
- Estero Council of Community Leaders
- Lakes Park Enrichment Foundation
- Responsible Growth Management Coalition, Inc.
- Sanibel-Captiva Conservation Foundation
- Sierra Club, Calusa Group
- The Trust for Public Land



*Galt Preserve*



# 2016 Referendum

Lee County BOCC voted to place 20/20 on 2016 ballot in a non-binding referendum (original ballot measure was also non-binding)

## Exhibit "A"

### Conservation 20/20 Non-Binding Referendum

DO YOU APPROVE OF LEE COUNTY CONTINUING TO USE GENERAL REVENUE FUNDS TO ACQUIRE, RESTORE, IMPROVE, AND MANAGE LAND FOR CONSERVATION, SURFACE WATER MANAGEMENT, WATER QUALITY, WATER RECHARGE AND SUPPLY, FLOOD CONTROL, WILDLIFE HABITAT, PASSIVE PUBLIC RECREATION, AND OPEN SPACE PURPOSES, PURSUANT TO LEE COUNTY ORDINANCE 15-08 (COMMONLY KNOWN AS THE LEE COUNTY CONSERVATION 20/20 LAND PROGRAM)?

YES-For

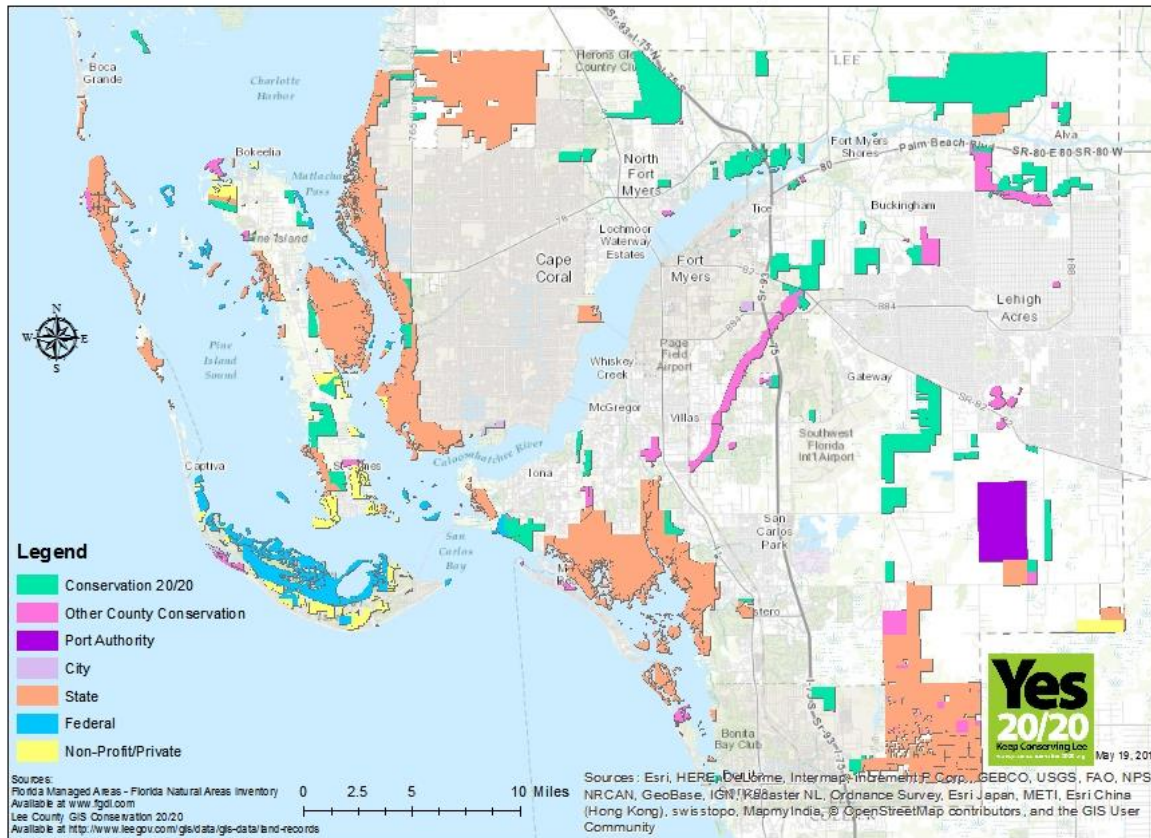
NO-Against

*Ballot language adopted by the BOCC on May 17, 2016*



# Conservation 20/20 Background

Lee County Conservation Lands by Owner



- Willing-seller conservation land acquisition and stewardship program
- Acquired 24,930 acres throughout Lee County

Great progress, but:  
Lee County is **39** of **67**  
Florida counties in total  
conservation lands, and  
**61** of **67** in acres  
conserved per person\*

## Celebrating 20-year anniversary

\*2014 Florida Natural Areas Inventory



# Outstanding Conservation Needs

Current and future nominations in DR/GR and CREW: aquifer recharge, flood storage, wildlife habitat and wetland preservation/restoration

Avenue for future acquisition of Edison Farms: 4,000 acres, mostly wetlands, headwaters of tribs to Estero Bay



Example: Current Nom #536 – 579 acres south of Corkscrew Rd. adjacent to Corkscrew Swamp Sanctuary



**Yes  
20/20**

# Vote YES 20/20



*Photo from Crew Land & Water Trust*

**On November 8<sup>th</sup>,  
2016 vote YES for:**

- ✓ Clean water
- ✓ Quality of life
- ✓ Outdoor recreation
- ✓ Wildlife habitat
- ✓ Tourism

Visit [www.yesonconservation2020.org](http://www.yesonconservation2020.org) for more information and ways to get involved! Visit and like us on Facebook at [www.facebook.com/YesOnConservation2020](https://www.facebook.com/YesOnConservation2020) to follow our activities



# Outreach



## Yes20/20

### Keep Conserving Lee

**On November 8, 2016  
Vote YES for:**

- ✓ Quality of life
- ✓ Clean water
- ✓ Outdoor recreation
- ✓ Wildlife habitat
- ✓ Tourism

**Conservation 20/20 is Lee County's successful conservation lands program.**

Conservation 20/20 lands provide vital quality of life, environmental and economic benefits by helping to protect waterways and drinking water supplies, preserving wildlife habitat and offering recreational opportunities for residents and visitors.



## Yes 20/20

Keep Conserving Lee

**Learn more about Conservation 20/20!**  
[www.YesOnConservation2020.org](http://www.YesOnConservation2020.org)  
Add  us on Facebook  
[www.facebook.com/YesOnConservation2020](https://www.facebook.com/YesOnConservation2020)

Political advertisement approved by the YES ON CONSERVATION 20/20 Political Committee.

VOTE YES ON CONSERVATION 20/20 • NOVEMBER 8, 2016

### Frequently Asked Questions

**Q: How long has the program been in existence?**

**A:** 20 years, since 1996

**Q: How much land has been purchased to date?**

**A:** 24,930 acres as of May 21, 2016

**Q: How is the program funded?**

**A:** The program is funded using millage-based taxes listed on Lee County tax bills as "Lee County General Revenue"

**Q: Is this a tax increase?**

**A:** No. The Conservation 20/20 ballot referendum has no direct impact one way or the other on the County's millage rate. One "mill" is a \$1 tax for every \$1,000 of taxable property value, and the General Fund millage rate has been 4.1506 since 2008. Voting "Yes" will not increase this millage rate, and voting "No" will not decrease this millage rate – but a "No" vote will likely end the Conservation 20/20 program. Conservation 20/20 is a part of the County's General Revenue Fund, and the General Fund millage rate is either maintained or adjusted by the Board of County Commissioners on an annual basis, based on the overall needs of the County. Please see Lee County Ordinance #15-08 or visit [www.yesonconservation2020.org](http://www.yesonconservation2020.org) for more information on how 20/20 is funded.

**Q: How much is currently in the Conservation 20/20 acquisition fund to purchase more land?**

**A:** Approximately \$89 million

**Q: How will the properties be maintained in perpetuity?**

**A:** Management and restoration funds are allocated on a yearly basis through Lee County's continuation budget, using a five-year projection. Unused funds are rolled over to the next year's budget.

**Q: How much does Conservation 20/20 currently spend on annual maintenance?**

**A:** Currently, approximately \$4 million is budgeted annually to restore and maintain 20/20 preserves, inclusive of staff, administrative and equipment costs.

**Q: Does the County need to keep buying conservation land?**

**A:** Yes. Conservation land is essential to balance continued growth – in order to ensure there is enough drinking water supplies and other natural resources to support future generations, and our great quality of life. Examples of needed conservation lands include: Corkscrew Regional Ecosystem Watershed (CREW) Project finished; Edison Farms (4,000 acres); coastal and beach lands; areas within Lehigh Acres, Cape Coral, and the Islands; Density Reduction/Groundwater Resource Areas in Lee County and Bonita Springs, Alva and North Fort Myers.

**Q: Where did the name Conservation 20/20 come from?**

**A:** It was a slogan developed during the original campaign to signify 20/20 hindsight and 20/20 future vision – to learn from past decisions that resulted in Lee County having the lowest percentage of conservation lands on the Gulf Coast and moving into the future with a clear vision to balance growth with conservation.

**Q: What is a nonbinding referendum?**

**A:** A nonbinding referendum is a poll to understand the will of the voters. The original referendum, passed in 1996, was also nonbinding, and the Board of County Commissioners continued the program annually on that basis.

**Q: What can I do to help?**


**A:** Consider donating to Yes On Conservation 20/20 or volunteer your time to help us get the message out! Visit [www.yesonconservation2020.org](http://www.yesonconservation2020.org) for more information.

## Yes 20/20

Keep Conserving Lee

**Learn more about Conservation 20/20!**

[www.YesOnConservation2020.org](http://www.YesOnConservation2020.org)

Add  us on Facebook

[www.facebook.com/YesOnConservation2020](https://www.facebook.com/YesOnConservation2020)

# Keep Conserving Lee Vote Yes on 20/20

[www.yesonconservation2020.org](http://www.yesonconservation2020.org)



# Resolutions Passed Supporting 20/20

VILLAGE OF ESTERO, FLORIDA

RESOLUTION NO. 2016 - 14

A RESOLUTION OF THE VILLAGE COUNCIL OF THE VILLAGE OF ESTERO, FLORIDA, STATING SUPPORT FOR PASSAGE BY THE VOTERS OF ESTERO AND LEE COUNTY OF THE REFERENDUM ITEM FOR CONSERVATION 20/20 WITH A "YES" VOTE IN THE NOVEMBER 2016 GENERAL ELECTION AND ENCOURAGING SIMILAR SUPPORT OF CONSERVATION 20/20 BY OTHER MUNICIPALITIES, ORGANIZATIONS, AND VOTERS; AND PROVIDING AN EFFECTIVE DATE.

WHEREAS, Lee County's successful Conservation 20/20 program is a willing-seller environmental land acquisition and stewardship program dedicated to preserving ecosystems for their natural resource value and providing environmentally compatible recreation opportunities for current and future generations; and

WHEREAS, the Conservation 20/20 land acquisition and stewardship program has acquired 24,930 acres in the past 20 years, since the program began in 1996; and

WHEREAS, conservation lands provide quality of life and environmental and economic benefits – such as protecting water resources, drinking water supplies and wildlife habitat, in addition to offering ecotourism and nature recreational opportunities for residents and visitors; and

WHEREAS, outdoor recreation and tourism are two of Lee County's most significant industries; with tourism having a 2.99 billion dollar economic impact in 2015; and

WHEREAS, a "clean, unspoiled environment" is considered one of the top five reasons tourists choose to visit Lee County; and

WHEREAS, it is in the best interest of the current and future citizens of the Village of Estero and Lee County that Conservation 20/20 continue in order to protect the natural resources of Lee County by continuing to acquire, improve, restore and manage environmentally significant lands; and

WHEREAS, Lee County and the Village of Estero have benefited from land conservation, management, and restoration programs funded through the Conservation 20/20 program; and

WHEREAS, the continued acquisition, management, and restoration of natural systems, and the enhancement of public access or recreational enjoyment of conservation lands should be a priority for Lee County; and

- ✓ Town of Fort Myers Beach
- ✓ Village of Estero
- ✓ City of Bonita Springs
- ✓ City of Sanibel
- City of Cape Coral (Pending August 8, 2016)
- City of Fort Myers (TBA)



# Get Involved

- Become a coalition member
- Endorse a Yes vote on Conservation 20/20
- Donate
- Volunteer time for: event tabling, handing out flyers, distributing flyers to local businesses, etc.
- Help schedule speakers for events and meetings



## Endorse Voting “Yes” on Lee County’s Conservation 20/20 Referendum

I, or my organization who authorizes me, am pleased to endorse a “Yes” vote on the Lee County Conservation 20/20 Referendum on November 8, 2016.

**Please provide your information for Endorsements (if reverse form not used):**

Name and Title: \_\_\_\_\_

Organization: \_\_\_\_\_

Address: \_\_\_\_\_

City: \_\_\_\_\_ State: \_\_\_\_\_ Zip: \_\_\_\_\_

Email: \_\_\_\_\_ Phone: \_\_\_\_\_

☐ You have my/the organization’s permission to use this endorsement (name and endorsement statement only) on the Yes On Conservation 20/20 campaign website and other advertising and public promotions (please check box).

\_\_\_\_\_  
Signature

\_\_\_\_\_  
Date

**Please submit completed/signed form (and contributions, if any) by mail to:**

**YES 20/20**  
PETER CANGIALOSI, Treasurer  
13586 SAN GEORGIO DR  
ESTERO FL 33928

⌘ For more information, or if you would like to volunteer or offer other assistance, please contact Don Doggett at [DWDoggett@yahoo.com](mailto:DWDoggett@yahoo.com)

Contributions are not tax deductible for federal tax income purposes. Political advertisement paid for and approved by the YES ON CONSERVATION 20/20 Political Committee.



# Yes 20/20

Keep Conserving Lee

## Thank you

Some coalition contacts:

Marisa Carrozzo: [marisac@conservancy.org](mailto:marisac@conservancy.org)

Brad Cornell: [bcornell@audubonwe.org](mailto:bcornell@audubonwe.org)

Pete Cangialosi: [pcangialosi@comcast.net](mailto:pcangialosi@comcast.net)

Coalition e-mail and website:

[yesonconservation2020@gmail.com](mailto:yesonconservation2020@gmail.com)

[www.yesonconservation2020.org](http://www.yesonconservation2020.org)