

# SWFRPC Brownfields Update

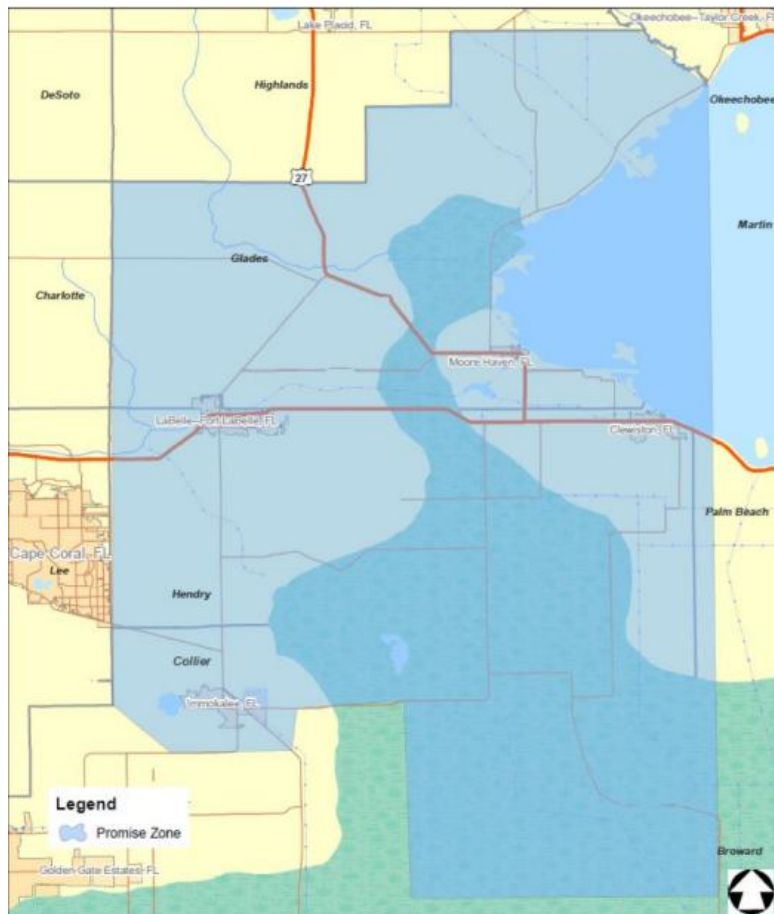
Tara Szydowski & John Griffin

# Overview

- Summary of 2018 Coalition Assessment Grant
- Summary of 2022 Community-wide Assessment Grant
- Looking Ahead



# 2018 Coalition Assessment Grant



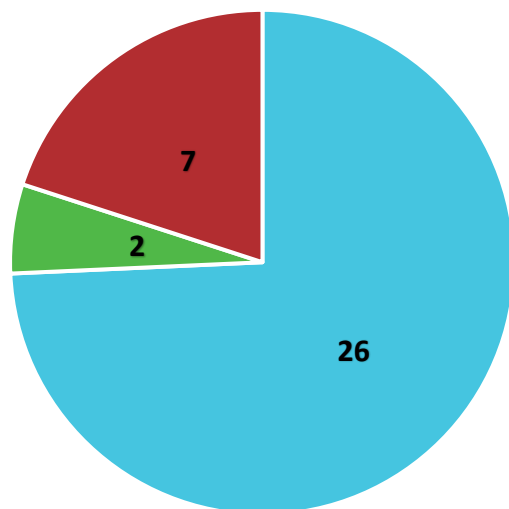
- Awarded to the Southwest Florida Brownfields Coalition (SWFBC)
  - Lead member was SWFRPC
  - Collier, Glades, and Hendry
  - 130 acres of land assessed



# 2018 Coalition Assessment Grant

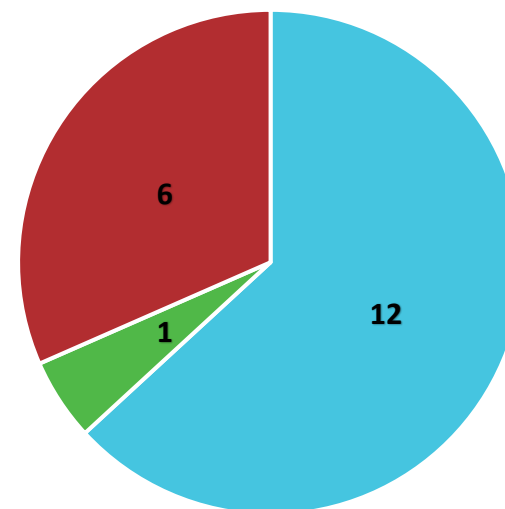
- \$600,000 awarded to Southwest Florida Brownfield Coalition

Projects



■ Glades ■ Hendry ■ Collier

Properties Assessed



■ Glades ■ Hendry ■ Collier

# Completed Activities

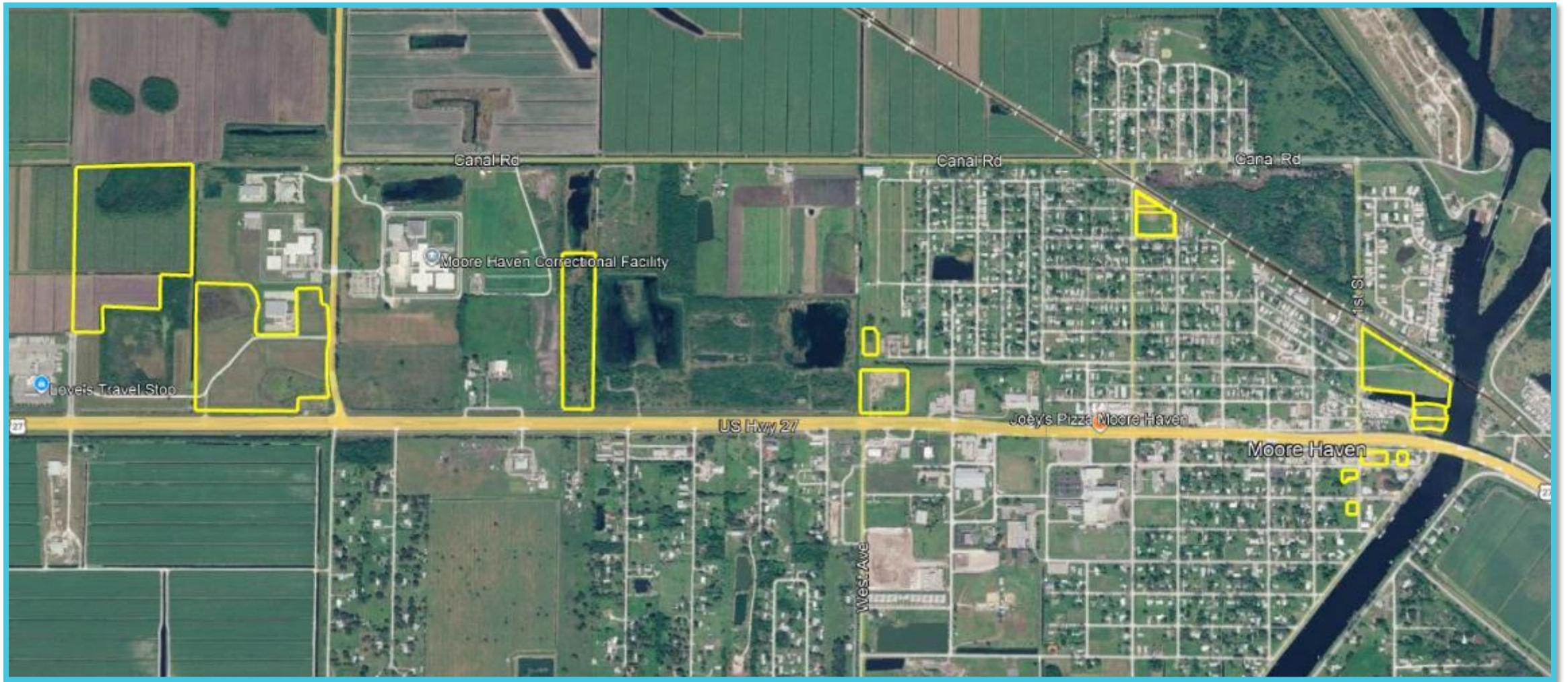
## Reports:

- 1 Program QA Plan
- 19 Phase I ESAs
- 14 Site-Specific QA Plans
- 14 Phase II ESAs
- 5 Cleanup Plans
- 2 Wetland Reports
- 1 Asbestos Survey
- Closeout Report

## Outreach/Other:

- Community Involvement Plan
- Brownfield Webpage
- Public Outreach events: Moore Haven City Council, Immokalee CRA meeting, Hendry County BOCC meeting
- Informative brochure

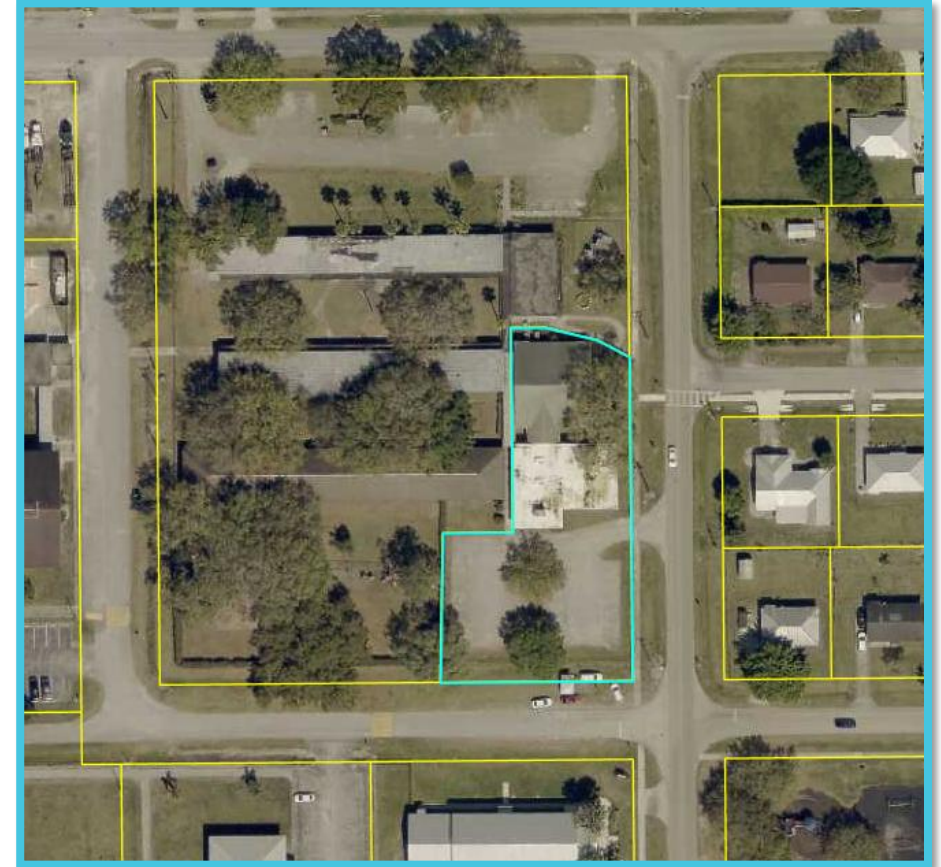
# Glades County Sites



# Collier County



# Hendry County



# 2022 Community-wide Assessment Grant

- Target Area: Moore Haven, FL
- 2026 - EPA approved work outside of Target Area
- 6 months left
- Assessing a property under this grant does **NOT** disqualify you from future brownfield incentives or grants



# Completed Activities



## Reports

- 1 Program QA Plan
- 2 Phase I ESAs
- 2 Phase II ESAs
- 2 Site-Specific QA Plans
- 1 Cleanup Plan

## Outreach/ Other

- Community Involvement Plan
- 2 Community Outreach Meetings
- Updated Brochure
- Updated Inventory

# Current Phase I ESA Assessments



Collier County



Glades County

# Current Planning Activities

- **SWFRPC Regional Strategy Plan: Brownfields reuse planning strategy for the six counties, including:**
  - Up to 14 focus areas identification and prioritization (Two each per county, minimum)
  - Integration of redevelopment and climate-risk data
  - CRA resources, Opportunity Zone data, GIS parcel & boundary data
  - Completion by mid-April with goal of identifying high priority areawide plan or plans for completion by grant completion date.

# Pending Planning Activities

- **Moore Haven Marina Revitalization Plan:** Reuse planning for brownfields parcels in Moore Haven.
  - Site Eligibility Determinations required from EPA
  - Project includes:
    - Comprehensive site analysis and evaluation matrix documenting opportunities, constraints, and redevelopment compatibility for brownfield properties within the 45-acre study area.
    - Robust community and stakeholder engagement, including a Story Map, stakeholder meeting, and public open house to gather input that shapes redevelopment priorities.
    - Two conceptual revitalization sketch plans illustrating land-use concepts, programming features, connectivity, and design character for the study area.
    - Draft Preferred Revitalization Plan integrating public/City feedback, redevelopment strategies, infrastructure needs, and 3D visualization graphics.
    - Final Revitalization Plan document consolidating all analysis, input, and vision plans

# Upcoming Activities

- Outreach Forum – April 22, 2026
- Additional assessments
- Building off of current planning activities
- Closeout Reporting – September 2026



# Looking Ahead



- Brownfield grants jump-start revitalization.
- Planning documents are practical tools, not shelf items.
- They work together to attract additional funding, partners, and redevelopment opportunities.
- The Regional Plan benefits all 6 counties.
- Assessing a property now does not disqualify it for future brownfield opportunities.
- Leverage incentives like Voluntary Cleanup Tax Credits



# Tierracon



Explore with us

# Thank you!

**Tara Szydowski**

Florida Division Brownfields Manager

D 813-321-0346

M 215-278-1977

[Tara.Szydowski@terracon.com](mailto:Tara.Szydowski@terracon.com)

**John Griffin, PLA, ASLA**

Senior Project Manager

D 623-244-3611

M 480-275-0378

[John.Griffin@terracon.com](mailto:John.Griffin@terracon.com)