



KICK-OFF MEETING AGENDA

September 14, 2020

10:00am – 11:00am

This meeting is to discuss and share ideas and feedback on an evacuation study update funded by the Florida Department of Emergency Management. It is also an introduction of the new Disaster Recovery Coordinator for SW Florida funded by the Economic Development Administration for 2 years. An introductory overview of both programs will be provided, and we will be looking for their input to ensure that both projects will be a benefit to the recovery and future of our region.

1 INTRODUCTIONS

2 EVACUATION STUDY

3 SHELTER UPDATES

4 EDA COVID-19 RECOVERY PROGRAM

a) Background

b) Introduction of Mr. Jim Burch, Disaster Recovery Coordinator

c) IMPACT Partners Speaker: Anthony Jewett, Ed.L.D.

d) IMPLAN Speaker: Dr. Amir B. Ferreira Neto, PhD

e) Proposed Outreach

f) Input/ Comments

5 CLOSING COMMENTS



Statewide Regional Evacuation Study Program (SRES)

2020 – 21 Update

2020-21 Program Overview

- \$1.2 Million Legislative Appropriation to the FDEM Agency Budget
- Interagency Agreement with Northeast Florida Regional Council (NEFRC) to manage the funding and update
- Includes two RFP's and sub-contracts with the 10 Regional Planning Councils
- Four Major Tasks to be completed
- This funding expires on June 30, 2021



Steering Committee

Working through the Division of Emergency Management on the formation of a Steering Committee to help guide the update

Seeking input from the users of the Study – what information is most valuable, how should it look and feel, how to access the information

Currently have three + members from each region, nearly 40 EM staff volunteering to participate

Will allow the Study to reflect the needs of the EM community – virtual meetings will be scheduled



2020 SRES Tasks - Behavioral Analysis

- Request for Proposals (RFP) released for a new behavioral analysis
- Will not be based on telephone surveys like previous study, but will use cell phone data collected during past evacuations
- Consultant in place by October
- Analysis and Coordination to take place between October – March
- Data will be input into the TIME model as one component used to determine evacuation clearance times and shelter demand



2020 SRES Tasks – Shelter Inventory

- Review Statewide Shelter Plan from FDEM with the Region
- Ensure all shelters in the Region are accurately reflected
- Data will be input into the TIME model as one component used to determine clearance times.



Collier County Shelters

- **BARRON COLLIER HIGH- 5600 Cougar Dr, Naples, FL 34109**
- **NAPLES HIGH- 5600 Cougar Dr, Naples, FL 34109**
- GULF COAST HIGH-7878 Shark Way, Naples, FL 34119
- CORKSCREW MIDDLE-1165 County Rd 858, Naples, FL 34120
- OAKRIDGE MIDDLE- 14975 Collier Blvd, Naples, FL 34119
- GOLDEN GATE HIGH- 2925 Titan Way, Naples, FL 34116
- GOLDEN GATE MIDDLE- 2701 48th Terrace SW, Naples, FL 34116
- PALMETTO RIDGE HIGH (Special Needs Shelter)- 1655 Victory Ln, Naples, FL 34120
- LELY HIGH- 1 Lely High School Blvd, Naples, FL 34113
- Sabal Palm Elementary- 4095 18th Ave NE, Naples, FL 34120
- BIG CYPRESS ELEMENTARY- 3250 Golden Gate Blvd W, Naples, FL 34120
- Cypress Palm Middle- 4255 18th Ave NE, Naples, FL 34120
- LAUREL OAK ELEMENTARY- 7800 Immokalee Rd, Naples, FL 34119
- VINEYARDS ELEMENTARY- 6225 Arbor Blvd W, Naples, FL 34119
- Golden Terrace Intermediate- 2711 44th Terrace SW, Naples, FL 34116
- Parkside Elementary- 5322 Texas Ave, Naples, FL 34113
- Golden Gate intermediate- 4911 20th Pl SW, Naples, FL 34116
- PELICAN MARSH ELEMENTARY- 9480 Airport-Pulling Rd, Naples, FL 34109
- **NORTH NAPLES MIDDLE-16165 Learning Ln, Naples, FL 34110**
- Lake Trafford ES- 3500 Lake Trafford Rd. Immokalee
- Highlands ES- 1101 Lake Trafford Rd. Immokalee
- Pinecrest ES- 313 9th St S. Immokalee
- Immokalee MS- 401 9th St. Immokalee
- Immokalee HS- 701 Immokalee
- Bethune Education Center- 614 S 5th St. Immokalee
- Immokalee Technical Center- 508 N 9th St. Immokalee
- Immokalee Friendship House- 602 W Main St. Immokalee
- Village Oaks ES- 1601 SR 29. Immokalee
- Eden Park ES- 3650 Westclox. Immokalee



Lee County Shelters

- Bonita Springs YMCA- 27200 Kent Road. Bonita Springs, FL 34135
- Hertz Arena- 11000 Everblades Parkway. Estero, FL 33928
- Dunbar High School- 3800 Edison Avenue. Fort Myers, FL 33916
- Island Coast High School- 2125 DeNavarra Pkwy. Cape Coral, FL 33909
- Manatee Elementary- 5301 Tice Street. Fort Myers, FL 33905
- Estero Recreation Center- 9200 Corkscrew Palms Blvd. Estero, FL 33928
- Florida Gulf Coast University Alico Arena- 12181 FGCU Lake Pkwy E Fort Myers, FL 33913
- N. Fort Myers Academy of the Arts- 1856 Arts Way. North Fort Myers, FL 33917
- Oak Hammock Middle School- 5321 Tice Street. Fort Myers, FL 33905
- South Fort Myers High School- 14020 Plantation Road. Fort Myers, FL 33912
- Treeline Elementary School- 10900 Treeline Ave. Fort Myers, FL 33913
- Varsity Lakes Middle School- 801 Gunnery Road North. Lehigh Acres, FL 33971
- Harns Marsh Middle School- 1820 Unice Avenue N. Lehigh Acres, FL 33971
- Harns Marsh ES- 1800 Unice Avenue N. Lehigh Acres
- Sunshine ES- 601 Sara Ave N. Lehigh Acres
- Mirror Lakes ES- 525 Charwood Ave S. Lehigh Acres
- YMCA- E Terry Ave. Bonita Springs
- North Ft. Myers Recreation Center- 2000 N Recreation Park Way. N. Ft. Myers
- Tortuga Preserve ES- 1711 Gunnery Rd N. Lehigh Acres
- East Lee County HS- 715 Thomas Sherwin Ave S. Lehigh Acres
- **Veterans Park Rec Center- 55 Homestead Rd S. Lehigh Acres**



Hendry County Shelters

- Pioneer Community Center-910 Panama Ave, Clewiston, FL 33440
- West Glades Elementary School-2586 State Hwy 731, LaBelle, FL 33935
- LaBelle High School-4050 E Cowboy Way, LaBelle, FL 33935
- LaBelle MS- 8000 E Cowboy Way. LaBelle
- Edward A Upthegrove ES- 280 N Main St. LaBelle
- Clewiston MS- 601 W Osceola. Clewiston
- Clewiston HS- 1501 S Francisco St. Clewiston
- Hendry County Health Department- 1140 Pratt Blvd. LaBelle
- Country Oaks ES- 2025 NW Eucalyptus Blvd. LaBelle



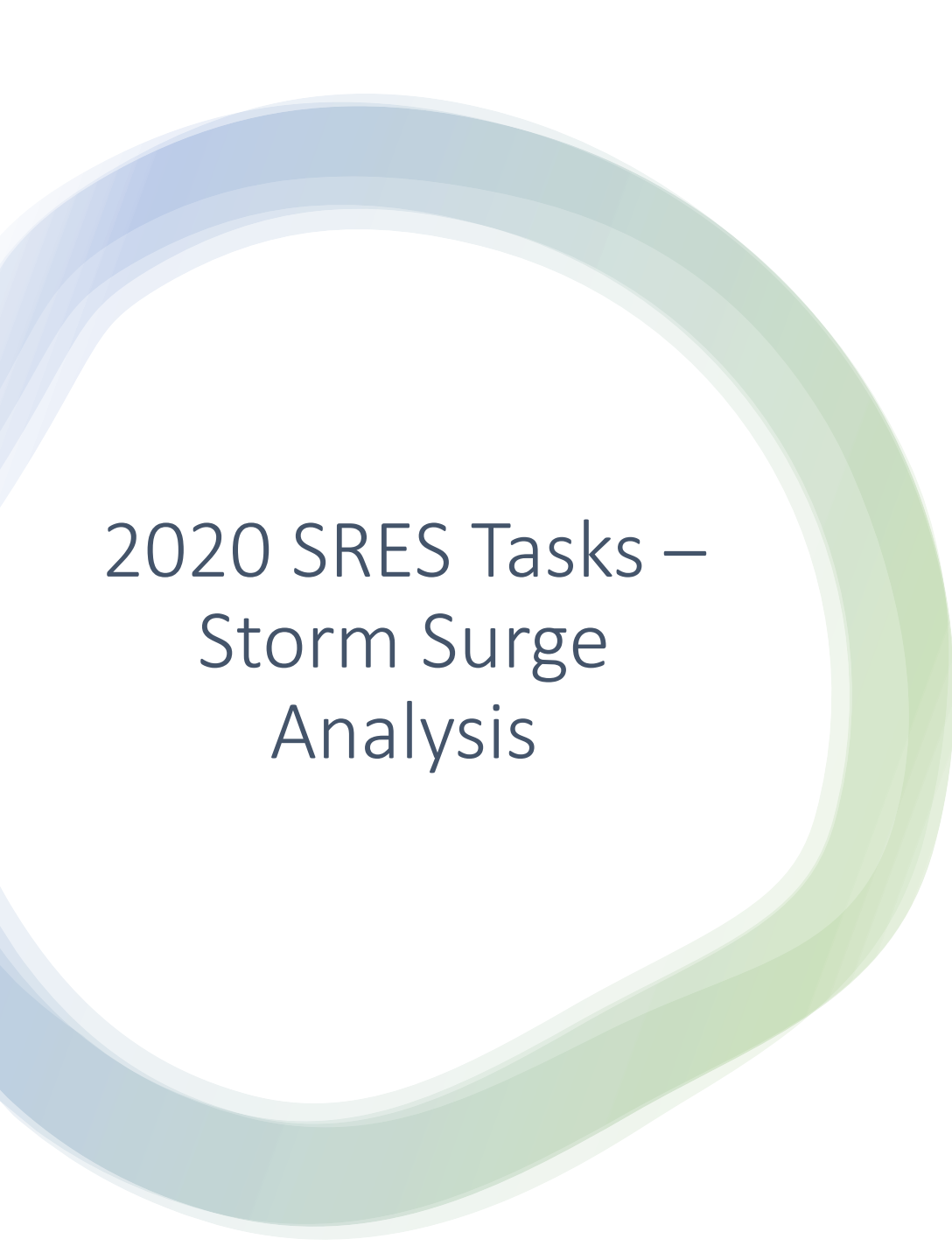
Glades County Shelters

- Moore Haven High School Gym (Animal Shelter)- 700 Terrier Pride Drive SW, MH 500
- Glades County Health Department- 1021 Health Park Drive, MH (Backup)
- American Legion- Moore Haven. 1034 Baker's HWY 40
- Doyle Conner Building- Moore Haven. 900 US HWY 27 SW 500
- Lakeport Community Center- 1239 Red Barn Road
- Moore Haven Elementary School- 401 Terrier Pride Drive 250
- Palmdale Community Center- 483 Main Street
- Ortona Community Center- 2130 Ortona Locks Rd. Moore Haven
- Buckhead Ridge V.F.W.- 29012 E SR 78. Buckhead Ridge
- West Glades ES- 2586 Hwy 731. LaBelle
- Muse Community Center- 3897 Loblolly Bay Rd. LaBelle
- Washington Park Community Center- 1225 Latum Bell St. Moore Haven
- Maple Grove Baptist Church- 12777 SR 78. Moore Haven



Sarasota County Shelters

- Brookside Middle School- 3636 S. Shade Ave., Sarasota
- Southside Elementary School- 1901 Webber St., Sarasota
- Riverview High School- 1 Ram Way, Sarasota
- Phillippi Shores Elementary- 4747 S. Tamiami Trail, Sarasota
- North Port High School- 6400 W. Price Blvd., North Port
- Heron Creek Middle School- 6501 W. Price Blvd., North Port
- Woodland Middle School- 2700 Panacea Blvd., North Port
- Booker HS- 3201 N Orange Ave. Sarasota
- Booker MS- 2250 Myrtle St. Sarasota
- Tuttle ES- 2863 8th St. Sarasota
- Gulf Gate ES- 6500 S Lockwood Ridge Rd. Sarasota
- Atwater ES- 4701 Huntsville Ave. North Port
- Ashton ES- 5110 Ashton Rd. Sarasota
- Lakeview ES- 7299 Proctor Rd. Sarasota
- Gocio ES- 3450 Gocio Rd. Sarasota
- Tatum Ridge ES- 4100 Tatum Rd. Sarasota
- Suncoast Polytechnical HS- 4650 Beneva Rd. Sarasota
- Wilkinson ES- 3400 Wilkinson Rd. Sarasota
- State College of Florida - Lakewood Ranch- 7131 Professional Pkwy E. Sarasota
- Fruitville ES- 601 Honore Ave. Sarasota

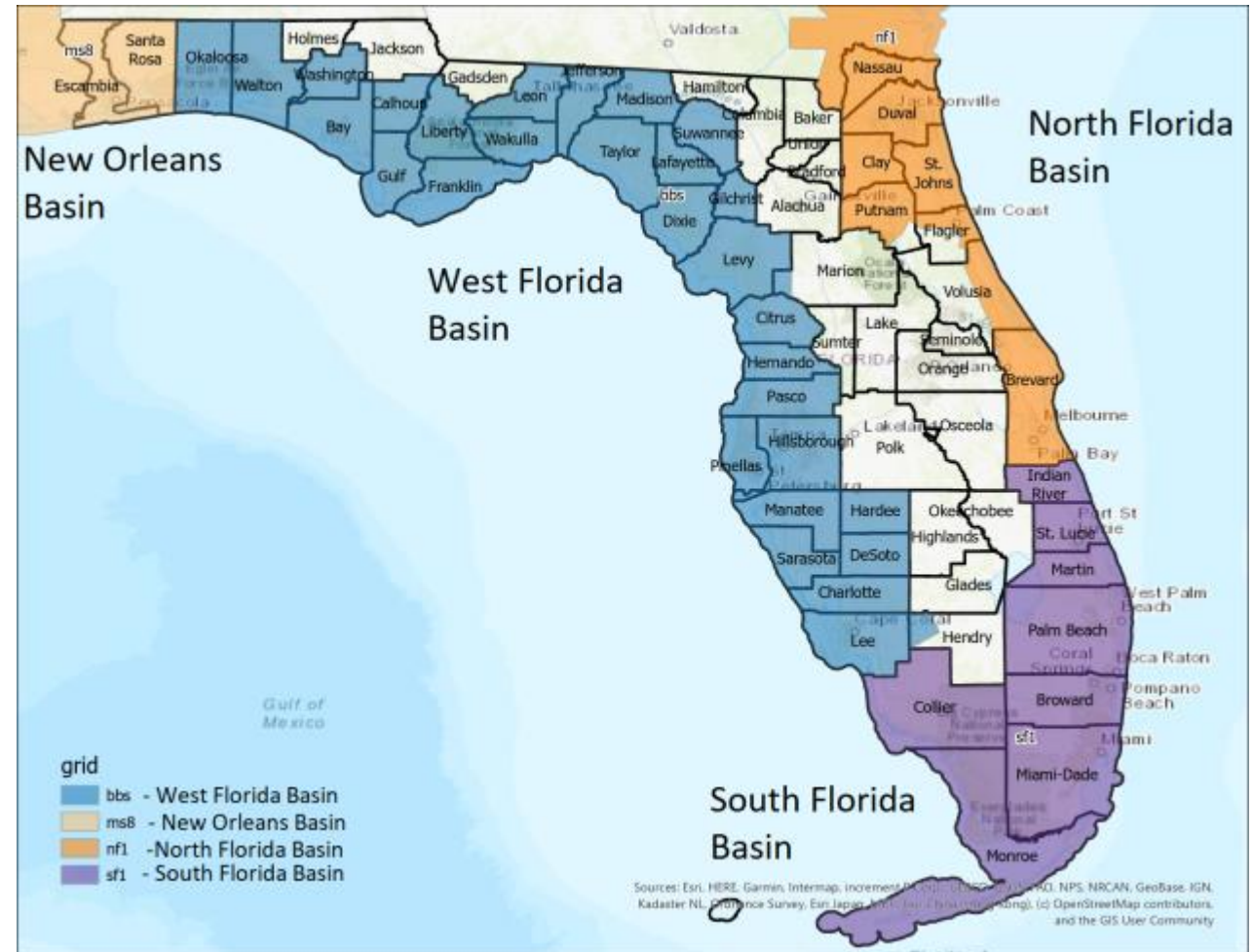


2020 SRES Tasks – Storm Surge Analysis

- Use updated SLOSH Basins from the National Hurricane Center
- Using LiDAR (elevation data) process the SLOSH data into Storm Surge Zones.
- Provide to County EMs for the update of evacuation zones if necessary.
- Include evacuation zones in TIME as one component to determine clearance times.

All New Basins Since 2016

- Panhandle gains basin from Mississippi
- West Florida Basin(BBS) covers most of west Florida
- North Florida Basin (NF1) covers northeast half of Florida and southern Georgia
- South Florida Basin (SF1) has reduced county coverage since 2016 introduction



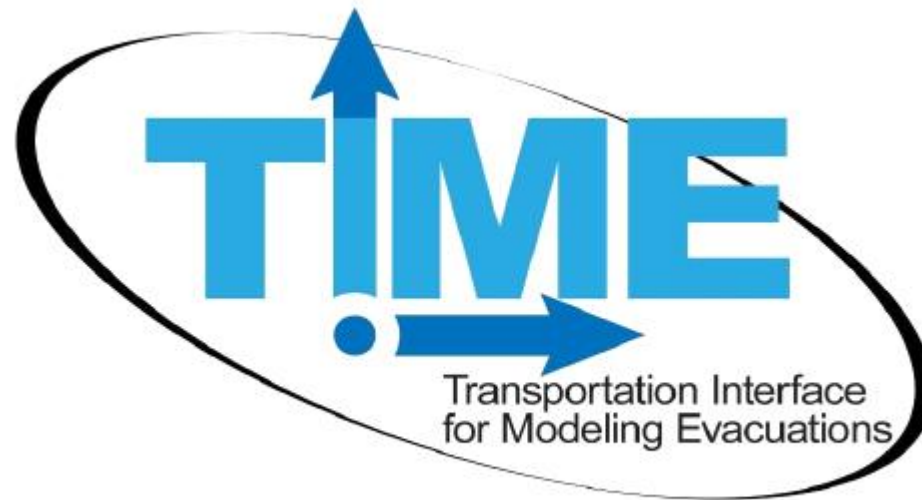



2020 SRES Tasks - Population & Demographic Update

- Update population information for 2020 and 2025 using best available data – American Community Survey for 2019 or Census 2020.
- Data will be input into the TIME model as one component used to determine evacuation clearance times
- Coordination meetings will take place to review and validate the data within each Region.

Population Risk Analysis

- Demographics needed to tie into evacuating populations with transportation
- Calculate shelter demand
- Consume transportation networks and calculate clearance times
- Develop Operational Scenarios for customized evacuation parameters





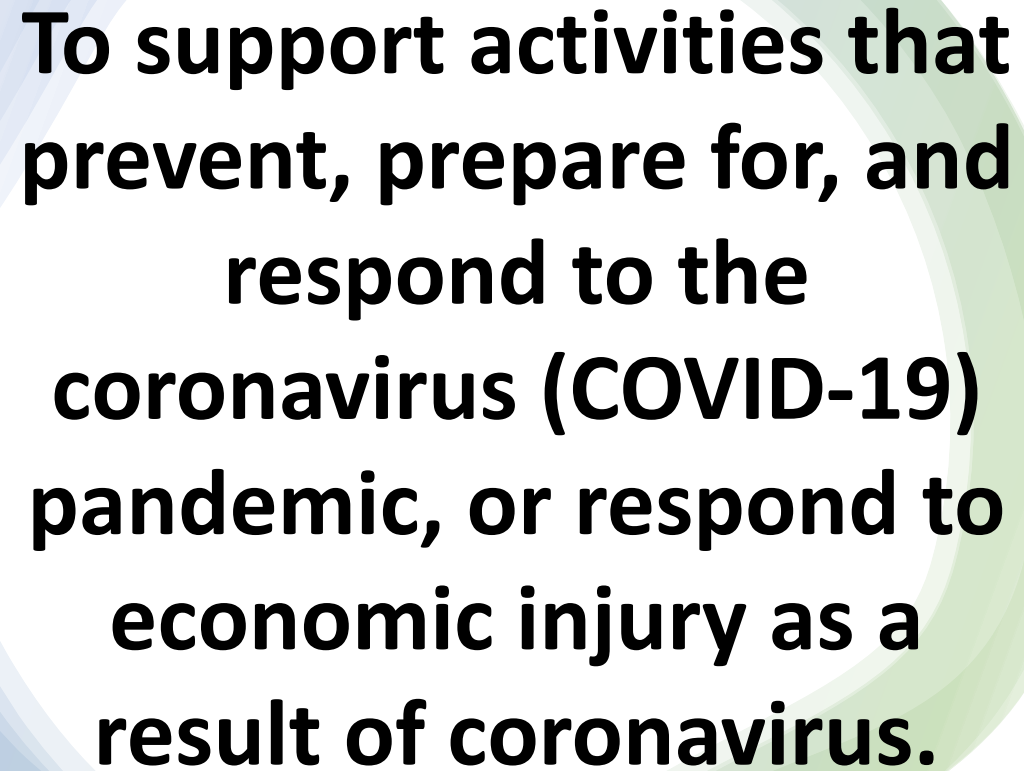
Timeline for the 2020-21 Funding

- Kick off Meetings to be held in each Region – by September 15
- Consultant Chosen for the Behavioral Analysis – October 1
- New Storm Surge Mapping – November
- Coordination for shelter, population and behavioral tasks - ongoing
- Deadline for Evacuation Zone changes – January 2021
- Final draft of updated Behavioral Analysis – March 2021



EDA CARES Act Recovery & Resiliency

July 1, 2020 – June 30, 2022



To support activities that prevent, prepare for, and respond to the coronavirus (COVID-19) pandemic, or respond to economic injury as a result of coronavirus.

- Non-Competitive - invitation only program
- \$400,000 for two years
- Hire a Regional Disaster Economic Recovery Coordinator
- Provide technical assistance and capacity building for communities, businesses, and other stakeholders in the Region impacted by COVID-19.
- Focused outreach to Black-owned businesses and communities of color to determine the impacts of the coronavirus on this segment of business ownership.



Project Team


- Margaret Wuerstle: Project Oversight & Coordination; Grant writing
- Rebekah Harp: Communications Coordinator, Graphics, GIS and REMI
- Katelyn Kubasik: Community Planner- Project Management/Organization
- James Burch: Disaster Economic Recovery Coordinator – Project Design, Public Engagement, Resiliency Plan Coordination
- Dr. Anthony Jewett: Consultant for Outreach to Communities of Color; development of policy and program recommendations
- Dr. Amir B. Ferreira Neto, PhD: FGCU Researcher conducting next phase of the IMPLAN economic impact study
- Jarly Moya: VISTA Volunteer, Assistant to Mr. Burch and Dr. Jewett



Regional Disaster Economic Recovery Coordinator:

Mr. James Burch

- Serve the communities, local governments, and businesses as a liaison to identify potential resiliency, mitigation, and economic recovery projects;
- Implement economic recovery and resiliency plans with the goal of rebuilding resilient and sustainable communities;
- Assist in local, state and federal recovery planning efforts in the most impacted communities;
- Help identify economic development grant-eligible projects to ensure impacted communities take full advantage of funding opportunities;
- Facilitate locally generated disaster recovery economic development projects consistent with our CEDS.



SW Florida IMPACT Partners, LLP:

Dr. Anthony Jewett

- Focused outreach to Black-owned businesses and communities of color to ensure recovery and resilience for the full regional economy in Southwest Florida.
- Focus groups with impacted small business owners across each of the six counties in Southwest Florida;
- One Regional Survey;
- Targeted data gathering/informational interviews by phone in each county with key stakeholders in economic development and small business support function and with representative leaders, leadership groups or trade organizations within the Opportunity Zones using a standardized question protocol;
- Discrete policy, programmatic and technical assistance recommendations that can be incorporated into the regional Comprehensive Economic Development Strategy.



IMPLAN:

***Dr. Amir B. Ferreira
Neto, PhD***

Impact of Covid-19 in Southwest Florida

Amir B. Ferreira Neto

Assistant Professor of Economics | Interim Director, RERI
Lutgert College of Business, FGCU

Tracking Covid-19 impact in SWFL

- Multi-part project originated in a request from Lee EDO and the Horizon Council
- The first part: establish an initial survey of area businesses, ASAP
- The second part: follow-up surveys
- The third part: conduct a more in-depth economic impact

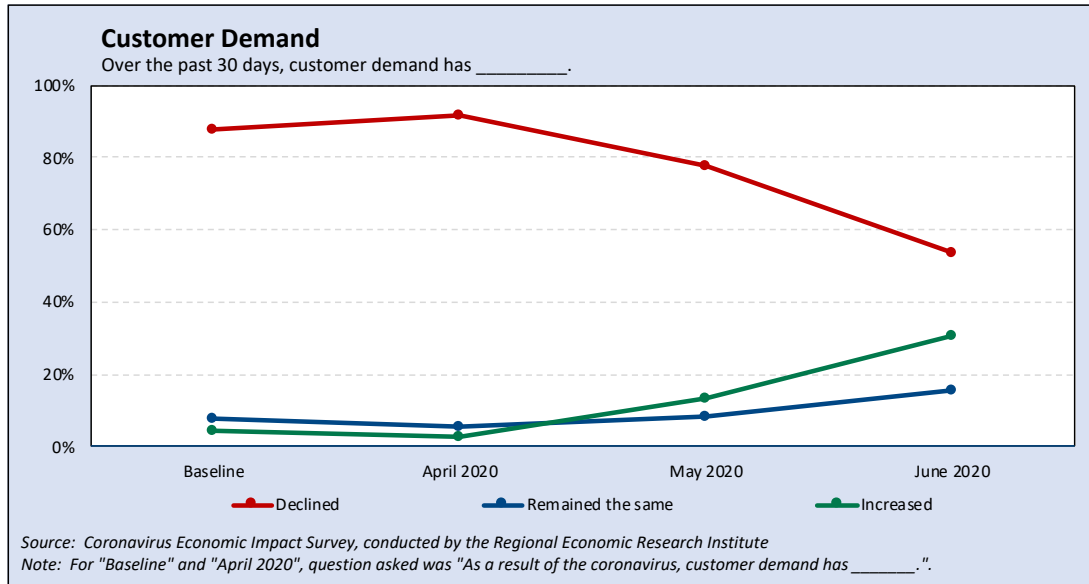
Part 1 – Baseline

- Benchmark questions:
 - Consumer Demand
 - Sales Revenue
 - Employment – work-at-home, lay-off, reduced hours
 - Expectations
- Additional Questions
 - Supply chain, exposure, plans and characteristics

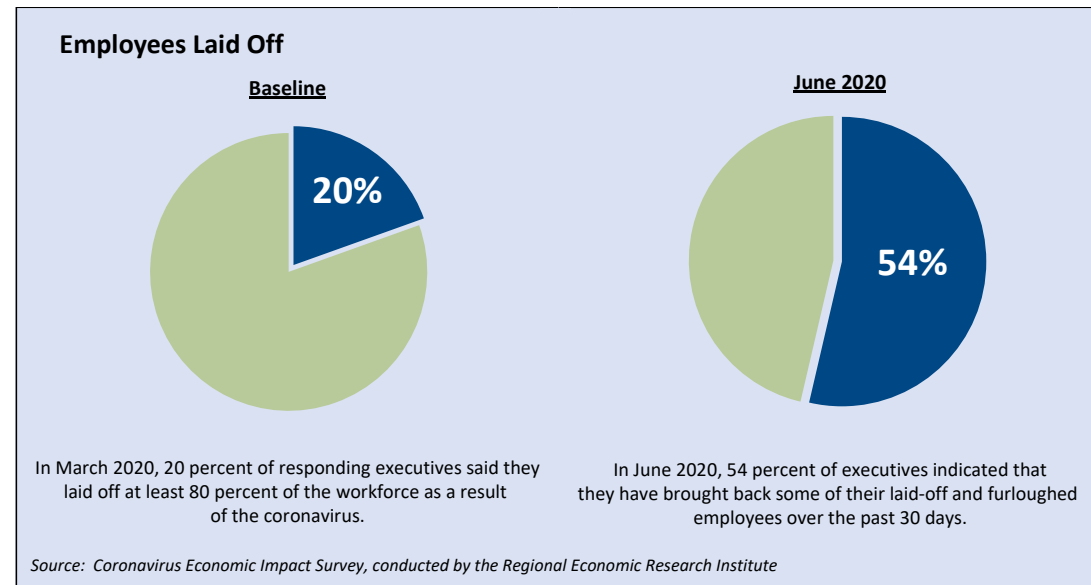
Part 2 – Follow up

- Benchmark Questions
- Additional Questions
 - Follow up 1: Supply chain, loan programs and characteristics
 - Follow up 2: Supply chain, safety, lockdown support, and characteristics
 - Follow up 3: Characteristics

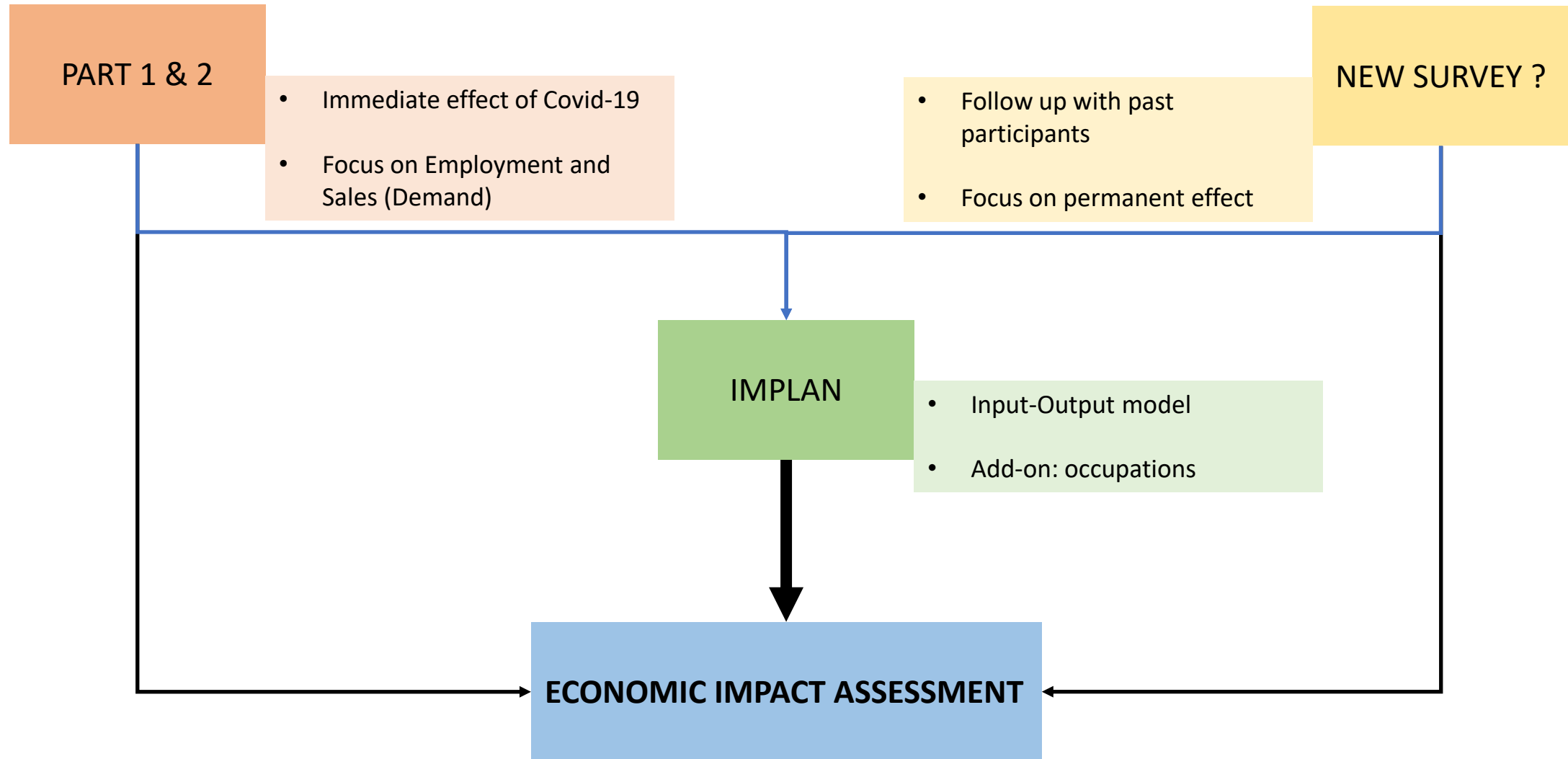
Some results



- **Baseline:** Voluntary quarantine
- **April 2020:** Stay-at-home order
- **May 2020:** Phase 1 of re-opening
- **June 2020:** Expansion of phase 1



Part 3 – Taking a step further




Thank you!

Amir B. Ferreira Neto, PhD

(239) 590-7370

aborgesferreiraneto@fgcu.edu

<http://www.fgcu.edu/cob/reri/>



Technical Assistance & Capacity Building

- Assist in local, state, and federally led coronavirus recovery planning efforts among the most highly impacted communities;
- Help identify economic development grant-eligible projects with state and federal resources for locally impacted communities to ensure these entities take full advantage of available funding opportunities;
- Serve as a liaison between local, state, and federal partners to speed the recovery process through strategic technical assistance for the highly impacted communities within the organization's jurisdiction; and
- Facilitate the implementation of locally generated disaster recovery economic development projects developed as part of the CEDS or CEDS-aligned economic recovery and resilience plan;

Dealing with Impacts from COVID-19 Resources for Southwest Florida

FEDERAL & STATE GUIDANCE

- **U.S. Small Business Administration: Coronavirus (COVID-19): Small Business Guidance & Loan Resources** – Health and government officials are working together to maintain the safety, security, and health of the American people. Small businesses are encouraged to do their part to keep their employees, customers, and themselves healthy.
<https://www.sba.gov/page/coronavirus-covid-19-small-business-guidance-loan-resources>
- **Center for Disease Control and Prevention, Interim Guidance for Businesses and Employers** – The following interim guidance may help prevent workplace exposures to acute respiratory illnesses, including COVID-19, in non-healthcare settings. The guidance also provides planning considerations if there are more widespread outbreaks of COVID-19.
<https://www.cdc.gov/coronavirus/2019-ncov/community/guidance-business-response.html>
- **U.S. Department of Labor: Guidance on Preparing Workplaces for COVID-19** – This guidance is intended for planning purposes. Employers and workers should use this planning guidance to help identify risk levels in workplace settings and to determine any appropriate control measures to implement. Additional guidance may be needed as COVID-19 outbreak conditions change, including as new information about the virus, its transmission, and impacts, becomes available.
<https://www.osha.gov/Publications/OSHA3990.pdf>
- **Florida Department of Health: What you need to know about COVID-19 in Florida** – Adults 60 and older and those with underlying medical conditions like heart disease, diabetes and lung disease are more likely to develop serious illness. Here's what you can do right now.
<https://floridahealthcovid19.gov>
- **Florida Department of Economic Opportunity: CDBG-CV** -- Prior to receipt of CDBG-CV funding from the HUD Office of Community Planning and Development, Florida is required to prepare a formal substantial amendment to the FFY 2019 Action Plan. DEO is responsible for preparing the Action Plan and soliciting comments from the public regarding the plan and its subsequent amendments. <http://www.floridajobs.org/community-planning-and-development/assistance-for-governments-and-organizations/community-development-block-grant-program/community-development-block-grant---coronavirus-relief-funding>

County Resources

Lee County - <https://www.leegov.com/covid-19>

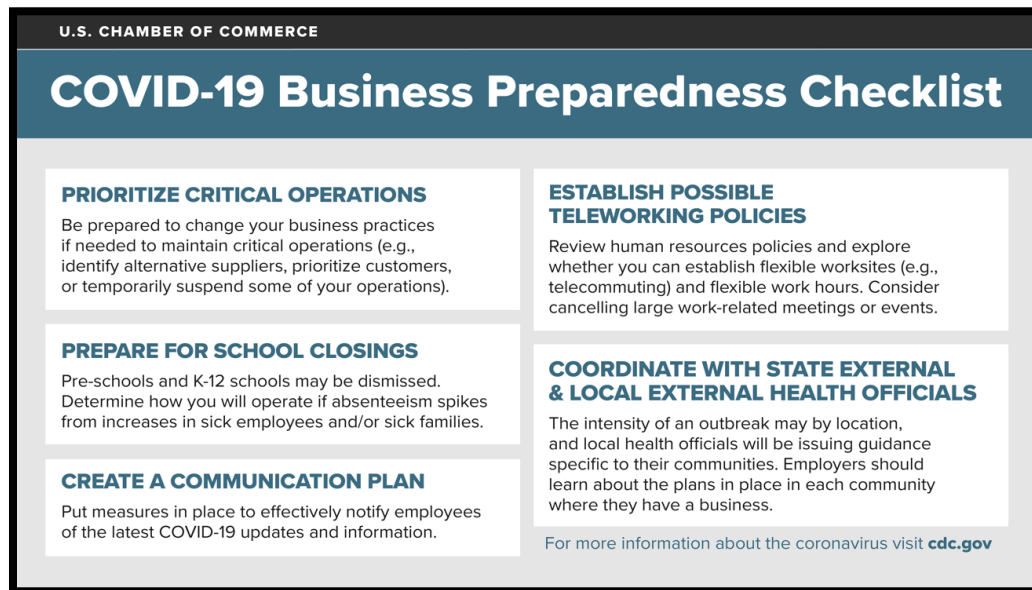
Collier County - <https://www.colliercountyfl.gov/your-government/divisions-a-e/communication-customer-relations-division/collier-county-covid-19-information>

Hendry County- https://www.hendryfla.net/covid-19_rumors_resources_and_more.php

Glades County- https://www.myglades.com/public_notices.php

Charlotte County - <https://www.charlottecountyfl.gov/covid-19/>

Sarasota County - <https://www.scgov.net/government/health-and-human-services/covid-19-coronavirus>



DISASTER FINANCIAL ASSISTANCE

- **Economic Impact Payments** – Payments to individuals and families within a designated income threshold.
<https://www.irs.gov/coronavirus-tax-relief-and-economic-impact-payments>
- **Florida Small Business Emergency Bridge Loan Program** – Short-term, interest-free working capital loans which are intended to “bridge the gap” between the time a major disaster hits and when a business has secured longer-term recovery resources. The program provides a short-term loan of State of Florida public funding. It is not a grant and must be repaid.
<https://floridadisasterloan.org/>
- **SBA Disaster Assistance** – The U.S. Small Business Administration (SBA) provides low-interest disaster loans to help businesses and homeowners recover from declared disasters. Businesses can apply for loans online through a 3-step loan process.
<https://www.sba.gov/funding-programs/disaster-assistance>
- **SBA Economic Injury Disaster Loans** – Substantial economic injury means the business is unable to meet its obligations and to pay its ordinary and necessary operating expenses. EIDLs provide the necessary working capital to help small businesses survive until normal operations resume after a disaster. The SBA can provide up to \$2 million to help meet financial obligations and operating expenses that could have been met had the disaster not occurred. Your loan amount will be based on your actual economic injury and your company's financial needs, regardless of whether the business suffered any property damage.
<https://disasterloan.sba.gov/ela/Information/EIDLloans>

- **Grant Watch** – Coronavirus Relief grants currently available.
<https://www.grantwatch.com/cat/56/coronavirus-covid-grants.html>
- **Florida Connex** - A supply chain database tool for the manufacturing industry in Florida. This tool contains in-depth information on a broad range of Florida manufacturers, along with detailed search functions to highlight specific production capabilities, certifications, equipment, material types and more.
<https://www.floridamakes.com/what-we-do/supply-chain-optimization.stml>
- **NRAEF Restaurant Employee Relief Fund** - Grants of \$500 to restaurant industry employees who have been adversely impacted by COVID-19 financially, whether through a decrease in wages or loss of employment that results in a lack of resources to pay for essential expenses.
<https://rerf.us/apply-for-aid/>
- **Bartender Emergency Assistance Program** – The United States Bartenders Guild's National Charity Foundation has launched a program for bartenders in need of assistance during the coronavirus outbreak. The Bartender Emergency Assistance Program is meant to aid service industry personnel experiencing financial difficulties as a direct result of the outbreak. Eligible applicants can receive a grant, in undisclosed sums, to help pay their bills.
<https://www.usbgfoundation.org/beap>
- **211** – If you need assistance finding food, paying housing bills, accessing free childcare, or other services, use the search bar to find your local 211 or dial 211 to speak to someone who can help.
<http://www.211.org/services/covid19>
- **United Way COVID-19 Community Response and Recovery Fund** – To support this rapidly escalating need, United Way Worldwide has created the COVID-19 Community Response and Recovery Fund. Our Fund supports communities struggling in the wake of the new virus, by supporting local United Ways and 211, the go-to information resource in times of crisis. Every year, 211 specialists answer 12 million requests by phone, text, chat and email to connect people with disaster, food, housing, utility, health care resources and more. There is no other network in the country with a similar pulse on America's needs.
<https://www.unitedway.org/recovery/covid19>
- **USDA Farm Loan Discovery Tool** - Answer a few short questions to learn about USDA farm loans that might be right for you. <https://www.farmers.gov/fund/farm-loan-discovery-tool>
- **USDA Microloans Program**- The focus of Microloans is on the financing needs of small, beginning farmer, niche and non-traditional farm operations, such as truck farms, farms participating in direct marketing and sales such as farmers' markets, CSA's (Community Supported Agriculture), restaurants and grocery stores, or those using hydroponic, aquaponic, organic and vertical growing methods.
<https://www.fsa.usda.gov/programs-and-services/farm-loan-programs/microloans/index>
- **USDA Coronavirus Food Assistance Program**-- The Coronavirus Food Assistance Program provides vital financial assistance to producers of agricultural commodities who have suffered a five-percent-or-greater price decline or who had losses due to market supply chain disruptions due to COVID-19 and face additional significant marketing costs. <https://www.farmers.gov/cfap>

- **Florida Farm Bureau COVID-19 Resource Page** - A COVID-19 resource page for farmer and rancher families. Check this page regularly for updates on COVID-19 and its impact on agriculture at the state and national level.
<https://www.floridafarmbureau.org/covid-19-resources/>
- **USDA Rural Resource Guide** - This resource matrix organizes funding opportunities identified in the CARES Act and other federal resources that can help support rural America. Opportunities are categorized by customer and assistance type.
https://rd.usda.gov/sites/default/files/USDA_COVID-19_Fed_Rural_Resource_Guide.pdf
- **National Endowment for the Arts** - The National Endowment for the Arts will award funds to nonprofit arts organizations across the country to help these entities and their employees endure the economic hardships caused by the forced closure of their operations due to the spread of COVID-19. These funds are intended to help save jobs in the arts sector and keep the doors open to the thousands of organizations that add value to America's economy and the creative life of our communities. <https://www.arts.gov/grants-organizations/CARES/grant-program-description>
- **Hello Alice Business For All Grants** - Grants of \$10,000 and in-kind support to USA small business owners for relief during the Coronavirus (COVID-19) crisis. Funding is intended to provide emergency support to small businesses that have been impacted by COVID-19 pandemic. In addition to grant funds, grantees will receive ongoing support from the Hello Alice community.
<https://businessforall.helloalice.com/about/>
- **USDA Learning and Telemedicine** – The Distance Learning and Telemedicine program helps rural communities use the unique capabilities of telecommunications to connect to each other and to the world, overcoming the effects of remoteness and low population density. For example, this program can link teachers and medical service providers in one area to students and patients in another. All upcoming events will be posted on the events program tab.
<https://www.rd.usda.gov/programs-services/distance-learning-telemedicine-grants>

HOUSING ASSISTANCE

- **Florida Low-Income Home Energy Assistance Program**- The Low-Income Home Energy Assistance Program can help customers pay their home energy expenses. The program has three categories of assistance: home energy assistance, crisis assistance, and weather related or supply shortage energy crisis assistance. Each category has unique requirements.
<https://www.benefits.gov/benefit/1553>
- **U.S. Department of Housing and Urban Development Rental Help** – Resources and fact sheets for renters in Florida <https://www.hud.gov/states/florida/renting>
- **Florida Housing Search** – A free website to find affordable housing.
<http://www.floridahousingsearch.org/>
- **USDA Single Family Home Loan Program** - Providing low- and moderate-income households the opportunity to own adequate, modest, decent, safe and sanitary dwellings as their primary residence

in eligible rural areas. Eligible applicants may purchase, build, rehabilitate, improve or relocate a dwelling in an eligible rural area with 100% financing.

<https://www.rd.usda.gov/programs-services/single-family-housing-guaranteed-loan-program>

- **VA Housing Assistance** - VA housing assistance can help Veterans, service members, and their surviving spouses to buy a home or refinance a loan. We also offer benefits and services to help you build, improve, or keep your current home.
<https://www.va.gov/housing-assistance/>

FOOD ASSISTANCE PROGRAMS

- **Summer BreakSpot** - Summer BreakSpot locations are a place for kids and teens 18 and under to come and enjoy free meals while school is out. At almost all sites, there is no application necessary and any child 18 or younger can simply come during mealtimes to receive a meal.
<https://summerbreakspot.freshfromflorida.com/>
- **Lee County Grab&Go Meals** - The Food and Nutrition Services department will be serving a “Grab & Go” breakfast and lunch at selected schools and community sites. The USDA has granted the District the flexibility to provide these meals during a time of unanticipated closure. Breakfast and lunch will be served together in a single bag. The meals are free for anyone 18 years of age and under. It is expected the meals will be eaten at home, and not the schools where they are picked up.
https://www.leeschools.net/parent_portal/covid-19/meal_pick_up_sites
- **WIC** - Provides nutritious, high-quality foods and formula to pregnant women and/or young children in low-income households/those who lose their jobs or are laid off due to COVID-19.
<http://signupwic.com/>
- **The Emergency Food Assistance Program** - Provides nutritious, high-quality foods to low-income households; Distributes food to participating food banks, food pantries, soup kitchens and other feeding sites; and supplies food to be served to individual households or as prepared meals in a community setting for eligible recipients.
<https://www.fdacs.gov/Food-Nutrition/Nutrition-Programs/The-Emergency-Food-Assistance-Program-TEFAP>
- **Harry Chapin Food Bank** – Mobile food bank schedule with locations.
<https://harrychapinfoodbank.org/our-impact/programs/mobile-pantry-schedule/>

RESOURCES FOR DISTANCE LEARNING

- **Florida Department of Education Free Resources** – Educational materials for teachers, parents and families to utilize while distance learning.
<http://www.fldoe.org/em-response/resources-families.stml>

- **WeAreTeachers** – 275+ Online Learning Resources
<https://www.weareteachers.com/free-online-learning-resources/>
- **FDOE Best Practices** – Helpful list of best practice for distance learning and equity among students, for students with disabilities and for English language learners.
<http://www.fldoe.org/em-response/distance-learning.stml>
- **Comcast Internet Essentials**- Internet options for low-income households.
<https://www.internetessentials.com/covid19>
- **Century Link Lifeline Program** – Internet options for low-income households.
<https://www.centurylink.com/aboutus/community/community-development/lifeline.html>
- **Lee County Schools Distance Learning Resources** – Information and guidelines for Lee residents.
<https://www.leeschools.net/cms/One.aspx?portalId=676305&pageId=29569611>
- **Collier County Schools Distance Learning Resources** – Information and guidelines for Collier residents.
<https://www.collierschools.com/elearns>
- **Sarasota County Schools Distance Learning Resources**- Information and guidelines for Sarasota residents.
<https://www.sarasotacountyschools.net/ican>
- **Charlotte County Schools Distance Learning Resources** – Information and guidelines for Charlotte residents.
<https://www.yourcharlotteschools.net/Page/24416>
- **Hendry County Schools Distance Learning Resources** – Information and guidelines for Hendry residents. <https://www.hendry-schools.org/domain/1690>
- **Glades County Schools Distance Learning Resources** – Information and guidelines for Glades residents. <http://www.gladesedu.org/covid-19-information>

COMMUNICATION RESOURCES

- **Center for Disease Control and Prevention Know the facts about coronavirus disease 2019 (COVID-19) and help stop the spread of rumors**
https://www.cdc.gov/coronavirus/2019-ncov/symptoms-testing/share-facts.html?CDC_AA_refVal=https%3A%2F%2Fwww.cdc.gov%2Fcoronavirus%2F2019-ncov%2Fabout%2Fshare-facts.html
- **Alert Florida** – Florida’s Alert Notification Initiative. Individuals and businesses can learn how to receive emergency alerts and other public safety notifications directly from their local jurisdictions.
<https://apps.floridadisaster.org/alertflorida/>
- **Florida Department of Health (FDOH) Coronavirus Hotline** –
The COVID-19 Call Center is available 24/7 1 (866) 779-6121 | COVID-19@flhealth.gov

- **Florida Department of Health (FDOH) [COVID-19 Dashboard](#)** – To keep Florida residents and visitors safe, informed and aware about the status of the virus, The Florida Department of Health has launched a COVID-19 dashboard that will be updated twice daily.
- **U.S. Chamber of Commerce, Coronavirus Response Toolkit** – The U.S. Chamber has compiled CDC's coronavirus recommendations for businesses and workers across the country. We continue to encourage American businesses to follow data-based guidance from the CDC and state and local officials. Below, you'll find a sharable graphics based on the CDC's latest guidance for businesses and employees. We encourage you to share these assets on social media, websites, and other channels, and send them to your employees.
<https://www.uschamber.com/coronavirus-response-toolkit>

DISASTER RECOVERY RESOURCES

- **Florida DEO Reemployment Assistance Center** - Reemployment Assistance (also called reemployment assistance insurance) provides temporary wage replacement benefits to qualified individuals who are out of work through no fault of their own.
<http://www.floridajobs.org/job-seekers-community-services>
- **Responding to Disaster: Tips from the Frontline** – Helpful info-graphic of key items.
www.uschamberfoundation.org/bhq/when-disaster-hits-home-story-resilience-and-recovery
- **Small Business Recovery Expanded Guide** – When a disaster occurs, businesses must take care of employees' needs, communicate impact, address financial matters (e.g., insurance, disaster assistance), restore operations, and organize recovery. Here are resources to help reopen your business and make long-term recovery progress.
<https://www.uschamberfoundation.org/node/43168>
- **Florida SBDC Network** – As a principal responder in the state's Emergency Support Function (ESF) 18 for Business & Industry, the SBDC Network is a key economic development organization that supports disaster preparedness, recovery and mitigation through its Business Continuation services. Specialists can help develop a comprehensive business continuity, emergency preparedness, and disaster recovery plan tailored for businesses at **no cost**.
<http://floridasbdc.org/services/business-continuation/>
- **Resources to Help Your Small Business Survive the Coronavirus** – The coronavirus is causing financial difficulties for businesses across the U.S. Here are five resources that can help you navigate this difficult situation.
<https://www.uschamber.com/co/start/strategy/small-business-resources-for-surviving-coronavirus>

ECONOMIC DEVELOPMENT & CHAMBER OF COMMERCE POINT CONTACTS

Florida Chamber of Commerce

Florida Chamber COVID-19 Resource Center
[Florida Chamber – Sign Up for COVID-19 Updates](#)

Southwest Florida Chambers

[Find your Chamber here](#)

Lee County Economic Development

John Talmage, Director
239-533-6800
JTalmage@leegov.com

Collier County Economic Development

Sean Callahan, Exec. Director of Corporate Business Operations
239-252-8383
Sean.Callahan@colliercountyfl.gov

Charlotte County Economic Development

Dave Gammon, Director
941-764-4942
dave.gammon@CharlotteCountyFL.gov

Sarasota County Economic Development

Dave Bullock, Interim CEO
941-309-1200 x100
dbullock@edcsarasotacounty.com

Glades County Economic Development

Tracy Whirls, Executive Director
863-946-0300
twhirls@gladescountyedc.com

Hendry County Economic Development

Keitha Daniels, Director
863-612-4912
keitha@hendryedc.com



Social Distancing for Infectious Disease

Florida Department of Health • FloridaHealth.gov

Social distancing measures are taken to restrict when and where people can gather to stop or slow the spread of infectious diseases. Social distancing measures include limiting large groups of people coming together, closing buildings and canceling events.

Protect yourself and your community.

Wash your hands often with soap and water for at least 20 seconds, especially after going to the bathroom, before eating, and after blowing your nose, coughing or sneezing. If you don't have soap and water, use an alcohol-based hand sanitizer with at least 60% alcohol. Avoid close contact with people who are sick, and stay home when you're sick.



Change your daily habits.

Avoid shopping at peak hours and take advantage of delivery or pick-up services with retailers.



Work with your employer.

Cooperate with leadership to change company practices, set up flexible shift plans, have employees telecommute, and cancel any large meetings or conferences.



Look for communications from universities and colleges:

Regarding suspending classes, going to web-based learning and canceling all large campus meetings and gatherings.



Keep at least six feet between you and other people.

Avoid shaking hands as a social greeting.



Avoid public transit if possible.

Don't travel to areas with active outbreaks.



Avoid crowded places.

Sporting events, community festivals, and concerts



Learn more:

tinyurl.com/CDCgatherings
tinyurl.com/FLcdcprevention

Florida Health Office of Communications 05-09-20

6 WAYS TO PREVENT A VIRUS FROM DISRUPTING YOUR BUSINESS

Follow these tips to avoid costly interruptions caused by a virus outbreak.

1. STAY ALERT

Know your risks by using resources from the CDC, WHO, and an agency local to your region such as your state's Department of Health or your county's Emergency Management Agency.



2. CONNECT OFTEN

Communicate frequently with employees, key partners, clients/customers and suppliers/vendors. Consider hotlines, emails, intranets, dedicated websites and social posts.

3. LIMIT EXPOSURE

Implement "social distancing measures." Minimize in-person meetings and conference attendance and discontinue other nonessential travel.



4. KEEP THE SICK AT HOME

Prepare for absences by cross-training staff and/or obtaining temporary help.

5. PREPARE FOR DISRUPTIONS

Identify alternate suppliers/vendors in case of supply chain disruption.



6. BUILD YOUR PLAN

IBHS's OFB-EZ business continuity toolkit can help you identify what to do now to prepare for and respond to a virus outbreak. Learn more at DisasterSafety.org/OFB-EZ.



[DISASTERSAFETY.ORG](https://DisasterSafety.org)

BUSINESS DAMAGE ASSESMENT SURVEY

If you believe your business has been affected by the Coronavirus, please take a moment to complete SBA's Business Damage Assessment Survey. The survey is available in English, Spanish and Haitian Creole and is available at:

<https://floridadisaster.biz/BusinessDamageAssessments>

This survey is meant to determine how much the Coronavirus has impacted small businesses. The results of this survey will be used to justify a Small Business Administration Disaster Declaration for the State of Florida so that funds may be allocated and the application process may begin.

[FloridaDisaster.biz](https://floridadisaster.biz) is a partnership between the Florida Department of Economic Opportunity (DEO) and the Florida Division of Emergency Management (DEM).

DEO is the lead agency for the State Emergency Response Team Emergency Support Function (ESF) 18. ESF-18 is tasked with coordinating local, state and federal agency actions that provide immediate and short-term assistance to business and industry as well as economic stabilization. Additionally, ESF-18 works with business and industry to identify available resources to meet the needs of the state and its citizens before, during and after a disaster.

U.S. CHAMBER OF COMMERCE

Keeping Commercial Establishments Safe

Encourage your employees and customers to...

**PRACTICE GOOD HYGIENE**

- Stop handshaking—use other noncontact methods of greeting
- Clean hands at the door and remind employees to regularly wash their hands
- Promote tap and pay to limit handling of cash
- Disinfect surfaces like doorknobs, tables, desks, and handrails regularly

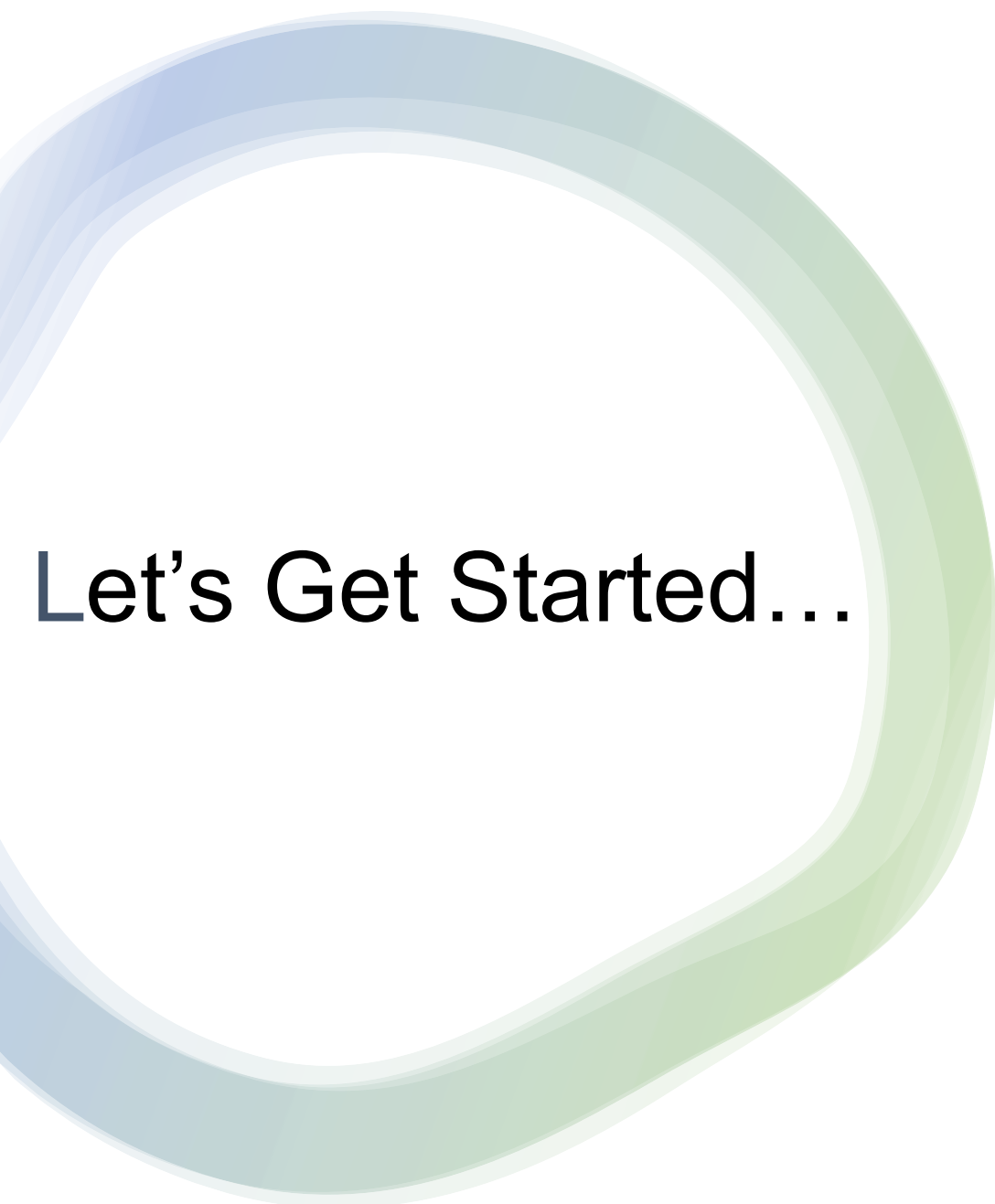
**AVOID CROWDING**

- Use booking and scheduling to stagger customer flow
- Use online transactions where possible

**FOR TRANSPORTATION BUSINESSES, TAXIS, AND RIDE SHARES**

- Keep windows open when possible
- Increase ventilation
- Regularly disinfect surfaces

What every American and community can do now to decrease the spread of coronavirus



Let's Get Started...

- Who Is Missing?
- What has this group seen/experienced so far?
- Have certain types of businesses benefitted from the pandemic?
- What types of businesses have been most negatively impacted?
- Most shocking impacts?
- Concerns about the project?
- Questions?



Thank You!

Stay Involved:

Mwuerstle@swfrpc.org

239-281-6978