
SOUTHWEST FLORIDA REGIONAL PLANNING COUNCIL

EST. 1973



REQUIRED BY STATE STATUTE

UNFUNDED

01

*SRPP:
Strategic
Regional
Policy Plan*

02

*Regional
Data
Clearing-
house /
IC&R*

03

*Annual
Report /
Financial &
Audit
Reporting*

04

*Regional
Dispute
Resolution*

ONGOING PROGRAMS FUNDED BY FEDERAL GOVERNMENT

01

Local Emergency Planning Committee

- *Outreach, Education, & Comprehensive Emergency Management Plan*

02

Hazardous Material Emergency Planning

- *Training of first responders*

03

Economic Development District

- *CEDS required for federal funding*
- *Impact modeling provided*

The Regional Planning Councils Are Delegated:

37 duties within **11** chapters:

CHAPTER 129: ADMINISTRATIVE PROCEDURES ACT

CHAPTER 163: INTERGOVERNMENTAL PROGRAMS

CHAPTER 186: STATE & REGIONAL PLANNING

CHAPTER 258: MYAKKA RIVER MANAGEMENT COORDINATING COUNCIL

CHAPTER 260: FLORIDA GREENWAYS & TRAILS COUNCIL

CHAPTER 288: COMMERCIAL DEVELOPMENT & CAPITAL IMPROVEMENTS

CHAPTER 339: TRANSPORTATION FINANCE & PLANNING

CHAPTER 380: LAND AND WATER MANAGEMENT

CHAPTER 403: ENVIRONMENTAL CONTROL

CHAPTER 420: HOUSING

CHAPTER 1013: EDUCATIONAL FACILITIES

CHAPTER 129: ADMINISTRATIVE PROCEDURES ACT

- When an administrative law judge presides over a matter involving RPC, RPC shall reimburse administrative law judge's travel expenses.

CHAPTER 163: INTERGOVERNMENTAL PROGRAMS

- Review and comment on regional resources or facilities identified in the SRPP.
- Review proposed plans or plan amendments under the State Coordinated Review
- Conduct scoping meetings upon request, to identify relevant planning issues.

CHAPTER 186: STATE & REGIONAL PLANNING

- Act as a regional data clearinghouse.
- Designated as the primary organization to address problems and plan solutions that are of greater-than-local concern.
- Florida's only multipurpose regional entity to plan for and coordinate intergovernmental solutions to growth-related problems; provide technical assistance to local governments; and, meet other needs of the communities in each region.
- Provide technical assistance to local governments on growth management matters.
- Assist local governments with activities designed to promote and facilitate economic development.
- Meet statutory requirements regarding membership for a regional planning council.
- Conduct business to run the organization.
- Provide advice to constituent local governments on regional, metropolitan, county, and municipal planning matters.
- Cooperate with federal and state agencies in planning for emergency management.
- Coordinate with other regional entities in preparing and assuring regular review of the Strategic Regional Policy Plan.
- Coordinate land development and transportation policies that foster region-wide transportation systems.
- Review plans of independent transportation authorities and metropolitan planning organizations to identify inconsistencies between those agencies' plans and applicable local government plans.
- Provide consulting services to a private developer or landowner under certain circumstances.
- Prepare and adopt by rule a Strategic Regional Policy Plan (SRPP). SRPP shall be prepared at least every 5 years.
- Establish by rule a dispute resolution process to reconcile differences on planning and growth management issues between local governments, regional agencies, and private interests.
- Provide annual report of activities.

CHAPTER 186: STATE & REGIONAL PLANNING

- Statute provides protection for regional planning councils created pursuant to Chapter 163, F.S.
- Must take into account that the accuracy and reliability of maps and data for GIS may be limited to various factors.
- Submit an audit report and an annual financial report for the previous fiscal year.

CHAPTER 258: MYAKKA RIVER MANAGEMENT COORDINATING COUNCIL

- Required to serve on Myakka River Management Coordinating Council

CHAPTER 260: FLORIDA GREENWAYS & TRAILS COUNCIL

- Serve on the Florida Greenways and Trails Council. Membership rotates among the 7 RPCs.

CHAPTER 288: COMMERCIAL DEVELOPMENT & CAPITAL IMPROVEMENTS

- An appointed representative by FRCA shall serve on the Rural Economic Development Initiative.
- Participate in a pre-submission workshop concerning a military base reuse plan.

CHAPTER 339: TRANSPORTATION FINANCE & PLANNING

- Develop transportation goals and policies as part of the SRPP.

CHAPTER 380: LAND AND WATER MANAGEMENT

- Serve on Resource Planning and Management Committees as designated by the Governor prior to an area being designated as an Area of Critical State Concern.
- Provide technical assistance to local governments in the preparation of land development regulations and local comprehensive plans in Areas of Critical State Concern.

CHAPTER 403: ENVIRONMENTAL CONTROL

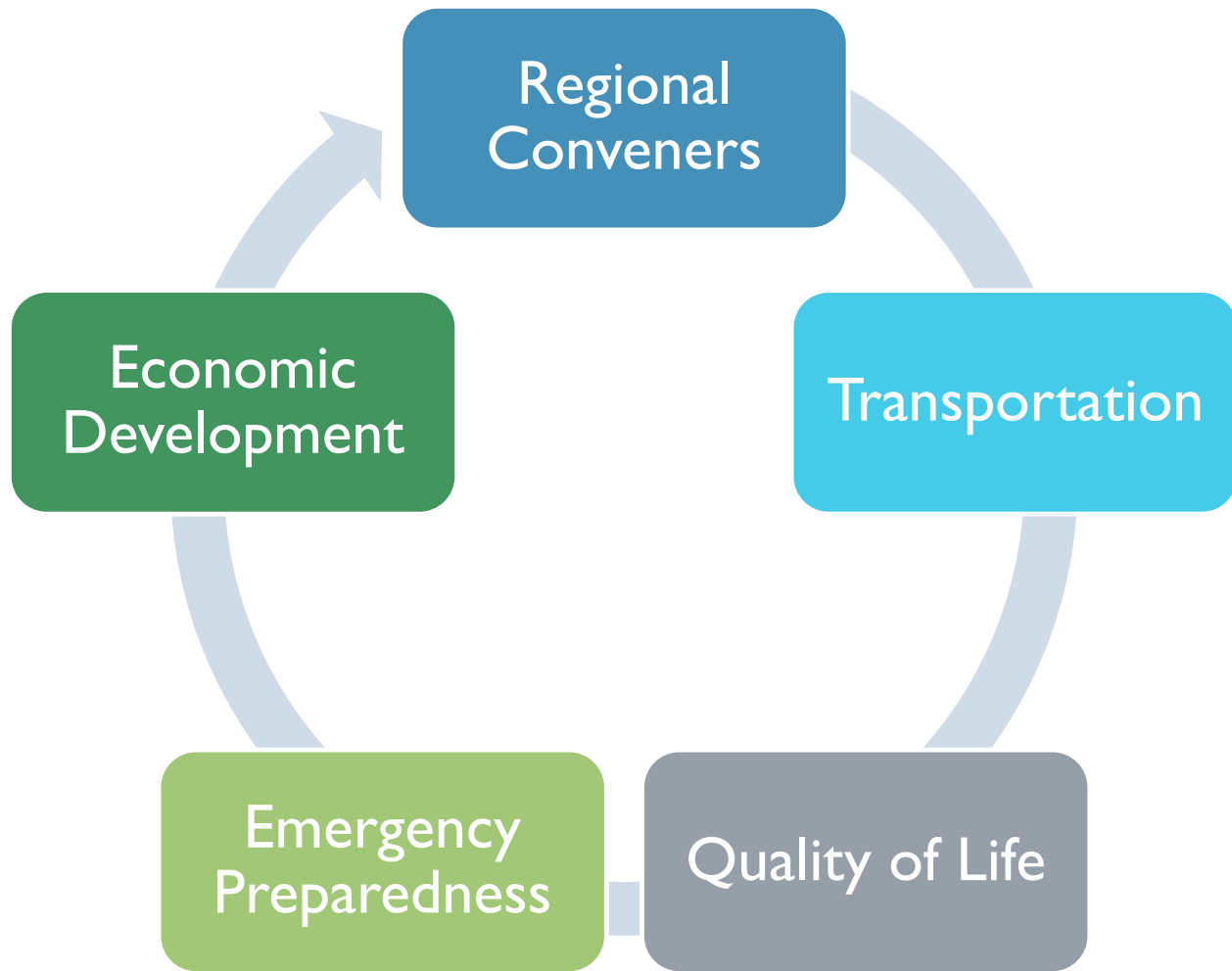
- Serve on Ecosystem Management Advisory Teams.
- Perform local hazardous waste management assessments and provide technical expertise.
- Follow the local hazardous waste management assessment guidelines to properly implement the assessments.
- Designate sites for regional hazardous waste storage or treatment facility could be constructed.
- Participate in regional permit action teams.

CHAPTER 420: HOUSING

- One representative from RPCs shall serve on the Affordable Housing Study Commission, as appointed by Governor.

CHAPTER 1013: EDUCATIONAL FACILITIES

- Review Campus Master Plans prior to adoption and provide comments.




PRIMARY FOCUS AREAS

FOR ALL 10 REGIONAL
PLANNING COUNCILS:

RELEVANCY:

*This Is What We Heard from
County Managers...*




Water Quality
regional mitigation, resolutions, and eco-systems calculations of negative impacts of red tide and algae blooms.




Affordable Housing
regional and state coordination of planning for communities, policies, and programs.



Regional Transportation
proactively planning for alternative and multi-modal transportation.



Storm Resiliency & Climate Change
capacity-building for economic, social, community health, infrastructure and environmental issues.



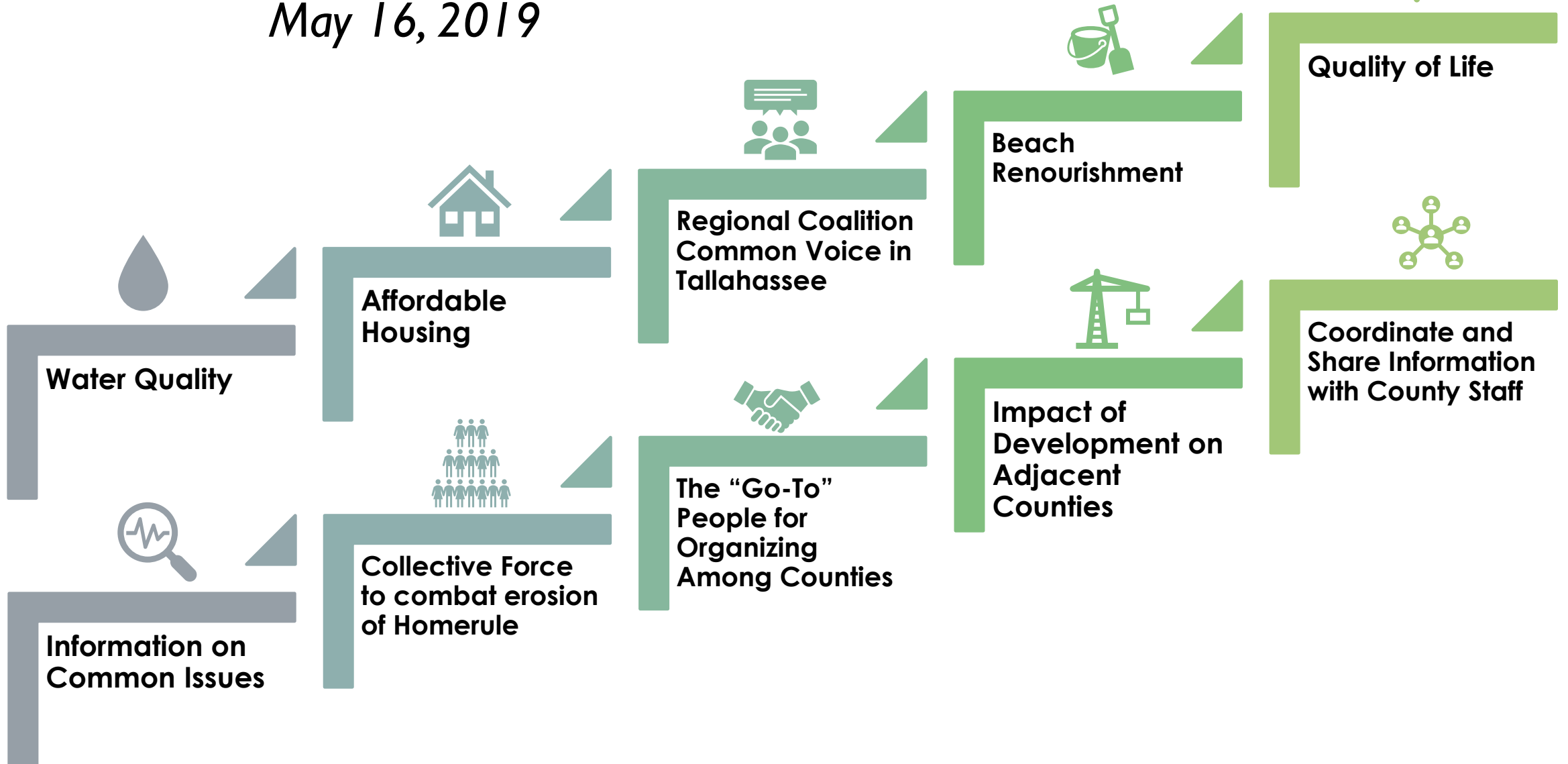
Quality of Life
regional opioid prevention, public safety, mental health, and healthy futures.



Inter-governmental Coordination & Communication
region-wide facilitation, research, and developing partnerships in many areas that make a difference locally and state-wide

RELEVANCY ISSUES FROM THE RPC BOARD.....

May 16, 2019



THIS IS WHAT WE HEARD - MEETING CHANGES



Quarterly meetings



Half Day Event Meeting
(Mini Conference)



Short Business Meeting
followed by a meaningful
Presentation on an
Important Issue

**Moving
Forward**



FULL TIME EMPLOYEES



MARGARET WUERSTLE Executive Director

Grant Research, Preparation, Implementation and Oversight, Promise Zone Coordinator, Hazardous Materials Planning and Prevention Program Grant, EDA Agriculture Grant for New Markets, Branding and Marketing, Bonita Springs Affordable Housing Study, Clewiston Revitalization Plan, MLK Corridor Study, LaBelle Day Trip project, LaBelle Farm Tours project, Regional Plan for Agriculture Sustainability, Hendry County Education Vision and Implementation Plan, Veterans Transportation and Community Living Initiative, Annual Budget and Workplan



JAMES BEEVER, III Planner IV/Environmental Planner

Planning, environmental review, technical assistance in natural resources, restoration, land acquisition, wildlife resource inventory, fish and wildlife, wildlife habitat planning, flood protection, wastewater treatment, ecosystem services evaluations, climate change planning, and project review of water, wetlands and natural resources. Review/Planning of Comprehensive Everglades Restoration and SW Florida Watershed Study Projects, review of clearinghouse projects. Serves on 17 committees: Estero Bay ABM, CREW, and Myakka River Coordinating Council.



REBEKAH HARP Business Operations Manager/Grants Manager/Digital Designer

Operations Management, Accounting/ Financials/ Budget/ Audit/ Purchasing/ Accounts Receivable/ Accounts Payable, Grants Management, Grant Deliverable/Research Support, Human Resources/Employee Benefits, Records Management Liaison Officer, IT Administrator, Website Administrator, Digital Designer



CJ KAMMERER Planner I/Operations Analyst

CEDS/Economic Development District Coordinator, LEPC/HMEP Coordinator, Brownfield Coalition Assessment Grant Manager, Grant Writer, RPC Meeting Coordinator, Hazardous Facilities Analysis, Economic Impact Modeling, Checks and Check Requests, Data Analyst, DRI & Comp Plan Amendment Records Management

REQUIRED BY STATE STATUTES - UNFUNDED



**Update & Maintain
The Strategic Regional
Policy Plan**



**Be The Regional Data
Clearinghouse / IC&R
(Intergovernmental
Coordination And Review)**



**Provide Annual Report/
Financial Audit & Reporting**



**Regional Dispute
Resolution if Requested**

ONGOING PROGRAMS FUNDED

BY THE FEDERAL GOVERNMENT (\$172,164)



**Local Emergency
Planning Committee**



**Hazardous Material
Emergency Planning**



**Economic Development
District**

Brownfield Grant
(October 2021)

**SWF Agriculture
Sustainability/Marketing
Grant** (July 2021)

Promise Zone
(June 2026)

**COMPLETE
CURRENT
PROJECTS**

PROVIDE INFORMATION ON COMMON ISSUES IMPACTING THE REGION

Impact Of Development On Adjacent Counties

Coordinate & Share Information With County Staff

Provide Information On Common Issues



Home Rule



Water Quality



Affordable
Housing



Beach
Renourishment



Resiliency



Quality of Life
Issues



Impact of
Development



Coordinate
and Share
Information



Information on
Common
Issues



Collective
Force

INTER-GOVERNMENTAL COORDINATION & COMMUNICATION



Hold one public workshop meeting with Board members to identify the issues to be included in our Common Voice and set the Agenda for quarterly meetings and major event



Coordinate quarterly RPC meetings with presentations on relevant common issues



Coordinate and host one major event with a prominent speaker on an issue of importance to the RPC Board members



Coordinate meeting with all planning directors and appropriate planning staff twice a year



Share all comp plan amendments with adjacent counties and County/City Planning Staff



OPERATIONAL CHANGES

RPC Quarterly Board Meetings

(4 meetings/yr. plus 1 workshop)

One workshop meeting

in addition to the 4 board meetings to determine topics and discuss speakers

Three short business meetings

followed by a speaker on a relevant topic

One major event/conference

Annual full/half day conference

NEW MEETING SCHEDULE

FY 19-20

21

NOVEMBER
2019

- Workshop to determine relevant issues and potential speakers for the year.
- Nominating Committee appointed for election of 2020 Officers.

16

JANUARY
2020

- Election of Officers
- Speaker on subject determined at workshop

19

MARCH
2020

- Speaker on subject determined at workshop

18

JUNE
2020

- Audit Report
- Budget & Workplan
- Speaker on subject determined at workshop

17

SEPTEMBER
2020

- Host Major Event

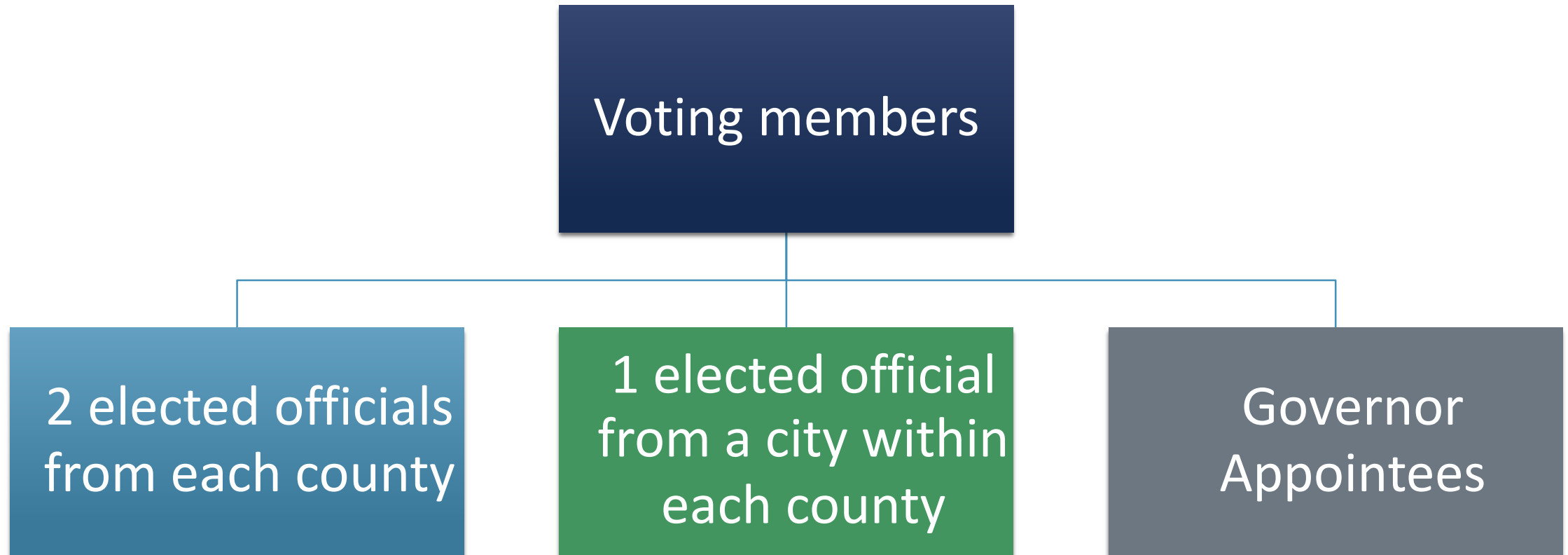
OPERATIONAL CHANGES NEEDED

Approval of
Items

Authorize Executive Board to
approve items between meetings

Approved items will be brought
to the next full board

OPERATIONAL CHANGES



**Other Cities in the region will be notified of meetings and sent the agenda packet.*

PROPOSED BUDGET

Revenues	SWFRPC General Fund	SWFRPC Special Revenue	Budget Totals
Assessments	\$518,780	-	\$518,780
Assessments: Loss of Membership	\$(350,963)	-	\$(350,963)
Total Assessment Income:	\$167,817		\$167,817
Secured Federal/State Grants		560,052	560,052
*Program Development (Unsecured Grants/Contracts)	219,264	40,122	259,386
Secured Contractual	-	15,000	15,000
Interest/Misc	6,000	-	6,000
Total Income (Revenue):	\$393,081	\$615,174	\$1,008,256

Expenditures			
Direct:			
Salaries (A)	\$94,328	\$237,390	\$331,718
FICA	25,376	-	25,376
Unemployment	-	-	-
Workers Compensation	1,246	-	1,246
Retirement	46,175	-	46,175
Health Insurance (B)	55,187	-	55,187
Total Personnel Services:	\$222,313	\$237,390	\$459,703

Expenditures				
Consultant Fees	(C)	-	\$54,950	\$54,950
Contractual	(D)	-	289,333	289,333
Audit Fees		24,000	-	24,000
Travel		10,000	27,000	37,000
Telephone		3,800	-	3,800
Postage		1,200	-	1,200
Equipment Rental	(E)	4,896	-	4,896
Insurance	(F)	9,029	-	9,029
Repair/Maint. (Equip/Vehicle)		500	-	500
Printing/Reproduction		3,000	-	3,000
Utilities (Elec, Internet)		8,500	-	8,500
Advertising		600	1,000	1,600
Other Miscellaneous		200	-	200
Office Supplies		1,500	1,500	3,000
Computer Related Expenses	(G)	25,097	-	25,097
Dues and Memberships	(H)	23,800	-	23,800
Professional Development		1,000	-	1,000
Meetings/Events		3,000	4,000	7,000
Capital Outlay-Operations		-	-	-
Lease Long Term		50,646	-	50,646
Operational Expense:		\$170,768	\$377,783	\$548,551
Total Cash Outlays:		\$393,081	\$615,173	\$1,008,255
Net Income/Loss:		0	-	0