

1400 Colonial Blvd., Suite 1
Fort Myers, FL 33907



P: 239.938.1813 | F: 239.938.1817
www.swfRPC.org

COUNCIL MEETING AGENDA

January 17, 2019

9:00am – 11:00am

Mission Statement:

To work together across neighboring communities to consistently protect and improve the unique and relatively unspoiled character of the physical, economic and social worlds we share...for the benefit of our future generations.

1	INVOCATION	
2	PLEDGE OF ALLEGIANCE	
3	ROLL CALL	
4	PUBLIC COMMENTS	
5	AGENDA	Page 1
6	MINUTES OF THE DECEMBER 20, 2018 MEETING- WILL BE IN THE FEBRUARY PACKET	
7	REGIONAL IMPACT	Page 18
	a) Palmer Ranch Increment 29 Pre-App Checklist	Page 22
8	CONSENT AGENDA	Page 32
	a) Intergovernmental Coordination and Review	Page 34
9	PRESENTATIONS	
	a) South Florida Water Management District	
	b) Master Wetland Mitigation Strategy	Page 39
	c) Disaster Recovery Coordinator Update	
10	DIRECTOR'S REPORT	Page 70
	a) November 2018 Financials	Page 72
	b) Nominating Committee	
	c) Promise Zone Update- Relaunch Meeting on March 18 at 2 pm	
	d) FRCA Update	Page 81
	e) EDA Agricultural Sustainability Grant	
11	STAFF SUMMARIES	
	a) Grant Activity Sheet (Information Only)	Page 85
12	COMMITTEE REPORTS	
	a) Executive Committee – Chair Thomas Perry	
	- Budget & Finance Committee	
	- Legislative Affairs Committee	
	- Economic Development Committee	

Two or more members of the Peace River Basin Management Advisory Committee and Charlotte Harbor National Estuary Program may be in attendance and may discuss matters that could come before the Peace River Basin Management Advisory Committee and Charlotte Harbor National Estuary Program, respectively, for consideration.

In accordance with the Americans with Disabilities Act (ADA), any person requiring special accommodations to participate in this meeting should contact the Southwest Florida Regional Planning Council 48 hours prior to the meeting by calling (239) 338-2550; if you are hearing or speech impaired call (800) 955-8770 Voice/(800) 955-8771 TDD.

1400 Colonial Blvd., Suite 1
Fort Myers, FL 33907



P: 239.938.1813 | F: 239.938.1817
www.swfrpc.org

- b) Estero Bay Agency on Bay Management Committee – **Mr. James Beever**
- c) Quality of Life & Safety Committee – **Commissioner Willie Shaw**
- d) Regional Transportation Committee – **Ms. Margaret Wuerstle**
- e) Council Relevancy & Restructuring Committee – **Chair Thomas Perry**
- f) Water Quality & Water Resources Management - **Vice Mayor Mick Denham**

13	NEW BUSINESS
14	STATE AGENCIES COMMENTS/REPORTS
15	COUNCIL LEGAL CONSULTANT'S COMMENTS
16	COUNCIL MEMBERS' COMMENTS
17	ADJOURN

NEXT SWFRPC MEETING DATE: FEBRUARY 21, 2019

**THERE WILL BE AN EXECUTIVE COMMITTEE MEETING AT 8:15,
IMMEDIATELY PRECEDING THE COUNCIL MEETING**

Two or more members of the Peace River Basin Management Advisory Committee and Charlotte Harbor National Estuary Program may be in attendance and may discuss matters that could come before the Peace River Basin Management Advisory Committee and Charlotte Harbor National Estuary Program, respectively, for consideration.

In accordance with the Americans with Disabilities Act (ADA), any person requiring special accommodations to participate in this meeting should contact the Southwest Florida Regional Planning Council 48 hours prior to the meeting by calling (239) 338-2550; if you are hearing or speech impaired call (800) 955-8770 Voice/(800) 955-8771 TDD.

SOUTHWEST FLORIDA REGIONAL PLANNING COUNCIL MEMBERSHIP

OFFICERS

Mr. Thomas Perry, Chair

Commissioner Willie Shaw, Vice-Chair

Commissioner Donna Storter-Long, Secretary

Mr. Donald McCormick, Treasurer

CHARLOTTE COUNTY

Commissioner Joe Tiseo, Charlotte BCC

Commissioner Ken Doherty, Charlotte BCC

Councilman Gary Wein, City of Punta Gorda

Mr. Donald McCormick, Governor Appointee

Ms. Suzanne Graham, Governor Appointee

COLLIER COUNTY

Commissioner Bill McDaniel, Collier BCC

Commissioner Penny Taylor, Collier BCC

Councilman Reg Buxton, City of Naples

(City of Marco Island Vacancy)

Mr. Robert "Bob" Mulhere, Governor Appointee

(Governor Appointee Vacancy)

GLADES COUNTY

Commissioner Donna Storter-Long, Glades BCC

Commissioner Donald Strenth, Glades BCC

Councilwoman Pat Lucas, City of Moore Haven

Mr. Thomas Perry, Governor Appointee

HENDRY COUNTY

Commissioner Emma Byrd, Hendry BCC

Commissioner Mitchell Wills, Hendry BCC

Vice-Mayor Michael Atkinson, City of Clewiston

Commissioner Julie Wilkins, City of LaBelle

Mr. Mel Karau, Governor Appointee

LEE COUNTY

Commissioner Frank Mann, Lee BCC

Commissioner Cecil Pendergrass, Lee BCC

Councilman Fred Burson, City of Fort Myers

Councilmember Anita Cereceda, Town of Fort Myers Beach

Vice-Mayor Mick Denham, City of Sanibel

Councilman Greg DeWitt, City of Bonita Springs

(Governor Appointee Vacancy)

(Governor Appointee Vacancy)

SARASOTA COUNTY

Commissioner Mike Moran, Sarasota BCC

Commissioner Charles Hines, Sarasota BCC

Commissioner Willie Shaw, City of Sarasota

Councilmember Mitzie Fiedler, City of Venice

Mr. Felipe Colon, Governor Appointee

(Governor Appointee Vacancy)

EX-OFFICIO MEMBERS

Jon Iglehart, FDEP

Phil Flood, SFWMD

Wayne Gather, FDOT

Dennis Ragosta, SWFWMD

STAFF

Margaret Wuerstle, Executive Director

Beth Nightingale, Legal Consultant

James Beever

Charles Kammerer

Rebekah Harp

Sean McCabe

SWFRPC Attendance 2017-2018

Active Seats

	1/17	2/17	3/17	4/17	5/17	6/17	7/17	10/17	12/17	2/18	3/18	5/18	6/18	9/18	12/18
Anita Cereceda	No	No	No	No	No	No	No	No	No	No	No	No	No	No	No
Bill McDaniel	Yes	Yes	Yes	Yes	Yes	No	Yes	Yes	Yes	Yes	Yes	Yes	Yes	Yes	Yes
Bob Mulhere	Yes	Yes	Yes	No	Yes	Yes	Yes	Yes	Yes	No	Yes	Yes	Yes	No	No
Cecil Pendergrass	No	Yes	No	No	Yes	Yes	No	Yes	Yes	Yes	Yes	No	No	No	No
Charles Hines	Yes	No	No	No	Yes	No	No	Yes	Yes	Yes	No	Yes	Yes	No	Yes
Don McCormick	Yes	Yes	Yes	Yes	Yes	No	Yes	Yes	Yes	Yes	Yes	Yes	No	No	Yes
Donald Strenth	No	No	Yes	No	No	Yes	No	No	Yes	Yes	Yes	No	Yes	Yes	Yes
Donna Storter-Long	Yes	No	No	Yes	Yes	No	Yes	Yes	Yes	Yes	Yes	Yes	Yes	Yes	Yes
Emma Byrd / Karson Turner	Yes	No	No	No	No	No	Yes	No	No	No	Yes	Yes	Yes	Yes	No
Felipe Colon	No	No	No	No	No	No	No	No	No	No	No	No	No	No	No
Frank Mann / Brian Hamman / Frank Mann	Yes	Yes	Yes	Yes	Yes	Yes	Yes	Yes	Yes	Yes	Yes	Yes	No	No	Yes
Fred Burson / Forrest Banks	Yes	Yes	Yes	No	No	Yes	Yes	Yes	Yes	Yes	Yes	No	Yes	No	Yes
Gary Wein / Lynne Matthews	No	Yes	Yes	Yes	Yes	Yes	No	No	Yes	No	Yes	Yes	Yes	Yes	Yes
Greg DeWitt	No	Yes	Yes	Yes	Yes	Yes	Yes	Yes	No	No	Yes	Yes	No	Yes	No
Joe Tiseo	Yes	Yes	Yes	Yes	Yes	Yes	No	Yes	Yes	Yes	Yes	Yes	Yes	Yes	Yes
Julie Wilkins	Yes	Yes	Yes	Yes	Yes	Yes	Yes	Yes	Yes	No	No	Yes	Yes	Yes	Yes
Ken Doherty	No	Yes	Yes	Yes	Yes	Yes	Yes	Yes	Yes	Yes	Yes	Yes	Yes	Yes	Yes
Mel Karau	No	Yes	Yes	No	No	Yes	No	Yes	Yes	Yes	No	No	Yes	Yes	Yes
Michael Atkinson	Yes	No	No	No	No	No	No	No	No	No	No	No	No	Yes	Yes
Mick Denham	No	Yes	Yes	Yes	Yes	Yes	Yes	No	Yes	Yes	Yes	Yes	Yes	No	Yes
Mike Moran	Yes	Yes	No	No	No	No	No	Yes	Yes	No	No	Yes	No	No	No
Mitchell Wills	No	No	No	No	No	Yes	No	No	Yes	Yes	Yes	No	No	Yes	No
Mitzie Fiedler / Fred Fraize	Yes	No	Yes	Yes	Yes	Yes	Yes	Yes	Yes	Yes	Yes	Yes	No	Yes	Yes
Pat Lucas	No	No	No	No	No	No	No	No	No	No	No	No	No	No	No
Penny Taylor	Yes	No	Yes	Yes	Yes	No	No	No	Yes	No	No	Yes	No	No	Yes
Reg Buxton	Yes	Yes	Yes	No	Yes	No	No	No	No	No	No	No	No	No	No
Suzanne Graham	No	Yes	No	No	No	Yes	No	No	No	No	No	No	No	No	No
Thomas Perry	Yes	Yes	Yes	Yes	Yes	Yes	No	Yes	Yes	Yes	Yes	Yes	Yes	Yes	Yes
Willie Shaw	Yes	Yes	No	Yes	Yes	No	Yes	Yes	Yes	Yes	No	No	Yes	Yes	Yes

Vacated Seats

Al Reynolds	Yes														
Debbie McDowell	Yes	Yes	No	Yes	Yes	Yes									
Jessica Cosden / Jim Burch	Yes	Yes	Yes	Yes	Yes	Yes	Yes	Yes	Yes	Yes	Yes	No			
Jim Wilson	No	No	No	Yes	No	No									
Laura Holquist	No	No	No	No	No	No	No	No	No	No	No	No			

Total **20** **20** **18** **17** **20** **18** **14** **18** **22** **17** **17** **17** **15** **15** **18**

Bold/thick outlined boxes indicate when a new councilmember took over a seat

SOUTHWEST FLORIDA REGIONAL PLANNING COUNCIL (SWFRPC) ACRONYMS

ABM - Agency for Bay Management - Estero Bay Agency on Bay Management

ADA - Application for Development Approval

ADA - Americans with Disabilities Act

AMDA -Application for Master Development Approval

BEER - Bureau of Economic Business and Research at the University of Florida

BLID - Binding Letter of DRI Status

BLIM - Binding Letter of Modification to a DRI with Vested Rights

BLIVR -Binding Letter of Vested Rights Status

BPCC -Bicycle/Pedestrian Coordinating Committee

CAC - Citizens Advisory Committee

CAO - City/County Administrator Officers

CDBG - Community Development Block Grant

CDC - Certified Development Corporation (a.k.a. RDC)

CEDS - Comprehensive Economic Development Strategy (a.k.a. OEDP)

CHNEP - Charlotte Harbor National Estuary Program

CTC - Community Transportation Coordinator

CTD - Commission for the Transportation Disadvantaged

CUTR - Center for Urban Transportation Research

DEO - Department of Economic Opportunity

DEP - Department of Environmental Protection

DO - Development Order

DOPA - Designated Official Planning Agency (i.e. MPO, RPC, County, etc.)

EDA - Economic Development Administration

EDC - Economic Development Coalition

EDD - Economic Development District

EPA – Environmental Protection Agency

FAC - Florida Association of Counties

FACTS - Florida Association of CTCs

FAR - Florida Administrative Register (formerly Florida Administrative Weekly)

FCTS - Florida Coordinated Transportation System

FDC&F -Florida Department of Children and Families (a.k.a. HRS)

FDEA - Florida Department of Elder Affairs

FDLES - Florida Department of Labor and Employment Security

FDOT - Florida Department of Transportation

FHREDI - Florida Heartland Rural Economic Development Initiative

FIAM – Fiscal Impact Analysis Model

FLC - Florida League of Cities

FQD - Florida Quality Development

FRCA -Florida Regional Planning Councils Association

FTA - Florida Transit Association

IC&R - Intergovernmental Coordination and Review

IFAS - Institute of Food and Agricultural Sciences at the University of Florida

JLCB - Joint Local Coordinating Boards of Glades & Hendry Counties

JPA - Joint Participation Agreement

JSA - Joint Service Area of Glades & Hendry Counties

LCB - Local Coordinating Board for the Transportation Disadvantaged

LEPC - Local Emergency Planning Committee

MOA - Memorandum of Agreement

MPO - Metropolitan Planning Organization

MPOAC - Metropolitan Planning Organization Advisory Council

MPOCAC - Metropolitan Planning Organization Citizens Advisory Committee

MPOTAC - Metropolitan Planning Organization Technical Advisory Committee

NADO – National Association of Development Organizations

NARC -National Association of Regional Councils

NOPC -Notice of Proposed Change

OEDP - Overall Economic Development Program

PDA - Preliminary Development Agreement

REMI – Regional Economic Modeling Incorporated

RFB - Request for Bids

RFI – Request for Invitation

RFP - Request for Proposals

RPC - Regional Planning Council

SHIP -State Housing Initiatives Partnership

SRPP – Strategic Regional Policy Plan

TAC - Technical Advisory Committee

TDC - Transportation Disadvantaged Commission (a.k.a. CTD)

TDPN - Transportation Disadvantaged Planners Network

TDSP - Transportation Disadvantaged Service Plan

USDA - US Department of Agriculture

WMD - Water Management District (SFWMD and SWFWMD)



Apalachee • Central Florida
 East Central Florida • North Central Florida
 Northeast Florida • South Florida • Southwest Florida
 Tampa Bay • Treasure Coast • West Florida • Withlacoochee

104 West Jefferson Street, Tallahassee, FL 32301-1713 • 850.224.3427

Regional Planning Council Functions and Programs

March 4, 2011

- **Economic Development Districts:** Regional planning councils are designated as Economic Development Districts by the U. S. Economic Development Administration. From January 2003 to August 2010, the U. S. Economic Development Administration invested \$66 million in 60 projects in the State of Florida to create/retain 13,700 jobs and leverage \$1 billion in private capital investment. Regional planning councils provide technical support to businesses and economic developers to promote regional job creation strategies.
- **Emergency Preparedness and Statewide Regional Evacuation:** Regional planning councils have special expertise in emergency planning and were the first in the nation to prepare a Statewide Regional Evacuation Study using a uniform report format and transportation evacuation modeling program. Regional planning councils have been preparing regional evacuation plans since 1981. Products in addition to evacuation studies include Post Disaster Redevelopment Plans, Hazard Mitigation Plans, Continuity of Operations Plans and Business Disaster Planning Kits.
- **Local Emergency Planning:** Local Emergency Planning Committees are staffed by regional planning councils and provide a direct relationship between the State and local businesses. Regional planning councils provide thousands of hours of training to local first responders annually. Local businesses have developed a trusted working relationship with regional planning council staff.
- **Homeland Security:** Regional planning council staff is a source of low cost, high quality planning and training experts that support counties and State agencies when developing a training course or exercise. Regional planning councils provide cost effective training to first responders, both public and private, in the areas of Hazardous Materials, Hazardous Waste, Incident Command, Disaster Response, Pre- and Post-Disaster Planning, Continuity of Operations and Governance. Several regional planning councils house Regional Domestic Security Task Force planners.
- **Multipurpose Regional Organizations:** Regional planning councils are Florida's only multipurpose regional entities that plan for and coordinate intergovernmental solutions on multi-jurisdictional issues, support regional economic development and provide assistance to local governments.
- **Problem Solving Forum:** Issues of major importance are often the subject of regional planning council-sponsored workshops. Regional planning councils have convened regional summits and workshops on issues such as workforce housing, response to hurricanes, visioning and job creation.
- **Implementation of Community Planning:** Regional planning councils develop and maintain Strategic Regional Policy Plans to guide growth and development focusing on economic development, emergency preparedness, transportation, affordable housing and resources of regional significance. In addition, regional planning councils provide coordination and review of various programs such as Local Government Comprehensive Plans, Developments of Regional Impact and Power Plant Ten-year Siting Plans. Regional planning council reviewers have the local knowledge to conduct reviews efficiently and provide State agencies reliable local insight.

- **Local Government Assistance:** Regional planning councils are also a significant source of cost effective, high quality planning experts for communities, providing technical assistance in areas such as: grant writing, mapping, community planning, plan review, procurement, dispute resolution, economic development, marketing, statistical analysis, and information technology. Several regional planning councils provide staff for transportation planning organizations, natural resource planning and emergency preparedness planning.
- **Return on Investment:** Every dollar invested by the State through annual appropriation in regional planning councils generates 11 dollars in local, federal and private direct investment to meet regional needs.
- **Quality Communities Generate Economic Development:** Businesses and individuals choose locations based on the quality of life they offer. Regional planning councils help regions compete nationally and globally for investment and skilled personnel.
- **Multidisciplinary Viewpoint:** Regional planning councils provide a comprehensive, multidisciplinary view of issues and a forum to address regional issues cooperatively. Potential impacts on the community from development activities are vetted to achieve win-win solutions as council members represent business, government and citizen interests.
- **Coordinators and Conveners:** Regional planning councils provide a forum for regional collaboration to solve problems and reduce costly inter-jurisdictional disputes.
- **Federal Consistency Review:** Regional planning councils provide required Federal Consistency Review, ensuring access to hundreds of millions of federal infrastructure and economic development investment dollars annually.
- **Economies of Scale:** Regional planning councils provide a cost-effective source of technical assistance to local governments, small businesses and non-profits.
- **Regional Approach:** Cost savings are realized in transportation, land use and infrastructure when addressed regionally. A regional approach promotes vibrant economies while reducing unproductive competition among local communities.
- **Sustainable Communities:** Federal funding is targeted to regions that can demonstrate they have a strong framework for regional cooperation.
- **Economic Data and Analysis:** Regional planning councils are equipped with state of the art econometric software and have the ability to provide objective economic analysis on policy and investment decisions.
- **Small Quantity Hazardous Waste Generators:** The Small Quantity Generator program ensures the proper handling and disposal of hazardous waste generated at the county level. Often smaller counties cannot afford to maintain a program without imposing large fees on local businesses. Many counties have lowered or eliminated fees, because regional planning council programs realize economies of scale, provide businesses a local contact regarding compliance questions and assistance and provide training and information regarding management of hazardous waste.
- **Regional Visioning and Strategic Planning:** Regional planning councils are conveners of regional visions that link economic development, infrastructure, environment, land use and transportation into long term investment plans. Strategic planning for communities and organizations defines actions critical to successful change and resource investments.
- **Geographic Information Systems and Data Clearinghouse:** Regional planning councils are leaders in geographic information systems mapping and data support systems. Many local governments rely on regional planning councils for these services.

Agenda
Item

1

Invocation

1

1

	Agenda
	Item

2

Pledge of Allegiance

2

2

Agenda Item

3

Roll Call

3

3

Agenda Item

4

Public Comments

4

4

_____Agenda
_____Item

5

Agenda

5

5

Agenda

Item

6

Minutes

6

6

--- Agenda --- Item

7

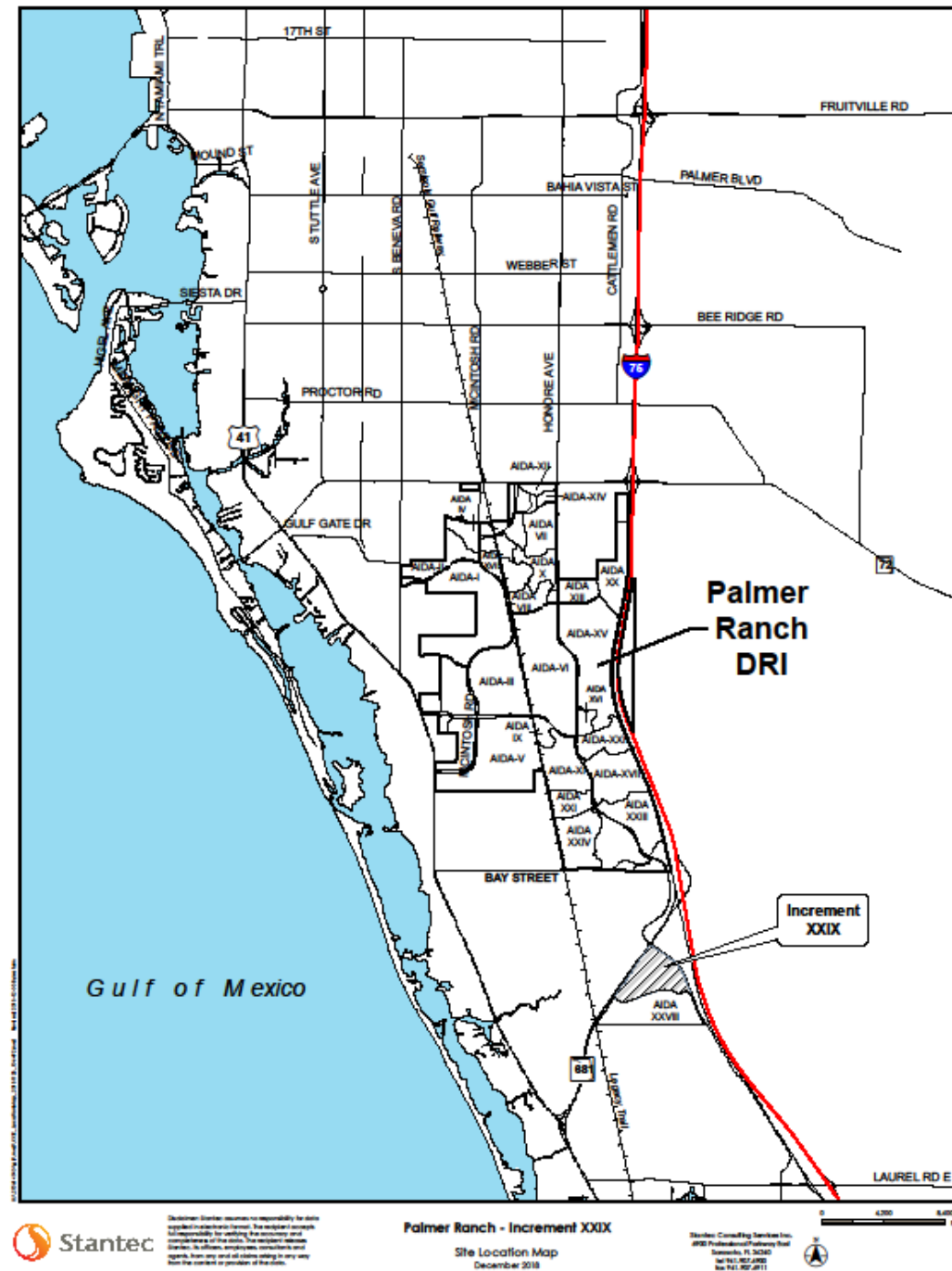
Regional Impact

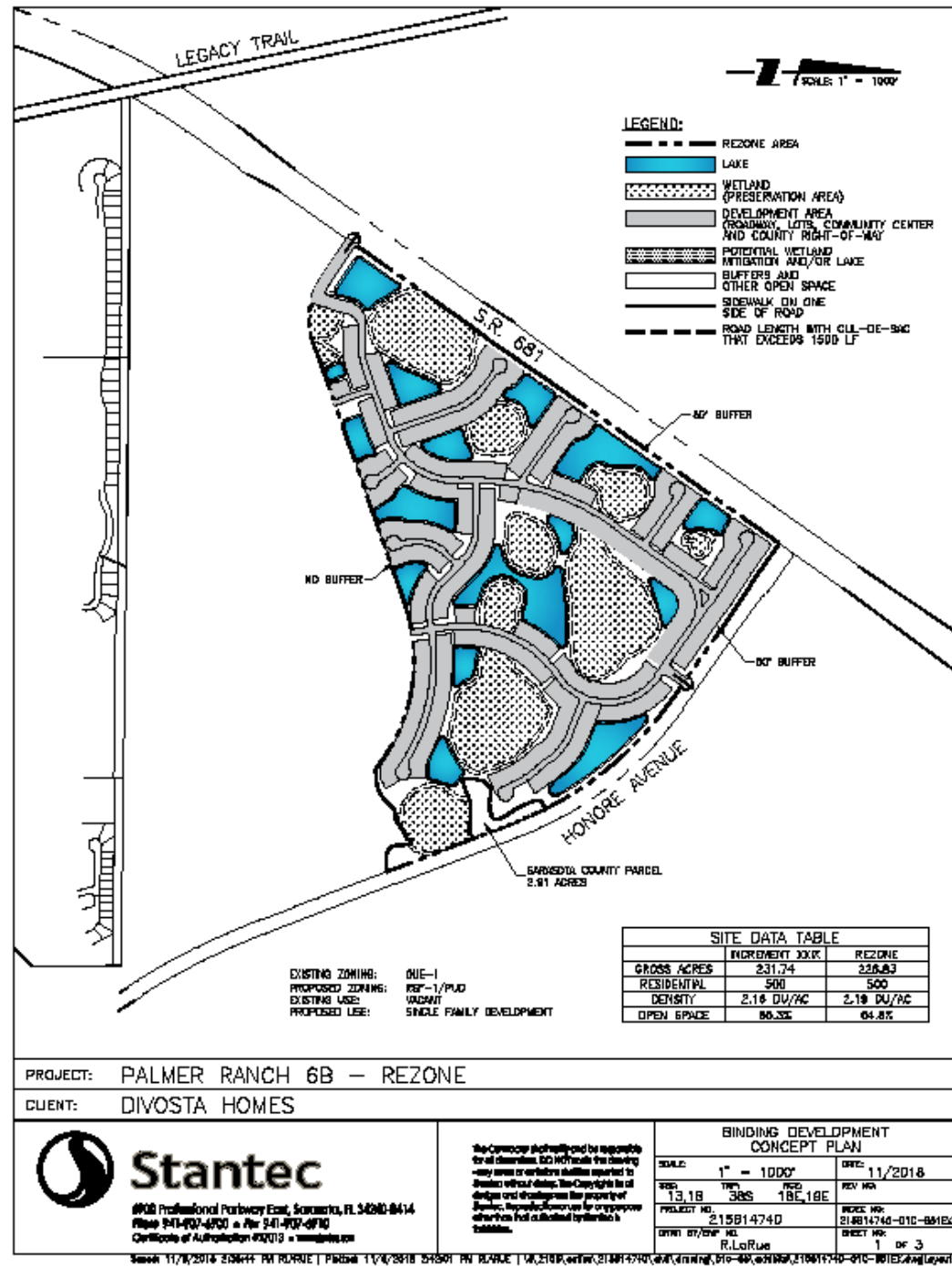
7

7

PALMER RANCH INCREMENT 29 - MASTER DEVELOPMENT ORDER INFORMATION REQUIREMENTS FOR DRI AIDA SUBMISSION

- On December 20, 2018, a Pre-Application meeting was held for the proposed Palmer Ranch Increment 29 DRI Application for Incremental Development Approval.
- The project is a proposed single-family development on the northern 228.83± acres of the Palmer Ranch Parcel 660 parcel, located south of SR 681 and west of Honore Avenue (see Attachment I).
- The contract purchaser, DiVosta/Pulte Homes intends to develop the northern 228.83± acres of the Palmer Ranch Parcel 660 as a planned residential development consisting of 500 single-family homes, a community center, lakes, wetland preserves, buffers and other open space (see Attachment II).
- Pursuant to the amended Master Development Order, all parties agreed to require the applicant to answer all applicable regional and local information requirements in Attachment III of agenda item.
- **RECOMMENDED ACTION:** Approve the questionnaire checklist.





--- Agenda --- Item

7a

Palmer Ranch Increment 29
Pre-App Checklist

7a

7a

PALMER RANCH INCREMENT 29 - MASTER DEVELOPMENT ORDER INFORMATION REQUIREMENTS FOR DRI AIDA SUBMISSION

Background

On December 20, 2018, a Pre-Application meeting was held for the proposed Palmer Ranch Increment 29 DRI Application for Incremental Development Approval. The project is a proposed single-family development on the northern 228.83± acres of the Palmer Ranch Parcel 660 parcel, located south of SR 681 and west of Honore Avenue (see Attachment I). Attending this meeting was the applicant and their consultants, Sarasota County development review staff and SWFRPC staff.

Project Description

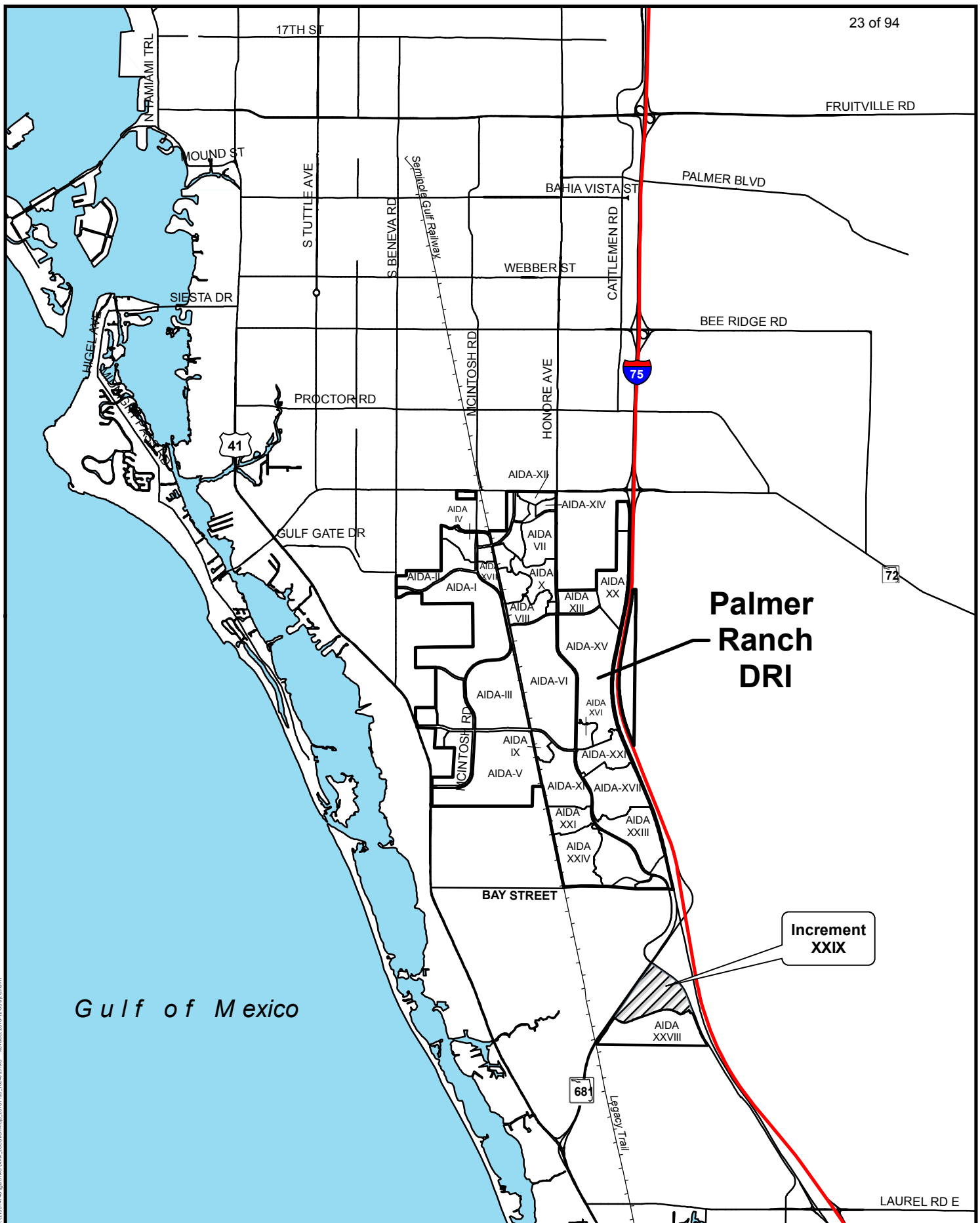
The contract purchaser, DiVosta/Pulte Homes intends to develop the northern 228.83± acres of the Palmer Ranch Parcel 660 as a planned residential development consisting of 500 single-family homes, a community center, lakes, wetland preserves, buffers and other open space (see Attachment II).

Questions for Palmer Ranch Increment

Pursuant to the amended Master Development Order, all parties agreed to require the applicant to answer all applicable regional and local information requirements (see Attachment III). As required by the MDO a recent revised and updated transportation reanalysis included impacts from Increment 29.

RECOMMENDED ACTION: Approve the questionnaire checklist.

January 17, 2018



D:\1514147\GIS\mxd\1514147.mxd LocationMap_1514147.mxd 12/18/2018 10:42:22 AM

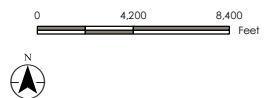


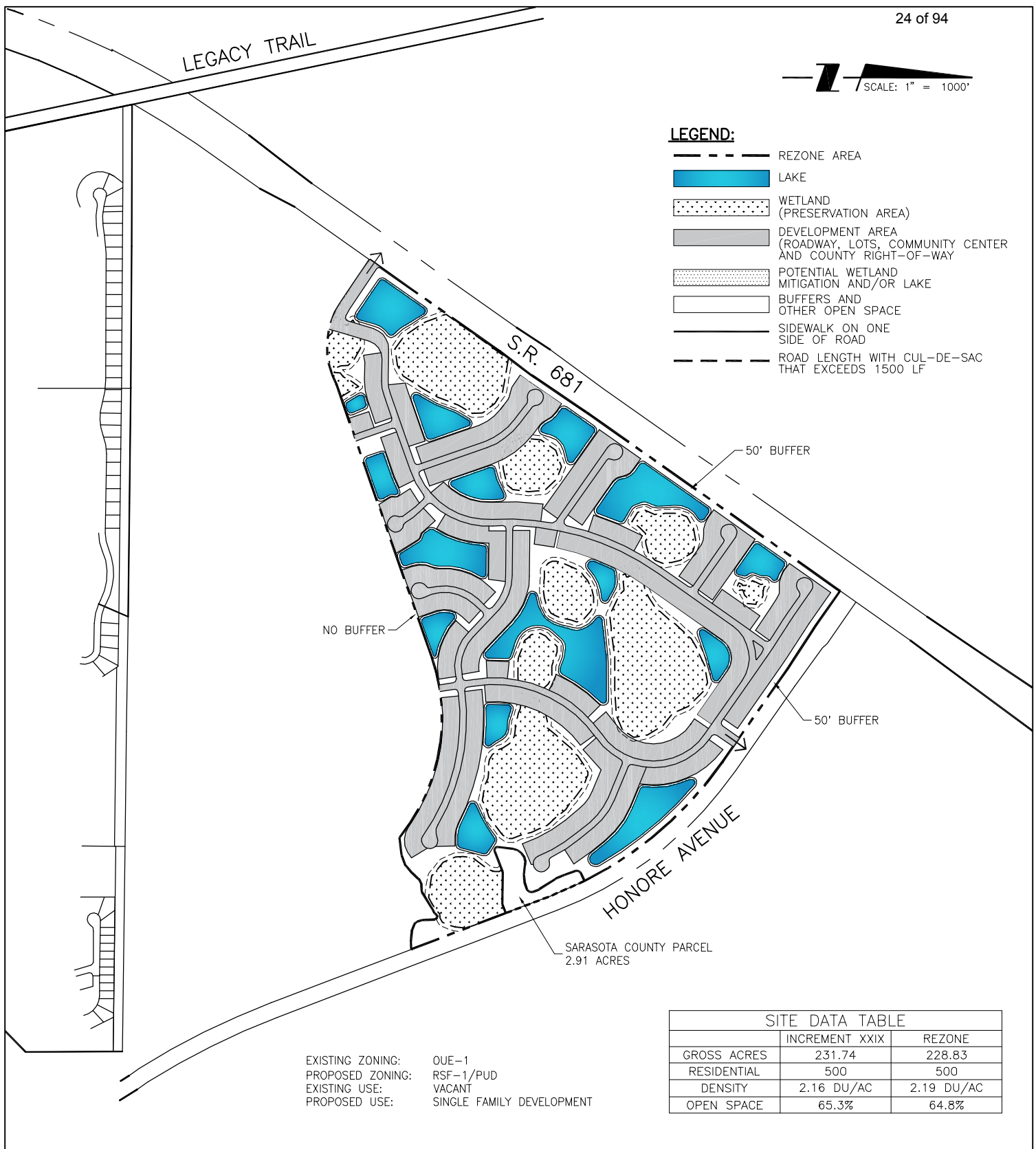
Disclaimer: Stantec assumes no responsibility for data supplied in electronic format. The recipient accepts full responsibility for verifying the accuracy and completeness of the data. The recipient releases Stantec, its officers, employees, consultants and agents, from any and all claims arising in any way from the content or provision of the data.

Palmer Ranch - Increment XXIX

Site Location Map
 December 2018

Stantec Consulting Services Inc.
 6900 Professional Parkway East
 Sarasota, FL 34240
 tel 941.907.6900
 fax 941.907.6911





PROJECT: PALMER RANCH 6B — REZONE

CLIENT: DIVOSTA HOMES



Stantec

6900 Professional Parkway East, Sarasota, FL 34240-8414
 Phone 941-907-6900 • Fax 941-907-6910
 Certificate of Authorization #27013 • www.stantec.com

The Contractor shall verify and be responsible for all dimensions. DO NOT scale the drawing - any errors or omissions shall be reported to Stantec without delay. The Copyrights to all designs and drawings are the property of Stantec. Reproduction or use for any purpose other than that authorized by Stantec is forbidden.

BINDING DEVELOPMENT CONCEPT PLAN

SCALE: 1" = 1000'	DATE: 11/2018
SEC: 13,18 TWP: 38S RGE: 18E,19E	REV NO:
PROJECT NO. 215614740	INDEX NO: 215614740-01C-851EX
DRWN BY/EMP NO. R.LaRue	SHEET NO: 1 OF 3

PALMER RANCH MASTER DEVELOPMENT ORDER QUESTIONNAIRE CHECKLIST FOR DRI-AIDA SUBMISSION

Subject	Question No.	Regionally Significant Y/N	Answer Required Y/N	Special Note
Palmer Ranch Master Development Order (Ordinance No. 2015-010, as amended)				
Questions Subject to Further Review in AIDA's				
General DRI AIDA Information	Part I & Part II	Y	Y	Submit Maps A, B, C.1. C.2, C.3, F.1, F.2, G.1, G.2, H.1 & I.2
Specific Conditions Air Quality	None	N	N	
Land/Soils	None	N	N	
Rare & Endangered Species	None	Y	Y	
Water Quality & Drainage	B. 1-4	Y	Y	Answer B. 1-4
Native Habitats	B. 1-3	Y	Y	Answer B. 1-3
Land Use/Housing	B. 2-3	Y	Y	Answer B. 2 & 3
Historical & Archeological		N	Y	
Recreation & Open Space	B. 1	N	Y	Answer B.1
Floodplain/Hurricane Evacuation	B. 1-2	Y	Y	Answer B. 1 & 2
Transportation	B. 1	Y	Y	Trip generation rates and site access issues
Wastewater	B. 1 & 2	N	Y	Answer B. 1 & 2
Water Supply	B. 1-3 & B. 4	N	Y	Answer B. 1-4
Solid Waste	B. 1	N	Y	Answer B.1
Police	B. 1	N	Y	Answer B.1
Fire Protection/Health Care	B. 1	N	Y	Answer B.1

SPECIFIC DRI INFORMATION – ADA Questionnaire (Form ~~DSP-BLWM-11-76~~ renumbered DEO-BCP ADA 1 on 10-01-11)

Applicant Information		Part I
Schools	A, B & C	Responses Part V, Q 27,

GENERAL

B. ISSUES SUBJECT TO FURTHER REVIEW IN AIDA'S

- 1 In all appropriate AIDA's, the Palmer Ranch shall respond to the following general questions as required in the Standardized Questionnaire for Developments of Regional Impact in Unincorporated Sarasota County:

Part I

- A. Statement of Intent
- B. Applicant Information
- C. Development Information
- D. Permit Information
- E. Statement of Purpose

Part II

- A. General DRI Information
- B. Maps
- C. General Project Description

WATER QUALITY & DRAINAGE

B. ISSUES SUBJECT TO FURTHER REVIEW IN AIDA'S

1. Concurrent with each AIDA submitted for any development parcel, the appropriate Watershed Management Plan shall be updated and submitted to Sarasota County. The Southwest Florida Regional Planning Council shall be provided with a copy of any updates.
2. Any subsequent Application for Incremental Development Approval (AIDA) for the Palmer Ranch shall include an environmental and surface water management plan for the increment documenting consistency with the Little Sarasota Bay Watershed Management Plan. This plan shall be reviewed and approved by appropriate county departments as determined at the time of submittal.
3. The Palmer Ranch shall adhere to the Little Sarasota Bay Watershed Management Plan and all applicable drainage basin models. The drainage basin models shall be updated to assess any future changes in land use within the applicable areas of the Palmer Ranch.
4. The Applicant shall be responsible for any corrective actions required for the maintenance of stormwater management systems which is not specifically the responsibility of Sarasota County.

NATIVE HABITATS

B. ISSUES SUBJECT TO FURTHER REVIEW IN AIDA'S

1. Wetland modifications/alterations on the east side shall be as shown on Map F2 (Exhibit F), unless otherwise approved by Sarasota County. The total area of wetland habitat preserve may be slightly reduced resulting from unavoidable impacts necessitated by internal parcel roadway and infrastructure requirements as identified in subsequent Applications for Incremental Development Approval (AIDA's). All alterations in wetlands which result in a loss of habitat shall be mitigated. The amount of mitigation needed to offset alterations that result in loss of

wetland habitat shall be determined by the Uniform Mitigation Assessment Method (UMAM) Chapter 62-345 Florida Administrative Code. In instances where the UMAM requirements do not apply, mitigation shall be on a one- to-one basis for wet prairies and sloughs and a three-to-one basis for swamps and heads. All wetland mitigation shall be accomplished within the "Wetland Restoration/Rehydration Target Areas" shown on Map G2.I (Exhibit I).

Any future request to slightly reduce the total area of wetland habitat preserve shall be addressed as part of the appropriate Application for Incremental Approval (AIDA). The rationale for alteration and the alternatives that were investigated to either limit or eliminate the need for wetland alterations shall be provided by the Applicant as part of appropriate AIDA's. Specific details of any wetland alteration/modification and appropriate mitigation, monitoring and maintenance plans shall be submitted to Sarasota County for review and approval at the preliminary plan or site and development plan stage. These plans shall address the criteria contained in "The Environmental and Surface Water Management, Maintenance and Monitoring Manual for the Palmer Ranch." Said alterations and/or required mitigation shall be consistent with the Management Guidelines of the Environment Chapter of the Sarasota County Comprehensive Plan, County approved mitigation monitoring and maintenance plans, the intent of the MDO commitment of preserving both wetland habitats and mitigation areas, and subject to the review and approval by Sarasota County.

2. In accordance with the MDO commitments, all undisturbed wetlands, mitigation areas and required upland vegetative buffers shall be maintained as preservation areas, labeled preservation areas on all plans, and whenever practical, recorded as separate tracts on final plats. All preserve areas shall be maintained in compliance with resource management plans (including identification of responsible entity) submitted as part of appropriate AIDA's, subject to review and approval by the County.
3. Open space areas shall be depicted on the appropriate AIDA's to ensure that preservation, conservation/open space areas, wildlife corridors, wetland restoration, mitigation and littoral zone target areas are used first to fulfill open space requirements. A breakdown of open space with an indication of where the proposed open space balance would be allocated in the future shall be submitted with each AIDA, thereby demonstrating compliance with this requirement. Any proposed reallocation of open space types shall a) not involve either designated preservation areas or lands within existing eagle primary protection zones, b) not create a net loss of open space, and c) be justified by the Applicant and approved by Sarasota County through the AIDA or subsequent amendment process. Any proposed modifications complying with these criteria shall not be deemed a substantial deviation pursuant to Chapter 380, Florida Statutes.

LAND USE/HOUSING

B. ISSUES SUBJECT TO FURTHER REVIEW IN AIDA'S

1. Estimate the population increases in each AIDA according to any phasing of development. Indicate the ultimate functional and resident population, and areas of population concentration in each AIDA area.
2. Provide the following demographic and housing information. If specific demographic information is not available, use County-wide data.
 - a. Number of persons per household.

- b. Number of children per household.
- c. Number of elderly per household (Age 65 years and older).
- d. Total number of housing units to be built. Indicate type of housing (i.e., single family, duplex, cluster, multi-family), and tenure (i.e., owner occupied versus renter occupied).
- e. Anticipated first year of home sales.
- f. Projected final year of home sales.
- g. Projected number of sales per year by housing type and tenure.
- h. Estimated average sales price per year until build-out occurs.

RECREATION AND OPEN SPACE

B. ISSUES SUBJECT TO FURTHER REVIEW IN AIDA'S

- 1. Indicate the size, location (Map H-2), ownership and type of all proposed recreation and open space areas. The bicycle and pedestrian circulation systems shall be delineated on each subsequent Map H-2 or on an updated Map-1-2/ MPCP Master Pedestrian and Circulation Plan.

FLOODPLAIN/HURRICANE EVACUATION

B. ISSUES SUBJECT TO FURTHER REVIEW IN AIDA'S

- 1. If the area is subject to category 2 or 3 flooding, information shall be submitted concerning expected flooding levels, building elevations, and shelter plans, as well as any other information deemed necessary.
- 2. The Palmer Ranch shall consult with Sarasota County, prior to the site and development stage of each AIDA. Sarasota County Emergency Services will review each facility to be used as an emergency shelter, to determine whether it is adequate for a storm shelter. In addition, all evacuation routes shall be reviewed to determine their adequacy in the event of an emergency.

TRANSPORTATION

B. ISSUES SUBJECT TO FURTHER REVIEW IN AIDA'S

- 1. Palmer Ranch shall continue to provide reanalysis for the DRI pursuant to the requirements of the Settlement Stipulation described in Resolution No. 87-549 and consistent with the methodologies utilized in prior analyses adopted by Sarasota County Resolution Nos. 89-98 and 95-231, as described in the Stipulation of Settlement (Exhibit J). The review of subsequent Transportation issues in AIDA's shall be limited to providing trip generation information demonstrating consistency with the Transportation reanalysis and demonstrating adequate site access.

WASTEWATER

B. ISSUES SUBJECT TO FURTHER REVIEW IN AIDA'S

- 1. The Palmer Ranch shall update all projected wastewater flows for each AIDA project.
- 2. Each AIDA shall include average daily flow in MGD of wastewater generated by each development at the end of each phase.

WATER SUPPLY

B. ISSUES SUBJECT TO FURTHER REVIEW IN AIDA'S

1. Potable Water - Each AIDA shall identify potable water needs and the most feasible sources to satisfy potable water demands.
2. Non-potable Water - Each AIDA shall have definitive land use plans which quantify the irrigation and other non-potable water demands and detail the non-potable water supply source to satisfy demands.
3. If any water wells exist, they shall be located during site investigations for each AIDA, at which time, proposed well locations and other information required for non-potable use shall also be delineated and presented in AIDA documents.
4. Parcels within each AIDA are required to connect to Sarasota County Public Utilities reclaimed water systems when reasonably available. In cases where a connection to reclaimed water is not readily available, then the development shall be constructed with the underground infrastructure needed to establish a reclaimed connection at a future date. Sarasota County's Utility Director is authorized to determine the configuration of are claimed water connection or future reclaimed water connection, or waive this requirement in cases where the Utility Director deems the connection requirement impractical.

SOLID WASTE

B. ISSUES SUBJECT TO FURTHER REVIEW IN AIDA'S

1. The Palmer Ranch shall provide in each AIDA a letter from the Sarasota County Director of Solid Waste indicating the amount of current excess capacity to accommodate the additional refuse.

POLICE

B. ISSUES SUBJECT TO FURTHER REVIEW IN AIDA'S

1. The Palmer Ranch shall indicate the demand that will be generated by each AIDA for police services.

FIRE PROTECTION/HEALTH CARE

B. ISSUES SUBJECT TO FURTHER REVIEW IN AIDA'S

1. The Palmer Ranch shall indicate the demand that will be generated by each AIDA for police services.

SPECIFIC DRI INFORMATION

In the appropriate AIDA's the Palmer Ranch shall respond to the following questions as required in ADA Questionnaire (Form DSP-BLWM-11-76 Note: Renumbered DEO-BCP ADA 1, 10-01-11):

Question ~~42-27~~- Schools. (Responses A and B).

- A. If the development contains residential units, estimate the number of school age children expected to reside in the development. Use class breakdowns appropriate to the area in which the development is located (specify on chart below):

Phase	Elementary	Middle	High	Total
Existing				
Phase(s)				
Total				

- B. Will school facilities or sites be dedicated or otherwise provided on the site?
- C. Attach a letter from the appropriate school board, acknowledging receipt of the estimated school age population information in (A) above, and providing a statement of what capital improvement adjustments would be necessary to accommodate these students.

SARASOTA COUNTY COMPREHENSIVE PLAN

ENV Policy 1.3.13

Developments surrounding Oscar Scherer State Park, the Scherer-Thaxton Preserve, Myakka River State Park and Myakka State Forest shall avoid, minimize, and mitigate impacts through special measures that address: water quality and quantity, light and noise pollution, strategies to buffer these lands, wildlife movement, and land management practices.

Agenda

Item

8

Consent Agenda

8

8

Consent Agenda Summary

Agenda Item # (a) - Intergovernmental Coordination and Review

The attached report summarizes the project notifications received from various governmental and non-governmental agencies seeking federal assistance or permits for the period beginning December 1, 2018 and ending January 4, 2019.

RECOMMENDED ACTION: Approval of the administrative action on Clearinghouse Review items

--- Agenda Item ---

8a

Intergovernmental Coordination
and Review

8a

8a

Project Review and Coordination Regional Clearinghouse Review

The attached report summarizes the project notifications received from various governmental and non-governmental agencies seeking federal assistance or permits for the period beginning December 1, 2018 and ending January 4, 2019.

The staff of the Southwest Florida Regional Planning Council reviews various proposals, Notifications of Intent, Preapplications, permit applications, and Environmental Impact Statements for compliance with regional goals, objectives, and policies of the Regional Comprehensive Policy Plan. The staff reviews such items in accordance with the Florida Intergovernmental Coordination and Review Process (Chapter 29I-5, F.A.C.) and adopted regional clearinghouse procedures.

Council staff reviews projects under the following four designations:

Less Than Regionally Significant and Consistent - no further review of the project can be expected from Council.

Less Than Regionally Significant and Inconsistent - Council does not find the project to be of regional importance but notes certain concerns as part of its continued monitoring for cumulative impacts within the noted goal areas.

Regionally Significant and Consistent - Project is of regional importance and appears to be consistent with Regional goals, objectives and policies.

Regionally Significant and Inconsistent - Project is of regional importance and appears not to be consistent with Regional goals, objectives, and policies. Council will oppose the project as submitted but is willing to participate in any efforts to modify the project to mitigate the concerns.

The report includes the SWFRPC number, the applicant name, project description, location, funding or permitting agency, and the amount of federal funding, when applicable. It also includes the comments provided by staff to the applicant and to the FDEP-State Clearinghouse in Tallahassee.

RECOMMENDED ACTION: Approval of the administrative action on Clearinghouse Review items.

ICR Council 2018-19						
SWFRPC #	Contact	Agency	Location	Project Description	Funding Agent	Council Comment
2018-11	Richard Kolar	Charlotte County Transit	Charlotte County	49 USC Section 5311 Operating Assistance Program- Continuation of Rural Transit Service	FDOT	Regionally Significant
2018-12	Richard Kolar	Charlotte County Transit	Charlotte County	49 USC Section 5310 Operating Assistance Program- Small Urban Area Service	FDOT	Regionally Significant
2018-13	Richard Kolar	Charlotte County Transit	Charlotte County	49 USC Section 5307- Operating and Capital Expenses	FDOT	Regionally Significant
2018-14	Fred Fox	Fred Fox Enterprises	Glades County	Glades County Neighborhood Revitalization	DEO-CDBG	Regionally Significant
2018-15	J. Corbett Alday	Guardian CRM	City of LaBelle	City of LaBelle Water and Sewer Improvement Project	DEO-CDBG	Regionally Significant
2019-01	Joshua Thomas	Collier County Transit	Collier County	49 USC Section 5339 Capital Assistance Application – SFY 2020: Collier County Bus Facility	FDOT	Regionally Significant

Agenda

Item

9

Presentations

9

9

--- Agenda --- Item

9a

South Florida Water Management
District

9a

9a

--- Agenda --- Item

9b

Master Wetland Mitigation
Strategy

9b

9b

Development of an improved model watershed scale master wetland mitigation strategy for restoration, protection and public projects for local governments.

Demonstrate the effectiveness of local government scale mitigation planning coordinated with future public works projects in achieving the goals of wetland and water quality protection, watershed restoration, and completion of necessary public infrastructure projects.

Project Goals

- Develop an improved model local government watershed scale wetland mitigation strategy for wetland restoration, wetland protection, and water quality improvement and public project mitigation at the local government scale that is transferable to other Florida counties.
- Depending upon the parameters in other States this will likely be transferrable to other local governments in other States that have a governance system similar to the Florida's.

How to Do a Master Mitigation Plan (Lee County Example)

Review of the existing Lee County Mitigation Plan

Lee County Master Mitigation Plan
(Environmental Quality Investment and Growth Mitigation Strategic Plan)

May 16, 2007

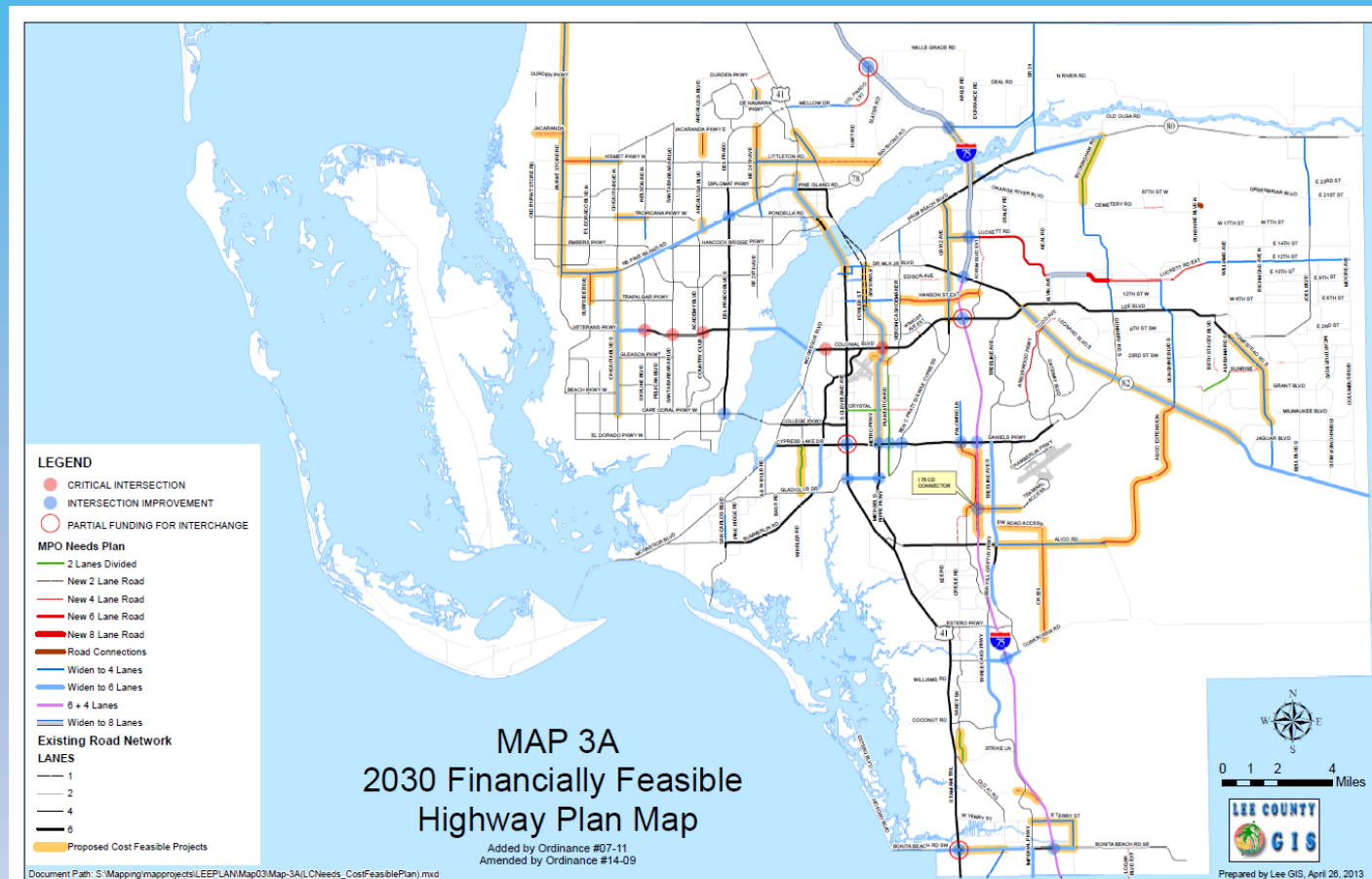
Calculation of the ecosystem services values for the collected mitigation projects using the ECOSERVE total ecosystem services method

42 of 94

Project	Total Pre-construction Total Ecosystem Services Value (TEV) per year	Total Post-construction TEV per year	Net TEV gain	NET TEV gain/acre
Ten-Mile Filter Marsh Canal	\$111,674.38	\$467,647.38	\$355,973.00	\$12,921.82.
Estero Marsh Preserve	\$141,653.86	\$23,405,013.17	\$23,263,359.30	\$95,353.36
Briarcliff Canal Filter Marsh	\$60,806.70	\$254,634.00	\$193,827.30	\$12,921.82.
Totals	\$314,134.94	\$24,127,294.55	\$23,813,159.30	

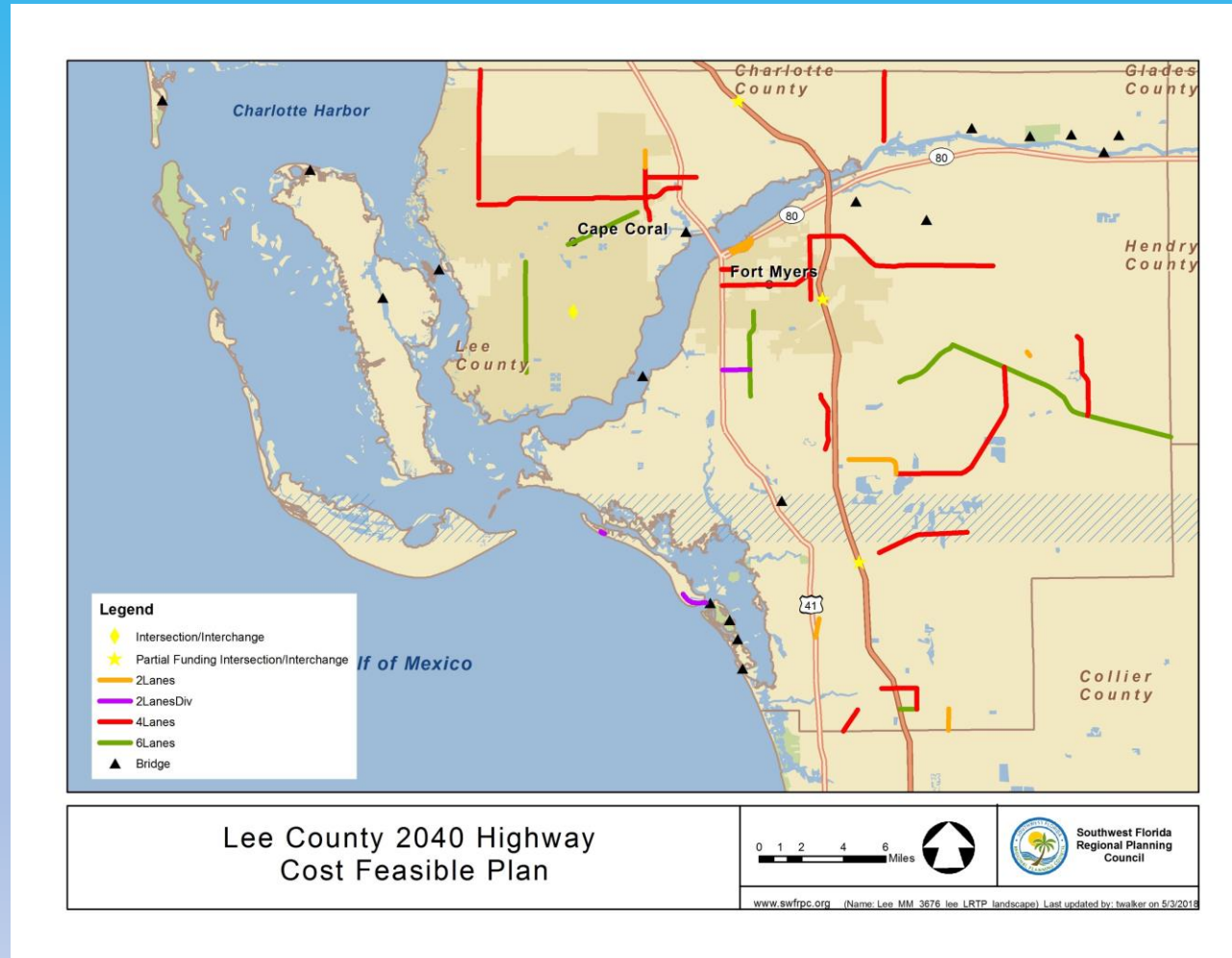
Development of the new list of upcoming public infrastructure projects for the projected planning future with the compatible in watershed mitigation project

43 of 94



Step 1: Collect data on the proposed road, rail, port, airport, public transit, and utilities projects proposed within the plan timeframe

44 of 94



LEGEND

- CRITICAL INTERSECTION
- INTERSECTION IMPROVEMENT
- PARTIAL FUNDING FOR INTERCHANGE

MPO Needs Plan

- 2 Lanes Divided
- New 2 Lane Road
- New 4 Lane Road
- New 6 Lane Road
- New 8 Lane Road
- Road Connections
- Widen to 4 Lanes
- Widen to 6 Lanes
- 6 + 4 Lanes
- Widen to 8 Lanes

Existing Road Network

LANES

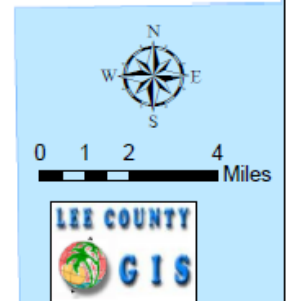
- 1
- 2
- 4
- 6

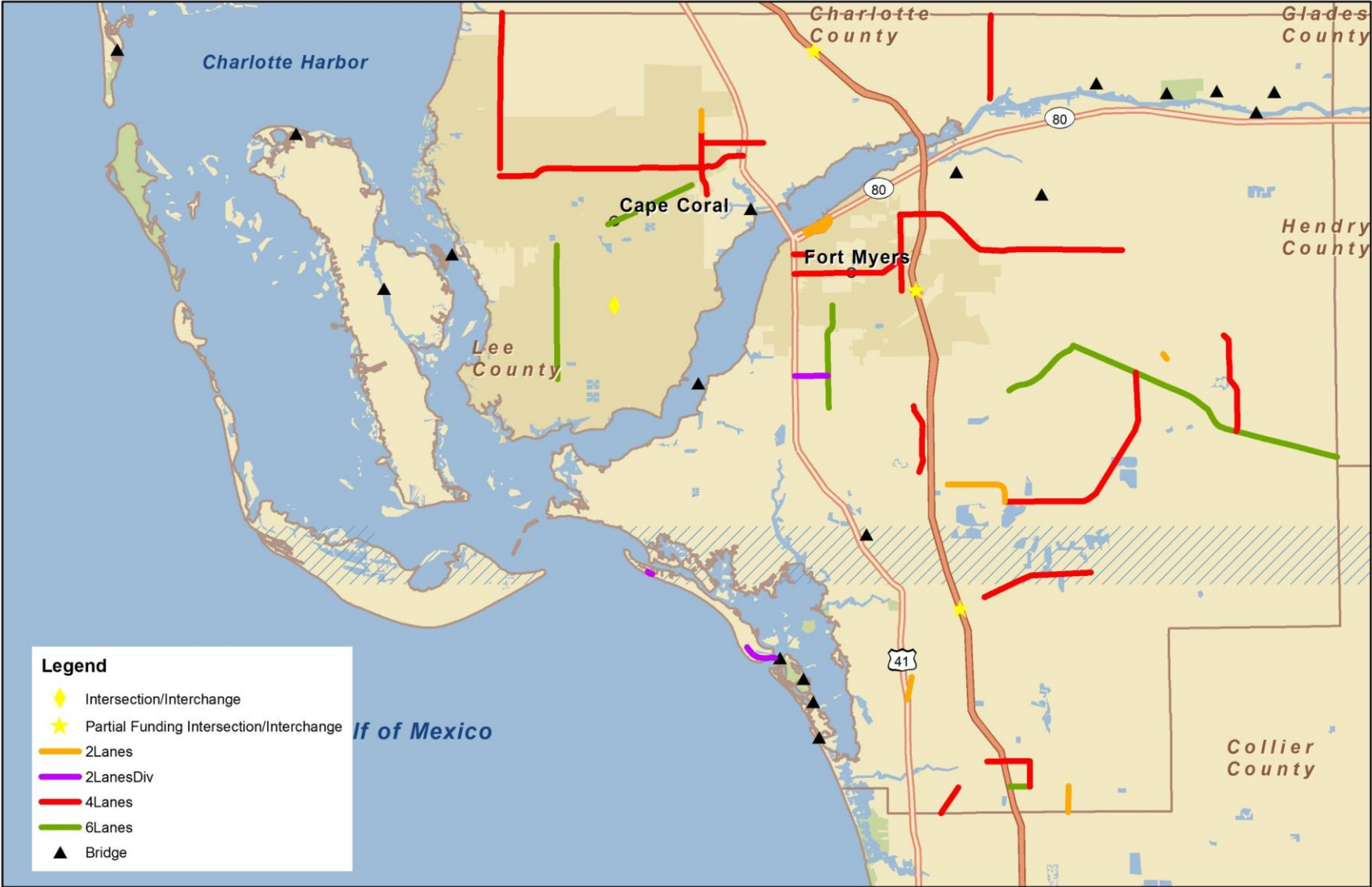
— Proposed Cost Feasible Projects

MAP 3A

2030 Financially Feasible Highway Plan Map

Added by Ordinance #07-11
Amended by Ordinance #14-09





Lee County 2040 Highway Cost Feasible Plan

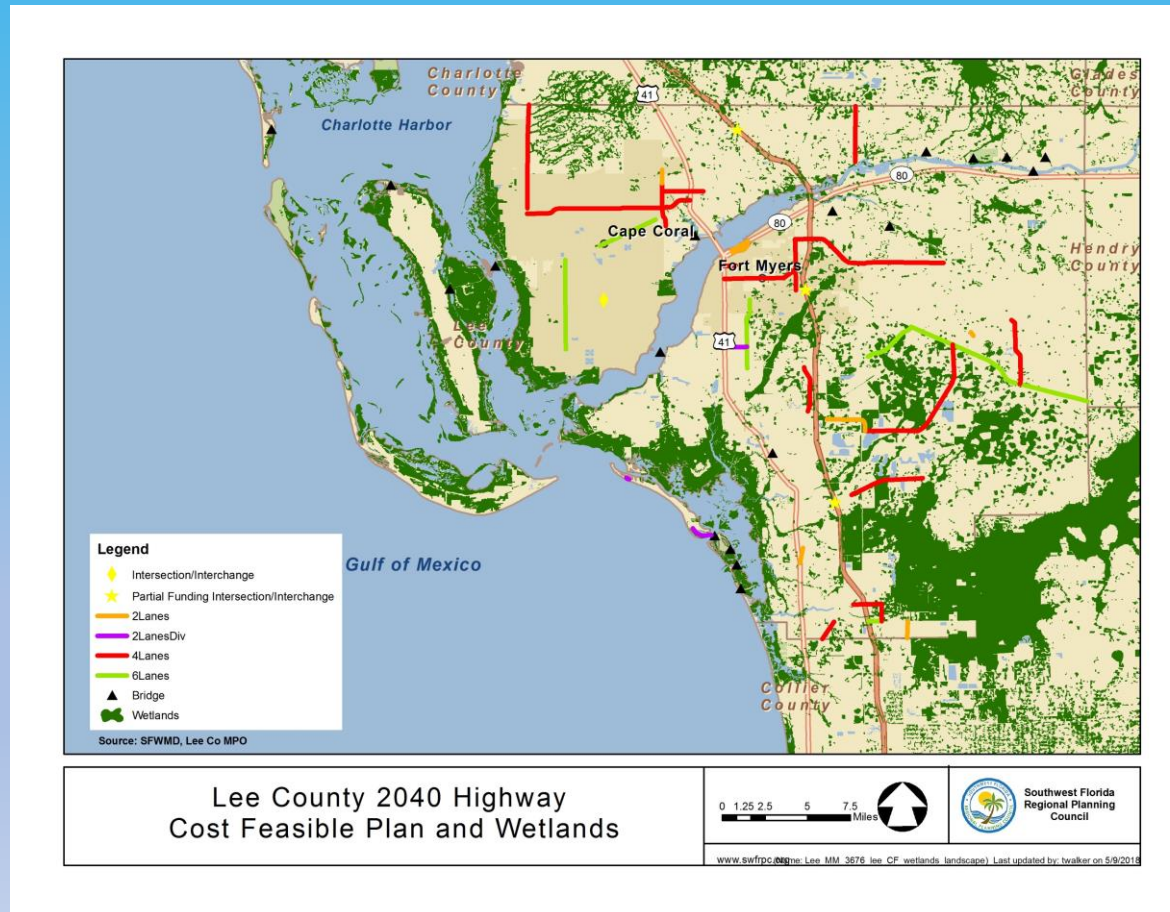
0 1 2 4 6 Miles

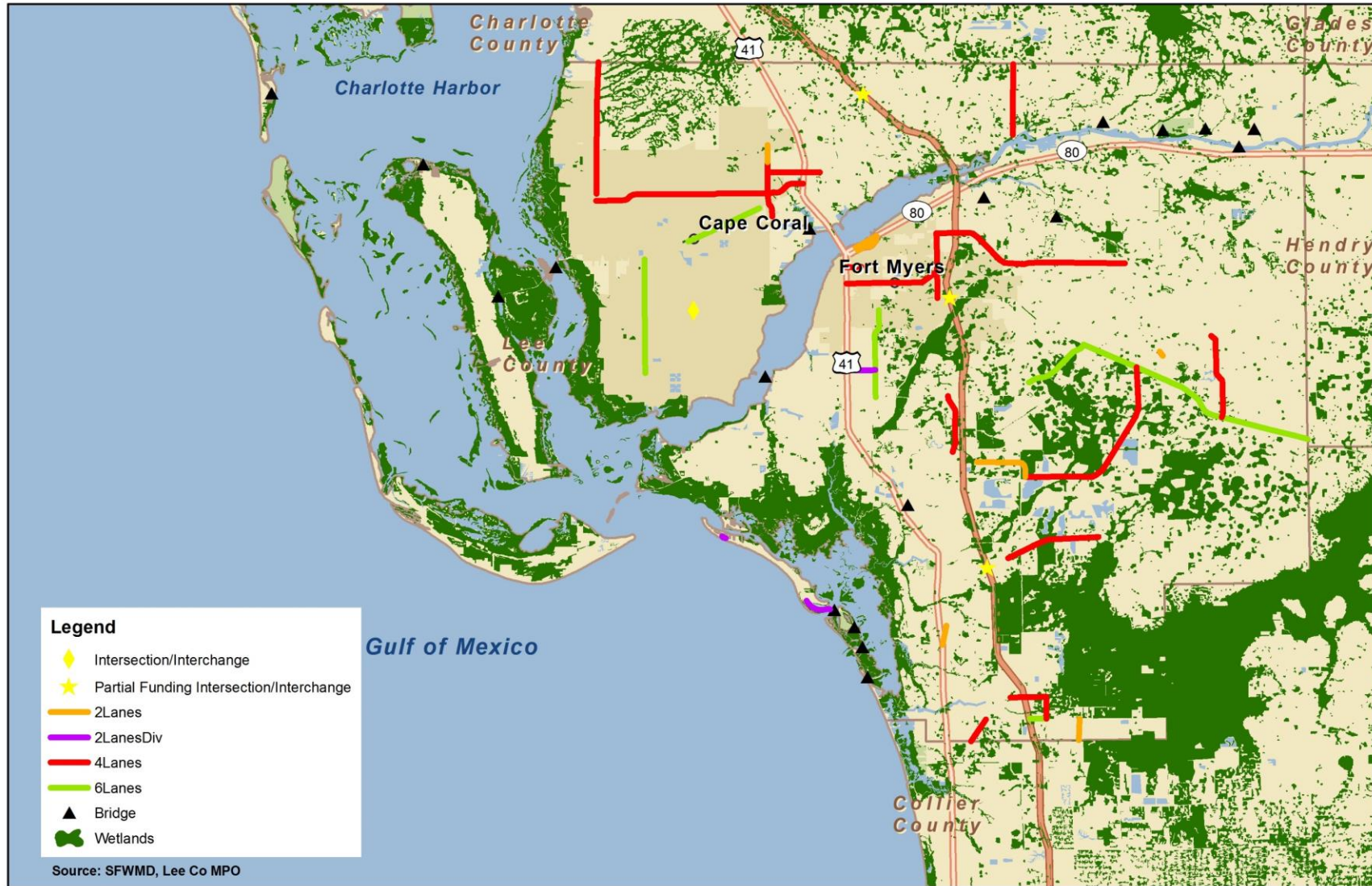
Southwest Florida
Regional Planning
Council

www.swfRPC.org (Name: Lee MM 3676 lee LRTP landscape) Last updated by: twalker on 5/3/2018

Step 2: Overlay projects with maps of wetlands, listed species, conservation lands, and conservation easements. (This could also include archeological and cultural features)

47 of 94





Lee County 2040 Highway Cost Feasible Plan and Wetlands

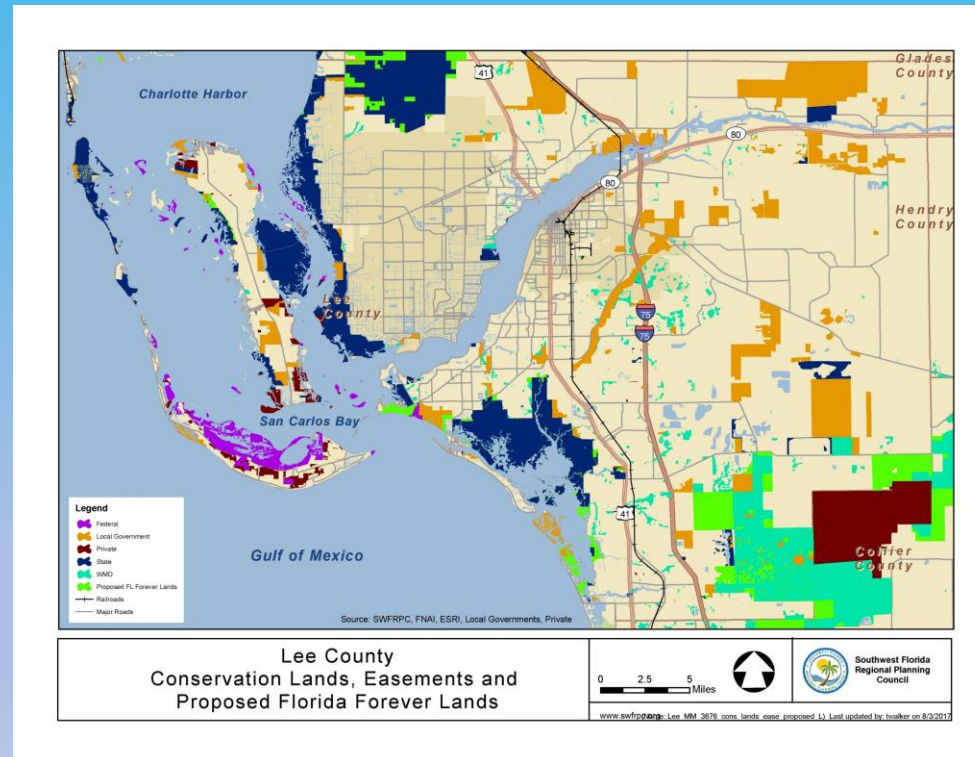


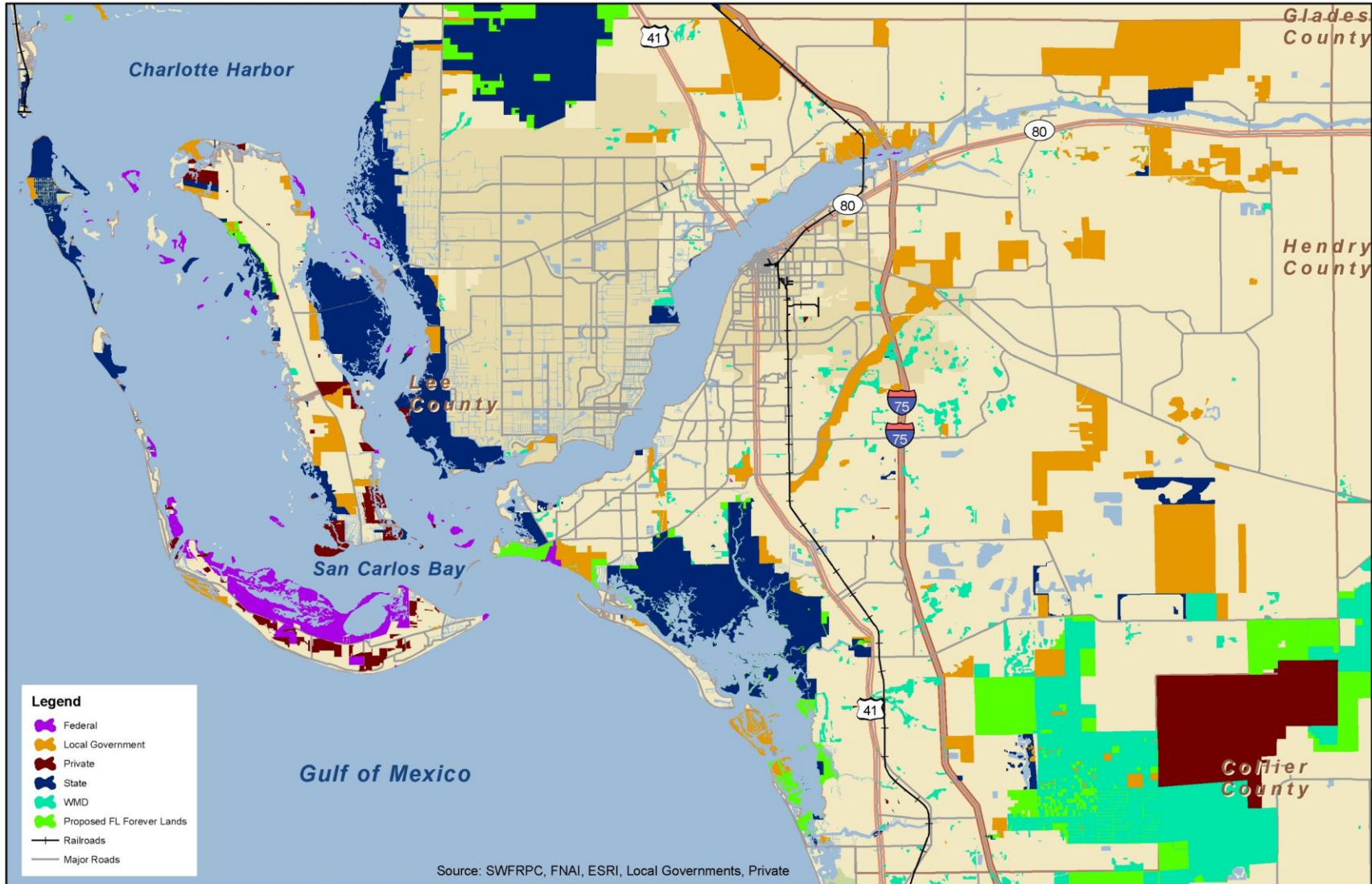
Southwest Florida
Regional Planning
Council

Step 3: Quantify the intersection of the projects with the wetland resources

ID	Location	Lanes	Length in wetlands (ft)	Size of Lane (ft)	Area (square feet)	Acres of Impact
1	3 Oaks Pkwy Ext	4	2,650.29	68	180,219.84	4.14
2	Alico Green Meadows	4	14,280.90	68	971,101.42	22.29
3	Ben Hill to Alico	2	5,565.65	44	244,888.44	5.62
4	Burnt Store Rd	4	1,078.83	68	73,360.19	1.68
5	Corkscrew Rd	4	5,520.14	68	375,369.28	8.62
6	Diplomat Pkwy	4	54.53	68	3,707.89	0.09
7	E Terry St/Bonita Grande	4	5,246.39	68	356,754.52	8.19
8	Hanson Ext	4	83.52	68	5,679.62	0.13
9	Logan Ext	2	8.13	44	357.73	0.01
10	Luckett Ext	4	3,189.72	68	216,901.04	4.98
11	NE 24th Ave Ext	2	1,124.64	44	49,484.28	1.14
12	Seaboard St	2	540.01	44	23,760.46	0.55
13	SR 82	6	561.49	92	51,656.90	1.19
14	State Road 82	6	2,999.76	92	275,977.85	6.34
	Total					64.95

Step 4: Gather information of the conservation needs of local government, state government, federal government and Non-governmental conservation lands along with available mitigation banks.





Lee County Conservation Lands, Easements and Proposed Florida Forever Lands

0 2.5 5 Miles



Southwest Florida
Regional Planning
Council

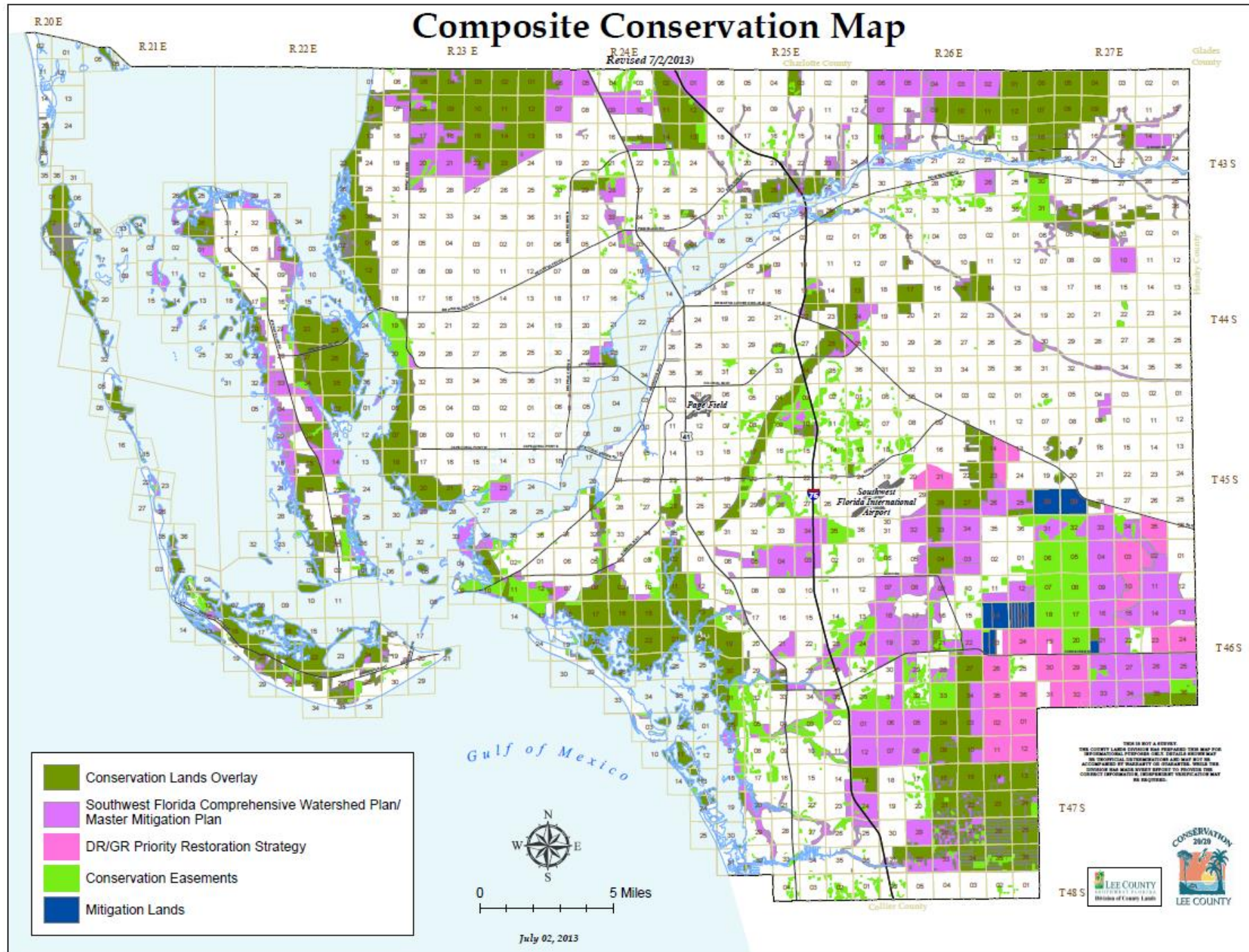
www.swfrpc.org Lee MM 3676 cons lands ease proposed L Last updated by: twalker on 8/3/2017

Updated Lee County Master Mitigation Plan (LCMMP)

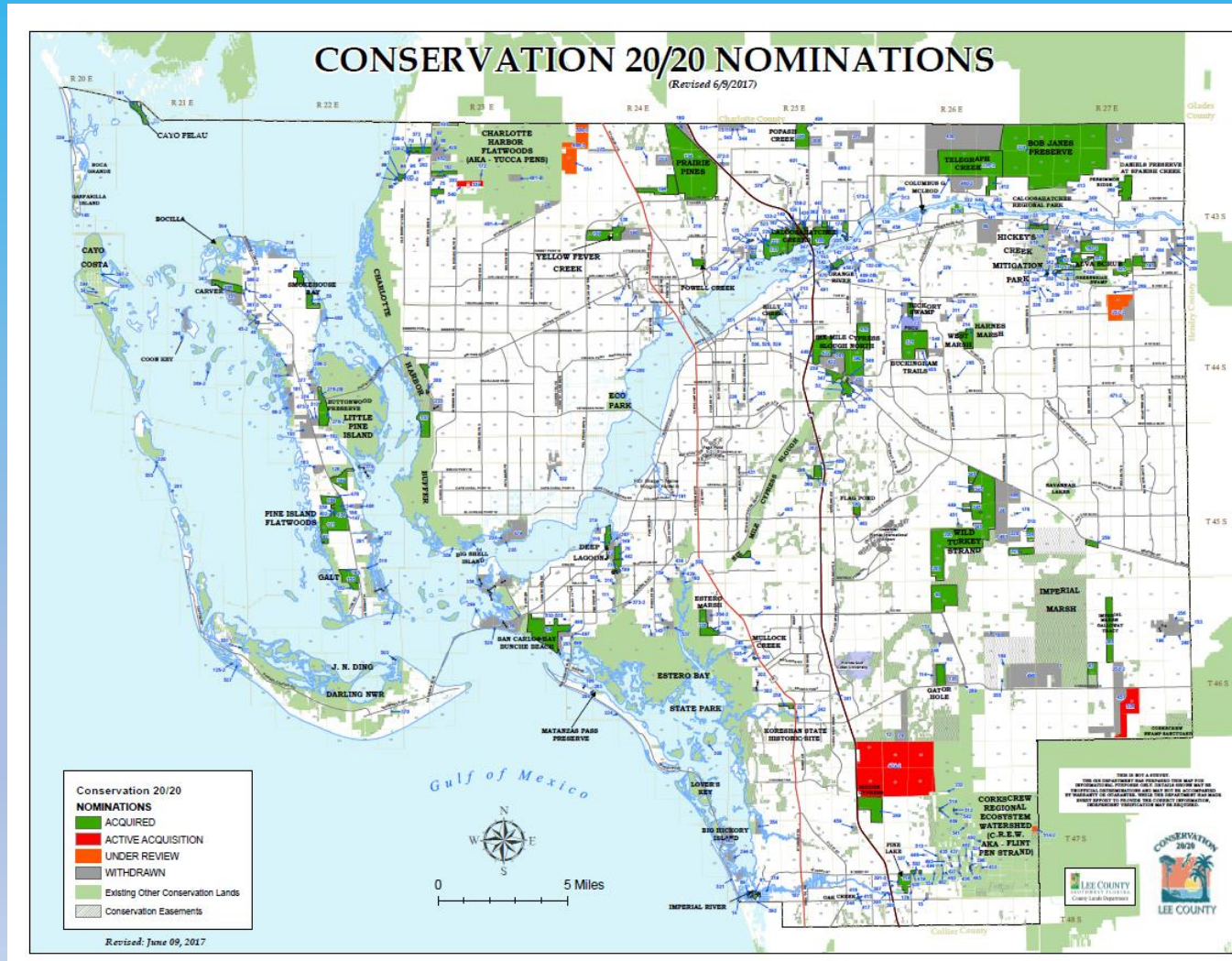


Composite Conservation Map

Revised 7/2/2013



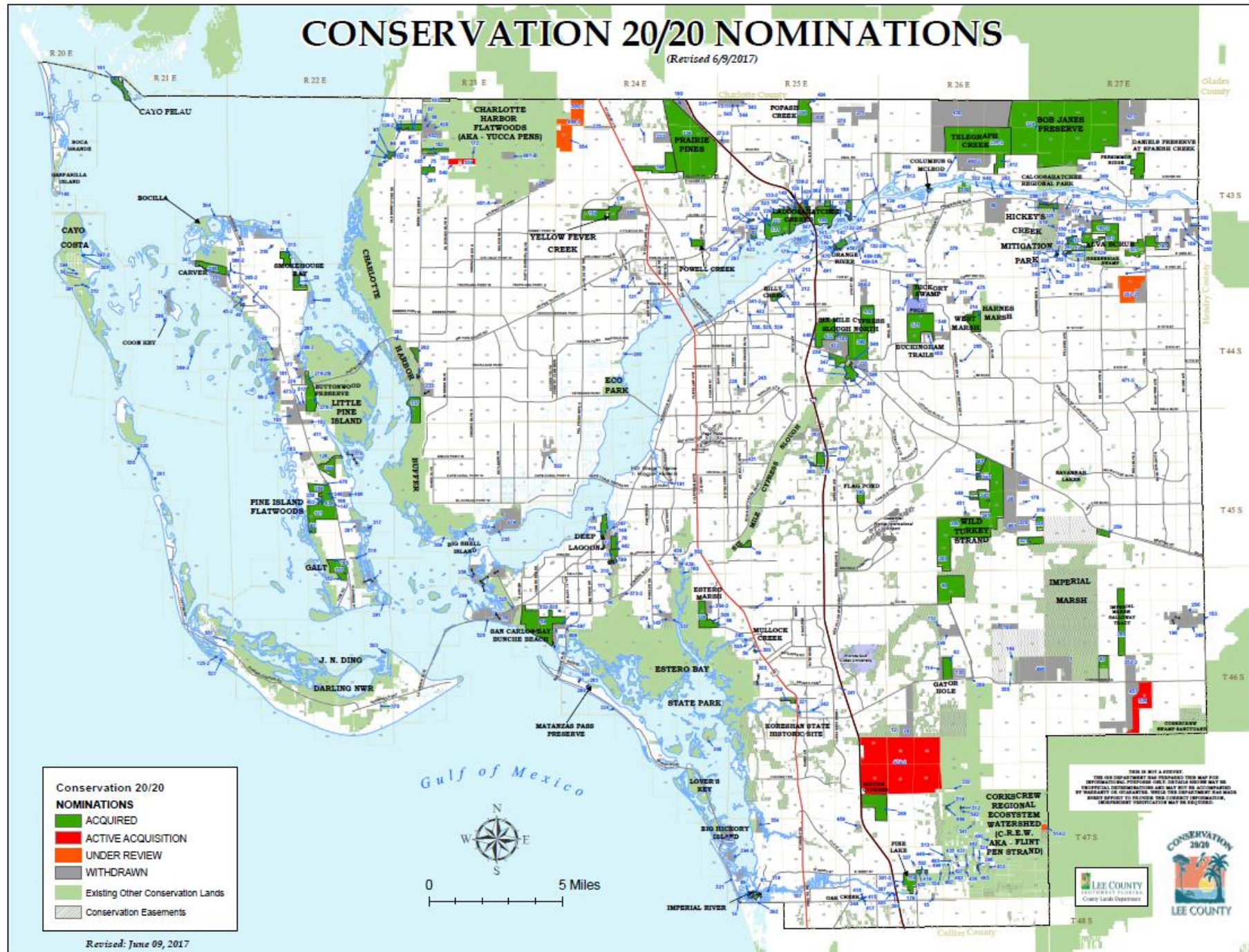
Step 5: Link proposed construction projects to conservation restoration and acquisition needs within the watersheds that the wetland impacts are occurring.



CONSERVATION 20/20 NOMINATIONS

(Revised 6/9/2017)

55 of 94



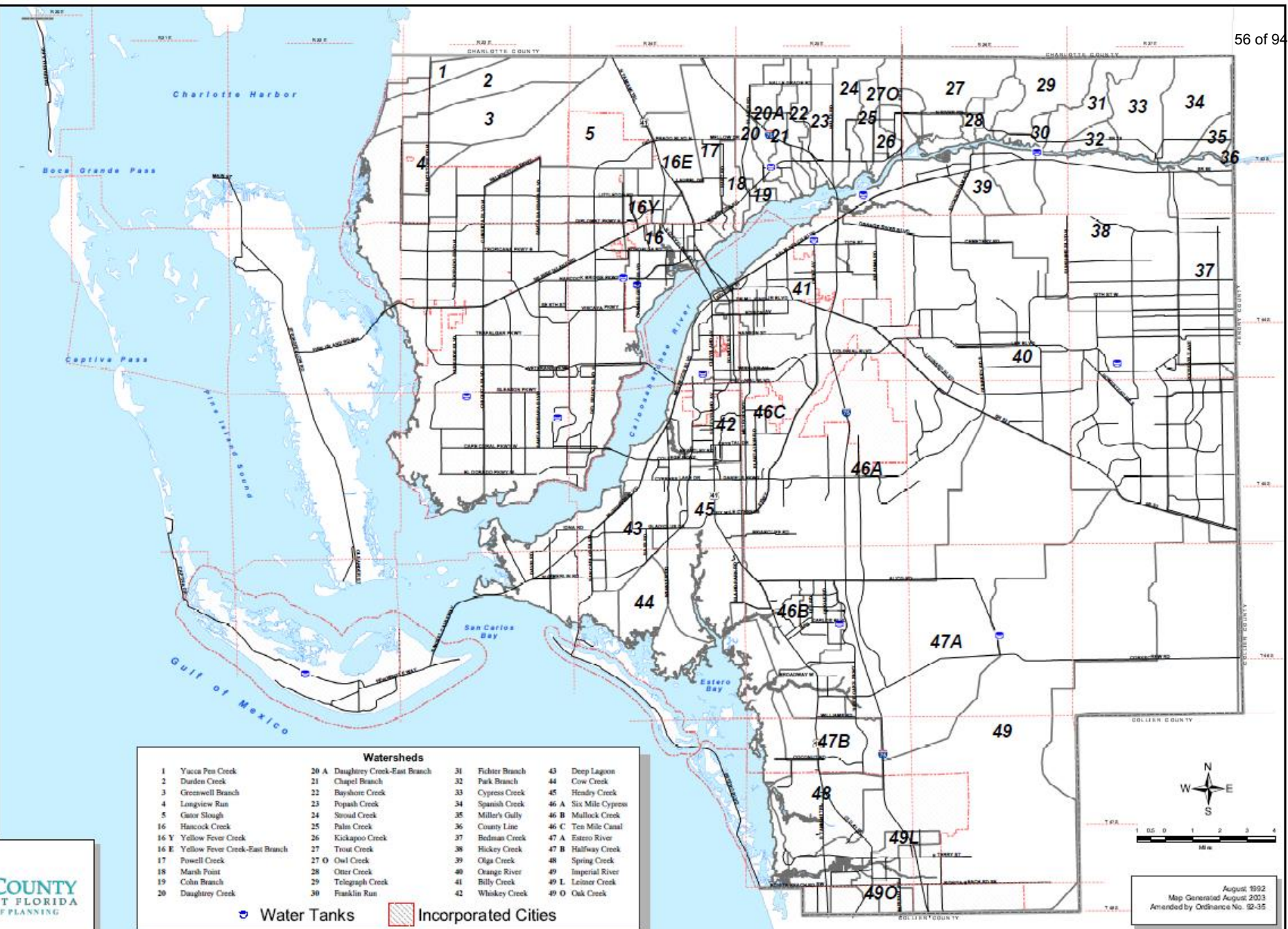
LEE COUNTY WATERSHED MAP

(Lee Plan Map 18)



Watersheds									
1	Yucca Pen Creek	20 A	Daughtrey Creek-East Branch	31	Fichter Branch	43	Deep Lagoon		
2	Darden Creek	21	Chapel Branch	32	Park Branch	44	Cow Creek		
3	Greenwell Branch	22	Bayshore Creek	33	Cypress Creek	45	Hendry Creek		
4	Longview Run	23	Popash Creek	34	Spanish Creek	46 A	Six Mile Cypress		
5	Gator Slough	24	Stroud Creek	35	Miller's Gully	46 B	Mullock Creek		
16	Hancock Creek	25	Palm Creek	36	County Line	46 C	Ten Mile Canal		
16 Y	Yellow Fever Creek	26	Kickapoo Creek	37	Bedman Creek	47 A	Estero River		
16 E	Yellow Fever Creek-East Branch	27	Trout Creek	38	Hickey Creek	47 B	Halfway Creek		
18	Powell Creek	27 O	Owl Creek	39	Oiga Creek	48	Spring Creek		
19	Marsh Point	28	Oter Creek	40	Orange River	49 L	Imperial River		
20	Daughtrey Creek	29	Telegraph Creek	41	Billy Creek	49 O	Leiner Creek		
		30	Franklin Run	42	Whiskey Creek		Oak Creek		

Water Tanks Incorporated Cities



August 1992
Map Generated August 2003
Amended by Ordinance No. 92-35

ID	Location	Acres of Impact	Watershed (s)	Watershed Names
1	3 Oaks Pkwy Ext	4.14	46A	Six-Mile Cypress
2	Alico Green Meadows	22.29	46A	Six-Mile Cypress
3	Ben Hill to Alico	5.62	46A	Six-Mile Cypress
4	Burnt Store Rd	1.68	1,2,3,4	Yucca Pen Creek, Durden Creek, Greenwell Branch, and Longview Run
5	Corkscrew Rd	8.62	47A	Estero Road
6	Diplomat Pkwy	0.09	16E	Yellow Fever Creek
7	E Terry St/Bonita Grande	8.19	49	Imperial River
8	Hanson Ext	0.13	46C	Ten-Mile Canal
9	Logan Ext	0.01	49	Imperial River
10	Luckett Ext	4.98	41	Billy's Creek
11	NE 24th Ave Ext	1.14	16E	Yellow Fever Creek
12	Seaboard St	0.55	41	Billy's Creek
13	SR 82 West	1.19	38	Hickey Creek
14	State Road 82 East	6.34	38	Hickey Creek, Bedman Creek

Watershed Names	Potential C2020 Projects	Other Mitigation Options
Bedman Creek	Acquisition and restoration of hydrology and removal of exotics on nominated parcels 109, 169, 255, 381,382, and 549.	58 of 94 Installation of wildlife undercrossing at Bedman Creek at SR 82.
Billy's Creek	Acquisition and restoration of hydrology and removal of exotics on nominated parcels 341-2, 351, 353, 443, 538. Restoration work on existing owned parcel 388.	Increased filter marsh locations on Billy's Creek. Source removal of the causes of bacteriological contamination.
Estero River	Acquisition and restoration of hydrology and removal of exotics on nominated parcels 100, 112, 114, 135, 221, 242, 246, and 496. Restoration work on existing owned parcels 62, 90, 74, 200, 249, 474-2 and the recently acquired Edison Farms property.	Restoration and acquisition projects in the northern CREW
Hickey Creek	Acquisition and restoration of hydrology and removal of exotics on nominated parcels 23, 80, 130, 150, 177, 266,408, 273, 418, 484, 490, 518. Restoration work on existing owned parcel 57, 101, 127, 163-3, 195, 325, and 357.	Installation of wildlife undercrossing at Hickey's Creek and SR82. Expansion of the FWC Hickey's Creek Mitigation Park
Imperial River	Acquisition and restoration of hydrology and removal of exotics on nominated parcels 15, 179, 232, 296, 327, 427, 433, 436, 437, 446, 467, 482, 492, 502, 513, 215-2, 524, 541, and 542. Restoration work on existing owned parcels 119, 249, 419, 428, and 465.	Implementation of parts of the City of Bonita Springs Flood Reduction and Watershed Restoration Plan. Restoration and acquisition projects in the southern CREW
Six-Mile Cypress	Acquisition and restoration of hydrology and removal of exotics on nominated parcels 237, 244-2, 254-3, 267, 396, 432, 485, and 501. Restoration work on existing owned parcels 69, 216, 239, 298, 348, 352, 360, 390. 410, 422, and 439.	Restoration projects in Filter marches in major drainage ways.
Ten-Mile Canal	Acquisition and restoration of hydrology and removal of exotics on nominated parcels 364-2. 395, 398, and 505.	Restoration and acquisition projects in the Estero Bay State Park.
Yellow Fever Creek	Acquisition and restoration of hydrology and removal of exotics on nominated parcels 138, 180 and 198. Restoration work on existing owned parcels 134, 156, and 194.	Restoration work in the Charlotte Harbor Flatwoods- Yucca-Panes, Babcock - Webb WMA hydrologic Restoration.
Yucca Pen Creek, Durden Creek, Greenwell Branch, and Longview Run	Acquisition and restoration of hydrology and removal of exotics on nominated parcels 87, 86, 94, 91, 97, 98, 405, and 539. Restoration work on existing owned parcels 58, 75,95, 102, 107 and 281	Restoration projects in the FWC Yucca Pens Project; restoration work and exotic removal on the Charlotte Harbor State Park.

ID	Location	Acres of Impact	Watershed (s)	Watershed Names	Potential C2020 Projects	Other Mitigation Options
1	3 Oaks Pkwy Ext	4.14	46A	Six-Mile Cypress	Acquisition and restoration of hydrology and removal of exotics on nominated parcels 237, 244-2, 254-3, 267, 396, 432, 485, and 501. Restoration work on existing owned parcels 69, 216, 239, 298, 348, 352, 360, 390. 410, 422, and 439.	59 of 94 Restoration projects in Filter marches in major drainage ways.
2	Alico Green Meadows	22.29	46A	Six-Mile Cypress	Acquisition and restoration of hydrology and removal of exotics on nominated parcels 237, 244-2, 254-3, 267, 396, 432, 485, and 501. Restoration work on existing owned parcels 69, 216, 239, 298, 348, 352, 360, 390. 410, 422, and 439.	Restoration projects in Filter marches in major drainage ways.
3	Ben Hill to Alico	5.62	46A	Six-Mile Cypress	Acquisition and restoration of hydrology and removal of exotics on nominated parcels 237, 244-2, 254-3, 267, 396, 432, 485, and 501. Restoration work on existing owned parcels 69, 216, 239, 298, 348, 352, 360, 390. 410, 422, and 439.	Restoration projects in Filter marches in major drainage ways.
4	Burnt Store Rd	1.68	1,2,3,4	Yucca Pen Creek, Durden Creek, Greenwell Branch, and Longview Run	Acquisition and restoration of hydrology and removal of exotics on nominated parcels 87, 86, 94, 91, 97, 98, 405, and 539. Restoration work on existing owned parcels 58, 75,95, 102, 107 and 281	Restoration projects in the FWC Yucca Pens Project; restoration work and exotic removal on the Charlotte Harbor State Park.
5	Corkscrew Rd	8.62	47A	Estero River	Acquisition and restoration of hydrology and removal of exotics on nominated parcels 100, 112, 114, 135, 221, 242, 246, and 496. Restoration work on existing owned parcels 62, 90, 74, 200, 249, 474-2 and the recently acquired Edison Farms property.	Restoration and acquisition projects in the northern CREW
6	Diplomat Pkwy	0.09	16E	Yellow Fever Creek	Acquisition and restoration of hydrology and removal of exotics on nominated parcels 138, 180 and 198. Restoration work on existing owned parcels 134, 156, and 194.	Restoration work in the Charlotte Harbor Flatwoods-Yucca-Panes, Babcock - Webb WMA hydrologic Restoration.
7	E Terry St/Bonita Grande	8.19	49	Imperial River	Acquisition and restoration of hydrology and removal of exotics on nominated parcels 15, 179, 232, 296, 327, 427, 433, 436, 437, 446, 467, 482, 492, 502, 513, 215-2, 524, 541, and 542. Restoration work on existing owned parcels 119, 249, 419, 428, and 465.	Implementation of parts of the City of Bonita Springs Flood Reduction and Watershed Restoration Plan. Restoration and acquisition projects in the southern CREW
8	Hanson Ext	0.13	46C	Ten-Mile Canal	Acquisition and restoration of hydrology and removal of exotics on nominated parcels 364-2. 395, 398, and 505.	Restoration and acquisition projects in the Estero Bay State Park.
9	Logan Ext	0.01	49	Imperial River	Acquisition and restoration of hydrology and removal of exotics on nominated parcels 15, 179, 232, 296, 327, 427, 433, 436, 437, 446, 467, 482, 492, 502, 513, 215-2, 524, 541, and 542. Restoration work on existing owned parcels 119, 249, 419, 428, and 465.	Implementation of parts of the City of Bonita Springs Flood Reduction and Watershed Restoration Plan. Restoration and acquisition projects in the southern CREW
10	Luckett Ext	4.98	41	Billy's Creek	Acquisition and restoration of hydrology and removal of exotics on nominated parcels 341-2, 351, 353, 443, 538. Restoration work on existing owned parcel 388.	Increased filter marsh locations on Billy's Creek. Source removal of the causes of bacteriological contamination.
11	NE 24th Ave Ext	1.14	16E	Yellow Fever Creek	Acquisition and restoration of hydrology and removal of exotics on nominated parcels 138, 180 and 198. Restoration work on existing owned parcels 134, 156, and 194.	Restoration work in the Charlotte Harbor Flatwoods-Yucca-Panes, Babcock - Webb WMA hydrologic Restoration.
12	Seaboard St	0.55	41	Billy's Creek	Acquisition and restoration of hydrology and removal of exotics on nominated parcels 341-2, 351, 353, 443, 538. Restoration work on existing owned parcel 388.	Increased filter marsh locations on Billy's Creek. Source removal of the causes of bacteriological contamination.
13	SR 82 West	1.19	38	Hickey Creek	Acquisition and restoration of hydrology and removal of exotics on nominated parcels 23, 80, 130, 150, 177, 266,408, 273, 418, 484, 490, 518. Restoration work on existing owned parcel 57, 101, 127, 163-3, 195, 325, and 357.	Installation of wildlife undercrossing at Hickey's Creek and SR82. Expansion of the FWC Hickey's Creek Mitigation Park
14	State Road 82 East	6.34	38	Hickey Creek, Bedman Creek	Acquisition and restoration of hydrology and removal of exotics on nominated parcels 23, 80, 130, 150, 177, 266,408, 273, 418, 484, 490, 518. Restoration work on existing owned parcel 57, 101, 127, 163-3, 195, 325, and 357. Acquisition and restoration of hydrology and removal of exotics on nominated parcels 109, 169, 255, 381,382, and 549.	Installation of wildlife undercrossing at Hickey's Creek and SR82. Expansion of the FWC Hickey's Creek Mitigation Park. Installation of wildlife undercrossing at Bedman Creek at SR 82.

Step 6: Add the Master Mitigation Plan to the Annual Work Plan of County.



UNIFIED PLANNING WORK PROGRAM FOR FISCAL YEARS 2016/17 – 2017/18 (July 1, 2016 – June 30, 2018)

Adopted May 19, 2016
Amended June 16, 2017

LEE COUNTY METROPOLITAN PLANNING ORGANIZATION
815 Nicholas Parkway East, P.O. Box 150045, Cape Coral, Florida 33915-0045
(239) 244-2220 Fax: (239) 790-2695
www.leempo.com

Prepared by the staff and the participating agencies of the Lee County Metropolitan Planning Organization. This report was financed in part by the U.S. Department of Transportation, Federal Highway and Transit Administrations; the Florida Department of Transportation (FDOT); and participating local governments.

"The preparation of this report has been financed in part through grant[s] from the Federal Highway Administration and Federal Transit Administration (FTA), U.S. Department of Transportation, under the State Planning and Research Program, Section 550 (or Metropolitan Planning Program, Section 154.02) of Title 23, U.S. Code (USC). The contents of this report do not necessarily reflect the official views or policy of the U.S. Department of Transportation."

CFDA # 20.205, Highway Planning and Construction
Federal AIG Project Number 0281 (051)
FDOT financial project number 438312-1-14-01 PL Funds
FDOT financial project number 438312-1-14-02 SU Funds
FDOT Contract Number 02861

CFDA # 20.505, Federal Transit Technical Studies Grant (Metropolitan Planning)

Step 7: Establish a Standing Coordination Team for the Mitigation Plan Implementation and Updating (including site review)



Step 8: Review and Updating of the Mitigation Plan Annually



Acknowledgements

This project has benefited from the contributions of numerous agencies and individuals that have contributed information, time, and opinion to the contents and recommendations.

FUNDING FOR THIS REPORT WAS PROVIDED BY U.S. ENVIRONMENTAL PROTECTION AGENCY ASSISTANCE GRANT NUMBER CD- 00D50616 WITH FINANCIAL ASSISTANCE FROM U.S. ENVIRONMENTAL PROTECTION AGENCY REGION 4. Special assistance was received from Ms. Geryl Ricks, USEPA, Region 4.

The Southwest Florida Regional Planning Council provided the venue and support for the entire project and regular input in the structure and function of the study.

Internal first draft technical review is provided by the Estero Bay Agency on Bay Management.

Information and technical assistance, and site access permission from the Lee County staff, SWFRPC, FDEP, SFWMD, CHNEP, and the FWC.



Presenter Contact: James (Jim) W. Beever III

**1400 Colonial Boulevard, Suite 1
Fort Myers FL 33907**

239/938-1813 ext 224

Fax 239/938-1817,

jbeever@swfrpc.org www.SWFRPC.org

How to Do a Master Mitigation Plan

Development of the new list of upcoming public infrastructure projects for the projected planning future with the compatible in-watershed mitigation project.

Step 1: Collect all the available data on the proposed road, rail, port, airport, public transit, and utilities projects proposed within the plan timeframe.

The listings of the proposed public works projects for a particular jurisdiction can be found in the Capital Improvement Program (CIP) in local government and Metropolitan Planning Organization (MPO) short- and long-range planning. In current plans the projects are available in Geographic Information System (GIS) files that allow specific placement relative resources they have the potential to impact. Create an inventory/timeline of county public projects needed to implement the County's Comprehensive Plan.

Step 2: Overlay projects with maps of wetlands, listed species, conservation lands, and conservation easements. (This could also include archeological and cultural features).

Existing GIS resources regarding wetlands, listed species, conservation lands, and conservation easements are available from Federal, State local government and non-governmental sources. The State resource maps are collected by the University of Florida at the FGDL Metadata Explorer.

<https://www.fgdl.org/metadataexplorer/explorer.jsp>

Step 3: Quantify the intersection of the projects with the wetland (listed species, conservation lands, conservation easements, archeological and cultural features) resources.

By overlaying the different data layers the intersection of the proposed public construction project impacts with the sensitive resources including wetlands can be defined and calculated. The derived results can be identified to extent, in area, type, and watershed.

Step 4: Gather information of the conservation needs of local government, state government, federal government and non-governmental conservation lands along with available mitigation banks.

Maps of existing Federal, State, local government, and non-governmental conservation lands are available from the source entities and the Florida Natural Resource Inventory. Conservation easement mapping has been completed by the FNAI and the SWFRPC (Beever and Walker 2015). If the regional has an active Regional Planning Council program or a National Estuary Program, compiled lists and mapping of cumulative conservations lands for their regions are available. Established conservation land's will generally have or will be developing management plans that identify the restoration needs for their specific properties. Often these plans will have a corresponding restoration need for impacts that will be accrued by proposed public construction projects. Inventory the restoration efforts affecting the County that are required by various public programs.

Step 5: Link proposed construction projects to conservation restoration and acquisition needs within the watersheds that the wetland impacts are occurring.

Assess the mitigation requirements of the proposed construction projects that will have an impact. The direct linkage of specific construction projects to specific restoration and or acquisition projects provides that the mitigation for a wetland impact can offset not just the wetland functional assessment, acreage and type, but also the hydrologic and water quality impacts within the same watersheds. Most commercial mitigation banks are not in the same watershed as the impacts they are purported to offset. Generally due to the functional assessment methods used in the state of Florida the mitigation provided at off-site locations is a fraction of the area that is actually impacted (Beever et al. 2011). Functionally where this planning method has been implemented the mitigation projects are completed before the construction impacts occur. This provides a surety that mitigation has been achieved.

Step 6: Add the Master Mitigation Plan to the Annual Work Plan of County.

The annual work plan cycle can draw from the Five-Year CIP forthcoming year's capital needs plan and identify and fund the paralleling mitigation. Additionally, the County's restoration and preservation targets can be assessed and included. These targets will then look towards the mitigation efforts for any synergy. (For example, a preservation site may be suitable for water quality restoration projects, rehydration, and habitat/biological uplift. Further, some greenways/trails activities may be appropriate.) In such cases, additional fiscal resources can be employed, providing savings opportunities that would not be achieved through projects located in disparate areas. Finally, the paralleling effort identifies expenditures the County will make by satisfying certain impacts through purchase of credits from mitigation banks.

Step 7: Establish a Standing Coordination Team for the Mitigation Plan Implementation and Updating

Establish a Standing Coordination Team for the Mitigation Plan Implementation and Updating composed of the agencies engaged in permitting and the CIP for monitoring of progress and for updating the Master Mitigation Plan. This team would include the active County departments,

Federal, State, Regional and in some cases non-governmental land conservation entities.

Step 8: Review and Updating of the Mitigation Plan Annually

The Mitigation Plan can be designed to be reviewed and updated on an annual basis. It can then continually evolve and be influenced by the development of new or improved management techniques; increased coordination with other regional programs and conservation organizations; and changes in Federal, State and local regulations.

As preparations for the new CIP begin each year, the County and its partners in both the public and private sectors should gather to assess the accomplishments that have resulted from implementation of the Mitigation Plan. The basis for this discussion will be a report that tracks the cumulative progress of acquisition and restoration activities undertaken to offset for the impacts of growth each year. The County and its partners will also assess the status of other efforts aimed at the restoration and protection of natural resources in the region (the Comprehensive Everglades Restoration Plan, Total Maximum Daily Loads Program, etc.) to determine how they affect and can be incorporated into the Mitigation Plan. Finally, the County can use existing monitoring programs, along with any necessary amendments, to establish progress in achieving overall restoration goals.

Restoration and protection priorities can be evaluated and affirmed or revised. Each map that is a part of the Mitigation Plan should then be updated to reflect changes that occur over time, and the map series should be expanded to include pertinent data from all agencies and be placed in an accessible location on-line to maximize its usefulness to scientists, planners, reviewers and resource managers.

From the review process, the Mitigation Plan databases can be updated, cooperative agreements can be affirmed and/or renegotiated, and the planning and implementation processes can continue to advance. The County may either facilitate the annual review and update of the Mitigation Plan or contract with a consulting firm or agency such as the Regional Planning Council for this work. Updates to maps may be performed in a similar manner.

--- Agenda --- Item

9c

Disaster Recovery
Coordinator Update

9c

9c

Agenda
Item

10

Director’s Report

10

10



EXECUTIVE DIRECTOR'S REPORT: January 17, 2019

Mission Statement:

To work together across neighboring communities to consistently protect and improve the unique and relatively unspoiled character of the physical, economic and social worlds we share...for the benefit of our future generations.

1. Management / Operations

a. Budget

- November financials

2. Resource Development and Capacity Building

- Nominations for Executive Board
- FRCA Policy Board Update
- Post-Disaster Coordinator Update- Sean McCabe
- Promise Zone Update – Margaret Wuerstle
 - ✓ Meeting on March 18, 2019 at 2:00 PM
- VISTA Application
- FRCA Monthly Report (Information Only)
- RFPs for EDA Agriculture Branding and Marketing

3. 2nd Quarter FY 2018 – 2019 (January 1 – March 31)

- Grants Awarded:
 - ✓ DEO grant for \$30,000: Development of Food Safety Plans
 - ✓ EDA grant for \$206,545: Regional Ag Sustainability Implementation
 - ✓ EDA- Disaster Coordinator; \$250,000
 - ✓ Brownfields grant \$600,000
 - ✓ FHERO- RDG Grant: \$82,300
- Grants Under Development
- Grants Pending: \$90,000 approximately
 - ✓ FDEP – Ecosystem Services – Aquatic Preserves Valuation: \$90,000

Agenda

Item

10a

Financials

10a

10a

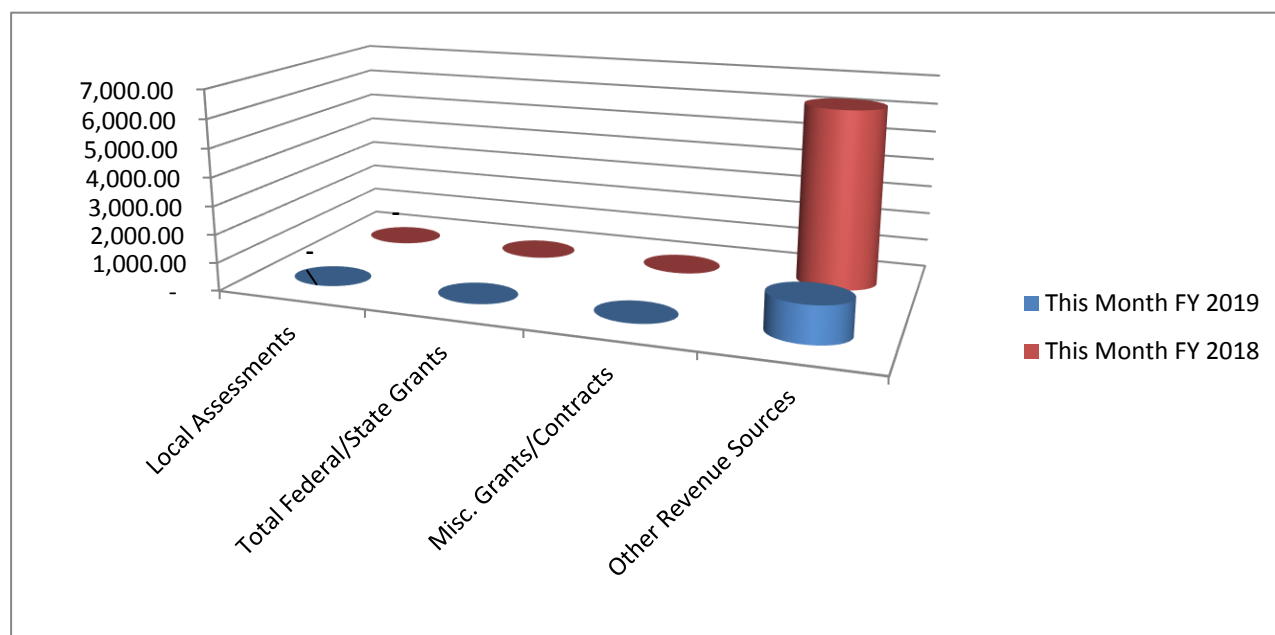
2018 - 2019 Workplan & Budget Financial Snapshot

Nov-18

Revenues

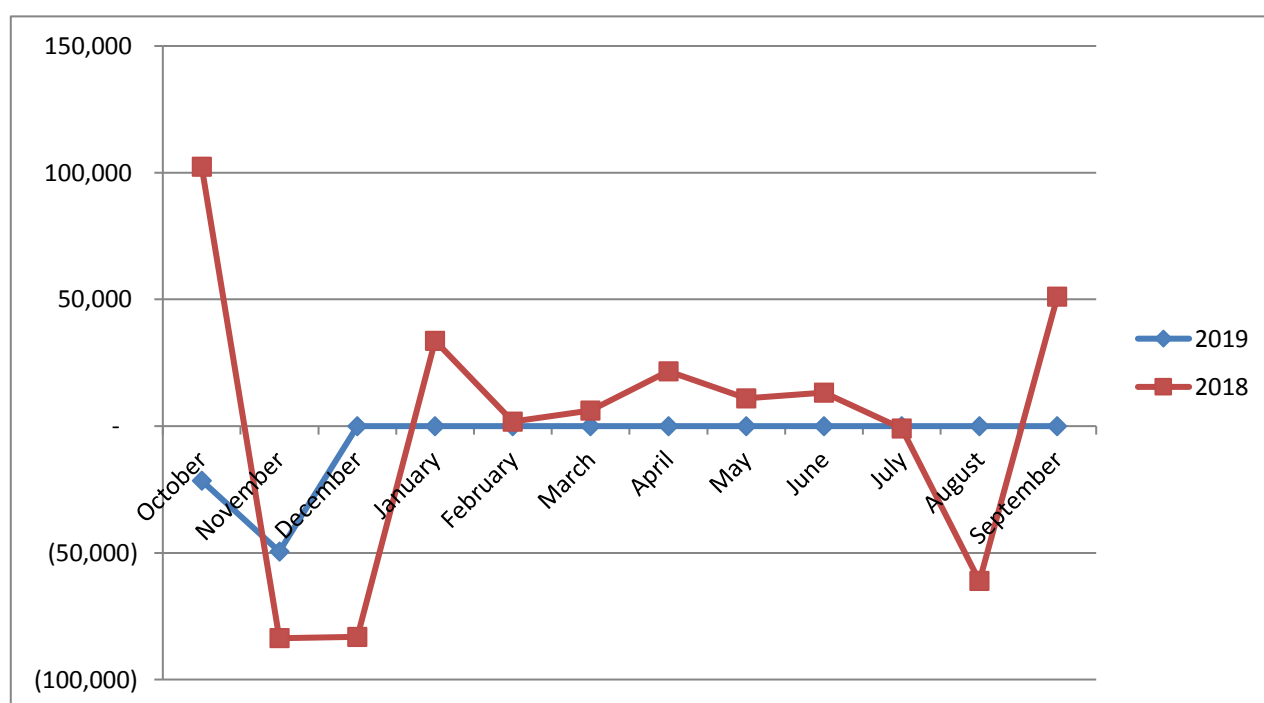
Local Assessments
Total Federal/State Grants
Misc. Grants/Contracts
Other Revenue Sources

Monthly Revenues



Notes: Local Assessments billed at the beginning of each quarter: October, January, April and July
State/Federal Grants billed quarterly: LEPC, HMEP, and EPA
Federal Grants billed Semi Annually: Economic Development
Misc. Grants/Contracts billed by deliverable: SQG, Interagency PO'S
Other(DRI) billed /recorded monthly as cost reimbursement

Monthly Net Income (Loss)



YTD: Net Income (\$71,040) Unaudited

SWFRPC

Detail of Reserve

As of NOVEMBER 30, 2018

Cash and Cash Equivalents:

Petty Cash	\$ 200
FineMark Operating Funds	79,274
	<hr/>
<i>Total Cash and Cash Equivalents</i>	\$ 79,474

Investments:

FineMark Money Market	\$ 513,780
Local government Surplus Trust Fund Investment Pool (Fund A)	140,989
	<hr/>
<i>Total Investments</i>	\$ 654,769

Total Reserves	<hr/>
	\$ 734,243
	<hr/> <hr/>

**SWFRPC INCOME STATEMENT
COMPARED WITH BUDGET**

74 of 94

FOR THE ONE MONTH ENDING NOVEMBER 30, 2018

	Current Month	Year to Date A	FY 2018-2019 Approved Budget B	% Of Budget Year to Date	Budget Remaining
REVENUES					
LOCAL ASSESSMENTS					
COLLIER COUNTY	-	26,810	107,241	25%	\$ 80,431
GLADES COUNTY	-	982	3,926	25%	\$ 2,944
HENDRY COUNTY	-	2,929	11,717	25%	\$ 8,788
CITY OF FORT MYERS	-	5,933	23,732	25%	\$ 17,799
TOWN OF FORT MYERS BEACH INC	-	475	1,898	25%	\$ 1,423
BONITA SPRINGS	-	3,760	15,041	25%	\$ 11,281
CITY OF SANIBEL	-	499	1,998	25%	\$ 1,499
TOTAL LOCAL ASSESSMENTS	\$ -	\$ 41,388	\$ 165,553	25%	\$ 124,165
FEDERAL / STATE GRANTS					
DEM - LEPC 18/19	-	-	80,000	N/A	80,000
DEM - HMEP 17/18	-	-	-	N/A	-
DEM - HMEP 18/19	-	-	65,161	0%	65,161
DEM - Collier Hazard Analysis 17/18	-	-	20,844	0%	20,844
Promise Zone	-	-	-	N/A	-
Disaster Recovery Coordinator	-	-	100,000	0%	100,000
Economic Development Planning 17/19	-	-	70,000	0%	70,000
Brownfields - EPA	-	-	57,000	0%	57,000
TOTAL FEDERAL / STATE GRANTS	\$ -	\$ -	\$ 393,005	0%	\$ 190,844
MISC. GRANTS / CONTRACTS/CONTRACTUAL					
GLADES SQG	-	-	4,500	0%	4,500
TOTAL MISC. GRANTS/CONTRACTS	\$ -	\$ -	\$ 4,500	0%	\$ 4,500
DRIS/NOPCS/MONITORING					
DRI MONITORING FEES	\$ -	\$ -	-	\$ -	-
DRIS/NOPCS INCOME	-	-	-	\$ -	-
TOTAL	\$ -	\$ -	\$ -	\$ -	-
Program Development (Unsecured Grants/Contract)					
*Program Development (Unsecured	-	-	369,633	0%	-
TOTAL PROGRAM DEVELOPMENT	\$ -	\$ -	\$ 369,633	N/A	\$ -
OTHER REVENUE SOURCES					
ABM SPONSORSHIPS	-	-	-	N/A	-
CELA TEGA SPONSORSHIPS	-	-	-	N/A	-
Misc. Income	866	866	6,000	14%	(5,134)
INTEREST INCOME - Money Market	148	300	-	N/A	300
Fund A Investment Income	282	564	-	N/A	564
TOTAL OTHER REVENUE SOURCES	\$ 1,295	\$ 1,731	\$ 6,000	29%	\$ (4,269)

	Current Month	Year to Date A	FY 2018-2019 Approved Budget B	% Of Budget Year to Date	Budget Remaining
<i>Fund Balance</i>	\$ -	\$ -	\$ 852,378		
TOTAL REVENUES	\$ 1,295	\$ 43,119	\$ 1,791,069		\$ 315,240
EXPENSES					
PERSONNEL EXPENSES					
SALARIES EXPENSE	\$ 30,616	\$ 60,451	\$ 511,780	12%	451,329
FICA EXPENSE	2,266	4,526	39,151	12%	34,625
RETIREMENT EXPENSE	5,827	2,513	58,184	4%	55,671
HEALTH INSURANCE EXPENSE	3,760	8,399	83,330	10%	74,931
WORKERS COMP. EXPENSE	125	250	2,904	9%	2,654
UNEMPLOYMENT COMP. EXPENSE			-	N/A	-
TOTAL PERSONNEL EXPENSES	\$ 42,593	\$ 76,140	\$ 695,349	11%	619,209
OPERATIONAL EXPENSES					
CONSULTANTS	\$ 1,288	\$ 11,250	\$ 42,650	26%	31,400
GRANT/CONSULTING EXPENSE	-	175	-	N/A	(175)
AUDIT SERVICES EXPENSE	-	-	32,000	0%	32,000
TRAVEL EXPENSE	967	1,961	24,000	8%	22,039
TELEPHONE EXPENSE	147	472	4,600	10%	4,128
POSTAGE / SHIPPING EXPENSE	44	89	1,200	7%	1,111
EQUIPMENT RENTAL EXPENSE	246	877	6,695	13%	5,818
INSURANCE EXPENSE	410	1,089	11,612	9%	10,523
REPAIR/MAINT. EXPENSE	-	-	1,000	0%	1,000
PRINTING/REPRODUCTION EXPENSE	98	192	3,100	6%	2,908
UTILITIES (Elec, Internet)	637	1,396	21,100	7%	19,704
ADVERTISING/LEGAL NOTICES EXP	-	17	1,600	1%	1,583
OTHER MISC. EXPENSE	-	-	200	0%	200
BANK SERVICE CHARGES	-	-	-	N/A	N/A
OFFICE SUPPLIES EXPENSE	48	97	3,500	3%	3,403
COMPUTER RELATED EXPENSE	267	9,034	24,917	36%	15,883
DUES AND MEMBERSHIP	-	2,500	25,095	10%	22,595
PUBLICATION EXPENSE	-	-	-	N/A	0
PROF. DEVELOP.	-	-	1,000	0%	1,000
MEETINGS/EVENTS EXPENSE	175	1,152	7,000	16%	5,848
CAPITAL OUTLAY - OPERATIONS	-	-	-	N/A	0
LEASE LONG TERM	3,859	7,718	48,233	16%	40,516
UNCOLLECTABLE RECEIVABLES	-	-	-	N/A	N/A
FUND BALANCE			\$ 852,378		
OPERATIONAL EXP.	\$ 8,186	\$ 38,018	\$ 1,111,880	3%	221,484

Current Month	Year to Date A	FY 2018-2019 Approved Budget B	% Of Budget Year to Date	Budget Remaining
------------------	-------------------	--------------------------------------	-----------------------------	---------------------

ALLOCATION FOR FRINGE/INDIRECT (CAPTURED BY GRANTS)

TOTAL OPERATIONAL EXP.			\$	1,111,880		
TOTAL CASH OUTLAY	\$	50,779	\$	114,157	\$	1,807,229
					\$	840,694
NET INCOME (LOSS)	\$	(49,483)	\$	(71,040)		

SWFRPC
Balance Sheet
November 30, 2018

77 of 94

ASSETS

Current Assets		
Cash - Florida Prime	\$	140,988.91
Cash - FineMark Oper.		79,274.11
Cash - FineMark MM		513,780.43
Petty Cash		200.00
Accounts Receivable		69,683.59
		<hr/>
Total Current Assets		803,927.04
Property and Equipment		
Property, Furniture & Equip		237,172.31
Accumulated Depreciation		(197,201.57)
		<hr/>
Total Property and Equipment		39,970.74
Other Assets		
Amount t.b.p. for L.T.L.-Leave		40,634.44
FSA Deposit		2,881.29
Rental Deposits		3,500.00
Amt t.b.p. for L.T.Debt-OPEB		65,074.00
		<hr/>
Total Other Assets		112,089.73
		<hr/>
Total Assets	\$	955,987.51
		<hr/> <hr/>

LIABILITIES AND CAPITAL

Current Liabilities		
Deferred NorthPoint NOPC_5328	\$	662.23
Deferred Commons NOPC_5337		1,500.00
Deferred Pine Air NOPC_5343		1,437.12
Deferred Palmer Ranch 28_5349		13,117.64
FICA Taxes Payable		209.65
Federal W/H Tax Payable		24.96
United way Payable		638.00
FSA Payable		(658.43)
LEPC Contingency Fund		305.25
		<hr/>
Total Current Liabilities		17,236.42
Long-Term Liabilities		
Accrued Annual Leave		40,634.44
Long Term Debt - OPEB		65,074.00
		<hr/>
Total Long-Term Liabilities		105,708.44
		<hr/>
Total Liabilities		122,944.86
Capital		
Fund Balance-Unassigned		350,110.64
Fund Balance-Assigned		514,000.00
FB-Non-Spendable/Fixed Assets		39,970.74
Net Income		(71,038.73)
		<hr/>
Total Capital		833,042.65
		<hr/>
Total Liabilities & Capital	\$	955,987.51
		<hr/> <hr/>

Unaudited - For Management Purposes Only

_____ Agenda
_____ Item

10b

Nominating Committee

10b

10b

Agenda Item

10c

Promise Zone Update

10c

10c

Agenda

Item

10d

FRCA Update

10d

10d



MONTHLY ACTIVITY REPORT: December 2018

RESOURCE DEVELOPMENT/CAPACITY BUILDING and OUTREACH

- Organized and distributed the November 2018 Florida Regional Councils Association (FRCA) Newsletter, *FRCA Forward*. Began collecting articles and formatting the December 2018 Newsletter. Continued to update the FRCA Facebook page.
- Worked with the Florida Association of Counties to update the email lists for newly elected local officials and maintain the email listserv for approximately 2,500 individuals who receive *FRCA Forward*.
- Continued to work with the Florida Association of Counties to maintain and enhance the FRCA website: www.flregionalcouncils.org.
- Hosted and participated with two conference calls regarding potential statewide projects for 2019.
- To enhance partnerships and strengthen the relationship between regional planning councils and their state and federal partners, participated in or attended the following meetings and shared information:
 - Health Equity Economic Stability Workgroup, Florida Department of Economic Opportunity
 - Florida 2030 Regional Roll Out, Florida Chamber Foundation
 - Resiliency Florida Board Meeting

ASSOCIATION MANAGEMENT

- Participated with the December FRCA Executive Directors Advisory Committee and Partners meetings held in Tallahassee.
- Continued preparations for the January 2019 Policy Board meetings.
- Assisted with the completion of the 2017-18 FRCA Annual Report
- Continued to coordinate logistics for the 2019 meeting and conference schedule.
- Distributed grant opportunities and information of interest from local, state and national organizations.

--- Agenda --- Item

10e

EDA Agricultural
Sustainability Grant

10e

10e

Agenda

Item

11

Staff Summaries

11

11

Agenda

Item

11a

Grant Activity Sheet

11a

11a

Type	Awarded	Job ID	Funding Agency	Project Manager	Project Name	App Due Date	Date Submitted	Date Awarded/Denied	Date Contract Signed	Project Total	RPC Amt	Start Date	End Date	Status	Total Match Amt-RPC
Contract	Pending		FDEP - FL Dept. of Environmental Protection	Jim Beever	Ecosystem Services- Aquatic Preserves Valuation		5/1/2018			\$90,000.00	\$90,000.00			Submitted	
Grant	Yes	3305	DEO - FL Dept. of Economic Opportunity	Margaret Wuerstle	Food Safety Plans for SWFL Small-Mid-sized Growers	43227	5/4/2018	9/7/2018		\$30,000.00	\$30,000.00			In Progress	
Grant	Yes	3424	EDA - US Economic Development Administration	Margaret Wuerstle	Regional Sustainability Implementation Study for SWFL Small to Mid-Sized Farms		5/8/2018	8/9/2018	8/13/2018	\$258,182.00	\$113,182.00			In Progress	\$51,637.00
Grant	Yes	3680	EPA - US Environmental Protection Agency	C.J. Kammerer	Brownfields Assessment	11/16/2017	11/16/2017	4/25/2018		\$600,000.00	\$40,000.00	10/1/2018	9/30/2021	In Progress	
Grant	Yes	3205	DEM - FL Div. of Emergency Management	C.J. Kammerer	FY18-19 HMEP Agreement					\$62,164.00	\$62,164.00	10/1/2018	9/30/2019	In Progress	
Grant	Yes	4007	DEO - FL Dept. of Economic Opportunity	C.J. Kammerer	FHERO 2018 RDG Grant		9/11/2018	9/17/2018		\$82,300.00	\$6,000.00	9/17/2018	9/17/2019	In Progress	
Grant	Yes	3723	DEM - FL Div. of Emergency Management	Margaret Wuerstle	FY18-19 Collier_Lee Hazard Analysis			7/31/2018	8/27/2018	\$19,615.00	\$19,615.00	9/1/2018	5/15/2019	In Progress	
Grant	Yes	3180	DEM - FL Div. of Emergency Management	C.J. Kammerer	FY18-19 LEPC Agreement			8/14/2018		\$80,000.00	\$80,000.00	7/1/2018	6/30/2019	In Progress	
Grant	Yes	3422	EDA - US Economic Development Administration	Sean McCabe	SWFL Disaster Recovery Coordinator		10/31/2017			\$250,000.00	\$200,000.00	1/1/2018	12/31/2019	In Progress	\$50,000.00
Contract	Yes	4101	Glades County	Tim Walker	Glades County SQG 2017-2022				6/6/2017	\$22,500.00	\$22,500.00	6/6/2017	6/6/2022	In Progress	
Grant	Yes	3420	EDA - US Economic Development Administration	C.J. Kammerer	FY17-19 EDA Planning Grant			1/1/2017		\$300,000.00	\$210,000.00	1/1/2017	12/31/2019	In Progress	\$90,000.00
Grant	Yes	3900	USDA - US Dept. of Agriculture	Margaret Wuerstle	Rural Promise Zone Designation			5/1/2016		\$0.00	\$0.00			In Progress	
Grant	Yes	3676	EPA - US Environmental Protection Agency	Jim Beever	Master Wetland Mitigation Strategy			11/3/2016	11/3/2016	\$220,000.00	\$220,000.00	10/1/2016	12/31/2018	Completed	\$10,000.00
Grant	Yes	3204	DEM - FL Div. of Emergency Management	C.J. Kammerer	FY17-18 HMEP Agreement			10/1/2017		\$65,161.00	\$65,161.00	10/1/2017	9/30/2018	Completed	
Contract	Yes	4212	City of Bonita Springs	Jim Beever	City of Bonita Springs Flood Reduction Project			10/4/2017		\$50,000.00	\$50,000.00	10/4/2017	12/31/2017	Completed	
Grant	Yes		DEO - FL Dept. of Economic Opportunity	Margaret Wuerstle	Regional Strategy for Agriculture Sustainability	6/30/2017		8/17/2017		\$30,000.00	\$30,000.00			Completed	
Grant	Yes	3178	DEM - FL Div. of Emergency Management	Sean McCabe	FY17-18 LEPC Agreement	7/1/2017	7/18/2017			\$80,000.00	\$80,000.00	7/1/2017	6/30/2018	Completed	
Grant	Yes	3722	DEM - FL Div. of Emergency Management	Tim Walker	FY17-18 Collier_Lee Hazard Analysis			7/19/2017	9/13/2017	\$20,844.00	\$20,844.00	7/1/2017	6/30/2018	Completed	
Grant	Yes	4005	DEO - FL Dept. of Economic Opportunity	C.J. Kammerer	2017 FHERO RDG Grant		2/16/2017			\$79,744.00	\$6,000.00		4/30/2018	Completed	
Contract	Yes	3730	SFRPC	C.J. Kammerer	Train the Trainers					\$10,000.00	\$10,000.00	1/1/2016	3/31/2017	Completed	
Contract	Yes	4211	Sarasota County	Jim Beever	Sarasota Climate Change Adaptation Plan					\$20,000.00	\$20,000.00	10/1/2016	5/30/2017	Completed	
	Yes	4210	City of Cape Coral	Jim Beever	Cape Coral Climate Change Resiliency Strategy					\$15,000.00	\$15,000.00		6/30/2017	Completed	
	Yes	3304	DEO - FL Dept. of Economic Opportunity	Margaret Wuerstle	DEO - Labelle Tourism Marketing					\$20,000.00	\$20,000.00	1/1/2017	5/30/2017	Completed	
Grant	Yes	3203	DEM - FL Div. of Emergency Management	Nichole Gwinnett	FY16-17 HMEP Grant	10/1/2016	10/1/2016	10/1/2016	10/1/2016	\$60,349.00	\$60,349.00	10/1/2016	12/31/2017	Completed	
Contract	Yes	4004	Hendry County	Margaret Wuerstle	Clewiston RGBD Grant TA					\$3,000.00	\$3,000.00			Completed	
Contract	Yes	4006	USDA - US Dept. of Agriculture	Margaret Wuerstle	City of Clewiston - Utilities Relocation -- Grant Writing	9/8/2017	9/13/2017	8/10/2017	8/10/2017	\$3,000.00	\$3,000.00	8/10/2017	9/13/2017	Completed	

Type	Awarded	Job ID	Funding Agency	Project Manager	Project Name	App Due Date	Date Submitted	Date Awarded/De nied	Date Contract Signed	Project Total	RPC Amt	Start Date	End Date	Status	Total Match Amt-RPC
Contract	Yes	3525-12	Glades County	Tim Walker	Glades County Small Quantity Generators (SQG)				5/17/2012	\$3,900.00	\$3,900.00	5/17/2012	5/16/2017	Completed	\$0.00
Grant	Yes	3414	EDA - US Economic Development	Margaret Wuerstle	EDA Planning Grant	1/22/2013	12/18/2013	4/18/2014	4/21/14	\$270,000.00	\$189,000.00	1/1/2014	12/31/2016	Completed	\$81,000.00
Grant	Yes	3177	DEM - FL Div. of Emergency Management	Nichole Gwinnett	FY16-17 LEPC Agreement	6/30/2016	4/6/2016	7/1/2016		\$59,000.00	\$59,000.00	7/1/2016	6/30/2017	Completed	\$0.00
Grant	Yes	3399	CTD - FL Commission for the Transportation	Nichole Gwinnett	FY16-17 TD Planning Agreement		5/19/2016	7/1/2016		\$38,575.00	\$38,575.00	7/1/2016	6/30/2017	Completed	\$0.00
Contract	Yes	3721	DEM - FL Div. of Emergency Management	Tim Walker	Collier County Hazard Analysis - FY16-17					\$8,054.00	\$8,054.00	7/1/2016	6/30/2017	Completed	\$0.00
Grant	Yes	3302	DEO - FL Dept. of Economic Opportunity	Margaret Wuerstle	DEO - City of Fort Myers - MLK Corridor	5/31/2015	5/1/2015		11/17/2015	\$30,000.00	\$30,000.00	1/1/2016	7/30/2016	Completed	
Contract	Yes	3534	City of Bonita Springs	Jim Beever	City of Bonita Springs - Spring Creek Restoration Plan	7/1/2014	7/1/2014	8/11/2014	8/11/2014	\$50,000.00	\$50,000.00	8/11/2014		Completed	
Contract	Yes	3201	DEM - FL Div. of Emergency Management	Nichole Gwinnett	FY15-16 HMEP Planning	9/28/2015	9/28/2015	9/28/2015	9/28/2015	\$15,500.00	\$15,500.00	10/1/2015	9/30/2016	Completed	
Grant	Yes	3419	Charlotte County	Margaret Wuerstle	DEO - Charlotte County			3/30/2016	3/30/2016	\$500.00	\$500.00			Completed	
Contract	Yes	3170	DOE - US Dept. of Energy	Rebekah Harp	Solar Ready II		3/22/2013	7/18/2013		\$140,000.00	\$90,000.00	7/1/2013	1/1/2016	Completed	\$50,000.00
Grant	Yes	3673	EPA - US Environmental Protection Agency	Jim Beever	A Unified Conservation Easement Mapping and Database for the State of	4/15/2013	4/8/2013	6/3/2013		\$294,496.00	\$148,996.00	10/1/2013	9/30/2015	Completed	\$145,500.00
Contract	Yes	3674	EPA/CHNEP - Charlotte Harbor National Estuary Program	Jim Beever	Mangrove Loss Project	4/4/2014	4/4/2014	12/19/2014		\$243,324.00	\$60,000.00	12/1/2014	9/30/2016	Completed	
Grant	Yes	3397	CTD - FL Commission for the Transportation	Nichole Gwinnett	Glades-Hendry TD Planning Agreement FY2014-15			5/16/2014		\$38,573.00	\$38,573.00	7/1/2014	6/30/2015	Completed	\$0.00
Grant	Yes	3725	Visit Florida	Tim Walker	OUR CREATIVE ECONOMY Marketing	2/9/2015	2/9/2015	6/25/2015	6/26/2015	\$5,000.00	\$2,500.00	7/1/2015	6/15/2016	Completed	\$2,500.00
Grant	Yes	3164	DEM - FL Div. of Emergency Management	Nichole Gwinnett	FY14-15 HMEP Planning				2/4/2015	\$22,000.00	\$22,000.00	10/1/2014	9/30/2015	Completed	\$0.00
Grant	Yes	3675	EPA - US Environmental Protection Agency	Jim Beever	Developing a Method to Use Ecosystem Services to	5/15/2015	5/5/2015	9/29/2015	9/29/2015	\$234,071.00	\$174,071.00	10/1/2015	9/30/2016	Completed	\$60,000.00
Grant	Yes	3171	DEM - FL Div. of Emergency Management	Nichole Gwinnett	FY15-16 LEPC Agreement	6/30/2015	5/15/2015	6/11/2015	6/11/2015	\$48,000.00	\$48,000.00	7/1/2015	6/30/2016	Completed	\$0.00
Grant	Yes	3398	CTD - FL Commission for the Transportation Disadvantaged	Nichole Gwinnett	FY15-16 Glades-Hendry TD Agreement	6/30/2015	6/1/2015	7/1/2015	7/1/2015	\$38,573.00	\$38,753.00	7/1/2015	6/30/2016	Completed	\$0.00
Grant	Yes	3202	DEM - FL Div. of Emergency Management	Nichole Gwinnett	FY14-15 HMEP Planning Grant Modification			9/11/2015		\$50,000.00	\$50,000.00	10/1/2015	12/15/2015	Completed	\$0.00
Contract	Yes	3173	DEM - FL Div. of Emergency Management	Nichole Gwinnett	FY15-16 HMEP Training Contract	10/1/2015	9/30/2015	9/28/2015	9/28/2015	\$58,422.00	\$58,422.00	10/1/2015	9/30/2016	Completed	\$0.00
Contract	Yes	3418	Collier County	Rebekah Harp	Marketing & Data Research					\$1,200.00	\$1,200.00	12/4/2015	1/29/2016	Completed	
Grant	Yes	3176	DOE - US Dept. of Energy	Rebekah Harp	NARC - SM3 - 2016 Data Surveys			2/11/2016		\$1,000.00	\$1,000.00	2/1/2016	3/31/2016	Completed	
PO	Yes	3005	Collier County	Margaret Wuerstle	Collier County EDC - USDA Grant Application			3/15/2016	3/22/2016	\$3,000.00	\$3,000.00	3/23/2016	3/31/2016	Completed	
Grant	Yes	3301	DEO - FL Dept. of Economic Opportunity	Margaret Wuerstle	Clewiston Mainstreet Revitalization			12/8/2015		\$30,000.00	\$30,000.00	12/14/2015	6/30/2016	Completed	

Type	Awarded	Job ID	Funding Agency	Project Manager	Project Name	App Due Date	Date Submitted	Date Awarded/Denied	Date Contract Signed	Project Total	RPC Amt	Start Date	End Date	Status	Total Match Amt-RPC
Grant	Yes	3303	DEO - FL Dept. of Economic Opportunity	Margaret Wuerstle	DEO - MPO Rail Study						\$39,000.00	10/7/2015	5/31/2016	Completed	
PO	Yes	4002	NEFRC - Northeast Florida Regional Council	Tim Walker	2016 SRESP Update					\$14,200.00	\$14,200.00	4/28/2016	7/19/2016	Completed	
PO	Yes	4003	Rural Neighborhoods	Tim Walker	Rural Neighborhoods Mapping					\$750.00	\$750.00	6/1/2016	6/30/2016	Completed	
Contract	Yes	3720	DEM - FL Div. of Emergency Management	Tim Walker	Collier Hazard Analysis FY15-16					\$9,693.00	\$9,693.00	7/1/2015	6/30/2016	Completed	
Contract	Yes	3520	TBRPC - Tampa Bay Regional Planning Council	Rebekah Harp	2016 Disaster Planning Guide					\$4,000.00	\$4,000.00	2/1/2016	4/30/2016	Completed	
PO	Yes	3006	SWFEC - Southwest Florida Enterprise Center	Margaret Wuerstle	SWFEC PRIME - Grant Application/Technical Assistance					\$5,000.00	\$5,000.00	5/1/2016	5/30/2016	Completed	
Contract	Yes	3004	NARC - National Association of Regional Councils	Rebekah Harp	MARC Travel SRII					\$379.58	\$379.58	10/1/2015	5/31/2016	Completed	
PO	Yes	4001	Collier County	Margaret Wuerstle	Collier County EDA TA					\$5,000.00	\$5,000.00	4/18/2016	5/30/2016	Completed	
Contract	Yes	6200	FDEP - FL Dept. of Environmental Protection	Margaret Wuerstle	2016 Brownfields Event					\$6,887.61	\$6,887.61	4/1/2016	10/30/2016	Completed	
Grant	No		EPA - US Environmental Protection Agency	Jim Beever	WPDG- CHNEP Wetland Connectivity		5/8/2018			\$204,120.00	\$145,246.00			Denied	
Grant	No		DEO - FL Dept. of Economic Opportunity	Tim Walker	Storm Surge Evac Routes & Shelters Interactive GIS Web Map	5/7/2018	5/4/2018	9/7/2018		\$35,000.00	\$35,000.00			Denied	
Grant	No		DEO - FL Dept. of Economic Opportunity	Margaret Wuerstle	Affordable Housing Directory of Resources	5/7/2018	5/1/2018	9/7/2018		\$40,000.00	\$40,000.00			Denied	
Grant	No		DEO - FL Dept. of Economic Opportunity	Margaret Wuerstle	SWFL Opioid Resource Guide	5/7/2018	5/1/2018	9/7/2018		\$40,000.00	\$40,000.00			Denied	
Grant	No		Bloomberg Philanthropies	Margaret Wuerstle	Bloomberg - City of Bonita Springs Mitigation	10/20/2017	10/19/2017			\$1,000,000.00	\$60,000.00			Denied	
Grant	No		SWFL Community Foundation	Margaret Wuerstle	Community Impact Grants - MLK Corridor	11/3/2017	11/2/2017			\$50,000.00				Denied	
Grant	No		DEO - FL Dept. of Economic Opportunity	Jennifer Pellechio	Economic Opportunity Map		4/27/2016	6/28/2016		\$40,000.00				Denied	
Grant			DEO - FL Dept. of Economic Opportunity	Margaret Wuerstle	Florida Ocean Alliance		5/2/2016	6/28/2016		\$28,000.00				Denied	
Grant	No		DEO - FL Dept. of Economic Opportunity	Margaret Wuerstle	Clewiston Downtown District Facade Program		5/2/2016	6/28/2016		\$30,000.00				Denied	
Grant	No		AETNA	Jason Stoltzfus	Cultivating Healthy Communities	4/15/2016	4/13/2016			\$100,000.00	\$100,000.00			Denied	
Grant	No		EPA - US Environmental Protection Agency	Jason Stoltzfus	2016 Brownfield Assessment		12/18/2015			\$280,000.00	\$46,900.00			Denied	
Grant	No		USDA - US Dept. of Agriculture	Margaret Wuerstle	Mobile Market: A Nutritional Oasis for Food Markets of SWFL	3/31/2014	3/31/2014	10/1/2014		\$599,549.00	\$298,605.00	10/1/2014	9/30/2017	Denied	
Grant	No		EDA - US Economic Development Administration	Rebekah Harp	Mote Marine Programming	8/31/2012	8/31/2012	8/31/2012		\$270,000.00	\$189,000.00	1/1/2014	12/31/2016	Denied	\$81,000.00
Grant	No		USDA - US Dept. of Agriculture	Nichole Gwinnett	Opportunity Buy Program Coordinator	4/23/2013	4/23/2013	11/20/2013		\$99,667.00	\$15,000.00	11/1/2013	10/31/2015	Denied	\$53,621.00

Agenda Item

12

SWFRPC Committee Reports

12

12

Agenda

Item

12a

12a

Executive Committee

12a

Agenda Item

12b

12b

Estero Bay Agency
on Bay Management

12b

Agenda Item

12c

12c

Quality of Life
and Safety Committee

12c

_____Agenda
_____Item

12d

12d

Regional Transportation
Committee

12d

_____Agenda
_____Item

12e

12e

Council Relevancy and
Restructuring Committee

12e

Agenda Item

12f

12f

Water Quality and Water
Resources Management
Committee

12f