

1400 Colonial Blvd., Suite 1  
Fort Myers, FL 33907



P: 239.938.1813 | F: 239.938.1817  
www.swfRPC.org

# COUNCIL MEETING AGENDA

February 18, 2016

9:00am – 11:30am

## **Mission Statement:**

*To work together across neighboring communities to consistently protect and improve the unique and relatively unspoiled character of the physical, economic and social worlds we share...for the benefit of our future generations.*

<b>1</b>	<b>INVOCATION</b>	
<b>2</b>	<b>PLEDGE OF ALLEGIANCE</b>	
<b>3</b>	<b>ROLL CALL</b>	
<b>4</b>	<b>PUBLIC COMMENTS</b>	
<b>5</b>	<b>AGENDA</b>	Page 1
<b>6</b>	<b>MINUTES OF THE JANUARY 21, 2016 MEETING (WILL BE PRESENTED IN THE MARCH PACKET)</b>	
<b>7</b>	<b>DIRECTOR'S REPORT</b>	Page 17
	a) Open House Question Results	Page 20
	b) Final MLK Meeting Schedule	Page 25
<b>8</b>	<b>STAFF SUMMARIES</b>	
	a) Grant Activity Sheet (Information Only)	Page 28
<b>9</b>	<b>CONSENT AGENDA</b>	Page 36
	a) Intergovernmental Coordination and Review	Page 38
	b) Charlotte County Comprehensive Plan Amendment DEO 15-7ESR	Page 43
	c) Glades County Comprehensive Plan Amendment DEO 15-1ESR	Page 51
	d) City of Bonita Springs Comprehensive Plan Amendment DEO 15-1ESR	Page 64
<b>10</b>	<b>REGIONAL IMPACT</b>	Page 75
	a) Bretonne Park NOPC	Page 83
<b>11</b>	<b>COMMITTEE REPORTS</b>	
	a) Budget & Finance Committee	
	- Financial Statements for January 2015	Page 90
	b) Economic Development Committee – <b>Councilman Forrest Banks</b>	
	c) Energy & Climate Committee – <b>Mr. Don McCormick</b>	
	d) Estero Bay Agency on Bay Management Committee – <b>Mr. James Beaver</b>	Page 100
	e) Executive Committee – <b>Chair Robert Mulhere</b>	
	f) Legislative Affairs Committee – <b>Mr. Don McCormick</b>	

Two or more members of the Peace River Basin Management Advisory Committee and Charlotte Harbor National Estuary Program may be in attendance and may discuss matters that could come before the Peace River Basin Management Advisory Committee and Charlotte Harbor National Estuary Program, respectively, for consideration.

In accordance with the Americans with Disabilities Act (ADA), any person requiring special accommodations to participate in this meeting should contact the Southwest Florida Regional Planning Council 48 hours prior to the meeting by calling (239) 338-2550; if you are hearing or speech impaired call (800) 955-8770 Voice/(800) 955-8771 TDD.

1400 Colonial Blvd., Suite 1  
Fort Myers, FL 33907



P: 239.938.1813 | F: 239.938.1817  
www.swfrpc.org

- g) Quality of Life & Safety Committee – **Mayor Willie Shaw**
- h) Regional Transportation Committee – **Ms. Margaret Wuerstle**
- i) Interlocal Agreement/Future of the SWFRPC Committee –  
**Councilman Jim Burch**

---

**12 NEW BUSINESS**

- a) SanCap Solar Presentation

---

**13 STATE AGENCIES COMMENTS/REPORTS**

---

**14 COUNCIL ATTORNEY'S COMMENTS**

---

**15 COUNCIL MEMBERS' COMMENTS**

---

**16 ADJOURN**

---

**NEXT SWFRPC MEETING DATE: MARCH 17, 2016**

Two or more members of the Peace River Basin Management Advisory Committee and Charlotte Harbor National Estuary Program may be in attendance and may discuss matters that could come before the Peace River Basin Management Advisory Committee and Charlotte Harbor National Estuary Program, respectively, for consideration.

In accordance with the Americans with Disabilities Act (ADA), any person requiring special accommodations to participate in this meeting should contact the Southwest Florida Regional Planning Council 48 hours prior to the meeting by calling (239) 338-2550; if you are hearing or speech impaired call (800) 955-8770 Voice/(800) 955-8771 TDD.

# SOUTHWEST FLORIDA REGIONAL PLANNING COUNCIL MEMBERSHIP

## ***OFFICERS***

***Mr. Don McCormick, Chair***

***Councilman Jim Burch, Vice-Chair***

***Mr. Thomas Perry, Secretary***

***Councilman Forrest Banks, Treasurer***

## ***CHARLOTTE COUNTY***

## ***COLLIER COUNTY***

Commissioner Tricia Duffy, Charlotte BCC

Commissioner Tim Nance, Collier BCC

Commissioner Ken Doherty, Charlotte BCC

Commissioner Penny Taylor, Collier BCC

Councilman Gary Wein, City of Punta Gorda

Councilwoman Teresa Heitmann, City of Naples

Mr. Donald McCormick, Governor Appointee

(City of Marco Island Vacancy)

Ms. Suzanne Graham, Governor Appointee

Mr. Robert "Bob" Mulhere, Governor Appointee

Mr. Alan D. Reynolds, Governor Appointee

## ***GLADES COUNTY***

## ***HENDRY COUNTY***

Commissioner Tim Stanley, Glades BCC

Commissioner Karson Turner, Hendry BCC

Commissioner Weston Pryor, Glades BCC

Commissioner Don Davis, Hendry BCC

Councilwoman Pat Lucas, City of Moore Haven

Commissioner Sherida Ridgill, City of Clewiston

Mr. Thomas Perry, Governor Appointee

Commissioner Julie Wilkins, City of LaBelle

Mr. Mel Karau, Governor Appointee

## ***LEE COUNTY***

## ***SARASOTA COUNTY***

Commissioner Frank Mann, Lee BCC

Commissioner Carolyn Mason, Sarasota BCC

Commissioner Cecil Pendergrass, Lee BCC

Commissioner Charles Hines, Sarasota BCC

Councilman Jim Burch, City of Cape Coral

Vice-Mayor Rhonda DiFranco, City of North Port

Councilman Forrest Banks, City of Fort Myers

Councilman Fred Fraize, City of Venice

Mayor Anita Cereceda, Town of Fort Myers Beach

Mayor Willie Shaw, City of Sarasota

Vice-Mayor Mick Denham, City of Sanibel

Mr. Felipe Colon, Governor Appointee

(City of Bonita Springs Vacancy)

(Governor Appointee Vacancy)

Ms. Laura Holquist, Governor Appointee

(Governor Appointee Vacancy)

## ***EX-OFFICIO MEMBERS***

Jon Iglehart, FDEP

Derek Burr, FDOT

Phil Flood, SFWMD

Melissa Dickens, SFWMD

## ***STAFF***

Margaret Wuerstle, Executive Director

Jennifer Pellechio, Deputy Director

Beth Nightingale, Legal Consultant

James Beever

Nichole Gwinnett

Rebekah Harp

Charles Kammerer

Timothy Walker

## **SOUTHWEST FLORIDA REGIONAL PLANNING COUNCIL (SWFRPC) ACRONYMS**

ABM - Agency for Bay Management - Estero Bay Agency on Bay Management

ADA - Application for Development Approval

ADA - Americans with Disabilities Act

AMDA -Application for Master Development Approval

BEER - Bureau of Economic Business and Research at the University of Florida

BLID - Binding Letter of DRI Status

BLIM - Binding Letter of Modification to a DRI with Vested Rights

BLIVR -Binding Letter of Vested Rights Status

BPCC -Bicycle/Pedestrian Coordinating Committee

CAC - Citizens Advisory Committee

CAO - City/County Administrator Officers

CDBG - Community Development Block Grant

CDC - Certified Development Corporation (a.k.a. RDC)

CEDS - Comprehensive Economic Development Strategy (a.k.a. OEDP)

CHNEP - Charlotte Harbor National Estuary Program

CTC - Community Transportation Coordinator

CTD - Commission for the Transportation Disadvantaged

CUTR - Center for Urban Transportation Research

DEO - Department of Economic Opportunity

DEP - Department of Environmental Protection



DO - Development Order

DOPA - Designated Official Planning Agency (i.e. MPO, RPC, County, etc.)

EDA - Economic Development Administration

EDC - Economic Development Coalition

EDD - Economic Development District

EPA – Environmental Protection Agency

FAC - Florida Association of Counties

FACTS - Florida Association of CTCs

FAR - Florida Administrative Register (formerly Florida Administrative Weekly)

FCTS - Florida Coordinated Transportation System

FDC&F -Florida Department of Children and Families (a.k.a. HRS)

FDEA - Florida Department of Elder Affairs

FDLES - Florida Department of Labor and Employment Security

FDOT - Florida Department of Transportation

FHREDI - Florida Heartland Rural Economic Development Initiative

FIAM – Fiscal Impact Analysis Model

FLC - Florida League of Cities

FQD - Florida Quality Development

FRCA -Florida Regional Planning Councils Association

FTA - Florida Transit Association

IC&R - Intergovernmental Coordination and Review

IFAS - Institute of Food and Agricultural Sciences at the University of Florida

JLCB - Joint Local Coordinating Boards of Glades & Hendry Counties

JPA - Joint Participation Agreement

JSA - Joint Service Area of Glades & Hendry Counties

LCB - Local Coordinating Board for the Transportation Disadvantaged

LEPC - Local Emergency Planning Committee

MOA - Memorandum of Agreement

MPO - Metropolitan Planning Organization

MPOAC - Metropolitan Planning Organization Advisory Council

MPOCAC - Metropolitan Planning Organization Citizens Advisory Committee

MPOTAC - Metropolitan Planning Organization Technical Advisory Committee

NADO – National Association of Development Organizations

NARC -National Association of Regional Councils

NOPC -Notice of Proposed Change

OEDP - Overall Economic Development Program

PDA - Preliminary Development Agreement

REMI – Regional Economic Modeling Incorporated

RFB - Request for Bids

RFI – Request for Invitation

RFP - Request for Proposals

RPC - Regional Planning Council

SHIP -State Housing Initiatives Partnership

SRPP – Strategic Regional Policy Plan

TAC - Technical Advisory Committee

TDC - Transportation Disadvantaged Commission (a.k.a. CTD)

TDPN - Transportation Disadvantaged Planners Network

TDSP - Transportation Disadvantaged Service Plan

USDA - US Department of Agriculture

WMD - Water Management District (SFWMD and SWFWMD)



Apalachee • Central Florida  
 East Central Florida • North Central Florida  
 Northeast Florida • South Florida • Southwest Florida  
 Tampa Bay • Treasure Coast • West Florida • Withlacoochee

104 West Jefferson Street, Tallahassee, FL 32301-1713 • 850.224.3427

## Regional Planning Council Functions and Programs

March 4, 2011

- **Economic Development Districts:** Regional planning councils are designated as Economic Development Districts by the U. S. Economic Development Administration. From January 2003 to August 2010, the U. S. Economic Development Administration invested \$66 million in 60 projects in the State of Florida to create/retain 13,700 jobs and leverage \$1 billion in private capital investment. Regional planning councils provide technical support to businesses and economic developers to promote regional job creation strategies.
- **Emergency Preparedness and Statewide Regional Evacuation:** Regional planning councils have special expertise in emergency planning and were the first in the nation to prepare a Statewide Regional Evacuation Study using a uniform report format and transportation evacuation modeling program. Regional planning councils have been preparing regional evacuation plans since 1981. Products in addition to evacuation studies include Post Disaster Redevelopment Plans, Hazard Mitigation Plans, Continuity of Operations Plans and Business Disaster Planning Kits.
- **Local Emergency Planning:** Local Emergency Planning Committees are staffed by regional planning councils and provide a direct relationship between the State and local businesses. Regional planning councils provide thousands of hours of training to local first responders annually. Local businesses have developed a trusted working relationship with regional planning council staff.
- **Homeland Security:** Regional planning council staff is a source of low cost, high quality planning and training experts that support counties and State agencies when developing a training course or exercise. Regional planning councils provide cost effective training to first responders, both public and private, in the areas of Hazardous Materials, Hazardous Waste, Incident Command, Disaster Response, Pre- and Post-Disaster Planning, Continuity of Operations and Governance. Several regional planning councils house Regional Domestic Security Task Force planners.
- **Multipurpose Regional Organizations:** Regional planning councils are Florida's only multipurpose regional entities that plan for and coordinate intergovernmental solutions on multi-jurisdictional issues, support regional economic development and provide assistance to local governments.
- **Problem Solving Forum:** Issues of major importance are often the subject of regional planning council-sponsored workshops. Regional planning councils have convened regional summits and workshops on issues such as workforce housing, response to hurricanes, visioning and job creation.
- **Implementation of Community Planning:** Regional planning councils develop and maintain Strategic Regional Policy Plans to guide growth and development focusing on economic development, emergency preparedness, transportation, affordable housing and resources of regional significance. In addition, regional planning councils provide coordination and review of various programs such as Local Government Comprehensive Plans, Developments of Regional Impact and Power Plant Ten-year Siting Plans. Regional planning council reviewers have the local knowledge to conduct reviews efficiently and provide State agencies reliable local insight.

- **Local Government Assistance:** Regional planning councils are also a significant source of cost effective, high quality planning experts for communities, providing technical assistance in areas such as: grant writing, mapping, community planning, plan review, procurement, dispute resolution, economic development, marketing, statistical analysis, and information technology. Several regional planning councils provide staff for transportation planning organizations, natural resource planning and emergency preparedness planning.
- **Return on Investment:** Every dollar invested by the State through annual appropriation in regional planning councils generates 11 dollars in local, federal and private direct investment to meet regional needs.
- **Quality Communities Generate Economic Development:** Businesses and individuals choose locations based on the quality of life they offer. Regional planning councils help regions compete nationally and globally for investment and skilled personnel.
- **Multidisciplinary Viewpoint:** Regional planning councils provide a comprehensive, multidisciplinary view of issues and a forum to address regional issues cooperatively. Potential impacts on the community from development activities are vetted to achieve win-win solutions as council members represent business, government and citizen interests.
- **Coordinators and Conveners:** Regional planning councils provide a forum for regional collaboration to solve problems and reduce costly inter-jurisdictional disputes.
- **Federal Consistency Review:** Regional planning councils provide required Federal Consistency Review, ensuring access to hundreds of millions of federal infrastructure and economic development investment dollars annually.
- **Economies of Scale:** Regional planning councils provide a cost-effective source of technical assistance to local governments, small businesses and non-profits.
- **Regional Approach:** Cost savings are realized in transportation, land use and infrastructure when addressed regionally. A regional approach promotes vibrant economies while reducing unproductive competition among local communities.
- **Sustainable Communities:** Federal funding is targeted to regions that can demonstrate they have a strong framework for regional cooperation.
- **Economic Data and Analysis:** Regional planning councils are equipped with state of the art econometric software and have the ability to provide objective economic analysis on policy and investment decisions.
- **Small Quantity Hazardous Waste Generators:** The Small Quantity Generator program ensures the proper handling and disposal of hazardous waste generated at the county level. Often smaller counties cannot afford to maintain a program without imposing large fees on local businesses. Many counties have lowered or eliminated fees, because regional planning council programs realize economies of scale, provide businesses a local contact regarding compliance questions and assistance and provide training and information regarding management of hazardous waste.
- **Regional Visioning and Strategic Planning:** Regional planning councils are conveners of regional visions that link economic development, infrastructure, environment, land use and transportation into long term investment plans. Strategic planning for communities and organizations defines actions critical to successful change and resource investments.
- **Geographic Information Systems and Data Clearinghouse:** Regional planning councils are leaders in geographic information systems mapping and data support systems. Many local governments rely on regional planning councils for these services.

# Agenda Item

1

Invocation

1

1

	Agenda
	Item

2

Pledge of Allegiance

2

2

# Agenda Item

3

Roll Call

3

3



# Agenda Item

4

Public Comments

4

4

\_\_\_\_\_Agenda  
\_\_\_\_\_Item

5

Agenda

5

5

# Agenda Item

6

Minutes

6

6

# --- Agenda --- Item

7

Director's Report

7

7



## EXECUTIVE DIRECTOR'S REPORT: February 18, 2016

### **Mission Statement:**

*To work together across neighboring communities to consistently protect and improve the unique and relatively unspoiled character of the physical, economic and social worlds we share...for the benefit of our future generations.*

### **1. Management / Operations**

- a. Budget
  - Budget Update
  - Audit will begin the end of February
  - New Revenues: \$292,271
- b. Open House Survey Results - attached

### **2. Resource Development and Capacity Building**

- a. Update on the Counter Terrorism Symposium
- b. FRCA: Policy Board meeting update
- c. Clewiston Revitalization Plan - Public Meetings February 26 & 27 at the Clewiston Inn
- d. City of Ft. Myers Martin Luther King Corridor Project - meeting flyer attached
- e. Update on Rail Study DEO grant

### **3. First Quarter FY 2015- 2016 (October - December)**

- a. Implementation of Workplan:
  - Grants Awarded:
    - ✓ DEO Clewiston Revitalization Plan: final contract signed and project has commenced
    - ✓ DEO Lee County Rail Study: Final contract signed and project has commenced
    - ✓ DEO Ft. Myers MLK Equitable Economy Plan: Final contract signed and project has commenced
    - ✓ EPA Wetland Protection Development Grant
  - Grants Under Development
    - ✓ FHREDI -Regional Rural Development Grant - On Hold

---

1926 Victoria Avenue | Fort Myers, FL 33901



239.338.2550 | F: 239.338.2560 | [www.swfrpc.org](http://www.swfrpc.org)

- ✓ The Promise Zone application is under development for Hendry County, Glades County and Immokalee.
- ✓ Art Place America National Creative Placemaking Fund for *Painting with Sunlight* project.
- Grants Pending:
  - ✓ Shirley Conroy Grant for Goodwheels \$245,799
  - ✓ Brownfields Grant \$280,000
- Pending Grants: approximately \$525,799

# Agenda Item

7a

Open House Question Results

7a

7a

Dots	
1st place dot=3pts, 2nd place dot=2pts, 3rd place dot=1pt	
Regional Economic Development	42
Regional Collaboration	41
Regional Transportation Planning	21
Development of Regional Legislative Priorities	13
Data and Research Services to Local Governments	13
Broadband Planning	12
Natural Resources Planning	10
Federal Economic Development District Coordinator	7
REMI Modeling	6
Public Education of Regional Issues	6
Disaster Preparedness	5
Data and Research Services to Private	5
GIS	5
Arts and Culture Planning	4
Quality of Life Planning	4
Loan Programs to Small Businesses	4
Tourism Planning	4
Energy Planning	3
Technical Assistance to Local Governments	3
Transportation Modeling	3
Crime and Safety Programs	3
Affordable Housing Planning	3
Everglades Restoration	3
Medical Tourism Planning	3
Economic Views Data Report	2
Marketing for Region	2
Sustainable Agriculture- Adjustment to Climate Change	2
Habitat Planning	1
Lobbying for Communities	1
Coordination of County MPOs	1
Blue Zone/Healthy Communities Planning	1
Community Based Climate Change Planning	1
Resiliency	0
Estero Bay Management	0
Grants Assistance	0
Medical Management Planning	0
Regional Promise Zone Coordination	0
Public Priority Polling	0
Transportation Disadvantaged	0
Transportation Study for Veterans	0
Brownfield Redevelopment	0
Hazardous Site Analysis	0
Sustainable Economic Development	0
Regional Event Coordination	0
Sports Tourism Planning	0



### 10 Year Question

Technology incubator with a strong connection to capital and world class broadband

Continual review of comp plans to keep an eye on growth as development grows, our cities draw people because of their small town with urban amenities, once lost never regain

Coordinated public transit system that preserves mobility for an aging population

More proactive and vocal role from FDOT including coordination with the MPOs

Transportation, train and bus, from rural areas to urban

Integration of tourist resources, regional tourism map/plan

Disney World

Comprehensive BRT system before we move forward with light rail

Industry that creates jobs with a minimum impact on the environment

Economies which provide jobs beyond the service industry

Biotech industry park

The opening of Cuba will be a regional deal

More manufacturing, too dependent on tourism, construction, and agriculture

Major league sports franchise

High tech cluster

Biotech cluster

Robust and coordinated medical tourism effort

Regional strategy to economic development

Larger businesses that provide more employment options

Cape Coral should have a mall

**8 of the answers relate to economic development (38%), specifically industry diversification and job creation**

**5 were related to tourism (24%)**

**4 answers were related to transportation (19%)**

## 5 Year Question

Investment in transportation infrastructure  
 more jobs  
 reduce drug sellers off street corners  
 tourism iner-regional collab  
 transportation  
 transportation  
 education  
 workforce  
 regional cooperation with EDCS  
 developing a strong regional brand and marketing program  
 economic diversification  
 vocational training  
 eliminate traffic congestion  
 real estate development  
 tourism  
 agriculture  
 transportation  
 high wage jobs  
 mass transit  
 SWFL Airport  
 elderly transportation option, BRT transportation  
 broadband  
 fiber  
 technology, maps  
 collaborative planning  
 seniors collaboration  
 green energy, PACE, solar  
 legislation with Tallahassee bringing in money  
 solar choice  
 Eco tourism  
 continual collaboration  
 economic development  
 strategic committee, community people, not just business leaders  
 economic development  
 transportation  
 regional marketing  
 broadband expansion  
 technology  
 transportation  
 environment (water, tourism, animals)  
 Maintain a healthy environmental infrastructure (water quality)  
 arts and culture  
 industry diversification  
 more high tech companies  
 Obama care bringing \$ to FL  
 expanded business in the area

more small businesses

transportation connecting Ft. Myers to Naples

recognizing quality development and management in the region

invest in tech infrastructure as a utility and support for entrepreneurs

create an environment that appeals to knowledge based creative professionals with a balance of economic, social, and environmental issues

broaden economic programs beyond construction, tourism, and agriculture

need housing for young professional so we can attract necessary workforce

### **13 Economic Development (24%)**

#### **11 Transportation (20%)**

#### **5 Technology (9%)**

#### **3 Tourism**

#### **2 Environmental, Solar Energy, and Marketing**

# Agenda Item

7b

Final MLK Meeting Schedule

7b

7b

# Your Community

## Your VOICE.

*Help Build Your Future!*

What types of business  
does your community  
need?

Have YOU ever  
considered opening your  
own business?

Do you have ideas for  
new business ventures?

Be part of the future of  
your community!

Attend one of these  
meetings to let your  
voice be heard!

### SAVE THE DATES! MEETING SCHEDULE



**Tuesday, February 16<sup>th</sup>**

Dr. Carrie Robinson Center  
2990 Edison Ave

**Time:** 6:00pm – 8:00pm

**01**



**Thursday, February 18<sup>th</sup>**

Quality of Life Center of SW Florida  
3210 Dr. Martin Luther King Jr. Blvd

**Time:** 6:00pm – 8:00pm

**02**



**Tuesday, February 23<sup>rd</sup>**

Housing Authority of the City of Fort Myers  
4224 Renaissance Preserve Way

**Time:** 6:00pm – 8:00pm

**03**



**Thursday, February 25<sup>th</sup>**

Mt. Harmon Ministries  
2856 Douglas Ave

**Time:** 6:00pm – 8:00pm

**04**

*Be Part of the Future of Your Community!*



# Agenda Item

8

Staff Summaries

8

8

\_\_\_\_\_Agenda  
\_\_\_\_\_Item

8a

# Grant Activity Sheet (Information Only)

8a

8a

## SWFRPC Grant Summary As Of February 3, 2016

Awarded and Ongoing Projects					Pending Grant Submittals					Completed Projects					Rejected Grant Submittals			
#	Agency	Type	Awarded	Funding Agency	Project Mgr.	Project Name	LOI Due Date	LOI Date Submitted	App Due Date	Date Submitted	Date Awarded/Denied	Date Contract Signed	Project Total	RPC Amt	Start Date	End Date	Deliverables	Total Match Amt-RPC
1	SWFRPC	Grant	Yes	CTD - FL Commission for the Transportation Disadvantaged	Nichole Gwinnett	FY15-16 Glades-Hendry TD Agreement					7/1/2015		\$38,573.00	\$38,573.00			Update of TDSP, CTC Evaluation, Staff Support, LCB Quarterly Meetings, Committee Meetings, Update By-Laws and Grievance Procedures.	\$0.00
2	SWFRPC	Grant	Yes	DEM - FL Div. of Emergency Management	Nichole Gwinnett	FY15-16 HMEP Planning and Training Grant						9/28/2015	\$73,922.00	\$73,922.00	10/1/2015	9/30/2016	HMEP related projects and trainings	\$0.00
3	SWFRPC	Grant	Yes	EPA- Environmental Protection Agency	Jim Beever	Developing a Method to Use Ecosystem Services to Quantify Wetland Restoration Successes	1/30/2015	1/30/2015	3/17/2015	3/17/2015	8/5/2015	9/15/2015	\$234,071.00	\$174,071.00	10/1/2015	9/30/2016	Products of the study will include updated valuations of the ecosystem services provided by existing conservation lands in the CHNEP; an updated conservation lands mapping of the project study area; a documentation and quantification of the ecosystem services provided by each habitat type, etc.	\$60,000.00
4	SWFRPC	Grant	Yes	DEM - FL Div. of Emergency Management	Nichole Gwinnett	FY15-16 LEPC Agreement			6/30/2015	5/15/2015	6/11/2015	6/11/2015	\$48,000.00	\$48,000.00	7/1/2015	6/20/2016	Staff support to the LEPC, Plan Development and Exercise, Technical Assistance and Training Coordination/Planning.	\$0.00



#	Agency	Type	Awarded	Funding Agency	Project Mgr.	Project Name	LOI Due Date	LOI Date Submitted	App Due Date	Date Submitted	Date Awarded/Denied	Date Contract Signed	Project Total	RPC Amt	Start Date	End Date	Deliverables	Total Match Amt-RPC
5	SWFRPC	Contract	Yes	Glades County	Tim Walker	Glades County Small Quantity Generators (SQG)						5/17/2012	\$3,900.00	\$3,900.00	5/17/2012	5/16/2017	The goal of the assessment, notification, and verification program is to inform Small Quantity Generators (SQGs) of their legal responsibilities, limit the illegal disposal of hazardous waste, and identify the location of waste operators for an update to State officials. Also, local knowledge of hazardous waste is useful for land development planning, emergency protective services, health care and water quality management.	\$0.00
6	SWFRPC	Contract	Yes	DOE - US Dept. of Energy	Rebekah Harp	Solar Ready II	1/24/2013	1/24/2013		3/22/2013	7/18/2013		\$140,000.00	\$90,000.00	7/1/2013	1/1/2016	Recruit local governments to review and adopt BMPs. Host stakeholder meetings and/or training programs, providing technical assistance to local governments as needed, and tracking any policy adoptions and local government feedback.	\$50,000.00
7	SWFRPC	Grant	Yes	EDA - US Economic Development Administration	Jennifer Pellechio	EDA Planning Grant			1/22/2013	12/18/2013	4/18/2014	4/21/14	\$270,000.00	\$189,000.00	1/1/2014	12/31/2016	CEDS Plan, Annual Reports, CEDS Working Committee	\$81,000.00
8	SWFRPC	Grant	Yes	Visit Florida	Jennifer Pellechio	OUR CREATIVE ECONOMY Marketing			2/9/2015	2/9/2015	6/25/2015	6/26/2015	\$5,000.00	\$2,500.00	7/1/2015	6/15/2016	TBD	\$2,500.00
9	SWFRPC	Contract	Yes	EPA/CHNEP - Charlotte Harbor National Estuary Program	Jim Beever	Mangrove Loss Project			4/4/2014	4/4/2014	12/19/2014		\$243,324.00	\$60,000.00	Oct 2014	Sept 2016	Report, transect information, presentations, articles	\$63,800.00
10	SWFRPC	Grant	Yes	City of Bonita Springs	Jim Beever	Spring Creek Restoration Plan							\$50,000.00	\$50,000.00	Jan 2015	Feb 2016	The Spring Creek Vulnerability Assessment and The Spring Creek	\$0.00

#	Agency	Type	Awarded	Funding Agency	Project Mgr.	Project Name	LOI Due Date	LOI Date Submitted	App Due Date	Date Submitted	Date Awarded/Denied	Date Contract Signed	Project Total	RPC Amt	Start Date	End Date	Deliverables	Total Match Amt-RPC
11	SWFRPC	Grant	Yes	DEO - FL Dept. of Economic Opportunity	Jennifer Pellechio	Southwest Florida Rail Corridor Preservation Plan				6/16/2015	8/3/2015		\$39,000.00				Comprehensive Plan language, GIS maps of the rail corridor, Stakeholder meetings and public involvement activities	
12	SWFRPC	Grant	Yes	DEO - FL Dept. of Economic Opportunity	Jennifer Pellechio	Clewiston Main Street Revitalization Plan				6/16/2015	8/3/2015		\$25,000.00				Outreach materials, Public meetings, Develop community vision, Identify low cost strategies for improvement, Final report	
13	SWFRPC	Grant	Yes	DEO - FL Dept. of Economic Opportunity	Jennifer Pellechio	Community Planning Technical Assistance Grants- City of Fort Myers				6/15/2015			\$30,000.00		10/1/2015	5/31/2016	Educational Program Curriculum, Community Preference Analysis and Visual Preference Assessment, Report results	
14	SWFRPC	PO	Yes	SFRPC- South Florida Regional Planning Council	Rebekah Harp	Train the Trainers Grant						1/25/2016	\$10,000.00	\$10,000.00	1/1/2016	3/31/2017	Trainers and Tools: Building Coastal Flood Hazard Resiliency in Florida's Regional Planning Council Communities.	\$0.00
15	SWFRPC	PO	Yes	TBRPC - Tampa Bay Regional Planning Council	Rebekah Harp	2016 Disaster Planning Guide					1/28/2016		\$4,000.00	\$4,000.00	2/5/2015	3/1/2015	2015 Disaster Planning Guide for 8 counties English and Spanish	\$0.00
16	SWFRPC	Grant	Yes	DEM - FL Div. of Emergency Management	Tim Walker	Collier Hazard Analysis FY15-16						7/1/2015	\$9,693.00	\$9,693.00	8/16/2015	6/30/2016		
17	SWFRPC	Grant	Pending	EPA- Environmental Protection Agency	Jennifer Pellechio	Brownfields 2016			12/18/2015	12/18/2015			\$280,000.00	\$280,000.00			10 ASTM-AAI compliant Phase I ESAs, 1 Generic Quality Assurance Project Plan, 4 SQAPPs, 4 Phase II ESAs, 4 ABCAs	
18	SWFRPC	Grant	Complete	DEM - FL Div. of Emergency Management	Nichole Gwinnett	FY14-15 HMEP Planning Grant Modification					9/11/2015		\$13,000.00	\$13,000.00	10/1/2015	12/13/2015	Trainings	\$0.00
19	SWFRPC	Grant	Complete	EPA - US Environmental Protection Agency	Jim Beever	A Unified Conservation Easement Mapping and Database for the State of Florida			4/15/2013	4/8/2013	6/3/2013		\$294,496.00	\$148,996.00	10/1/2013	9/30/2015	GIS database with Conservation Easements	\$145,500.00
20	SWFRPC	Grant	Complete	EPA - US Environmental Protection Agency	Jim Beever	WQFAM							\$160,000.00	\$160,000.00	10/1/2011	9/30/2015	Extention 2014-2015	\$0.00

#	Agency	Type	Awarded	Funding Agency	Project Mgr.	Project Name	LOI Due Date	LOI Date Submitted	App Due Date	Date Submitted	Date Awarded/Denied	Date Contract Signed	Project Total	RPC Amt	Start Date	End Date	Deliverables	Total Match Amt-RPC
21	SWFRPC	Grant	Complete	EDA - US Economic Development Administration	Jennifer Pellechio	Advanced Manufacturing in West Central Florida An Ecosystem Analysis Supporting Regional Development				12/26/2013	9/3/2014		\$116,514.00	\$58,257.00			SWOT Analysis, Web Survey, REMI, Regional website, branding strategy, brochures	\$30,584.45
22	SWFRPC	Grant	Complete	DEM - FL Div. of Emergency Management	Nichole Gwinnett	FY14-15 HMEP Planning						2/4/2015	\$22,000.00	\$22,000.00	10/1/2014	9/30/2015	Major Planning Project; travel coordination for LEPC Chairman; LEPC program coordination and quarterly reports.	\$0.00
23	SWFRPC	Contract	Complete	NADO- National Association of Development Organizations	Jennifer Pellechio	CEDS Resiliency Section Technical Assistance												
24	SWFRPC	PO	Complete	TBRPC - Tampa Bay Regional Planning Council	Rebekah Harp	Tampa Bay RPC Graphics and Publications					10/21/2014	10/21/2014			10/21/2014	5/29/2015	As needed publication and graphic design, including FOR (Future of the Regions) award materials and annual report.	\$0.00
25	SWFRPC	PO	Complete	TBRPC - Tampa Bay Regional Planning Council	Rebekah Harp	2015 Disaster Planning Guide					1/28/2015		\$4,000.00	\$4,000.00	2/5/2015	3/1/2015	2015 Disaster Planning Guide for eight counties in English and Spanish.	\$0.00
26	SWFRPC	Grant	Complete	DEM - FL Div. of Emergency Management	Tim Walker	Collier Hazard Analysis					12/5/2014		\$8,042.00	\$8,042.00	12/23/2014	6/15/2015	There are 4 deliverables stipulated with the contractual agreement.	\$0.00
27	SWFRPC	Grant	Complete	Visit Florida	Margaret Wuerstle	Our Creative Economy: Video - Southwest Florida Regional Strategy for Public Art			2/18/2014	2/18/2014	5/14/2014	7/17/14	\$10,000.00	\$5,000.00	7/1/2014	5/31/2015		\$5,000.00
28	SWFRPC	Grant	Complete	DEO - FL Dept. of Economic Opportunity	Margaret Wuerstle	Agriculture Tours to Promote Assets and Economic Development in the City of LaBelle			6/6/2014	5/7/2014	8/26/2014		\$25,000.00	\$20,000.00	12/1/2014	5/31/2015	City of LaBelle Agriculture Tour Plan	\$0.00
29	SWFRPC	Grant	Complete	CTD - FL Commission for the Transportation Disadvantaged	Nichole Gwinnett	Glades-Hendry TD Planning Agreement FY2014-15					5/16/2014		\$38,573.00	\$38,573.00	7/1/2014	6/30/2015	Update of TDSP, CTC Evaluation, Staff Support, LCB Quarterly Meetings, Committee Meetings, Update By-Laws and Grievance Procedures.	\$0.00

#	Agency	Type	Awarded	Funding Agency	Project Mgr.	Project Name	LOI Due Date	LOI Date Submitted	App Due Date	Date Submitted	Date Awarded/Denied	Date Contract Signed	Project Total	RPC Amt	Start Date	End Date	Deliverables	Total Match Amt-RPC
30	SWFRPC	Contract	Complete	DEM - FL Div. of Emergency Management	Nichole Gwinnett	Title III (LEPC) FY14-15					7/1/2014	9/24/2014	\$42,000.00	\$42,000.00	7/1/2014	6/30/2015	LEPC Program Coordination; attendance during four (4) local quarterly meetings; attendance during four (4) state quarterly meetings; quarterly reports; quarterly news articles/updates; annual LEPC plan update; industry compliance support; housing of chemical data, meeting minutes; exercise coordination; publishing of public availability notice; etc .	\$0.00
31	SWFRPC	Grant	No	USDA - US Dept. of Agriculture	Margaret Wuerstle	Farm to School			5/20/2015	5/20/2015	11/19/2015							
32	SWFRPC	Grant	No	DEO - FL Dept. of Economic Opportunity	Jennifer Pellechio	Growing Markets for Small Farmers				6/17/2015				\$25,000			Identify needs of local farmers, identify sellers for the market, Prudce a map and marketing materials, Implement action plan	
33	SWFRPC	Grant	No	WalMart	C.J. Kammerer	GoodWheels			7/17/2015	7/16/2015	9/10/2015			\$50,000			Run transporation routes between Clewsiton and Belle Glade	
34	SWFRPC	Grant	No	DEO - FL Dept. of Economic Opportunity	Jennifer Pellechio	SWF "Know Your Zone" Public Education Campaign				6/17/2015	8/7/2015			\$30,000			Design a logo, Prepare education program and curriculum, introduce campaign and schedules, Create Diaster Planning Guide, Present to schools	

#	Agency	Type	Awarded	Funding Agency	Project Mgr.	Project Name	LOI Due Date	LOI Date Submitted	App Due Date	Date Submitted	Date Awarded/Denied	Date Contract Signed	Project Total	RPC Amt	Start Date	End Date	Deliverables	Total Match Amt-RPC
35	SWFRPC	Grant	No	DEO - FL Dept. of Economic Opportunity	Jennifer Pellechio	Strategic Opportunity Plan for Immokalee				5/26/2015	8/7/2015			\$25,000			Task 1: Demographics & Economic Study; Task 2: Community Vision & Stakeholder Engagement ; Task 3: Goal Development (with Steering Committee) ; Task 4: Implementation Guide and Strategic Action Plan (3 – 5 years)	
36	SWFRPC	Grant	No	DEO - FL Dept. of Economic Opportunity	Jennifer Pellechio	Hendry County Regional Laborshed/Workforce Assessment				6/17/2015	8/7/2015			\$25,000			Hire consultant, Meeting with Hendry County, Draft Material for Hendry presentation, Final assessment and recommendations	
37	SWFRPC	Grant	No	EDA - US Economic Development Administration	Jennifer Pellechio	EDA- North Port			6/12/2015	6/12/2015	8/3/2015							
38	SWFRPC	Grant	No	NOAA - National Oceanic and Atmospheric Administration	Jim Beever	Measuring and Forecasting Future Ecosystem Services in the CHNEP Study Area	1/30/2015	1/30/2015	3/17/2015	3/17/2015			\$400,000.00				Products of the study will include updated valuations of the ecosystem services provided by existing conservation lands in the CHNEP; an updated conservation lands mapping of the project study area; a documentation and quantification of the ecosystem services provided by each habitat type, etc.	
39	SWFRPC	Grant	No	Florida Humanities Council	Jennifer Pellechio	Public Art Field Guide and Map Viewer for Lee County	01/15/2015	01/15/2015	3/11/2015	3/5/2015	5/11/2015		\$15,000.00	\$15,000.00			TBD	\$0.00
40	SWFRPC	Grant	No	Artplace America	Margaret Wuerstle	ArtPlace - "OUR CREATIVE ECONOMY"			3/12/2015	3/11/2015			\$3,000,000	\$3,000,000			TBD	\$0.00
41	SWFRPC	Grant	No	EPA - US Environmental Protection Agency	John Gibbons	Environmental Workforce Development Job Training			2/3/2015	2/3/2015			\$200,000.00	\$200,000.00			OSHA 29 CFR 1910.120 40-Hour HAZWOPER and other training.	\$0.00

#	Agency	Type	Awarded	Funding Agency	Project Mgr.	Project Name	LOI Due Date	LOI Date Submitted	App Due Date	Date Submitted	Date Awarded/Denied	Date Contract Signed	Project Total	RPC Amt	Start Date	End Date	Deliverables	Total Match Amt-RPC
42	SWFRPC	Grant	No	NEA - National Endowment for the Arts	Margaret Wuerstle	Our Creative Economy - A Regional Strategy for Southwest Florida's Public Art and Cultural Venues			1/15/2015	1/14/2015			\$400,000.00	\$200,000.00			• Asset Mapping • A Regional Strategy for Enhancing Public Art: A SWOT • Southwest Florida's Public Art and Cultural Venues Field and Tour Guide	\$113,472.00
43	SWFRPC	Contract	No	NACo - National Association of Counties	Jennifer Pellechio	NACo County Prosperity Summit			10/3/2014	10/3/2014			\$0.00	\$0.00			Summit	\$0.00
44	SWFRPC	Grant	No	EPA - US Environmental Protection Agency	Dottie Cook	Southwest Florida Brownfields Coalition			12/19/2014	12/19/2014	5/27/2015		\$600,000.00	\$600,000.00				\$0.00
45	RC&DC	Grant	No	Southwest Florida Community Foundation	Nichole Gwinnett	SWFRPC & RC&DC Collaboration			9/30/2014	9/30/2014			\$25,000.00	\$25,000.00			Provide information to the non-profit community about collaborative models that have succeeded in our area and to share proven effective practices for non-profits working together.	\$0.00
46	SWFRPC	Grant	No	USDA - US Dept. of Agriculture	Dottie Cook	Southwest Florida Rural Promise Zone	10/17/2014	10/14/2014	11/21/2014	11/21/2014			Technical Assistance	Technical Assistance			Rural designation of a Promise Zone for Immokalee in Collier County, Glades County, and Hendry County	\$0.00
47	RC&DC	Grant	No	Dreyfus Foundation - The Max and Victoria Dreyfus Foundation	Beth Nightingale	"Our Creative Economy - A Regional Strategy for Southwest Florida Public Art, Festivals and Cultural Venues"	11/10/2014	11/10/2014					\$20,000.00	\$20,000.00			1. complete the Lee County public art descriptions (name of artist, year of creation, material, and significance); 2. provide QR Codes for Lee County's public art assets which will drive traffic to the Guide and direct users to other public art assets and venues; and 3. Create and promote a photo share site to encourage making art (photography) from art (public art assets and venues).	\$0.00

# Agenda Item

9

9

## Consent Agenda

9

9

## **Consent Agenda Summary**

### **Agenda Item #10(a) - Intergovernmental Coordination and Review**

The attached report summarizes the project notifications received from various governmental and non-governmental agencies seeking federal assistance or permits for the period beginning January 1, 2016 and ending January 31, 2016.

**RECOMMENDED ACTION:** Information purposes only

### **Agenda Item #10(b) - Charlotte County Comp Plan Amendment (DEO 15-7 ESR)**

Charlotte 15-7 ESR proposes to make text changes to the FLU Element and its appendices, Natural Resource Element, and Coastal Planning Policy of the Smart Charlotte 2050 Comprehensive Plan.

Several policies involving Babcock Ranch are eliminated. These policies are no longer necessary now that Babcock Ranch is a DRI. Redundant and duplicate language regarding the Critical Wildlife Corridor Map is also eliminated.

**RECOMMENDED ACTION:** Staff recommends that this proposal be found not regionally significant.

### **Agenda Item #10(c) – Glades County Comp Plan Amendment (DEO 15-1 ESR)**

Glades County 15-1 ESR changes the FLUC of 2 properties from Residential to Commercial. The 2 parcels total in roughly 33.73 acres.

One of the parcels will become an RV park with a maximum density of 60 units (this parcel is already adjacent to an RV Park). The other will become a 5 acre commercial retail/office center, while retaining existing buildings and uses for a church and youth center (this parcel is adjacent to another property with a Commercial FLUC).

**RECOMMENDED ACTION:** Staff recommends that this proposal be found not regionally significant.

### **Agenda Item #10(d) – City of Bonita Springs Comp Plan Amendment (DEO 15-1 ESR)**

Bonita Springs 15-1 ESR involves a 55.2 acre parcel within Pelican Landing that was annexed from Lee County in 2014. The parcel will be given a Moderate Density Mixed Use / Planned Development FLUC under the City's comprehensive plan. Maximum density will not increase, as it is still determined by the Pelican Landing DRI. The amendment also proposes to eliminate a 75 foot height restriction for vested structures and properties as mutually agreed pursuant to an Annexation Agreement.

**RECOMMENDED ACTION:** Staff recommends that this proposal be found not regionally significant.



# --- Agenda --- Item

9a

Intergovernmental Coordination and  
Review

9a

9a

## Project Review and Coordination Regional Clearinghouse Review

The attached report summarizes the project notifications received from various governmental and non-governmental agencies seeking federal assistance or permits for the period beginning January 1, 2016 and ending January 31, 2016.

The staff of the Southwest Florida Regional Planning Council reviews various proposals, Notifications of Intent, Preapplications, permit applications, and Environmental Impact Statements for compliance with regional goals, objectives, and policies of the Regional Comprehensive Policy Plan. The staff reviews such items in accordance with the Florida Intergovernmental Coordination and Review Process (Chapter 29I-5, F.A.C.) and adopted regional clearinghouse procedures.

Council staff reviews projects under the following four designations:

Less Than Regionally Significant and Consistent - no further review of the project can be expected from Council.

Less Than Regionally Significant and Inconsistent - Council does not find the project to be of regional importance, but notes certain concerns as part of its continued monitoring for cumulative impacts within the noted goal areas.

Regionally Significant and Consistent - Project is of regional importance and appears to be consistent with Regional goals, objectives and policies.

Regionally Significant and Inconsistent - Project is of regional importance and appears not to be consistent with Regional goals, objectives, and policies. Council will oppose the project as submitted, but is willing to participate in any efforts to modify the project to mitigate the concerns.

The report includes the SWFRPC number, the applicant name, project description, location, funding or permitting agency, and the amount of federal funding, when applicable. It also includes the comments provided by staff to the applicant and to the State Clearinghouse (Office of Planning and Budgeting) in Tallahassee.

**RECOMMENDED ACTION:** Information purposes only.

02/2016

## *Review in Progress*

<i>SWFRPC #</i>	<i>First Name</i>	<i>Last Name</i>	<i>Location</i>	<i>Project Description</i>	<i>Funding Agent</i>	<i>Funding Amount</i>	<i>Council Comments</i>
2015-05			Lee County	Lee County Transit - Section 5311 Non-Urbanized Program Grant - Rural Operating Assistance for Lee County.	FTA	\$184,582.00	Review in Progress
2015-13			Sarasota County	FDEP - Joint Coastal Permit (File No. 0333315-001-JC) - City of Sarasota and the USACOE - The proposed project is to nourish 1.6 miles of shoreline on Lido Key from Department Reference Monuments R-34.5 to R-44.			Review in Progress
2016-02			Region	USACOE, Jacksonville District - Draft Environmental Impact Statement for the Herbert Hoover Dike Dam Safety Modification Study in Florida.			Review in Progress
2016-03			Charlotte County	Charlotte County Transit - 49 USC Section 5311 Rural Grant Application	FTA - FDOT	\$165,710.00	Review in Progress
2016-04			Charlotte County	Charlotte County Transit - 49 USC Section 5311 Rural Grant Application	FTA - FDOT	\$125,000.00	Review in Progress

<i><b>SWFRPC #</b></i>	<i><b>First Name</b></i>	<i><b>Last Name</b></i>	<i><b>Location</b></i>	<i><b>Project Description</b></i>	<i><b>Funding Agent</b></i>	<i><b>Funding Amount</b></i>	<i><b>Council Comments</b></i>
2016-05			Charlotte County	Charlotte County Transit - 49 USC Section 5310 Enhanced Mobility of Seniors and Individuals with Disabilities	FTA - FDOT	\$131,324.00	Review in Progress
2016-06			Charlotte County	Charlotte County Transit - 49 USC Section 5339 Rural Areas and Capital Assistance	FTA - FDOT	\$293,750.00	Review in Progress
2016-07			Charlotte County	Charlotte County Transit - 49 USC Section 5310 New Freedom Program for Seniors and Disabled	FTA - FDOT	\$105,000.00	Review in Progress
2016-08			Charlotte County	Charlotte County Government - Charlotte County Neighborhood Revitalization Project CDBG Grant #16DB-OF-09-18-01-N20			Review in Progress
2016-09			Glades and Hendry Counties	Good Wheels, Inc. - Section 5310 - Driver training for new hires and required continuing education; rural area funding within an urban area to transport dialysis patients; grant management; and web improvements including ADA features.	FTA - FDOT	\$395,600.00	Review in Progress
2016-10			Glades and Hendry Counties	Good Wheels, Inc. - Section 5311 - Bus service for Food Desert; grant management; and web improvements including ADA features; and management costs.	FTA - FDOT	\$282,040.00	Review in Progress

<i>SWFRPC #</i>	<i>First Name</i>	<i>Last Name</i>	<i>Location</i>	<i>Project Description</i>	<i>Funding Agent</i>	<i>Funding Amount</i>	<i>Council Comments</i>
2016-11				Good Wheels, Inc. - Section 5310 - Replacement vehicles, expansion of vehicles, IT equipment, and replacement parts for existing vehicles.	FTA - FDOT	\$902,042.58	Review in Progress
2016-12			Glades and Hendry Counties	Good Wheels, Inc. - Section 5311 - Replacement vehicles	FTA - FDOT	\$143,892.00	Review in Progress

# Agenda Item

9b

# Charlotte County DEO 15-7 ESR

9b

9b



## LOCAL GOVERNMENT COMPREHENSIVE PLAN AMENDMENTS CHARLOTTE COUNTY

The Council staff has reviewed the proposed evaluation and appraisal based amendments to the Charlotte County Comprehensive Plan (DEO 15-7ESR). These amendments were developed under the Local Government Comprehensive Planning and Land Development Regulation Act. A synopsis of the requirements of the Act and Council responsibilities is provided as Attachment I. Comments are provided in Attachment II. Site location maps can be reviewed in Attachment III.

Staff review of the proposed amendments was based on whether they were likely to be of regional concern. This was determined through assessment of the following factors:

1. Location--in or near a regional resource or regional activity center, such that it impacts the regional resource or facility; on or within one mile of a county boundary; generally applied to sites of five acres or more; size alone is not necessarily a determinant of regional significance;
2. Magnitude--equal to or greater than the threshold for a Development of Regional Impact of the same type (a DRI-related amendment is considered regionally significant); and
3. Character--of a unique type or use, a use of regional significance, or a change in the local comprehensive plan that could be applied throughout the local jurisdiction; updates, editorial revisions, etc. are not regionally significant.

A summary of the results of the review follows:

### Factors of Regional Significance

<u>Proposed Amendment</u>	<u>Location</u>	<u>Magnitude</u>	<u>Character</u>	<u>Consistent</u>
DEO 15-7ESR	No	No	No	(1) Not regionally significant (2) Consistent with SRPP

### RECOMMENDED ACTION:

Approve staff comments. Authorize staff to forward comments to the Department of Economic Opportunity and the Charlotte County Planning and Development Services Director.

## COMMUNITY PLANNING ACT

### **Local Government Comprehensive Plans**

The Act requires each municipal and county government to prepare a comprehensive plan that must include at least the following nine elements:

1. Future Land Use Element;
2. Traffic Circulation Element;  
A local government with all or part of its jurisdiction within the urbanized area of a Metropolitan Planning Organization shall prepare and adopt a transportation element to replace the traffic circulation; mass transit; and ports, aviation, and related facilities elements. [9J-5.019(1), FAC]
3. General Sanitary Sewer, Solid Waste, Drainage, and Potable Water and Natural Groundwater Aquifer Recharge Element;
4. Conservation Element;
5. Recreation and Open Space Element;
6. Housing Element;
7. Coastal Management Element for coastal jurisdictions;
8. Intergovernmental Coordination Element; and
9. Capital Improvements Element.

The local government may add optional elements (e. g., community design, redevelopment, safety, historical and scenic preservation, and economic).

All local governments in Southwest Florida have adopted revised plans:

Charlotte County, Punta Gorda

Collier County, Everglades City, Marco Island, Naples

Glades County, Moore Haven

Hendry County, Clewiston, LaBelle

Lee County, Bonita Springs, Cape Coral, Fort Myers, Fort Myers Beach, Sanibel

Sarasota County, Longboat Key, North Port, Sarasota, Venice



## **COMPREHENSIVE PLAN AMENDMENTS**

A local government may amend its plan at any time during the calendar year. Six copies of the amendment are sent to the Department of Economic Opportunity (DEO) for review. A copy is also sent to the Regional Planning Council, the Water Management District, the Florida Department of Transportation, and the Florida Department of Environmental Protection.

The proposed amendments will be reviewed by DEO in two situations. In the first, there must be a written request to DEO. The request for review must be received within forty-five days after transmittal of the proposed amendment. Reviews can be requested by one of the following:

- the local government that transmits the amendment,
- the regional planning council, or
- an affected person.

In the second situation, DEO can decide to review the proposed amendment without a request. In that case, DEO must give notice within thirty days of transmittal.

Within five working days after deciding to conduct a review, DEO may forward copies to various reviewing agencies, including the Regional Planning Council.

### **Regional Planning Council Review**

The Regional Planning Council must submit its comments in writing within thirty days of receipt of the proposed amendment from DEO. It must specify any objections and may make recommendations for changes. The review of the proposed amendment by the Regional Planning Council must be limited to "effects on regional resources or facilities identified in the Strategic Regional Policy plan and extra-jurisdictional impacts which would be inconsistent with the comprehensive plan of the affected local government".

After receipt of comments from the Regional Planning Council and other reviewing agencies, DEO has thirty days to conduct its own review and determine compliance with state law. Within that thirty-day period, DEO transmits its written comments to the local government.

**NOTE: THE ABOVE IS A SIMPLIFIED VERSION OF THE LAW. REFER TO THE STATUTE (CH. 163, FS) FOR DETAILS.**

## **CHARLOTTE COUNTY COMPREHENSIVE PLAN AMENDMENT (DEO 15-7ESR)**

### **Summary of Proposed Amendment**

Charlotte County Comprehensive Plan Amendment DEO 15-7ESR is a text amendment package to The Smart Charlotte 2050 Comprehensive Plan. Smart Charlotte 2050 became effective in June 2011, since then it became apparent to the County that some policies needed to be revised in order to fulfill the vision that was established in the Plan, exercise the “Home Rule” authority as provided for in the County’s Charter, and better guide redevelopment and future development within the County. At the Board’s direction, staff had been working on revisions to the following elements of the Plan:

- Future Land Use (FLU) Element
- FLU Appendix I: Land Use Guide
- FLU Appendix III: Definitions
- Natural Resources (ENV)
- Coastal Planning (CST)- CST Policy 3.2.5

In September 2014, ordinances for each of those five categories were adopted to revise the plan. However, several groups and petitioners filed challenges to those ordinances. Over the past several months, the County and the Petitioners had been working together in order to resolve any differences that were identified in the challenges. On July 14, 2015, the Board rescinded the adopted ordinances and requested staff to work on additional revisions to the previously adopted revisions to the Plan. Charlotte County DEO 15-7ESR is a revised amendment package incorporating changes based on the objections of the petitioners.

The amendment removes several policies relating to Babcock Ranch. All of these policies were established before Babcock Ranch was a DRI. The adopted Babcock DRI Development Orders, Babcock Land Development Regulations, Babcock Pattern Book as well as various agreements support removing some of the policies related to Babcock. All these changes were transmitted to the state agencies for review and comment and the state agencies had no comments.

The amendment also removes ENV Policy 2.2.9: Critical Wildlife Corridors Map. The Critical Wildlife Corridor Map is still a required part of the Comprehensive Plan under the FLU Element (FLU Policy 2.2.1 and FLU Policy 6.2.11 Item 3). The policy under the ENV Element has been removed from the plan because it is seen as duplicate information from the FLU Element.

### **Regional Impacts**

Council staff has reviewed the requested changes and finds that the requested Comprehensive Plan amendments do not directly produce any significant regional impacts that would be inconsistent with the Comprehensive Plan of any other local government within the region.

### **Extra-Jurisdictional Impacts**

Council staff has reviewed the requested changes and finds that the requested Comprehensive Plan amendments do not directly produce any significant extra-jurisdictional impacts that would be inconsistent with the Comprehensive Plan of any other local government within the region.

**Conclusion**

No adverse effects on regional resources or facilities and no extra-jurisdictional impacts have been identified. Staff finds that this project is not regionally significant.

**Recommendation**

Approve staff comments. Authorize staff to forward comments to the Department of Economic Opportunity and the Charlotte County Planning and Development Services Director.

# MAPS

**Charlotte County**

**DEO 15-7ESR**

**Growth Management Plan**

**Comprehensive Plan Amendment**

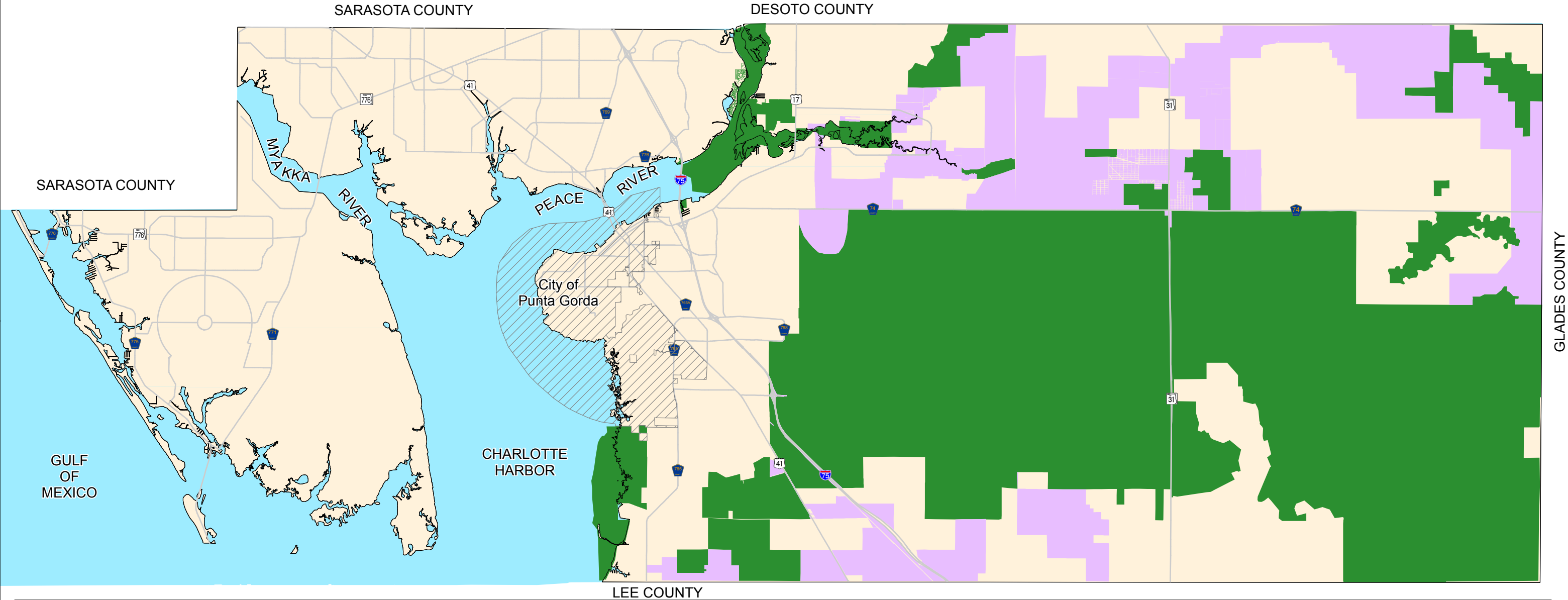


Land Information  
Section

# CHARLOTTE COUNTY

## Future Land Use Map Series

### Map #22: Critical Wildlife Corridors



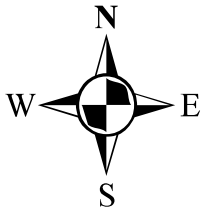
#### LEGEND

Stateplane Projection  
Datum: NAD83  
Units: Feet

Source: CCGIS  
Growth Management

Metadata available upon request

 **Wildlife Corridor Critical Linkages**  **Resource Conservation & Preservation**



2 1 0 2 Miles

$$g_c$$

# Glades County DEO 15-1ESR

$$9c$$
$$9c$$



## LOCAL GOVERNMENT COMPREHENSIVE PLAN AMENDMENTS GLADES COUNTY

The Council staff has reviewed the proposed evaluation and appraisal based amendments to the Glades County Comprehensive Plan (DEO 15-1ESR). These amendments were developed under the Local Government Comprehensive Planning and Land Development Regulation Act. A synopsis of the requirements of the Act and Council responsibilities is provided as Attachment I. Comments are provided in Attachment II. Site location maps can be reviewed in Attachment III.

Staff review of the proposed amendments was based on whether they were likely to be of regional concern. This was determined through assessment of the following factors:

1. Location--in or near a regional resource or regional activity center, such that it impacts the regional resource or facility; on or within one mile of a county boundary; generally applied to sites of five acres or more; size alone is not necessarily a determinant of regional significance;
2. Magnitude--equal to or greater than the threshold for a Development of Regional Impact of the same type (a DRI-related amendment is considered regionally significant); and
3. Character--of a unique type or use, a use of regional significance, or a change in the local comprehensive plan that could be applied throughout the local jurisdiction; updates, editorial revisions, etc. are not regionally significant.

A summary of the results of the review follows:

### Factors of Regional Significance

<u>Proposed</u>				
<u>Amendment</u>	<u>Location</u>	<u>Magnitude</u>	<u>Character</u>	<u>Consistent</u>
DEO 15-1ESR	No	No	No	(1) Not Regionally Significant (2) Consistent with SRPP

### RECOMMENDED ACTION:

Approve staff comments. Authorize staff to forward comments to the Department of Economic Opportunity and Glades County

**01/2016**

## COMMUNITY PLANNING ACT

### **Local Government Comprehensive Plans**

The Act requires each municipal and county government to prepare a comprehensive plan that must include at least the following nine elements:

1. Future Land Use Element;
2. Traffic Circulation Element;  
A local government with all or part of its jurisdiction within the urbanized area of a Metropolitan Planning Organization shall prepare and adopt a transportation element to replace the traffic circulation; mass transit; and ports, aviation, and related facilities elements. [9J-5.019(1), FAC]
3. General Sanitary Sewer, Solid Waste, Drainage, and Potable Water and Natural Groundwater Aquifer Recharge Element;
4. Conservation Element;
5. Recreation and Open Space Element;
6. Housing Element;
7. Coastal Management Element for coastal jurisdictions;
8. Intergovernmental Coordination Element; and
9. Capital Improvements Element.

The local government may add optional elements (e. g., community design, redevelopment, safety, historical and scenic preservation, and economic).

All local governments in Southwest Florida have adopted revised plans:

Charlotte County, Punta Gorda

Collier County, Everglades City, Marco Island, Naples

Glades County, Moore Haven

Hendry County, Clewiston, LaBelle

Lee County, Bonita Springs, Cape Coral, Fort Myers, Fort Myers Beach, Sanibel

Sarasota County, Longboat Key, North Port, Sarasota, Venice



## **COMPREHENSIVE PLAN AMENDMENTS**

A local government may amend its plan at any time during the calendar year. Six copies of the amendment are sent to the Department of Economic Opportunity (DEO) for review. A copy is also sent to the Regional Planning Council, the Water Management District, the Florida Department of Transportation, and the Florida Department of Environmental Protection.

The proposed amendments will be reviewed by DEO in two situations. In the first, there must be a written request to DEO. The request for review must be received within forty-five days after transmittal of the proposed amendment. Reviews can be requested by one of the following:

- the local government that transmits the amendment,
- the regional planning council, or
- an affected person.

In the second situation, DEO can decide to review the proposed amendment without a request. In that case, DEO must give notice within thirty days of transmittal.

Within five working days after deciding to conduct a review, DEO may forward copies to various reviewing agencies, including the Regional Planning Council.

### **Regional Planning Council Review**

The Regional Planning Council must submit its comments in writing within thirty days of receipt of the proposed amendment from DEO. It must specify any objections and may make recommendations for changes. The review of the proposed amendment by the Regional Planning Council must be limited to "effects on regional resources or facilities identified in the Strategic Regional Policy plan and extra-jurisdictional impacts which would be inconsistent with the comprehensive plan of the affected local government".

After receipt of comments from the Regional Planning Council and other reviewing agencies, DEO has thirty days to conduct its own review and determine compliance with state law. Within that thirty-day period, DEO transmits its written comments to the local government.

**NOTE: THE ABOVE IS A SIMPLIFIED VERSION OF THE LAW. REFER TO THE STATUTE (CH. 163, FS) FOR DETAILS.**

## **GLADES COUNTY COMPREHENSIVE PLAN AMENDMENT (DEO 15-1ESR)**

**RECEIVED: DECEMBER: 28, 2015**

### **Summary of Proposed Amendment**

The amendment package consists of two amendments (COMP15-01LS and COMP15-02LS) and requests to change the Future Land Use Map designation of the subject sites from Residential to Commercial. The subject site for COMP15-01LS is 21.2 acres and the request to Commercial is for the purpose of developing an approximately 5 acre commercial retail/office center, while retaining existing buildings and uses for a church and youth center on the east side of the property. The property is also undergoing a Planned Development rezoning. The subject site is adjacent to property with a Commercial FLU to the North.

The subject site for COMP15-02LS is 12.53 acres and the request to Commercial is for the purpose of developing an RV Park. The property is also undergoing a rezoning to Commercial Recreational Vehicle and is self-limiting the RV density to 60 units, which will be officially restricted when the applicant submits the site plan for Planning and Zoning Board approval. The subject site is adjacent to properties that are already zoned as Commercial Recreational Vehicle (C-RV).

### **Regional Impacts**

Council staff has reviewed the requested changes and finds that the requested Comprehensive Plan amendments do not directly produce any significant regional impacts that would be inconsistent with the Comprehensive Plan of any other local government within the region.

### **Extra-Jurisdictional Impacts**

Council staff has reviewed the requested changes and finds that the requested Comprehensive Plan amendments do not directly produce any significant extra-jurisdictional impacts that would be inconsistent with the Comprehensive Plan of any other local government within the region.

### **Conclusion**

No adverse effects on regional resources or facilities and no extra-jurisdictional impacts have been identified. Staff finds that this project is not regionally significant.

### **Recommended Action**

Approve staff comments. Authorize staff to forward comments to the Department of Economic Opportunity and Glades County.

# MAPS

**Glades County**

**DEO 15-1ESR**

**Growth Management Plan**

**Comprehensive Plan Amendment**

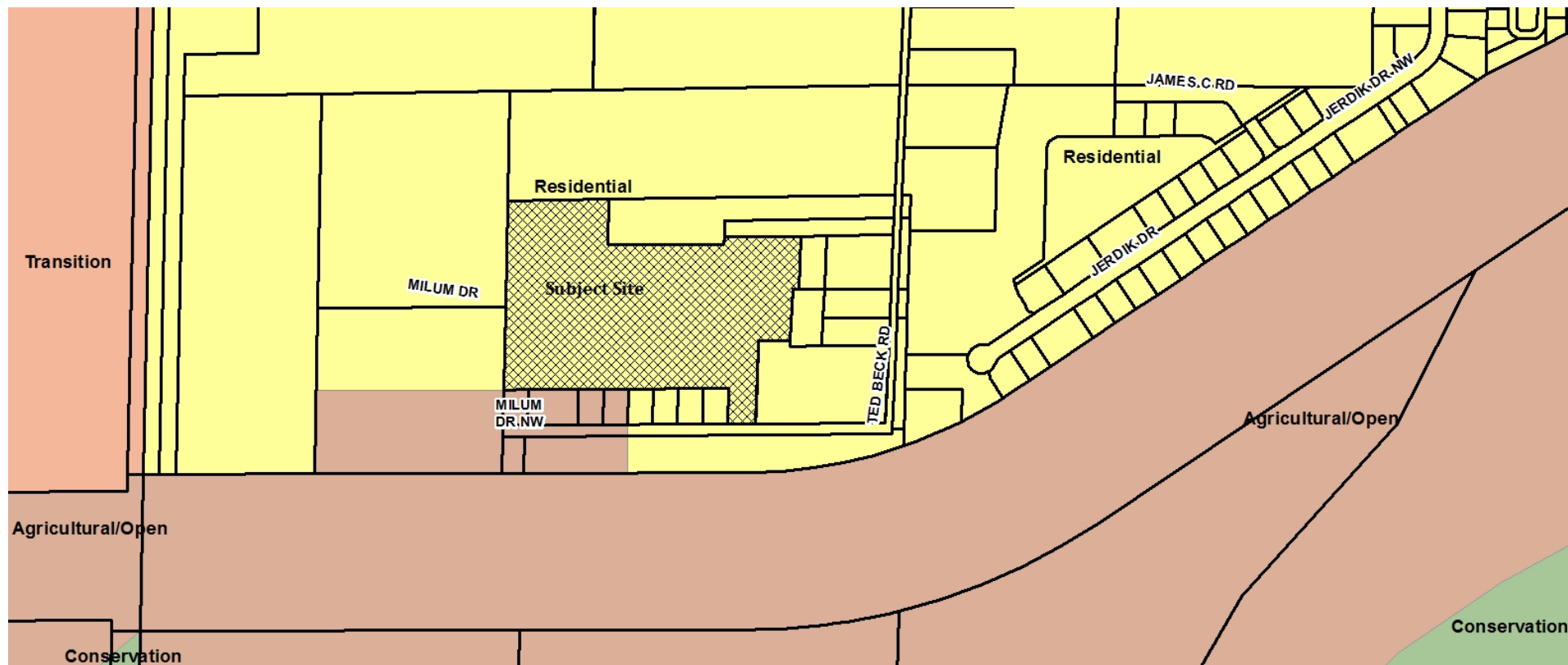
Existing Land Use Map  
Lakeport RV Park  
COMP15-02LS



Red line is boundary of the subject site.

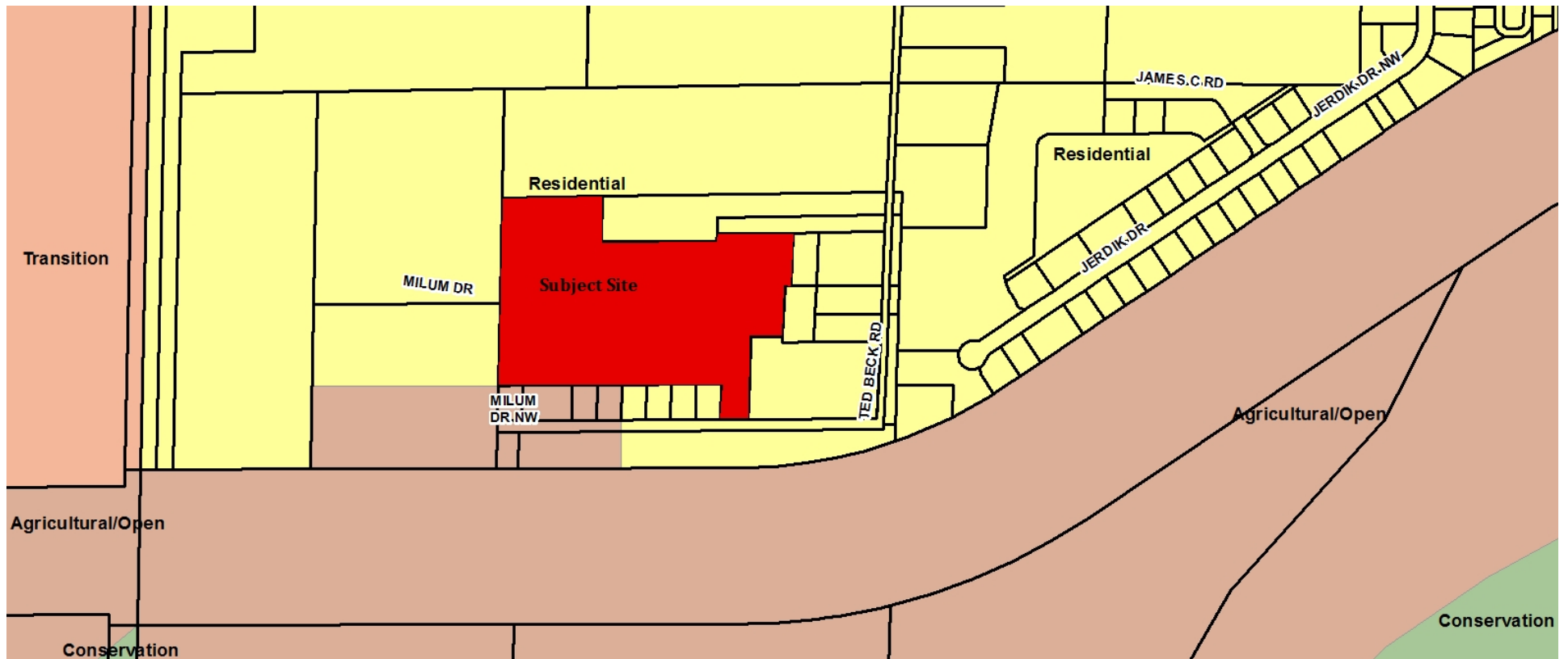
Subject site is 12.53 Acres.

Future Land Use Map  
Lakeport RV Park  
COMP15-02LS



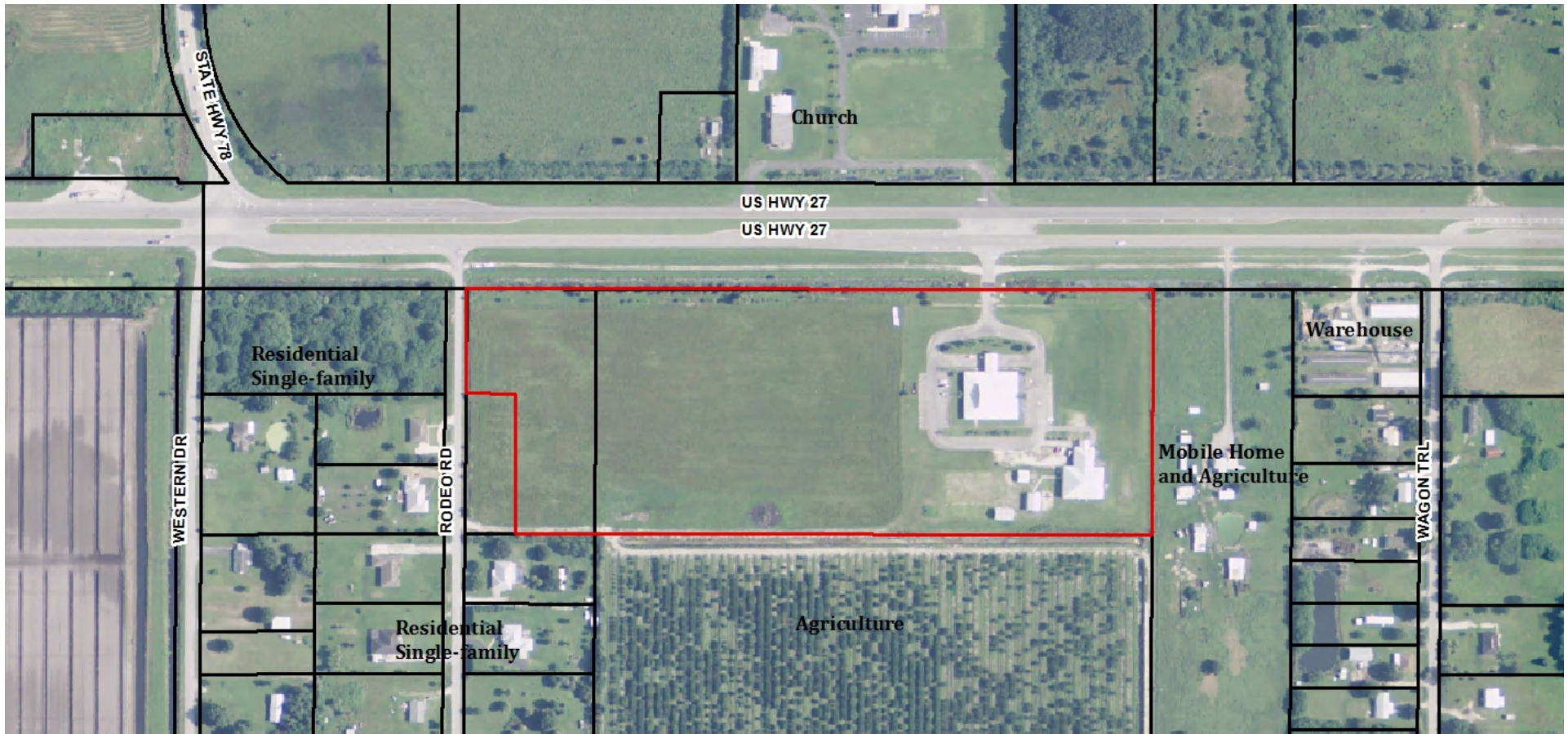
Hatched area indicates subject site.

Proposed Future Land Use Map  
Lakeport RV Park  
COMP15-02LS





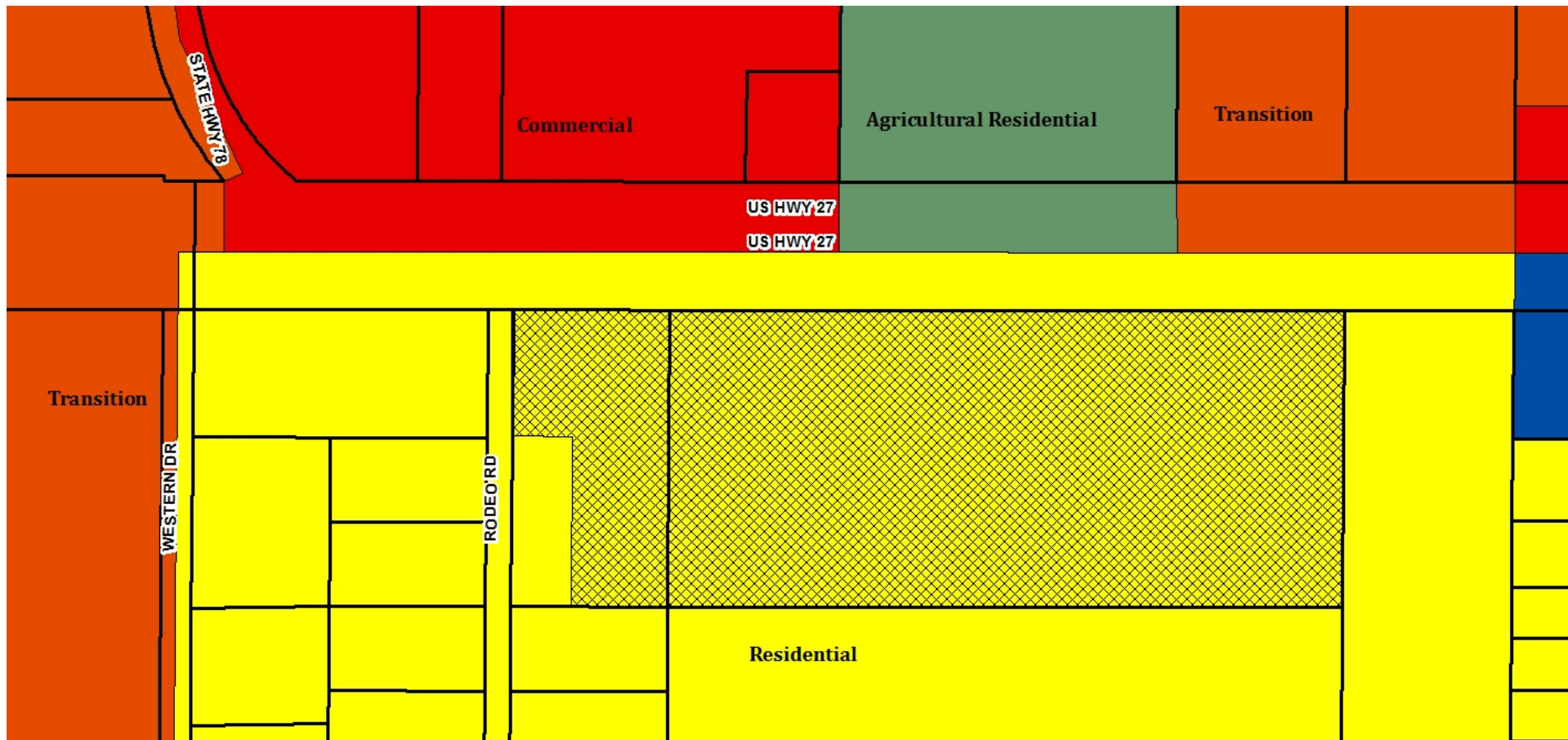
Existing Land Use Map  
JJ Wiggins Memorial Trust  
COMP15-01LS



Red line is boundary of the subject site.

Subject site is 21.2 Acres.

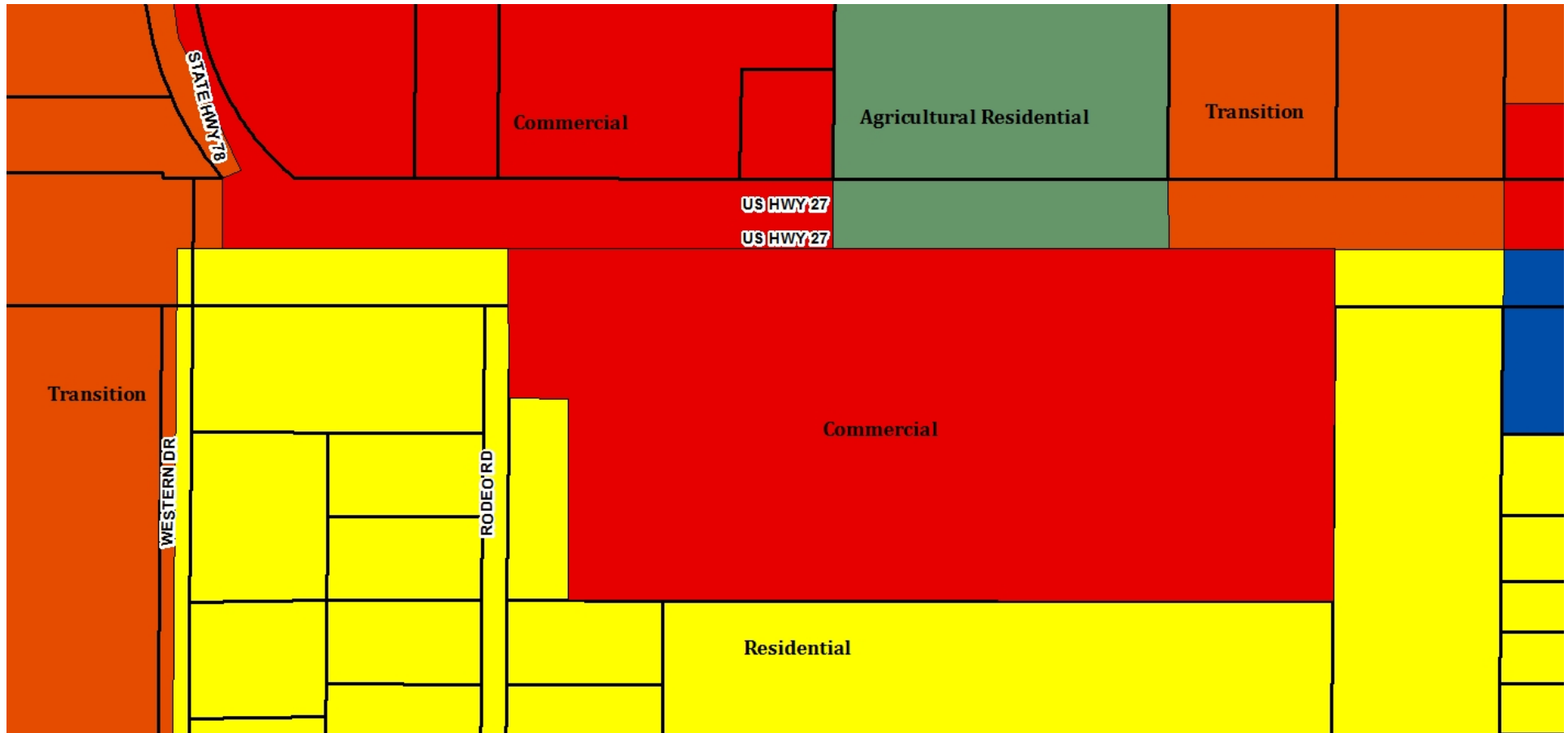
Existing Future Land Use Map  
JJ Wiggins Memorial Trust  
COMP15-01LS



Hatched area indicates subject site.



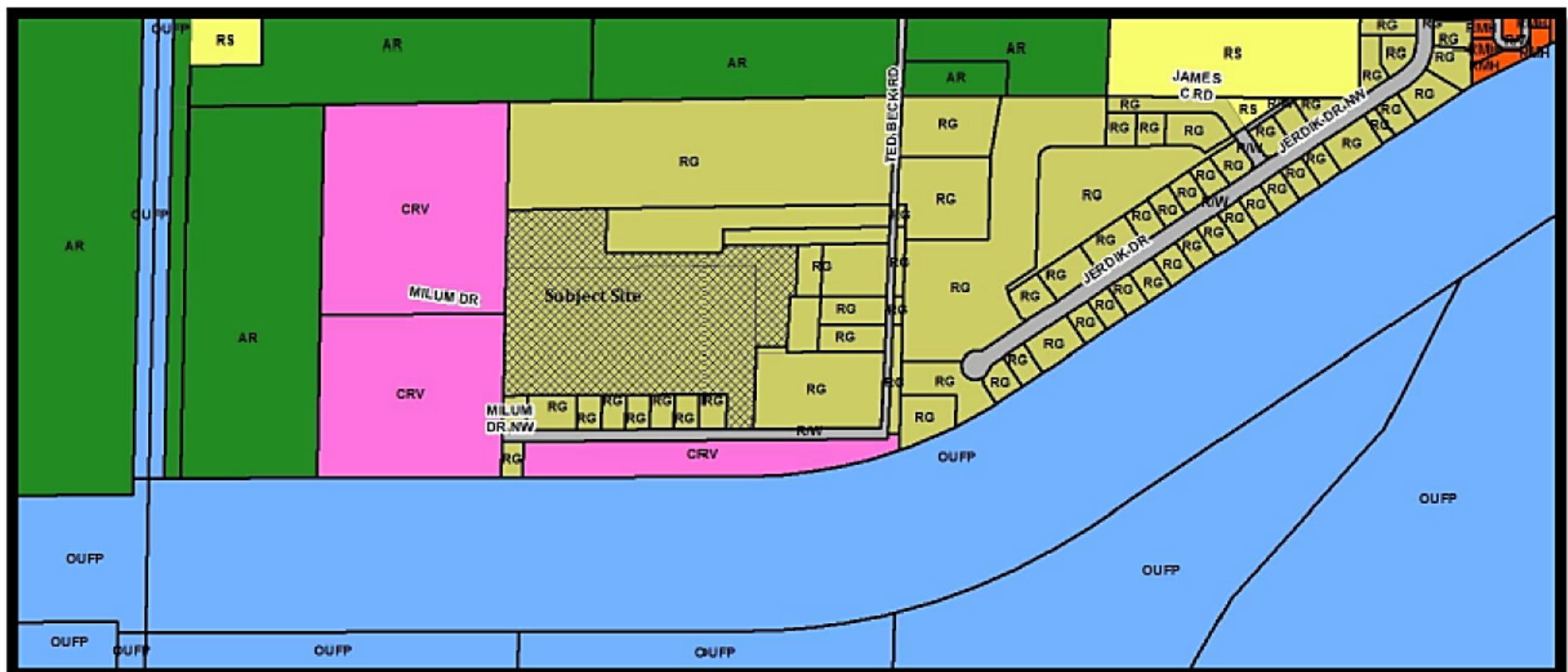
Proposed Future Land Use Map  
JJ Wiggins Memorial Trust  
COMP15-01LS



## ZONING DISTRICT MAP

The Subject Site is zoned Residential General (RG). Surrounding Zoning Districts are Commercial Recreational Vehicle (C-RV) and RG.

*Hatched area is subject site*



# --- Agenda Item ---

9d

City of Bonita Springs  
DEO 15-1 ESR

9d

9d



## LOCAL GOVERNMENT COMPREHENSIVE PLAN AMENDMENTS CITY OF BONITA SPRINGS

The Council staff has reviewed the proposed evaluation and appraisal based amendments to the City of Bonita Springs Comprehensive Plan (DEO 15-1ESR). These amendments were developed under the Local Government Comprehensive Planning and Land Development Regulation Act. A synopsis of the requirements of the Act and Council responsibilities is provided as Attachment I. Comments are provided in Attachment II. Site location maps can be reviewed in Attachment III.

Staff review of the proposed amendments was based on whether they were likely to be of regional concern. This was determined through assessment of the following factors:

1. Location--in or near a regional resource or regional activity center, such that it impacts the regional resource or facility; on or within one mile of a county boundary; generally applied to sites of five acres or more; size alone is not necessarily a determinant of regional significance;
2. Magnitude--equal to or greater than the threshold for a Development of Regional Impact of the same type (a DRI-related amendment is considered regionally significant); and
3. Character--of a unique type or use, a use of regional significance, or a change in the local comprehensive plan that could be applied throughout the local jurisdiction; updates, editorial revisions, etc. are not regionally significant.

A summary of the results of the review follows:

### Factors of Regional Significance

<u>Proposed Amendment</u>	<u>Location</u>	<u>Magnitude</u>	<u>Character</u>	<u>Consistent</u>
DEO 15-1ESR	No	No	No	(1) Not regionally significant (2) Consistent with SRPP

### RECOMMENDED ACTION:

Approve staff comments. Authorize staff to forward comments to the Department of Economic Opportunity and the City of Bonita Springs.

## COMMUNITY PLANNING ACT

### **Local Government Comprehensive Plans**

The Act requires each municipal and county government to prepare a comprehensive plan that must include at least the following nine elements:

1. Future Land Use Element;
2. Traffic Circulation Element;  
A local government with all or part of its jurisdiction within the urbanized area of a Metropolitan Planning Organization shall prepare and adopt a transportation element to replace the traffic circulation; mass transit; and ports, aviation, and related facilities elements. [9J-5.019(1), FAC]
3. General Sanitary Sewer, Solid Waste, Drainage, and Potable Water and Natural Groundwater Aquifer Recharge Element;
4. Conservation Element;
5. Recreation and Open Space Element;
6. Housing Element;
7. Coastal Management Element for coastal jurisdictions;
8. Intergovernmental Coordination Element; and
9. Capital Improvements Element.

The local government may add optional elements (e. g., community design, redevelopment, safety, historical and scenic preservation, and economic).

All local governments in Southwest Florida have adopted revised plans:

Charlotte County, Punta Gorda

Collier County, Everglades City, Marco Island, Naples

Glades County, Moore Haven

Hendry County, Clewiston, LaBelle

Lee County, Bonita Springs, Cape Coral, Fort Myers, Fort Myers Beach, Sanibel

Sarasota County, Longboat Key, North Port, Sarasota, Venice

## **COMPREHENSIVE PLAN AMENDMENTS**

A local government may amend its plan at any time during the calendar year. Six copies of the amendment are sent to the Department of Economic Opportunity (DEO) for review. A copy is also sent to the Regional Planning Council, the Water Management District, the Florida Department of Transportation, and the Florida Department of Environmental Protection.

The proposed amendments will be reviewed by DEO in two situations. In the first, there must be a written request to DEO. The request for review must be received within forty-five days after transmittal of the proposed amendment. Reviews can be requested by one of the following:

- the local government that transmits the amendment,
- the regional planning council, or
- an affected person.

In the second situation, DEO can decide to review the proposed amendment without a request. In that case, DEO must give notice within thirty days of transmittal.

Within five working days after deciding to conduct a review, DEO may forward copies to various reviewing agencies, including the Regional Planning Council.

### **Regional Planning Council Review**

The Regional Planning Council must submit its comments in writing within thirty days of receipt of the proposed amendment from DEO. It must specify any objections and may make recommendations for changes. The review of the proposed amendment by the Regional Planning Council must be limited to "effects on regional resources or facilities identified in the Strategic Regional Policy plan and extra-jurisdictional impacts which would be inconsistent with the comprehensive plan of the affected local government".

After receipt of comments from the Regional Planning Council and other reviewing agencies, DEO has thirty days to conduct its own review and determine compliance with state law. Within that thirty-day period, DEO transmits its written comments to the local government.

**NOTE: THE ABOVE IS A SIMPLIFIED VERSION OF THE LAW. REFER TO THE STATUTE (CH. 163, FS) FOR DETAILS.**

## **CITY OF BONITA SPRINGS COMPREHENSIVE PLAN AMENDMENT (DEO 15-1ESR)**

**RECEIVED: DECEMBER 18, 2015**

### **Summary of Proposed Amendment**

The proposed amendment encompasses one separate parcel that was annexed into the City of Bonita Springs in 2014. Per Florida Statutes 171.062(2) if the area annexed was subject to a county land use plan and county zoning or subdivision regulations, those regulations will remain in full force and effect until the municipality adopts a comprehensive plan amendment that includes the annexed area.

The parcel is approximately 55.2 acres (50.2 suburban, 5 wetlands under Lee County's FLU Categories) and is currently a part of the Pelican Landing DRI. The FLU will change to Moderate Density Mixed Use Planned Development under the City of Bonita Springs' plan. The wetland portion of the parcel is protected by a conservation easement. The amendment is not proposing a density increase from the Pelican Landing DRI.

The proposed amendment is to an existing FLU Category to allow non-residential and residential uses at the density and intensity of the Moderate Density Mixed-Use/Planned Development, which is the classification of those Pelican Landing properties within the City's limits. The amendment allows for an increase in the maximum allowable height to structures which were vested in accordance with the City's Vested Rights Determination within the City of Bonita Springs comprehensive plan or those properties as mutually agreed and contemplated to pursuant to an Annexation Agreement.

### **Regional Impacts**

Council staff has reviewed the requested changes and finds that the requested Comprehensive Plan amendments do not directly produce any significant regional impacts that would be inconsistent with the Comprehensive Plan of any other local government within the region.

FDOT has reviewed the amendment package and stated that they "are not anticipated to adversely impact important State transportation resources or facilities."

The South Florida Water Management District has no comment on the amendment package.

### **Extra-Jurisdictional Impacts**

Council staff has reviewed the requested changes and finds that the requested Comprehensive Plan amendments do not directly produce any significant extra-jurisdictional impacts that would be inconsistent with the Comprehensive Plan of any other local government within the region.

### **Conclusion**

No adverse effects on regional resources or facilities and no extra-jurisdictional impacts have been identified. Staff finds that this project is not regionally significant.

### **Recommendation**

Approve staff comments. Authorize staff to forward comments to the Department of Economic Opportunity and the City of Bonita Springs.



## *Florida Department of Transportation*

**RICK SCOTT**  
GOVERNOR

10041 Daniels Parkway  
Fort Myers, FL 33913

**JIM BOXOLD**  
SECRETARY

January 12, 2016

Jacqueline Toemmes Genson, AICP  
Planning and Zoning Manager  
City of Bonita Springs Community Development  
9220 Bonita Beach Road  
Bonita Springs, FL 34135

### **RE: Bonita Springs 15-1ESR Proposed Comprehensive Plan Amendment (Expedited State Review) – FDOT Comments and Recommendations**

Dear Ms. Genson:

The Florida Department of Transportation (FDOT), District One, has reviewed the Bonita Springs 15-1ESR, Proposed Comprehensive Plan Amendment (CPA). The 15-1ESR Proposed CPA was transmitted under the Expedited State Review process by the City Council on November 18, 2015, in accordance with the requirements of Florida Statutes (F.S.) Chapter 163, and received by FDOT on December 23, 2015. The Department offers the City of Bonita Springs the following comments and recommendations for your consideration.

The proposed amendment, includes a future land use map (FLUM) amendment and a related text amendment to the Future Land Use Element (FLUE).

#### **FLUM Amendment**

The proposed FLUM amendment includes one parcel that was annexed into the City of Bonita Springs in 2014 (Ordinance No. 14-10). As a result, this request is to amend property from the Lee County FLU category of Outlying Suburban (50.196 acres) and Wetlands (4.964 acres) to City of Bonita Springs FLU category Moderate Density Mixed Use Planned Development (55.16 acres).

The property is currently a part of the Pelican Landing Development of Regional Impact (DRI), which transverse three jurisdictions (Bonita Springs, Villages of Estero, and unincorporated Lee County). The applicant is not proposing to increase residential density beyond what is permitted in the Pelican Landing DRI, and will maintain the original number of dwelling units as approved in the Pelican Landing Residential Planned Development (RPD)/Commercial Planned Development (CPD) zoning categories.

#### **Text Amendment**

The proposed text amendment is to the existing FLU category Moderate Density Mixed Use/Planned Development which removes the allowable structures height restriction of 75 feet for structures vested in accordance with the City's Vested Rights Determination, within the City of



Ms. Jacqueline Toemmes Genson, AICP  
Bonita Springs 15-IESR Proposed CPA – FDOT Comments and Recommendations  
January 12, 2016  
Page 2 of 2

Bonita Springs Comprehensive Plan, or within the Pelican Landing area annexed within the City pursuant to Ordinance No. 14-10.

This amendment allows for an increase in the maximum allowable height to vested structures to accommodate the applicant's redevelopment plans for up to four high-rise residential towers that exceed the 75 feet; per the annexation agreement.

**FDOT Comment #1:**

The proposed text amendment has the potential to increase the density and intensity of development for the subject property; however, the applicant is not requesting any increases at this time. In the event the applicant would like to increase development at a future date, the applicant is required to follow the DRI procedures outlined in Florida Statutes 380.06, for a notice of proposed change (NOPC) and/or substantial deviation, as applicable.

Because the applicant is not proposing to increase residential density beyond what is permitted in the Pelican Landing DRI and/or the Pelican Landing RPD/CPD, and based on the DRI procedures as outlined in Florida Statutes 380.06 which states that any future increases from the approved DRI development program is required to be submitted as a NOPC and/or substantial deviation, as applicable, *the Department has determined that the changes associated with the Proposed Map and Text Amendments are not anticipated to adversely impact important State transportation resources or facilities. At such time as any further changes to the development program may be requested, the Department will review those changes and determine if there are any impacts to State resources or facilities.*

Thank you for providing FDOT with the opportunity to review and comment on the proposed amendment. If you have any questions please free to contact me at (239) 225-1981 or sarah.catala@dot.state.fl.us.

Sincerely,



Sarah Catala  
SIS/Growth Management Coordinator  
FDOT District One

CC: Mr. Ray Eubanks, Florida Department of Economic Opportunity

**From:** [Margaret Wuerstle](#)  
**To:** [DANIEL TRESKOTT](#); [Charles Kammerer](#)  
**Subject:** FW: City of Bonita Springs, DEO # 15-1ESR Comments on Proposed Comprehensive Plan Amendment Package  
**Date:** Tuesday, January 05, 2016 3:52:24 PM  
**Attachments:** [image001.png](#)  
[image002.png](#)  
[image003.png](#)  
[image004.png](#)

---

## Margaret Wuerstle

### Executive Director

Southwest Florida Regional Planning Council

1926 Victoria Avenue

Fort Myers, FL 33901

239.338.2550 x222

239.281.6978 (cell)

email: [mwuerstle@swfrpc.org](mailto:mwuerstle@swfrpc.org)

web: [www.swfrpc.org](http://www.swfrpc.org)



PLEASE NOTE: Florida has a very broad public records law. Most written communications to or from government officials regarding government business are public records available to the public and media upon request. Your e-mail communications may be subject to public disclosure.

---

**From:** Oblaczynski, Deborah [mailto:[doblaczy@sfwmd.gov](mailto:doblaczy@sfwmd.gov)]  
**Sent:** Tuesday, January 05, 2016 3:29 PM  
**To:** Jacqueline Genson ([jgenson@cityofbonitaspringscd.org](mailto:jgenson@cityofbonitaspringscd.org))  
**Cc:** Ray Eubanks ([DCPexternalagencycomments@deo.myflorida.com](mailto:DCPexternalagencycomments@deo.myflorida.com)); Brenda Winningham ([brenda.winningham@deo.myflorida.com](mailto:brenda.winningham@deo.myflorida.com)); Margaret Wuerstle  
**Subject:** City of Bonita Springs, DEO # 15-1ESR Comments on Proposed Comprehensive Plan Amendment Package

Dear Ms. Genson:

The South Florida Water Management District (District) has completed its review of the proposed amendment package from the City of Bonita Springs (City). The proposed map and text amendment includes a recently annexed portion of the Pelican Landing DRI into the Future Land Use map. There appear to be no regionally significant water resource issues; therefore, the District has no comments on the proposed amendment package.

The District offers its technical assistance to the City and the Department of Economic Opportunity in developing sound, sustainable solutions to meet the City's future water supply needs and to protect the region's water resources. Please forward a copy of the adopted amendments to the District. Please contact me if you need assistance or additional information.

Sincerely,

Deb Oblaczynski  
Policy & Planning Analyst  
Water Supply Implementation Unit  
South Florida Water Management District  
3301 Gun Club Road  
West Palm Beach, FL 33406  
(561) 682-2544 or [doblaczy@sfwmd.gov](mailto:doblaczy@sfwmd.gov)

We value your opinion. Please take a few minutes to share your comments on the service you received from the District by clicking on this [link](#).

# MAPS

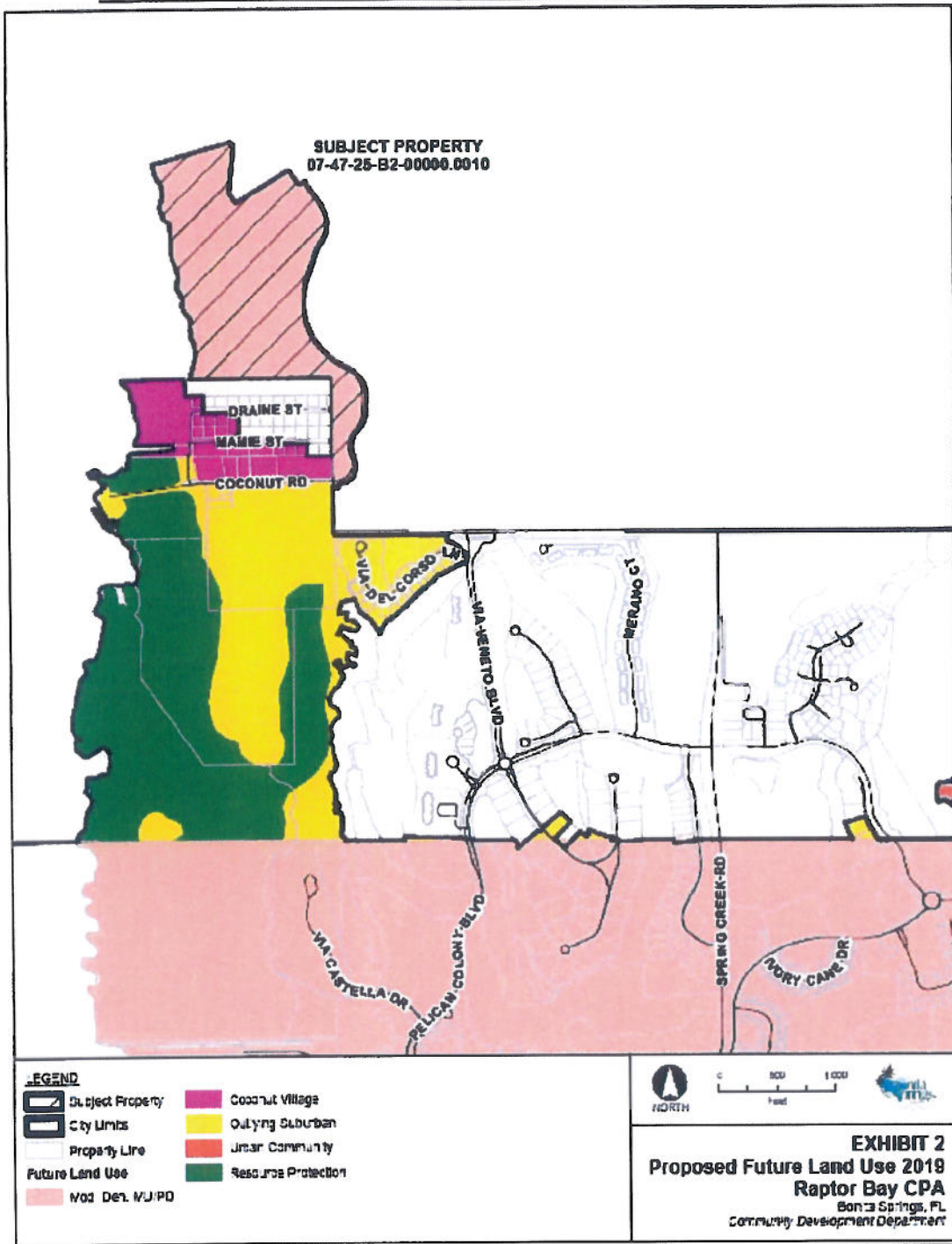
**City of Bonita Springs**

**DEO 15-1ESR**

**Growth Management Plan**

**Comprehensive Plan Amendment**

### Exhibit B - Future Land Use Map Amendment, CPA15-25286-BOS



**DRAFT FOR DISCUSSION PURPOSES**  
**DATE PREPARED: November 10, 2015**

**PAGE 7 OF 9**

U:\City Attorney\Ordinances\2015\16-\_\_ Comp Plan Amendment - Pelican Landing Raptor Bay - Moderate Density Mixed Use CLUP.doc

# Agenda Item

10

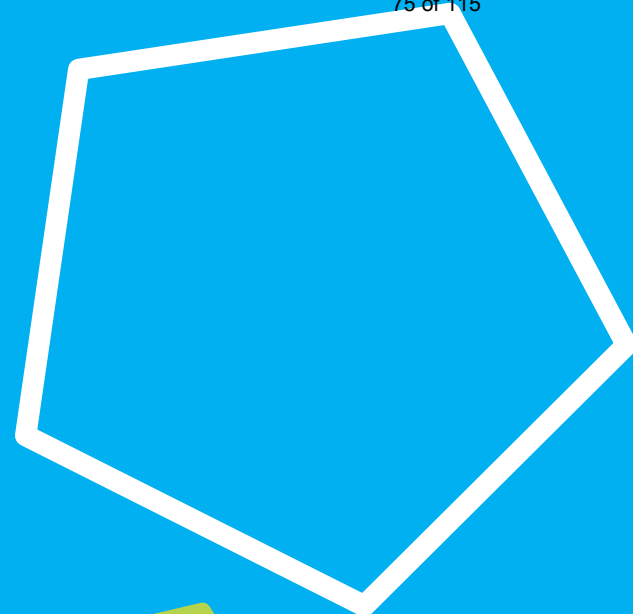
10

Regional Impact

10

10

# GROWTH MANAGEMENT PROGRAM



# GROWTH MANAGEMENT PLANNING



Funding for the reviews that Council will see today was funded through local jurisdiction dues and Applicant Fees.





# Bretonne Park NOPC





# BRETONNE PARK NOTICE OF PROPOSED CHANGE IN COLLIER COUNTY

78 of 115

- On November 24, 2015 a Bretonne Park DRI Notice of Proposed Change (NOPC) was submitted. The DRI is a residential project located in Collier County east of Naples between CR 856 (Radio Road) and SR 84 (Davis Boulevard) as identified in Attachment I.
- The project as originally proposed consisted of 1,380 dwelling units and 180,000 square feet of neighborhood commercial, with buildout occurring in five phases through 1998 (see Attachment II Master Development Plan).
- The DRI was amended twice. First to include a golf course and reduce commercial. Second to eliminate all commercial and replace with ALF units.
- The proposed DO amendment language is to clarify that “a maximum of ~~210~~ 270 Assisted Living Facility Units, of which up to and 60 may be Skilled Nursing Facility beds.
- Based on staff review and concurrence from DEO and Collier County Planning, the DRI DO amendment language is not necessary for this change because the DRI is essentially buildout and can be handled by Collier County under the provisions of Chapter 380.06(15)(g)3.
- This statute provision states: “(g) A local government shall not issue permits for development subsequent to the buildout date contained in the development order unless:
- **3. The development of regional impact is essentially built out, in that all the mitigation requirements in the development order have been satisfied, all developers are in compliance with all applicable terms and conditions of the development order except the buildout date, and the amount of proposed development that remains to be built is less than 40 percent of any applicable development-of-regional-impact threshold; or”**

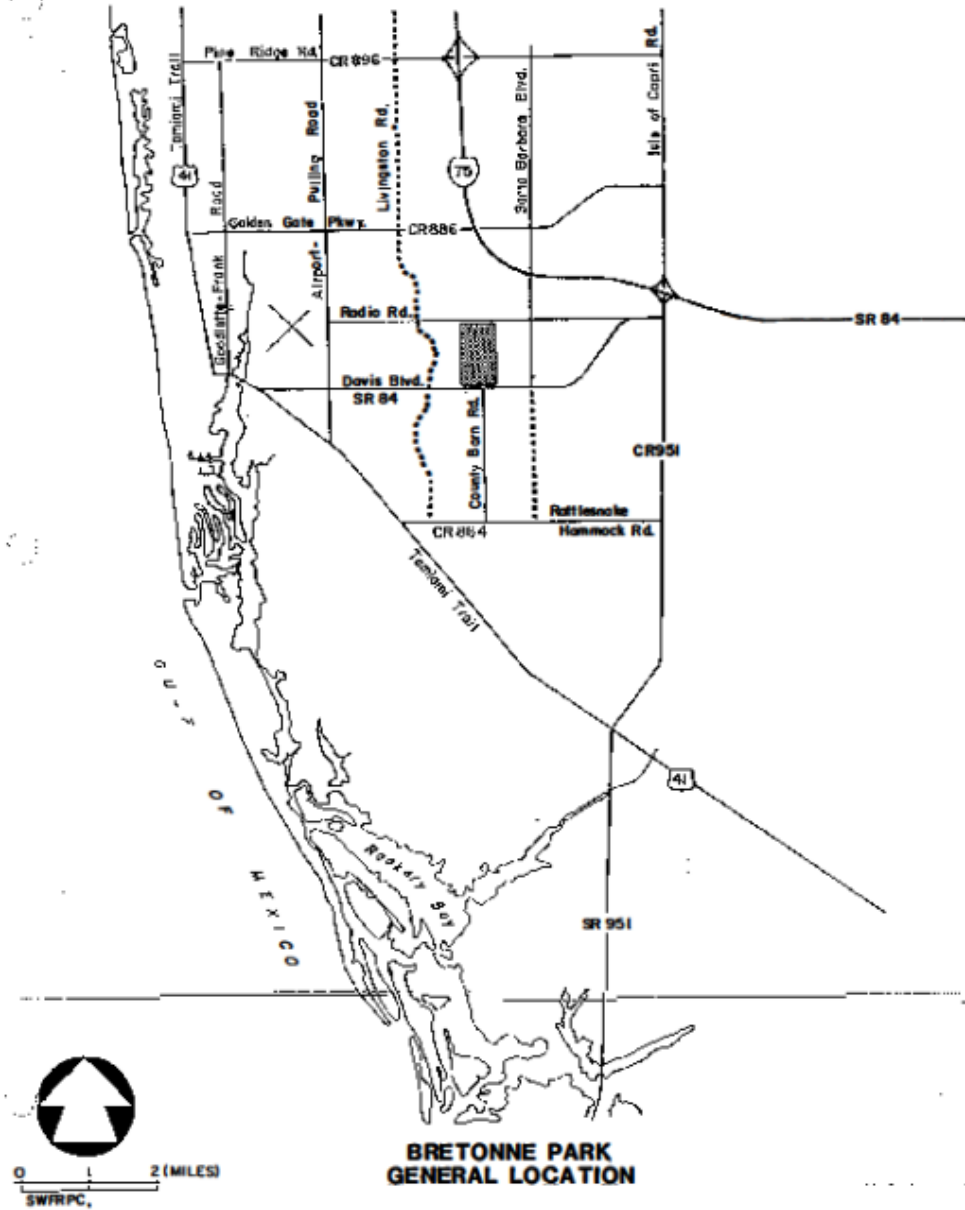


# BRETONNE PARK NOTICE OF PROPOSED CHANGE IN COLLIER COUNTY

---

79 of 115

- **RECOMMENDED ACTIONS:** Notify Collier County and the applicant that the proposed change will not create additional regional impacts or any regional impacts not previously reviewed by the regional planning council and that the minor clarification to the PUD can be made under the provisions of Florida Statutes Chapter 308.06(15)(g)3 as an essentially buildout DRI. No DRI DO amendment is necessary and Council participation at the local public hearing is not necessary, unless requested by the County for technical assistance purposes.





# Agenda Item

10a

10a

Bretonne Park NOPC

10a

BRETONNE PARK DRI  
NOTICE OF PROPOSED CHANGE IN COLLIER COUNTY

Background

The Bretonne Park DRI is a residential project located in Collier County east of Naples between CR 856 (Radio Road) and SR 84 (Davis Boulevard) as identified in Attachment I. The project as originally proposed consisted of 1,380 dwelling units and 180,000 square feet of neighborhood commercial, with buildout occurring in five phases through 1998. The Regional Planning Council recommended conditional approval of the project at the December 1986 meeting subject to conditions relating to the regional issues of Drainage/Water Quality, Energy, Transportation, Vegetation and Wildlife, Wetlands, and Consistency with the Local Comprehensive Plan. Collier County adopted Development Order (DO) 87-2 on April 7, 1987.

Previous Changes

The Development of Regional Impact (DRI) DO has been modified twice.

On August 23, 1988 Collier County DO 88-1 was adopted for the DRI to include a golf course and to decrease the commercial area from 180,000 to 130,000 square feet.

On January 21, 1999 Collier County DO 99-1 was adopted for the DRI to removed Commercial Land Use designation and added Adult Living Facility (ALF) and Skilled Nursing.

Proposed Change

The current DRI DO 99-1, which amended the original DO 88-1 in Section 4.2, allows for up to 210 ALF and 60 skilled nursing beds. A Certificate of Need (CON) has been approved for 30 of the 60 Skilled Nursing Beds. The developer/operator wishes to construct the facilities to operate the 30 skilled nursing beds for which the CON has been issued, but also wishes to construct this facility such that it can accommodate the additional 30 skilled nursing beds at such time as the additional CON is issued, and in the interim the facility be permitted to operate with 30 additional ALF units, or should the CON not be issued for all or a portion of the additional 30 skilled nursing beds, that the all or a portion of the additional 30 ALF units be permitted permanently.

The proposed DO Amendment is limited to the following (underlined language added and ~~strike through~~ language deleted):

Paragraph 4 of the Findings of Fact Section of DO 99-1 is proposed to be amended to read as follows:

4. The applicant proposes the development of Bretonne Park Planned Unit Development for 333.48 acres which includes: 11.5 acres with a maximum of ~~240~~ 270 Assisted Living Facility Units, of which up to ~~and~~ 60 may be Skilled Nursing Facility beds, and ancillary facilities, with a maximum floor area ratio (FAR) not to exceed a factor of 0.45, 1,380 dwelling units on 138.7 acres, and approximately 145.4 acres of other uses including parks/open space, eighteen (18) hole golf course, wetland preserve, and lakes.

### Staff Review

Based on staff review, discussions with the Department of Economic Development (DEO), Division of Community Development, and Collier County Planning we have agreed the DRI DO amendment language is not necessary for this change because the DRI is essentially buildout and can be handled by Collier County under the provisions of Chapter 380.06(15)(g)3, which states the following.

“(g) A local government shall not issue permits for development subsequent to the buildout date contained in the development order unless:

**3. The development of regional impact is essentially built out, in that all the mitigation requirements in the development order have been satisfied, all developers are in compliance with all applicable terms and conditions of the development order except the buildout date, and the amount of proposed development that remains to be built is less than 40 percent of any applicable development-of-regional-impact threshold; or**

The DRI meets all provisions of Paragraph 3 above. Based on the last monitoring report in 2010 all conditions of the DRI have been completed. Also, as stated by the applicant’s consultant in an email dated 1/27/16, “Collier County PUD Master List updated 12/15/15, the PUD is developed with the following: 330 single family units, 904 multi-family units, an 18 hole golf course, various open space, preserve and recreational amenity sites and 210 ALF units. The only remaining parcel to be developed in the DRI is a +/- 1.75 acre parcel, that will be developed with a Skilled Nursing Facility (SNF) and ALF Units. This is the final phase on the +/- 12 acres of the DRI presently allowing up to 210 ALF unit and up to 60 SNF beds ALF/SNF. The DRI is for all intents and purposes built out given that only 1.75 acres remains undeveloped of the overall 333.5 acre DRI. This equates to less than 1 percent of the overall DRI acreage”.

Finally, the DO buildout date is not clear in that the DO states “This Development Order shall remain in effect for the duration of the project”. The phasing schedule in the original Application for Development Approval and in the transportation section of the DO has buildout occurring in five phases through 1998. Therefore, the buildout and effectiveness date of the DO has expired, which also meets the language in Paragraph 3 regarding buildout being expired. Collier County can issue a minor amendment clarification to the Planned Unit Development for the DRI if necessary because there is no change in uses or to the total amount of ALF/SNF units presently allowed in the DRI/PUD (which is 270 total, 210 ALF and 60 SNF).

### Character, Magnitude, Location

No changes to character, magnitude or location.

### Impact on Regional Resources and Facilities

No additional regional impacts. DRI is essentially buildout under the provisions of Chapter 380.06(15)(g)3.



Multi-jurisdictional Issues

None.

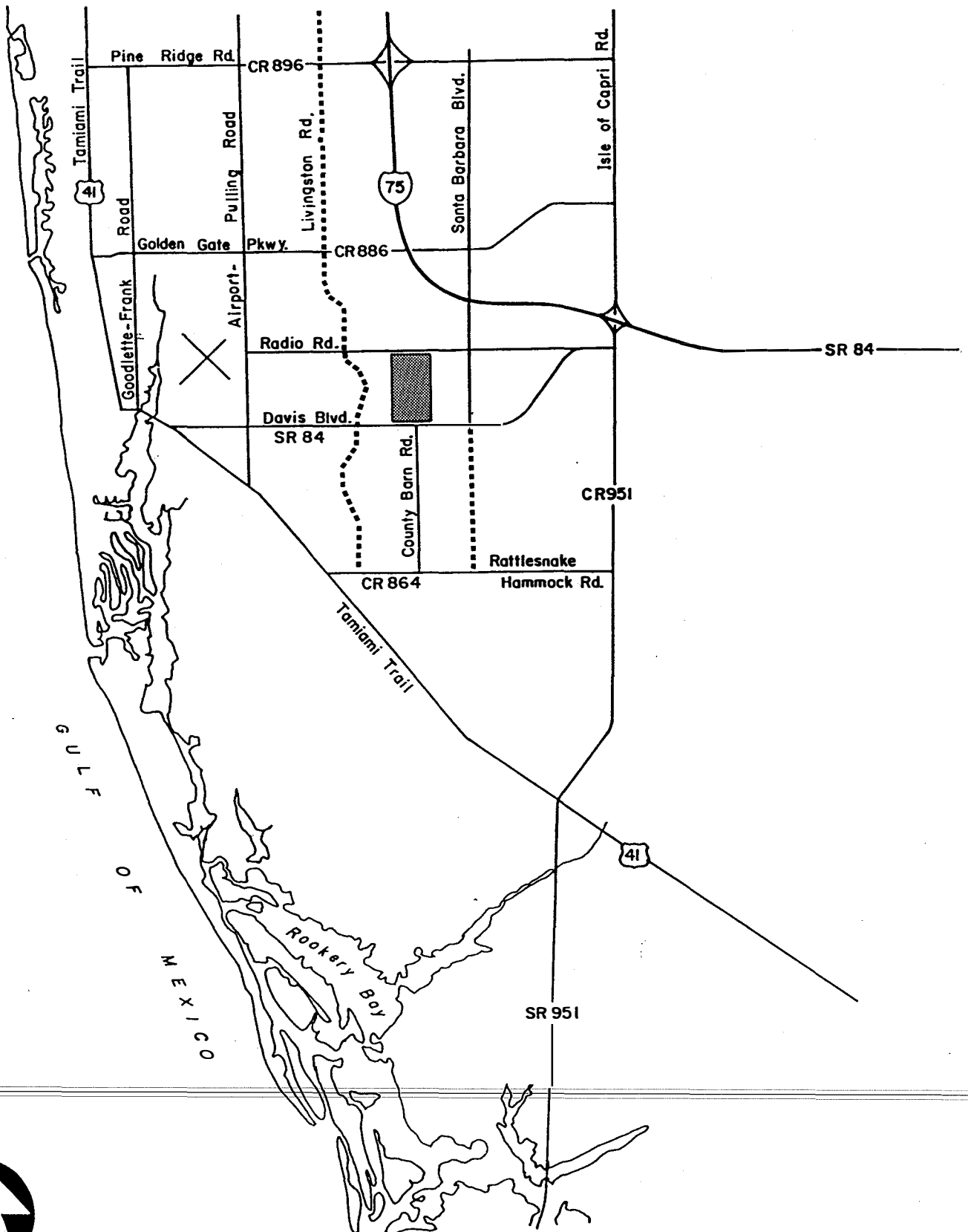
Need For Reassessment Of The DRI

No need for reassessment. DRI is essentially buildout under the provisions of Chapter 380.06(15)(g)3.

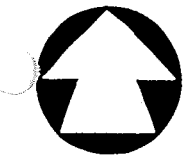
Acceptance Of Proposed D.O. Language

No amendment necessary. DRI is essentially buildout under the provisions of Chapter 380.06(15)(g)3.

- RECOMMENDED ACTIONS:**
1. Notify Collier County and the applicant that the proposed change will not create additional regional impacts or any regional impacts not previously reviewed by the regional planning council and that the minor clarification to the PUD can be made under the provisions of Florida Statutes Chapter 308.06(15)(g)3 as an essentially buildout DRI.
  2. No DRI DO amendment is necessary and Council participation at the local public hearing is not necessary, unless requested by the County for technical assistance purposes.

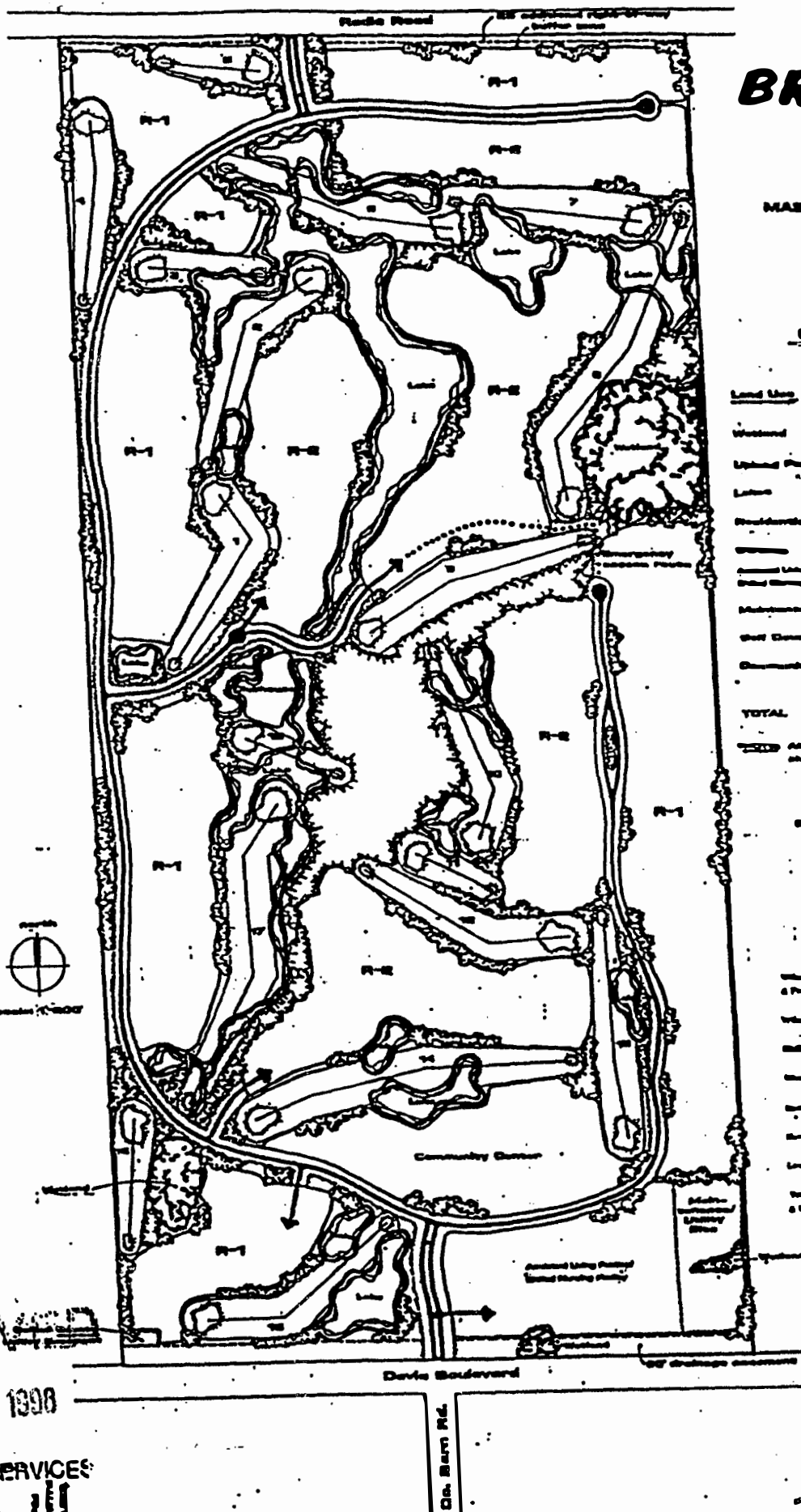


**BRETONNE PARK  
GENERAL LOCATION**



0 1 2 (MILES)  
SWFRPC,

ATTACHMENT 11



# BRETONN PARK

MASTER DEVELOPMENT PLAN  
ROBERT H. LEMMOND

## LAND USE SUMMARY

Land Use	Acres
Woodland	10.2
Upland Park/Recreation	14.2
Lake	24.0
Residential R-1	108.7
Office	0.1
General Living Parking	1.0
Special Living Parking	1.0
Maintenance/Utility Area	1.0
Soft Ground	17.0
Community Center	1.0
<b>TOTAL</b>	<b>178.2</b>

NOTE: All acreages are approximate and subject to change.

## Community Center

Community Center Building

## Other Summary

Water, Sewer, Gas, & Power, etc.	Water, Sewer, Gas, & Power, etc.
Water, Sewer, Gas, & Power, etc.	Water, Sewer, Gas, & Power, etc.
Water, Sewer, Gas, & Power, etc.	Water, Sewer, Gas, & Power, etc.
Water, Sewer, Gas, & Power, etc.	Water, Sewer, Gas, & Power, etc.
Water, Sewer, Gas, & Power, etc.	Water, Sewer, Gas, & Power, etc.
Water, Sewer, Gas, & Power, etc.	Water, Sewer, Gas, & Power, etc.
Water, Sewer, Gas, & Power, etc.	Water, Sewer, Gas, & Power, etc.
Water, Sewer, Gas, & Power, etc.	Water, Sewer, Gas, & Power, etc.
Water, Sewer, Gas, & Power, etc.	Water, Sewer, Gas, & Power, etc.
Water, Sewer, Gas, & Power, etc.	Water, Sewer, Gas, & Power, etc.

Total Area: 178.2 Acres  
Open Space: 4.14 Acres/Acre

## P.L.D. MASTER PLAN

Prepared by: Robert H. Lemmond, Robert H. Lemmond & Associates, Inc.  
City of Davis, California  
November 1988

ALL RIGHTS RESERVED AND NO PART OF THIS PUBLICATION MAY BE REPRODUCED OR TRANSMITTED IN ANY FORM OR BY ANY MEANS, ELECTRONIC OR MECHANICAL, WITHOUT PERMISSION IN WRITING FROM THE PUBLISHER.

RECEIVED

OCT 13 1988

PLANNING SERVICES

PUD 86-12(3)

DOA 98-3

# Agenda Item

11

11

## SWFRPC Committee Reports

11

11

# Agenda Item

11a

11a

Budget & Finance Committee

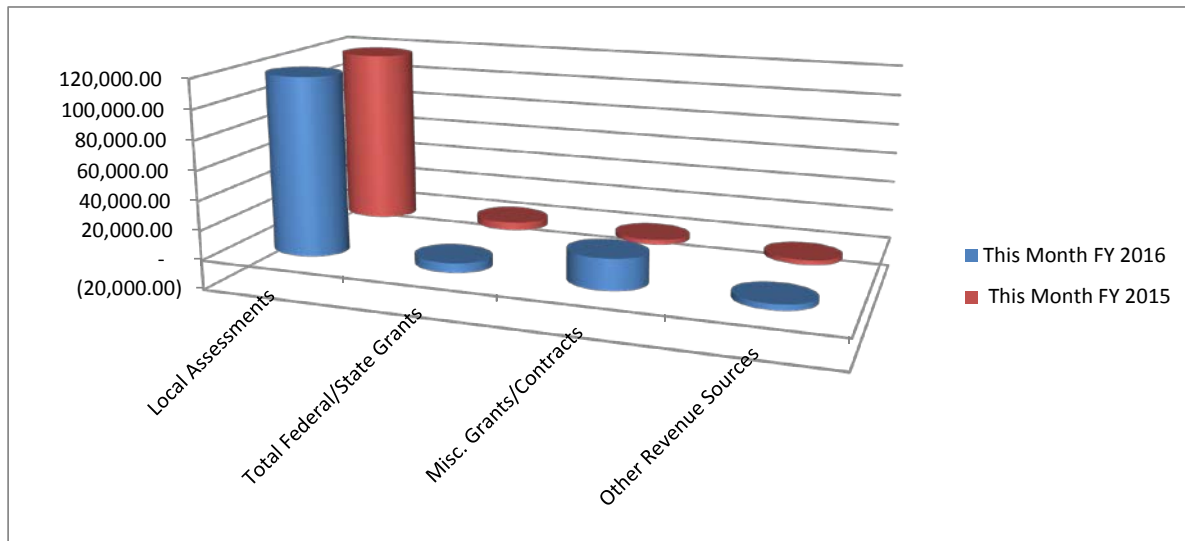
11a

## 2015 - 2016 Workplan & Budget Financial Snapshot Jan-16

### Revenues

Local Assessments  
Total Federal/State Grants  
Misc. Grants/Contracts  
Other Revenue Sources

Monthly Revenues



Notes: Local Assessments billed at the beginning of each quarter: October, January, April and July

Federal Grants (EPA) billed monthly: EPA: Ecosystems Services

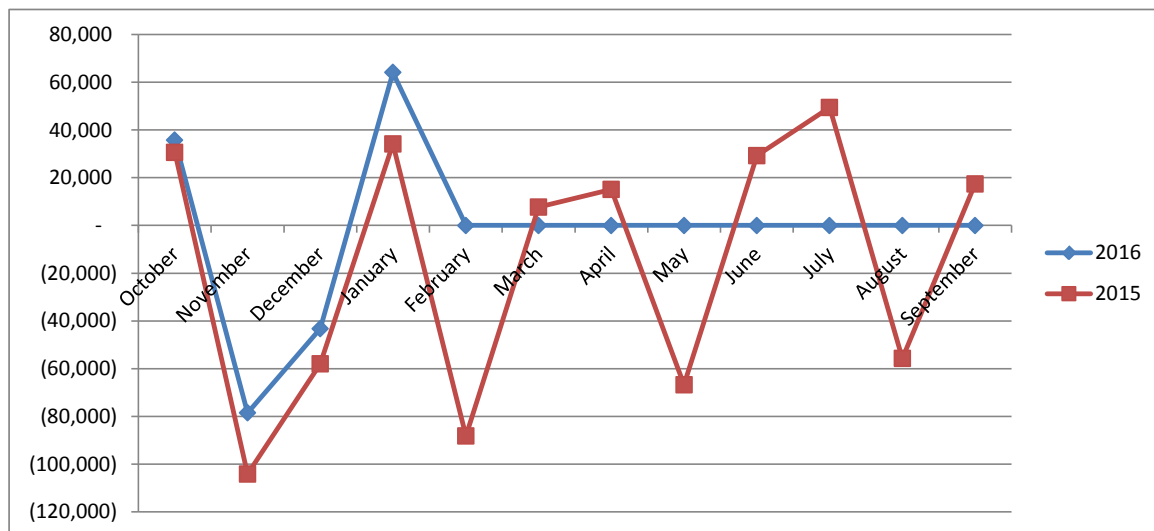
State/Federal Grants billed quarterly: LEPC, HMEP, TD, and ED

Misc. Grants/Contracts billed quarterly: MARC Solar Ready

Misc. Grants/Contracts billed by deliverable: SQG, Interagency PO'S

Other(DRI) billed /recorded monthly as cost reimbursement

Monthly Net Income (Loss)



**YTD: Net Income \$(21,962) Unaudited**

# SWFRPC

## Detail of Reserve

### As of January 31, 2016

***Cash and Cash Equivalents:***

Petty Cash	\$ 200
Bank of America Operating Funds	66,182
<b><i>Total Cash and Cash Equivalents</i></b>	<b>\$ 66,382</b>

***Investments:***

Iberia Bank MM	\$ 534,353
Local government Surplus Trust Fund Investment Pool (Fund A)	135,667
Local government Surplus Trust Fund (Fund B)	-
<b><i>Total Investments</i></b>	<b>\$ 670,020</b>
<b>Total Reserves</b>	<b>\$ 736,402</b>

**SWFRPC INCOME STATEMENT  
COMPARED WITH BUDGET  
FOR THE ONE MONTH ENDING JANUARY 31, 2016**

92 of 115

	Current Month	Year to Date A	FY 2015-2016 Approved Budget B	% Of Budget Year to Date	Budget Remaining
<b>REVENUES</b>					
<b>LOCAL ASSESSMENTS</b>					
CHARLOTTE COUNTY	\$ 12,335	\$ 24,670	\$ 49,340	50.00%	\$ 49,340
COLLIER COUNTY	25,259	50,518	101,035	50.00%	101,035
GLADES COUNTY	964	1,928	3,856	50.01%	3,856
HENDRY COUNTY	2,842	5,684	11,369	50.00%	11,369
LEE COUNTY	39,412	76,565	157,647	48.57%	157,647
CITY OF FORT MYERS	5,208	10,416	20,831	50.00%	20,831
TOWN OF FORT MYERS BEACH INC	469	938	1,875	50.03%	1,875
BONITA SPRINGS	3,436	6,872	13,746	49.99%	1,947
CITY OF SANIBEL	487	974	1,947	50.03%	116,142
SARASOTA COUNTY	29,036	58,072	116,142	50.00%	13,746
<b>TOTAL LOCAL ASSESSMENTS</b>	<b>\$ 119,448</b>	<b>\$ 236,637</b>	<b>\$ 477,787</b>	<b>49.53%</b>	<b>\$ 477,787</b>
<b>FEDERAL / STATE GRANTS</b>					
DEM -Title III - LEPC 15/16		\$ 10,873	\$ 48,000	22.65%	\$ 37,127
DEM-HMEP Planning & Training 15/16		\$ 2,916	\$ 22,000	13.25%	19,085
FL CTD - Glades/Hendry TD 15/16		8,554	38,573	22.18%	30,019
MARC - SOLAR READY		3,328	6,000	55.47%	2,672
DEM - Collier Hazards	4,362	4,362	9,693	45.00%	5,331
Economic Development Planning		15,750	63,000	25.00%	47,250
<b>TOTAL FEDERAL / STATE GRANTS</b>	<b>\$ 4,362</b>	<b>\$ 45,782</b>	<b>\$ 187,266</b>	<b>1.26%</b>	<b>\$ 141,484</b>
<b>MISC. GRANTS / CONTRACTS/CONTRACTUAL</b>					
City of Bonita Springs - Spring Creek		\$ -	\$ 30,000	0.00%	30,000
VISIT FLORIDA - MARKETING		-	4,000	0.00%	4,000
GLADES SQG		-	3,900	0.00%	\$ 3,900
City of Punta Gorda - Mangrove Loss		12,125	32,250	37.60%	20,125
<b>TOTAL MISC. GRANTS/CONTRACTS</b>	<b>\$ -</b>	<b>\$ 12,125</b>	<b>\$ 70,150</b>	<b>17.28%</b>	<b>\$ 34,650</b>
<b>DRIS/NOPCS/MONITORING</b>					
DRI MONITORING FEES	\$ 750	\$ 1,000	\$ -		\$ (1,000)
DRIS/NOPCS INCOME	1,921	14,421	35,000	41.20%	20,579
<b>TOTAL</b>	<b>\$ 2,671</b>	<b>\$ 15,421</b>	<b>\$ 35,000</b>	<b>44.06%</b>	<b>\$ 19,579</b>



	Current Month	Year to Date A	FY 2015-2016 Approved Budget B	% Of Budget Year to Date	Budget Remaining
<b>Program Development (Unsecured Grants/Contract)</b>					
*Program Development (Unsecured Grants/Contract)			100,000		
Goodwheels Tech Assistance		2,250	-	N/A	(2,250)
FED - MARC - Travel SRII	278	311	-	N/A	(311)
FED - EPA - Ecosystem Services	1,695	7,912	-	N/A	(7,912)
STATE- DEM HMEP TRAINING MOD 14/15		48,266	-	N/A	(48,266)
STATE -DEO Transportation MPO Rail	15,500	15,500			
Collier County EDC - Data Research	1,200	1,200			
STATE-DEO MLK Revitalization	5,000	5,000			
<b>TOTAL PROGRAM DEVELOPMENT</b>	<b>\$ 23,673</b>	<b>\$ 80,439</b>	<b>\$ 100,000</b>	<b>80.44%</b>	<b>\$ (58,739)</b>
<b>OTHER REVENUE SOURCES</b>					
ABM SPONSORSHIPS			-	N/A	-
INTEREST INCOME		53	1,500	3.51%	1,447
Fund A Investment Income		101		N/A	(101)
<b>TOTAL OTHER REVENUE SOURCES</b>	<b>\$ -</b>	<b>\$ 154</b>	<b>\$ 1,500</b>	<b>10.26%</b>	<b>\$ 1,346</b>
<i>Fund Balance</i>	<i>\$ -</i>	<i>\$ -</i>	<i>\$ 640,816</i>		
<b>TOTAL REVENUES</b>	<b>\$ 150,154</b>	<b>\$ 390,558</b>	<b>\$ 1,512,519</b>		<b>\$ 736,203</b>
<b>EXPENSES</b>					
<b>PERSONNEL EXPENSES</b>					
SALARIES EXPENSE	\$ 36,315	\$ 155,295	\$ 487,098	32%	331,803
FICA EXPENSE	2,725	11,642	37,263	31%	25,621
RETIREMENT EXPENSE	6,045	21,456	35,084	61%	13,628
HEALTH INSURANCE EXPENSE	7,427	22,228	79,799	28%	57,571
WORKERS COMP. EXPENSE	111	575	3,687	16%	3,112
UNEMPLOYMENT COMP. EXPENSE	-	-	-	N/A	0
<b>TOTAL PERSONNEL EXPENSES</b>	<b>\$ 52,623</b>	<b>\$ 211,196</b>	<b>\$ 642,931</b>	<b>33%</b>	<b>431,735</b>
<b>OPERATIONAL EXPENSES</b>					
CONSULTANTS	\$ 2,510	\$ 20,800	\$ 33,100	63%	12,300
GRANT/CONSULTING EXPENSE	385	47,155	18,100	261%	(29,055)
AUDIT SERVICES EXPENSE	-	-	32,000	0%	32,000
TRAVEL EXPENSE	2,169	9,224	12,960	71%	3,736
TELEPHONE EXPENSE	346	1,511	5,100	30%	3,589
POSTAGE / SHIPPING EXPENSE	150	295	2,075	14%	1,780
EQUIPMENT RENTAL EXPENSE	815	2,149	7,335	29%	5,186
INSURANCE EXPENSE	1,478	11,342	23,207	49%	11,865
REPAIR/MAINT. EXPENSE	26	2,838	5,000	57%	2,162

	Current Month	Year to Date A	FY 2015-2016 Approved Budget B	% Of Budget Year to Date	Budget Remaining
PRINTING/REPRODUCTION EXPENSE	967	1,240	2,580	48%	1,340
UTILITIES (ELEC, WATER, GAR)	487	6,517	21,500	30%	14,983
ADVERTISING/LEGAL NOTICES EXP	29	187	2,750	7%	2,563
OTHER MISC. EXPENSE	-	-	2,150	0%	2,150
BANK SERVICE CHARGES	400	1,404	2,700	52%	1,296
OFFICE SUPPLIES EXPENSE	156	541	4,000	14%	3,459
COMPUTER RELATED EXPENSE	302	11,270	22,969	49%	11,699
DUES AND MEMBERSHIP	-	6,385	25,510	25%	19,125
PUBLICATION EXPENSE	-	-	200	0%	200
PROF. DEVELOP.	-	175	3,000	6%	2,825
MEETINGS/EVENTS EXPENSE	513	655	1,250	52%	595
MOVING EXPENSE	19,189	39,260	-	N/A	(39,260)
CAPITAL OUTLAY EXPENSE	-	-	5,000	0%	5,000
CAPITAL OUTLAY - BUILDING	-	-	4,000	0%	4,000
LONG TERM DEBT	-	21,292	128,000	17%	106,708
LEASE LONG TERM	3,500	10,500	-	N/A	(10,500)
UNCOLLECTABLE RECEIVABLES	-	-	-	N/A	
FUND BALANCE			\$ 640,816	0%	
<b>OPERATIONAL EXP.</b>	<b>\$ 33,421</b>	<b>\$ 194,740</b>	<b>\$ 1,005,302</b>	<b>19%</b>	<b>169,746</b>
ALLOCATION FOR FRINGE/INDIRECT (CAPTURED BY GRANTS)			\$ -		
UTILIZED RESERVE			\$ (135,714)		
<b>TOTAL OPERATIONAL EXP.</b>			\$ 869,588		
<b>TOTAL CASH OUTLAY</b>	<b>\$ 86,044</b>	<b>\$ 405,936</b>	<b>\$ 1,512,519</b>		
<b>NET INCOME (LOSS) BEFORE OTHER INCOME/(EXPENSE)</b>	<b>\$ 64,110</b>	<b>\$ (15,378)</b>			
<b>OTHER INCOME/(EXPENSE)</b>					
Depreciation Expense	\$ -	\$ (4,099)			
Gain/Loss on Disposition	\$ -	\$ (287,272)			
<b>NET INCOME (LOSS) AFTER OTHER INCOME/(EXPENSE)</b>	<b>\$ 64,110</b>	<b>\$ (306,749)</b>			

SWFRPC  
Balance Sheet  
January 31, 2016

95 of 115

ASSETS

Current Assets		
Cash - Bank of America Oper.	\$	66,181.53
Cash - Iberia MM		534,353.45
Cash - FL Local Gov't Pool		135,666.78
Petty Cash		200.00
Accounts Receivable		232,317.59
		<hr/>
Total Current Assets		968,719.35
Property and Equipment		
Property, Furniture & Equip		207,603.57
Accumulated Depreciation		(190,530.93)
		<hr/>
Total Property and Equipment		17,072.64
Other Assets		
Amount t.b.p. for L.T.L.-Leave		45,923.44
FSA Deposit		405.60
Amt t.b.p. for L.T.Debt-OPEP		61,797.00
Amount t.b.p. for L.T.Debt		(410.03)
		<hr/>
Total Other Assets		107,716.01
		<hr/>
Total Assets	\$	1,093,508.00
		<hr/> <hr/>

LIABILITIES AND CAPITAL

Current Liabilities		
Accounts Payable	\$	2,131.76
Deferred Income - EPA_3675		79,123.15
Deferred Palmer XXIV_4097		26,578.98
Deferred Palmer Ranch XXV_4098		29,078.98
Deferred NorthPoint NOPC_5328		662.23
Deferred Pelican Marsh_5329		463.85
Deferred Palmer Ranch MDO_NOPC		1,500.00
Deferred Palmer Ranch IV 8-9		2,500.00
Deferred Palmer Ranch IV - 12		1,500.00
Deferred Alico-3 Oaks_5334		2,000.00
Deferred Venice NOPC_5335		2,000.00
Deferred Bretonne NOPC_5336		2,000.00
Deferred Commons NOPC_5337		2,000.00
FICA Taxes Payable		1,535.50
Federal W/H Tax Payable		1,286.08
United way Payable		843.00
Deferred Compensation Payable		(375.00)
FSA Payable		(308.48)
LEPC Contingency Fund		305.25
		<hr/>
Total Current Liabilities		154,825.30
Long-Term Liabilities		
Accrued Annual Leave		45,923.44
Long Term Debt - OPEB		61,797.00
		<hr/>
Total Long-Term Liabilities		107,720.44
		<hr/>
Total Liabilities		262,545.74
Capital		

Unaudited - For Management Purposes Only

SWFRPC  
Balance Sheet  
January 31, 2016

96 of 115

Fund Balance-Unassigned	315,267.95	
Fund Balance-Assigned	514,000.00	
FB-Non-Spendable/Fixed Assets	308,443.50	
Net Income	<u>(306,749.19)</u>	
Total Capital		<u>830,962.26</u>
Total Liabilities & Capital	\$	<u><u>1,093,508.00</u></u>

# Agenda Item

11b

11b

Economic Development  
Committee

11b

# Agenda Item

11c

11c

Energy & Climate Committee

11c

# Agenda Item

11d

11d

Estero Bay Agency on Bay  
Management Committee

11d

## **Estero Bay Agency on Bay Management**

The regular meeting of the Estero Bay Agency on Bay Management was held on February 8, 2016.

Minutes of the November 9, 2015 and December 14, 2015 meetings were edited and then approved as edited.

An election of officers was held with the current officers nominated for Chair: Wayne Daltry, Vice Chair: Patty Whitehead, and Secretary: Nora Demers. The slate of officers was approved with abstentions from FDOT and EBAP.

Membership in the EBABM for the Beach Area Civic Association was discussed and approved with abstentions from FDOT and EBAP.

The proposed EBABM Workplan for 2016 was discussed and modified to a format that was approved with abstentions from FDOT and EBAP. A copy is attached.

Cela Tega Planning was discussed and a planning team composed of Dr. Demers, Ms. Miller, and Mr. Beever was formed. Other EBABM members will be seeking funding for the conference on **"Sea Level Rise Adaptation and Resiliency Planning in the Estero Bay Region."**

In Old Business the letters on inactive EBABM members was discussed. So far there has been no response to the EBABM form the notified organizations indicating that they want to continue to be members.

Emerging Issues included the Caloosahatchee Watershed Assessment and TMDL planning, the setting of CHNEP Restoration Targets for Estero Bay, the proposed Clean & Snag project for the Estero River, and the Caloosahatchee River water releases from Lake Okeechobee,

Announcements include:

A proposal for a referendum on C2020 in the Fall election vote is likely to be considered at the February 16th Lee BOCC meeting.

Dr. Everham announced four presentations associated with FGCU: Artist in Residence Michael Massaro: The Vanishing— Seagrass Ecology February 11 • Artist Talk at 5:00 pm , ArtLab Gallery reception follows, until 7:00 pm,  
[http://artgallery.fgcu.edu/Michael\\_Massaro\\_The\\_Vanishing.html](http://artgallery.fgcu.edu/Michael_Massaro_The_Vanishing.html)

Moonlight on the Marsh; Dr. Evelyn E. Gaiser on EXPECTING THE UNEXPECTED: PANDORA'S BOX OF PARADOX IN AN UPSIDE-DOWN ESTUARY THURSDAY, February 11, 2016, 7 PM, <http://www.fgcu.edu/swamp/moonlight.html>

**20<sup>th</sup> Annual Southwest Florida Invasive Species Workshop**, Wednesday, February 24, 2016, <http://www.floridainvasives.org/southwest/>



and the 2016 Rachel Carson Distinguished Lecture, Featuring, Alison Hawthorne Deming, Creating the Future: New Relationships between Art and Science in the Era of Climate Change, Thursday, February 25, 2016 at FGCU., <http://www.fgcu.edu/cese/>

The Charlotte Harbor National Estuary Program (CHNEP) invites you to the **Climate Adaptation for Coastal Communities Workshop on Feb. 23-25, 2016**, at Lemon Bay Park (570 Bay Park Blvd, Englewood, 941/861-5000).

The Cypress Cove Conservancy's Planet Earth Art and Music Festival Co-hosted by the Responsible Growth Management Coalition, 15 th Annual Festival, Saturday April 2nd, Koreshan State Park, Free festival to the general public (5.00 Koreshan parking fee applies ) Opening ceremony 1:00 pm.

There were no public comments on items not on the agenda

Next Meeting Time and Place, for EBABM is Monday, March 14, 2015 – 9:30 a. m.

Next IAS Subcommittee Meeting: in Monday, February 29, 2015

**Recommended Action: Approval of elected officers for 2016 (Chair: Mr. Wayne Daltry, Vice Chair: Ms. Patty Whitehead, and Secretary: Dr. Nora Demers) and the 2016 Workplan for the EBABM.**

**Proposed ESTERO BAY AGENCY ON BAY MANAGEMENT (EBABM)  
PROJECTS AND ACTIVITIES 2016**

- 1. Provide Comments and Report to the Southwest Florida Regional Planning Council (SWFRPC) and others on relevant Items of Review such as: Comprehensive Plan Amendments, Developments of Regional Impact, update of the Strategic Regional Policy Plan, Intergovernmental Coordination and Review projects, etc.**
- 2. Develop strategies and recommend actions to reduce impairment to Estero Bay waters. This will include comment on important initiatives including Surface Water Improvement Management (SWIM), development of TMDLs, establishment of Minimum Flows and Levels, Pollution Load Reduction Goals (PRGs), Basin Management Action Plans (BMAPs), Numeric Nutrient Criteria (NNC), and refinement of the Southwest Florida Special Basin Rule.**
- 3. Seek continuing funding support from EBABM partners and external grant sources for special projects, event, and staff support of the EBABM.**
- 4. Coordinate activities with the Charlotte Harbor National Estuary Program (CHNEP) and the Southwest Florida Watershed Council.**
- 5. Collect and maintain a data library for Estero Bay at the offices of the SWFRPC and contribute to the CHNEP water atlas.**
- 6. Explore the addition of these Estero Bay materials to Digital FGCU.**
- 7. Review and comment to regulatory and infrastructure agencies on issues affecting Estero Bay and its watershed.**
- 8. Review and participate as appropriate on other current issues affecting Estero Bay, such as the Caloosahatchee watershed and its tributaries.**
- 9. Complete the 2016 Cela Tega entitled "Sea Level Rise Adaptation and Resiliency Planning in the Estero Bay Region."**
- 10. Assure effective dissemination recommendations and findings to decision makers and the public.**
- 11. Support land acquisitions and protections in the Estero Bay Watershed including participation in the implementation of the Florida Water and Land Conservation Initiative, (Amendment 1)**
- 12. Initiate mapping project that shows relationship of projects that impact conservation lands, critical habitats, watersheds and flow-way areas.**

## ESTERO BAY AGENCY ON BAY MANAGEMENT

Monday, November 9, 2015 – 9:30 AM.

SWFRPC Offices  
1926 Victoria Avenue  
Fort Myers, Florida

1. Call to Order – Mr. Daltry called the meeting to order at 9:37AM.
2. Attendance- As usual attendance was taken from the sign in sheet:

NAME	ORGANIZATION
Lisa Beever	CHNEP
Rae Blake	Town of Fort Myers Beach
Peter Cangialosi	ECCL
Cheryl Clarke	EBAP
Brad Cornell	Audubon Florida
Wayne Daltry	RGMC
Nora Demers	Happehatchee Center
Win Everham	FGCU
Marissa Carrosso	Conservancy of Southwest Florida
Jaqueline Langston	FDER/ EBAP
Laura Miller	LWV
Pete Quasius	Snook Foundation
Darren Rumbold	FGCU, Vestor Marine Lab
Martha Simons	SWFRPC
Roger Strelow	Estero Community Associations
Patty Whitehead	Bonita Lion's Club Green Team

Guest: Rebecca Flynn, EBAP  
Staff in Attendance: Jim Beever

- 1) The minutes of the October 26, 2015 was approved with amendments for typos. Motion by Dr. Beever, Second by Dr. Demers. Approved unanimously.
- 2) Corkscrew Crossing Presentation - A Team for the Project presented on the Corkscrew Crossing development proposal. A copy of the presentation can be found at the SEFRPC EBEBAM site at [http://www.swfrpc.org/content/Natural\\_Resources/ABM/20150702-SAJ-2006-06379-LEE-0723-EWG.pdf](http://www.swfrpc.org/content/Natural_Resources/ABM/20150702-SAJ-2006-06379-LEE-0723-EWG.pdf)

- 3) Old Business- Approval of letters FGCU and Corkscrew Farms
  
- 4) Emerging Issues – Lee County may not be in compliance with the EAR and litigation may be upcoming by third party NGO. There is a Notice of General Permit for Lee County this will likely not apply to New pass dredging and Big Carlos pass dredging. There is a Lee County Neighborhood Improvement Plan with a NEP grant Packages for native plant and reduction of septic system and fertilizer pollution. The Cela Tega will likely be set for December 2016 A request to continue mining past the year 202 was not approved in the Bonita Springs DRGR. There was a discussion on limiting the amount of time for the presenters of the item on Corkscrew Crossing at the December meeting.
  
- 5) Announcements: Included the new book on the Koreshans. And concerning the Florida Humanities Council.
  
- 6) Public Comments on Items Not on the Agenda -None
  
- 7) Next Meeting Time and Place, for EBABM is Monday, December 14, 2015 – 9:30 a. m.  
 – 9:30 A. M. at FGCU Room 108 Sugden Center and for the IAS is November 23, 2015 – 1:30 P.M at FGC and by teleconference.
  
- 8) Adjournment: Mr. Daltry called the meeting to adjournment at 11:50 A.M.

## ESTERO BAY AGENCY ON BAY MANAGEMENT

Monday, December 14, 2015 – 9:37 a.m.

SWFRPC Offices  
1926 Victoria Avenue  
Fort Myers, Florida

1. Call to Order – Mr. Daltry called the meeting to order at 9:42 AM.
2. Attendance- As usual attendance was taken from the sign in sheet:

NAME	ORGANIZATION
Lisa Beever	CHNEP
Rae Blake	Town of Fort Myers Beach
Tom Babcock	FMPP
Brenda Brooks	CREW
Cheryl Clark	EBAP
Brad Cornell	Audubon Florida
Wayne Daltry	RGMC
Nora Demers	Happehatchee Center
Win Everham	FGCU
Marissa Carrosso	Conservancy of Southwest Florida
Jaqueline Langston	FDER/ EBAP
Laura Miller	LWV
Pete Quasius	Snook Foundation
Patty Whitehead	Bonita Lion's Club Green Team

Guest: Rebecca Flynn, EBAP  
Staff in Attendance: Jim Beever

3. Minute were not available for approval due to move
4. Nomination of Officers : No nominating committee was formed. Discussion occurred of retaining the existing officers.
5. Bonita East 278 was discussed from materials provided from the Interagency Project Review Committee. The location was discussed.
6. Old Business- Approval of letter on Corkscrew Crossing. Letter was discussed. Motion for approval by Mr. Cornell. Second by Ms. Whitehead. A separate letter on extending denser development into the DRGR was discussed and tabled to the IAS . Motion passed. Abstention by Cheryl Clarke.
7. Current EBABM Membership: Issue on vacant Lee County seats on the EBABM. Letters were proposed for non-attending EBABM entities. There was discussion on new groups joining the EBABM . There is a need for nomination letters and the period for new member consideration

would be February. Discussion on filling empty seats for Lee County, City of Fort Myers, federal agencies Discussion on involving more business people.

8. Emerging Issues – BOCC ended work on updating Comprehensive Plan. EBABM should ask Lee County what is their system for the next 6 years. Request Lee County what they plan to do for the update. Best contact would be the County Administrator. Copying Commission members of EBABM.

Workshop on the next day with Lee County Commission. Workshop is in the tower building 1:30 PM. There is an agenda for the meeting.

Proposal for high school on C2020 lands was discussed and a letter of objection proposed. Discussion that it is good for high schools to be located in a community not at the periphery. A letter was planned regarding this. Ms. Carrozzo volunteered to prepare letter.

LPA reviewing Bay Harbor Marina on San Carlos Island. New Grand Resorts proposal walk-on item for the Lee BOCC. Proposed new half-mile sea wall for the development. also being reviewed by Fort Myers Beach Town Council (potentially a co-applicant). This conflicts with Comp Plan and would need an exception. So far nothing has been filed. No agreement on this at this time. Town has concerns with the proposal. Four chain hotels, eliminating one public park for one of the hotels, wall is proposed in front of the CCSL. Hotels are proposed to be much taller than current Comp Plan.

The Estero River Clean and Snag proposal in the area near the proposed town center was discussed.

Dr. Bradshaw is retiring in 2017. There was a discussion of obtaining EBABM representation on the search committee for the replacement.

Gopher tortoise relocation sites available for FGCU gopher tortoises were discussed with perhaps using the Buckingham FGCU site as an option.

The Weeks Fish Camp project changes including ne high rises was discussed as well as the question of and how much of the marina will remain public.

Potential new Estero Island bridge from San Carlos Island discussed in coordination with the new hotel proposal.

Currently no active state legislation to eliminate the RPC or review of DRIs. No current proposals to eliminate local government fertilizer ordinances.

9. Announcements: Christmas Bird Count particularly shorebirds and a meeting on shorebird protection. CREW Trust fund raiser on Feb 13, 2016 concert. EBAP plan was approved by the State trustees. The 50th anniversary of the EBAP, the first Aquatic Preserve, will be celebrated Friday, December 2, 2016 at the Hyatt. AWRA January 15, 2016 conference at FGCU. Focus is on the new wave of urban sprawl. New office location for the SWFRPC. Form NOAA data the measured rate of sea level rise since 2007 has increased 16%. Harry Gottlieb passed away. Mr. Babcock will provide information to be shared with EBABM members.

10. Public Comments on Items Not on the Agenda -None

11. Next Meeting Time and Place, for EBABM is Monday, January 11, 2016 – 9:30 A. M. at the SWFRPC and for the IAS is January 25, 2015 – 1:30 P.M at SWFRPC and by teleconference.

12. Adjournment: Mr. Daltry called the meeting to adjournment at 11:35 A.M.



January 11, 2016

Lee County Board of County Commissioners  
2120 Main St.  
Fort Myers, FL 33901

RE: Conservation 20/20 Pine Lake Preserve

Dear Lee County Board of County Commissioners,

The Estero Bay Agency on Bay Management (ABM) is a non-regulatory advisory body whose directive is to make recommendations for the management of Estero Bay and its watershed. Conservation 20/20's Pine Lake Preserve is located within the Estero Bay watershed near one of the Bay's tributaries, the Imperial River. Thus, the ABM had recently discussed many significant concerns at the ABM's December 14, 2015 meeting regarding the proposal to consider a portion of Pine Lake Preserve as a potential location for the future Bonita Springs High School. Those concerns included the site's status as preserved land, impacts to water quality and restoration and the negative precedent of considering incompatible land uses on Conservation 20/20 preserves.

Therefore, the ABM would like to take this opportunity to thank the Board for directing county staff at the December 15, 2015 Board meeting to inform the City of Bonita Springs and the School Board that Pine Lake Preserve, and other Conservation 20/20 property, are not available or suitable for a potential high school site.

The Board's action demonstrates a commitment to the integrity of the Conservation 20/20 program and that 20/20 preserves should not be considered as sites for non-conservation land uses or development. The ABM applauds the Board's leadership on this issue.

Sincerely,

Wayne Daltry, Chairperson  
Estero Bay Agency on Bay Management  
cc. SWFRPC



# Agenda Item

11e

11e

Executive Committee

11e

# Agenda Item

11f

11f

Legislative Affairs Committee

11f

# Agenda Item

11g

11g

Quality of Life & Safety  
Committee

11g

# Agenda Item

1 1h

1 1h

Regional Transportation  
Committee

1 1h

# Agenda Item

11i

11i

Interlocal Agreement/Future  
of the SWFRPC Committee

11i

# Agenda Item

12

12

New Business

12

12

# --- Agenda --- Item

12a

12a

SanCap Solar Presentation

12a